



**HOLMES  
COMMUNITY  
COLLEGE**

*Factbook*

**20  
19**



# Preface

---

The **Holmes Community College 2019 Factbook** contains information relevant to planning, evaluation, and assessment. In addition, this publication provides current descriptive information about Holmes Community College for administrators, faculty, staff, and students. Enrollment data for the **2019 Factbook** is obtained from the six-week Mississippi State Board for Community Colleges' Audit.

The Office of Institutional Research and Effectiveness prepares the annual document with input from various divisions and departments of the college. Data is derived from administrative reports completed at specific times throughout the academic year and relies on the data reported as well as data source.

The Office of Institutional Research and Effectiveness welcomes comments and suggestions regarding this publication to enhance future editions as presented on the last page of the **Holmes Community College 2019 Factbook**.

Holmes Community College provides services at the following campuses and center locations:

**Goodman Campus**

1 Hill Street  
P.O. Box 369  
Goodman, MS 39079  
(662) 472-2312

**Grenada Campus**

1060 J K Avert Drive  
Grenada, MS 38901  
(662) 226-0830

**Ridgeland Campus**

412 West Ridgeland Avenue  
Ridgeland, MS 39157  
(601) 856-5400

**Attala Center**

620 West Jefferson Street  
Kosciusko, MS 39090  
(662) 290-0808

**Yazoo County Economic  
Development and Education Center**

637 East 15th Street  
Yazoo City, MS 39194



# Table of Contents

---

Institutional Profile.....	4
Vision, Mission, and Strategic Initiatives.....	4
College Information.....	5
Campus Locations.....	5
Accreditation .....	7
Program Pathways.....	8
Academic Pathways.....	8
Career Technical Pathways.....	9
Institutional Characteristics.....	10
Awarded Degrees and Certificates .....	10
Top Pathways of AA Degrees Awarded .....	10
Top Pathways of AAS Degrees Awarded .....	10
Enrollment .....	11
Student Enrollment .....	11
Credit Hours Enrollment.....	11
Top Pathways Enrollment.....	11
Student Characteristics .....	12
Classification Level.....	12
Residency Status.....	12
Enrollment Status .....	12
Gender Comparison.....	12
Ethnicity.....	12
Fall Enrollment by Residence .....	13
Fall 2018 Enrollment by MS Counties.....	13
Additional Fall 2018 Enrollment Data.....	13
Five-Year Fall Enrollment Trend of Holmes CC.....	14
Five-Year Fall Enrollment Trend of MS Two-Year Public Institutions.....	14
Full-Time Faculty Characteristics 2018.....	14
Development Foundation.....	14

Mississippi Demographic Data Comparison 2019 .....	15
Library Resources and Expenditures .....	16
Library Collections .....	16
Library Circulations.....	16
Library Expenditures.....	16
Library Database Usage .....	16
Workforce Development Training Activity Report .....	17
Classes .....	17
Trainees .....	17
Revenue by Source (FY 2018-19).....	18
Five-Year Trend of Revenue by Source.....	18
Expenditures.....	19
Five-Year Trend of Expenditures by Function .....	19
Organizational Charts .....	20
Holmes Community College District .....	20
Goodman Campus .....	21
Grenada Campus .....	22
Ridgeland Campus .....	23
Attala Center.....	24
Academic Programs .....	25
Career-Technical Programs.....	26
eLearning.....	27
Financial Services .....	28
Institutional Research and Student Affairs.....	29
Workforce Development .....	30
Campus Maps .....	31
Evaluation and Contact Information .....	34



# Institutional Profile

**H**olmes Community College, from its humble beginnings as Holmes County Agricultural High School, has grown into one of the largest and best community colleges in the state of Mississippi serving thousands of students.

In 1922, after Holmes County Agricultural High School had been in operation for 11 years, the legislature made it legal for agricultural high schools to add two years of college work, and Holmes Junior College opened its doors in 1925 offering the first year of college to students in Holmes and the surrounding counties. During the 1928-29 school year, the second year of college work was added making Holmes Junior College eligible to award the Associate of Arts degree.

Financial support for Holmes Junior College has grown from the original county of Holmes to include eight other counties - Attala, Carroll, Choctaw, Grenada, Madison, Montgomery, Webster and Yazoo. The state of Mississippi also serves as a major funding source for the College.

As the main campus grew and added needed programs, Holmes underwent an extensive study, which showed the need to address the educational needs in the other counties in the Holmes district, especially the northern and southern ends. In 1985, Holmes began building facilities and offering classes at both Grenada and Ridgeland.

Holmes Junior College became Holmes Community College beginning with the 1989 school year after the Board of Trustees decided that having “community” in the name would more accurately reflect the comprehensive and multi-faceted mission of the modern two-year college. The State Board for Community and Junior Colleges (now the Mississippi Community College Board) approved the name change in December 1988.

The Attala Center in Kosciusko opened its doors in 1997 to meet the needs of the residents in Attala and surrounding counties, and the Yazoo Center, located in the Yazoo Economic Development and Education

Center, opened its facilities in 2016 to provide extended services for residents of Yazoo City.

Holmes Community College recognizes that emerging technologies are changing the methods of instructional delivery to include eLearning programs, such as interactive classrooms, remote instruction, internet courses and other electronic-based teaching/learning activities. Holmes’ primary means of delivering eLearning classes are by the Mississippi Virtual Community College in both provided and hosted courses as well as through video conferencing via the Community College Network.

The college offers programs district-wide that allow students to earn associate degrees, certificates, and/or transferability to four-year institutions. At the same time, Holmes provides adult basic education, workforce training, and high school equivalency preparation and assessment.

## Vision, Mission, and Strategic Initiatives

### Vision

Holmes Community College will be a leader in education by serving as a comprehensive, community-oriented institution delivering flexible, responsive programs of the highest quality.

### Mission

Holmes Community College, a comprehensive public institution located in Central Mississippi, provides innovative educational and cultural opportunities to its constituents through campus-based and distance education programs. The college seeks to prepare its students for university transfer, productive employment, and lifelong learning by offering an Associate of Arts degree, Associate of Applied Science degree, technical certificates, and career certificates as well as workforce training. Holmes, whose primary commitment is to excellence in all areas, offers affordable, equal access to higher education in an attractive, secure, multi-campus environment.

- Revised by the Board of Trustees February 2017

## Strategic Initiatives

- I. Maintain an environment for continuous accessibility and improvement of the quality of education.
- II. Continue to acquire and support appropriate emerging technologies for curricular, instructional and administrative processes.
- III. Improve college personnel/student interactions to achieve a higher rate of student success.
- IV. Expand and improve the college's infrastructure in support of student services, instructional programs, administrative processes and community services.
- V. Improve the college's image by enhancing public relations through communication.
- VI. Expand and improve educational partnerships with business/industry and appropriate agencies.



*McDaniel Hall, Goodman Campus*

## College Information

### Location

Holmes Community College operates three campuses and two centers, each found in a nine-county district in Central Mississippi. The main campus is located in Goodman (Holmes County), three miles from I-55, in a rural farming area. The Ridgeland Campus is 45 miles south on I-55 in Ridgeland (Madison County) and is adjacent to Jackson, the state capital, and the state's largest metropolitan area. The Grenada Campus (Grenada County) is approximately 60 miles north of

Goodman on I-55 in an area noted for its industrial growth and recreational areas. The Attala Center in Kosciusko (Attala County), 30 miles east from Goodman, is located at the center of the state, and the Yazoo Center, 35 miles southwest from Goodman, is located in Yazoo City (Yazoo County) which is known as the gateway to the Mississippi Delta.

### Degrees and Certificates

Holmes Community College awards the following degrees and certificates: Associate of Arts (AA), Associate of Applied Science (AAS), Advanced Technical Certificate, Technical Certificate, and Career Certificate.

### Faculty

The college numbers 158 full-time faculty members, including 18 who hold a Doctorate degree, four who hold a Specialist degree, 109 who hold a Master's degree, 12 who hold a Bachelor's degree, 12 who hold an Associate degree, and three who hold a Certificate. The 264 part-time faculty members possess all the qualifications expected in a full-time faculty member.

## Campus Locations

The main emphasis in the organization and administration of Holmes Community College is that it is a single, institutional entity with three campus locations and additional outreach facilities. The same general policies, philosophies of operation, purposes and objectives, as well as the same procedural methods, apply to all locations equally, and exceptions can be made only when based on purely local factors. The standards for the instructional program are the same at all locations. Close departmental coordination among campuses is an essential goal of the college that ensures uniform quality of instruction. The estimated replacement value of the college's physical assets is at least \$47,845,700.

### Goodman Campus

The original campus of Holmes Community College, established in 1925, is located in the center of the state at Goodman, Mississippi, in the eastern part of Holmes County. The campus is composed of almost

200 acres with 33 principal buildings. The district administrative offices for the college are located at the Goodman Campus.

This campus offers academic courses for university transfer, technical programs, career programs, and workforce programs and training. Goodman also serves as the college's residential campus and has physical facilities for student activities including varsity sports and performing arts. The president's home is located on this campus. In addition to academic and career-technical curricula, the Goodman Campus offers opportunities for student participation in athletics, band, choral music, art, theatre, publications, and a broad selection of clubs and organizations.

---

### **Grenada Campus**

The Grenada Campus is located on approximately 14 acres near scenic Grenada Lake and is positioned on I-55 between Memphis, Tennessee, and Jackson, Mississippi. The campus has been fully operational since 1985 and provides opportunities for academic and cultural enrichment along with vocational expansion to meet the demands of the surrounding area.

This campus offers technical programs, academic courses, and workforce training. The campus further serves as a meeting place for a variety of educational workshops, seminars, and conferences. The Corey Forum, with a seating capacity of over 500, provides a venue for the Grenada Arts Partnership and a conference site for numerous groups. Since 2008, the Grenada Campus has partnered with the University of Mississippi Division of Outreach to offer selected undergraduate and graduate degree programs onsite with plans for future growth.

---

### **Ridgeland Campus**

The Ridgeland Campus opened in 1985 in Madison County, one of the fastest developing areas in the state. The campus is located approximately two miles north of the city of Jackson and a half-mile north of the Natchez Trace Parkway and I-55. The campus is situated on 80 acres of land at the intersection of West Ridgeland and Sunnybrook Road.

This campus offers instruction of academic courses for university transfer and career/technical programs that lead to employment following graduation. Ridgeland also houses the college's central office for Workforce Development programs and training, which improve the skills of existing employees, prepare students for a different career, and equip students to enter the workforce.

---

### **Attala Center**

The Attala Center is a modern education facility of approximately 75,000 square feet located less than one mile from Kosciusko's historic downtown square. In addition to academic offerings, the center is home to several career and technical programs and works in conjunction with business and industry to coordinate workforce programs to meet their individual training needs.

The coordination of the college's Adult Basic Education and high school equivalency preparation classes are also housed here. The Attala Center further serves as a meeting place for a variety of workshops, seminars, and conferences for the community.

---

### **Yazoo County Economic Development and Education Center**

This modernized educational facility is comprised of classroom and computer lab space located in the Yazoo Economic Development and Education Center in Yazoo City. The Yazoo Center provides academic courses, coordinates workforce program training, offers proctoring for eLearning, and functions as a meeting place for workshops and seminars for the college and local county agencies.



*Goodman Campus*

## Accreditation

Holmes Community College is accredited by the Southern Association of Colleges and Schools Commission on Colleges to award associate degrees and certificates. Contact the Southern Association of Colleges and Schools Commission on Colleges at 1866 Southern Lane, Decatur, Georgia, 30033-4097 or call (404) 679-4500 for questions about the accreditation of Holmes Community College.

Additionally, Holmes Community College has specific programs (see table below) that are accredited and/or approved through state, regional, and national organizations as well as accrediting agencies.

Program	Accrediting Agency	Most Recent Review	Next Scheduled Review
Associate Degree Nursing (ADN)	Accreditation Commission for Education in Nursing, Inc. and by the Board of Trustees of Institutions of Higher Learning	Spring 2019	Spring 2027
Cosmetology	Mississippi State Board of Cosmetology	Fall 2013	Spring 2020
Emergency Medical Services (EMS) Paramedic	Committee on Accreditation for Emergency Medical Services Professions	Fall 2018	Fall 2024
Mortuary Science	American Board of Funeral Service Education	Fall 2013	NA
Occupational Therapy Assistant (OTA)	Accreditation Council for Occupational Therapy Education	Fall 2014	Fall 2024
Physical Therapy Assistant (PTA)	Commission on Accreditation in Physical Therapy Education (CAPTE)	Spring 2017	Spring 2022
Practical Nursing	Mississippi Board of Nursing	Fall 2017	Fall 2025
Surgical Technology	Commission on Accreditation of Allied Health Education Programs (CAAHEP) upon the recommendation of the Accreditation Review Council on Education in Surgical Technology and Surgical Assisting (ARC-STSA)	Spring 2015	Spring 2025



# Program Pathways

---

## Academic Pathways

### Arts/Humanities/Language Pathway

#### Art/Music Pathway

Art  
Entertainment Industry Studies  
Music

#### Humanities Pathway

History  
Philosophy or Religious Studies

#### Language Pathway

Communications/Journalism/Mass  
Communications  
English  
Liberal Arts  
Spanish

### Business Pathway

Accounting  
Business Administration  
Economics  
Finance  
Management  
Marketing

### Education Pathway

Child Development/Child Care &  
Family Education  
Elementary/Special Education

#### Secondary Education Pathway

Biology/Science  
Chemistry/Physical Science  
English  
Mathematics  
Music – Instrument  
Music – Piano  
Music – Voice  
Physical Education/Kinesiology  
Physics  
Social Studies

### General College Pathway

General College Studies

### Health Sciences Pathway

Biological Science  
Pre-Allied Health

#### Dentistry Pathway

Pre-Dental  
Pre-Dental Hygiene

### Health-Related Pathway

Health Informatics & Information  
Management  
Health Sciences  
Pre-Medical Laboratory Science  
Pre-Occupational Therapy  
Pre-Physical Therapy  
Pre-Radiologic Sciences

### Medicine Pathway

Pre-Medical  
Pre-Nursing

### Pharmacy Pathway

Pre-Pharmacy

### Veterinary Pathway

Pre-Veterinary  
Pre-Veterinary Medical Technology

### Kinesiology Pathway

Athletic Training  
Exercise Science/Kinesiology  
Recreation  
Sport Management

### Public Safety/Social & Behavioral Science Pathway

#### Public Safety Pathway

Criminal Justice  
Forensic Science  
Pre-Law/Legal Studies

#### Social & Behavioral Science Pathway

Psychology  
Social Work/Sociology

### STEM: Science, Technology, Engineering, and

#### Mathematics Pathway

##### Engineering Pathway

Chemical/Biological/Petroleum  
Civil/Mechanical/Aerospace  
Electrical/Computer/Software

##### Science, Technology, and Mathematics Pathway

Agricultural Sciences  
Aviation Management  
Chemistry  
Computer Science  
Forestry  
Mathematics  
Wildlife, Fisheries, & Aquaculture

# Program Pathways

## Career Technical Pathways

### Health Science Programs Pathway

- Associate Degree Nursing Program
- Emergency Medical Sciences/Basic Program
- Emergency Medical Sciences/Critical Care Program
- Emergency Medical Sciences/Advanced EMT and Paramedic Program
- Mortuary Science Program
- Occupational Therapy Assistant Technology Program
- Physical Therapist Assistant Program
- Practical Nursing Program
- Surgical Technology Program

### Industrial Studies Pathway

- Automotive Technology
- Collision Repair Technology
- Engineering Technology
  - Architectural Engineering Technology
  - Construction Technology
  - Drafting & Design Technology
  - Industrial Engineering Management Technology
  - Industrial Technology
  - Interior Design Technology
- Heating/Vent/AC/Refrigeration Technology
- Industrial Mechanics and Maintenance Technology:
  - Industrial Maintenance Mechanics
  - Industrial Maintenance Technology
- Precision Machining Technology
- Welding & Cutting Technology



*Career Technical Pathway*

### Professional Studies Pathway

- Business Technology
  - Accounting Technology
  - Administrative Office Technology
  - Billing & Coding Technology
  - Business Management Technology
  - Medical Office Technology
- Conservation Law Enforcement Technology
- Cosmetology
- Criminal Justice Administration Technology
- Forest Technology
- Information Systems Technology:
  - Computer Engineering Technology
  - Computer Networking Technology
  - Software Engineering Technology
- Paralegal Technology

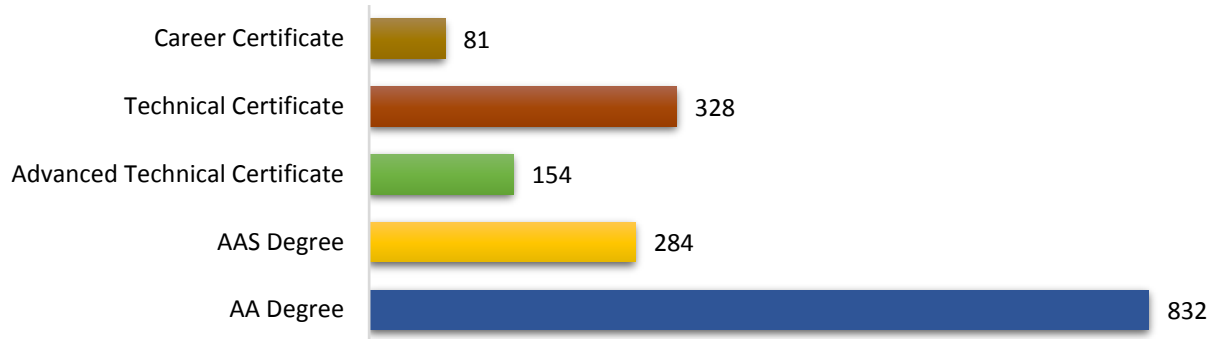


*Academic Pathway*



# Institutional Characteristics

## Awarded Degrees and Certificates (1,679 Total)



### Top Pathways of AA Degrees Awarded

Pathway Programs	Count
Pre-Nursing (BS)	133
General College Studies	98
Business Administration	77
Psychology	41
Accounting	38
Elementary/Special Education	39
Criminal Justice	30
Social Work/Sociology	28
Engineering Civil/Mechanical/Aerospace	27
Biological Science	21
Pre-Allied Health	21
Pre-Physical Therapy	21
Secondary Education (Phys Ed/Kinesiology)	20
Computer Science	14
Pre-Medical	12
Pre-Pharmacy	12
Athletic Training	11
Exercise Science/Kinesiology	11
Marketing	11
Pre-Radiologic Sciences	11
Pre-Veterinary	10

### Top Pathways of AAS Degrees Awarded

Pathway Programs	Count
Associate Degree Nursing (ADN)	75
Billing and Coding Technology	27
Medical Office Technology	22
Paralegal Technology	17
EMS – Paramedic	16
Occupational Therapy Assistant Technology	14
Computer Networking Technology	11
Surgical Technology	11
Physical Therapist Assistant	10
Business Management Technology	7
Industrial Maintenance Mechanics	7
Administrative Office Technology	6
Computer Engineering Technology	6
Construction Technology	6
EMS – Critical Care Paramedic	6
Drafting and Design Technology	5
Industrial Technology	5
Architectural Engineering Technology	4
Architectural Engineering Technology	4
Industrial Engr Management Technology	4
Industrial Maintenance Technology	4

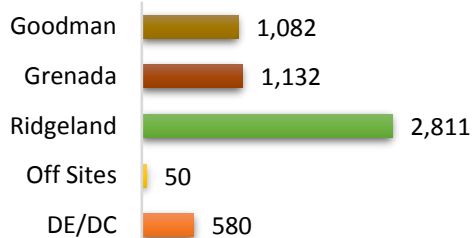


Choctaw and Webster Dorms beside Frank Branch Coliseum, Goodman Campus

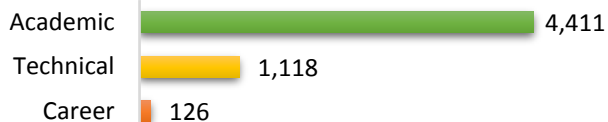
# Enrollment

## Student Enrollment (5,655 Students Total)

### by Campus

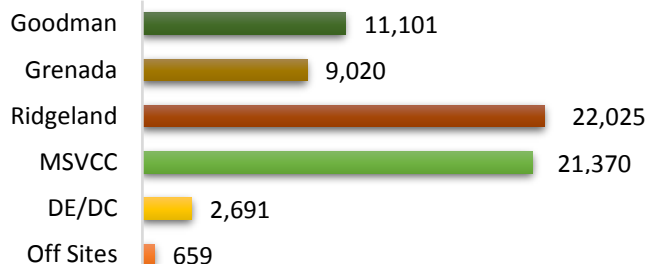


### by Curriculum

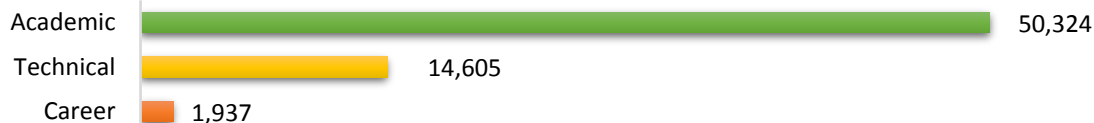


## Credit Hours Enrollment (66,866 Hours Total)

### by Campus



### by Curriculum



## Top Pathways Enrollment

Pathway Programs	Count
General College Studies	557
Pre-Nursing (BS)	549
Associate Degree Nursing	266
Business Administration	243
Elementary/Special/Secondary Education	215
Engineering	179
Pre-Allied Health	141
Psychology	117
Criminal Justice	105
Pre-Physical Therapy	105
Accounting	90
Welding and Cutting Technology	88
Pre-Medical	85
Social Work/Sociology	84
Practical Nursing	83
EMD – Paramedic	75
Billing and Coding Technology	70
Child Development/Child Care and Family	65
Biological Science	62



Attala Center, Kosciusko



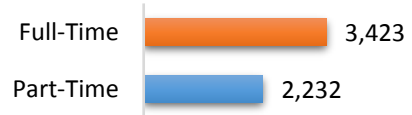
Yazoo Center, Yazoo City

# Student Characteristics (5,655 Students Total)

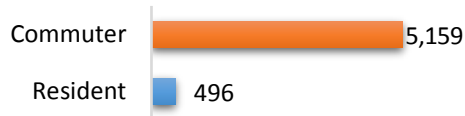
## Classification Level



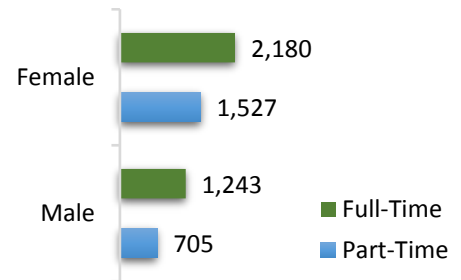
## Enrollment Status



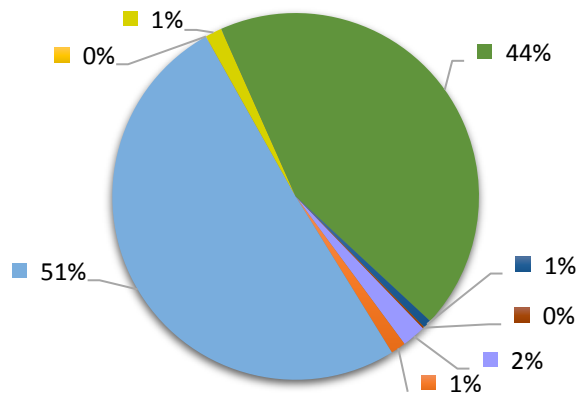
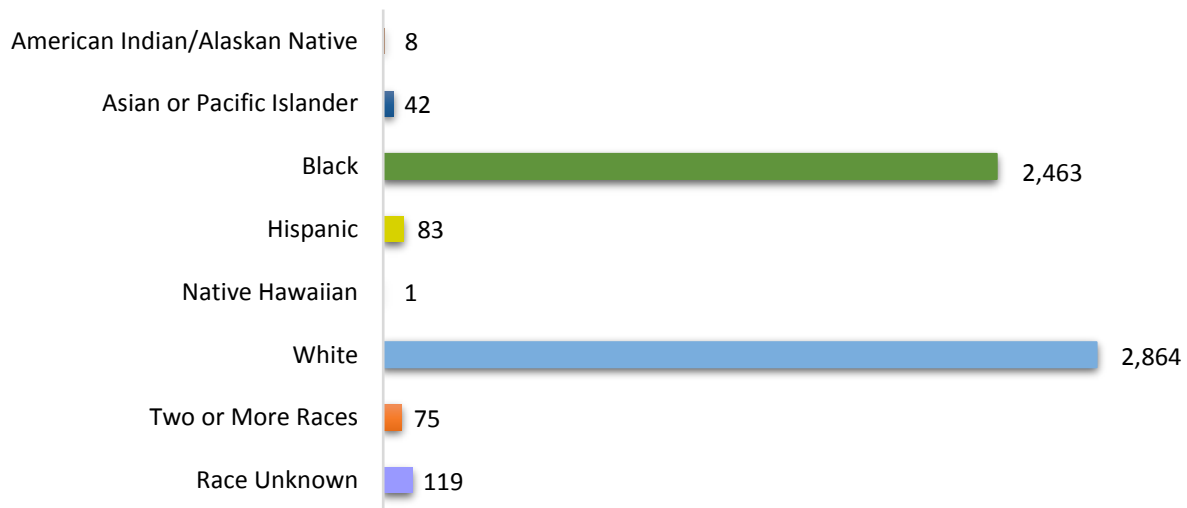
## Residency Status



## Gender Comparison



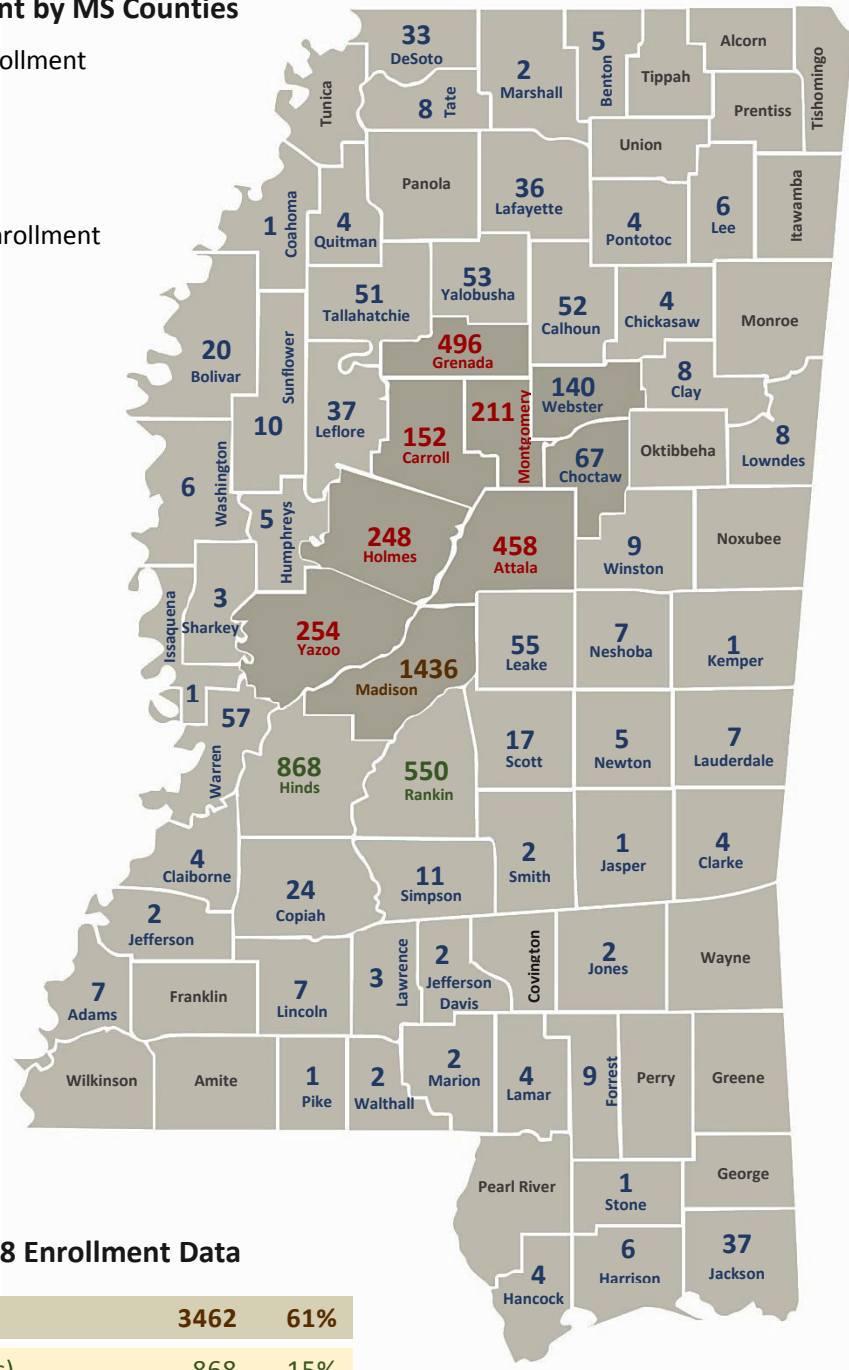
## Ethnicity



# Fall Enrollment by Residence

## Fall 2018 Enrollment by MS Counties

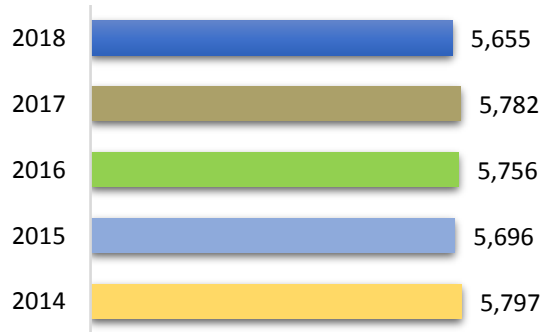
- < 3% of enrollment
- 4% – 9%
- 10% - 15%
- > 16% of enrollment



## Additional Fall 2018 Enrollment Data

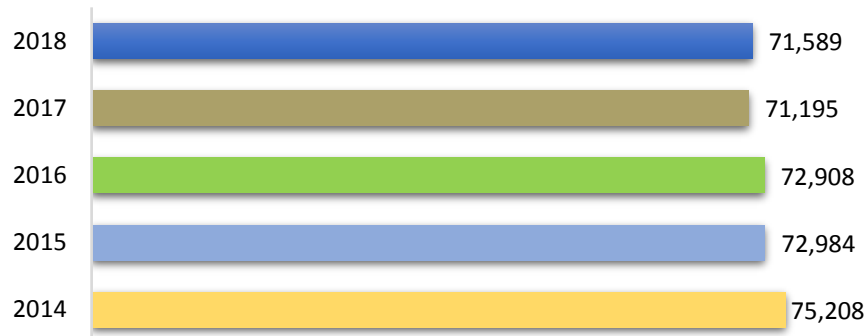
District	3462	61%
Out of District (Hinds)	868	15%
Out of District (Rankin)	550	10%
Out of District (Other)	724	13%
Out of State	51	1%
<b>Total Fall 2018 Enrollment</b>	<b>5655</b>	<b>100%</b>

## Five-Year Fall Enrollment Trend of Holmes CC



## Five-Year Fall Enrollment Trend of MS Two-Year Public Institutions

Source: The Chronicle of Higher Education Almanacs of 2014-2015 through 2019-2020



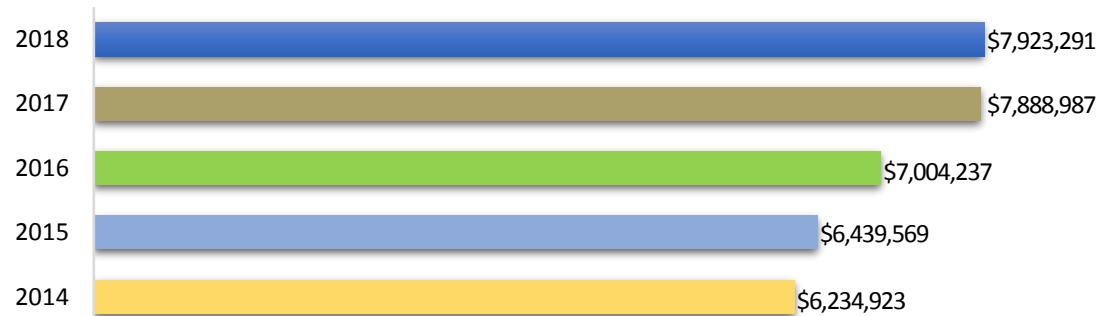
## Full-Time Faculty Characteristics 2018

Doctorate	18	11%
Specialist	4	2%
Master's	109	69%
Bachelor's	12	8%
Associate's	12	8%
Certificate	3	2%



Grenada Hall, Goodman Campus

## Development Foundation



## Mississippi Demographic Data Comparison 2019

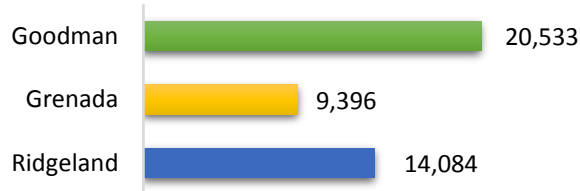
Demographics		Nation	Mississippi
Populations	(State Rank: 34)	325,719,178	2,984,100
Per Capita Income	(State Rank: 51)	\$32,397	\$23,121
Poverty Rate		13.4%	19.8%
<b>Age Distribution</b>			
Up to 4		6.1%	6.1%
5 to 14		12.7%	13.7%
15 to 19		6.6%	7.5%
20 to 24		6.7%	7.0%
25 to 44		26.4%	24.9%
45 to 64		25.9%	25.2%
64 and older		15.6%	15.6%
<b>Racial and Ethnic Distribution</b>			
American Indian		0.8%	0.5%
Asian		5.6%	0.9%
Black		12.7%	38.0%
Pacific Islander		0.2%	0.0%
White		72.3%	58.2%
More than One Race		3.3%	1.4%
Hispanic (may be any race)		18.1%	2.9%
Other		5.1%	1.0%
<b>Educational Attainment of Adults</b>			
8th grade or less		5.1%	4.8%
Some High School, no Diploma		6.9%	10.8%
High-School Diploma		27.1%	30.4%
Some College, no Degree		20.4%	22.0%
Associate Degree		8.5%	10.1%
Bachelor's Degree		19.7%	13.5%
Master's Degree		8.8%	6.0%
Doctoral Degree		1.4%	1.0%
Professional Degree		2.1%	1.4%
<b>New High-School Graduates</b>			
Total for 2018-19		3,408,036	28,249
Projected Change: 2019-20 to 2029-30		- 4.1%	-12.5%
High-School Dropout Rate		3.9%	4.8%
Average ACT Score	(Holmes CC: 19.6)	20.8	18.6
<b>Enrollment Highlights</b>			
Public 4-Year Institutions		8,856,035	80,730
Public 2-Year		5,706,678	71,589
Private 4-year, Nonprofit		4,074,762	17,576
Private 2-Year, Nonprofit		43,390	n/a
Private 4-Year, For-Profit		914,454	359
Private 2-Year, For-Profit		186,701	1,497
<b>Degrees Awarded</b>			
Associate		998,329	13,497
Bachelor's		1,956,373	15,219
Master's		808,599	5,176
Doctorate		181,636	1,421
<b>Average Pay of Full-Time Faculty of 2-Year Colleges</b>			
Public		\$63,745	\$49,828
Private Nonprofit		\$43,095	n/a

*The Chronicle of Higher Education Almanac 2019-20, Vol. LXV, No. 40, August 23, 2019*

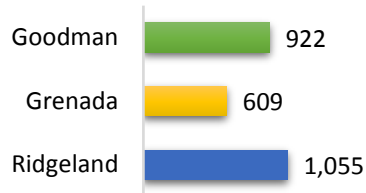


# Library Resources and Expenditures

## Library Collections (319,484 Shared eBooks; 363,497 Total)



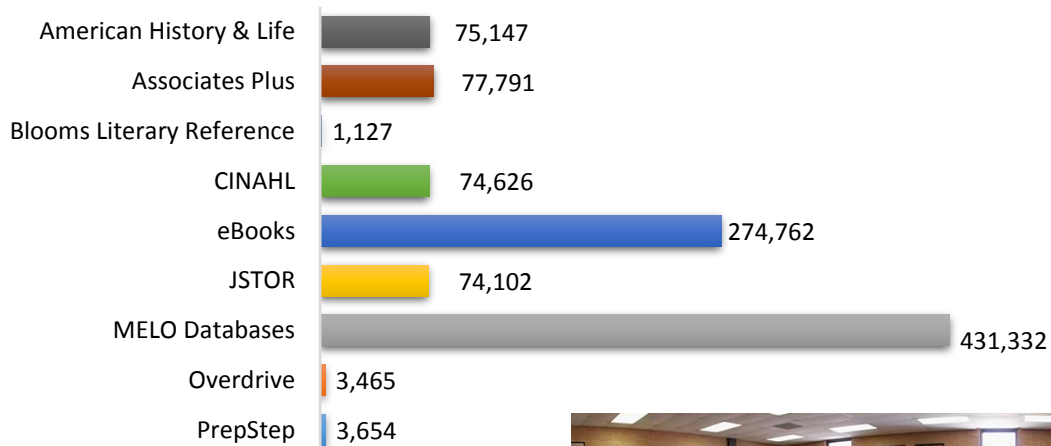
## Library Circulations (2,586 Total)



## Library Expenditures (\$774,964 Total)



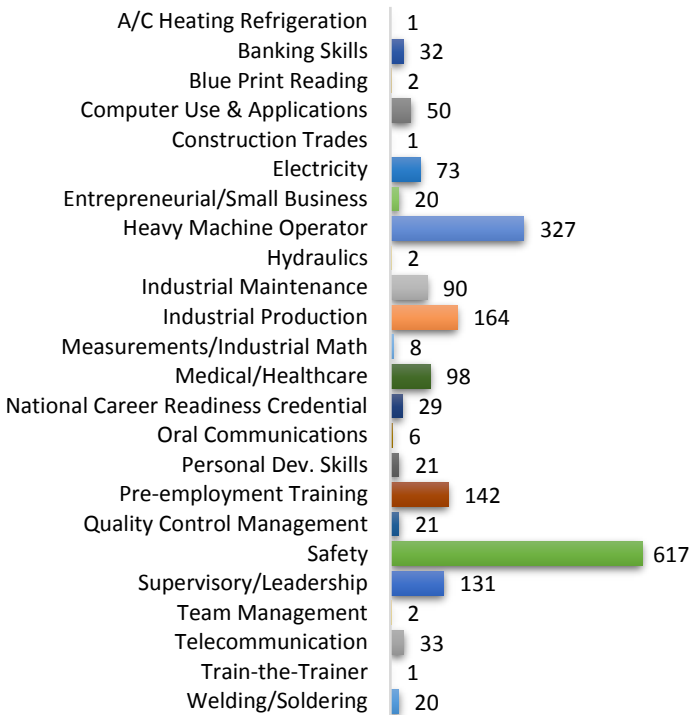
## Library Database Usage (7,502,526 EBSCO Discovery; 8,518,532 Total)



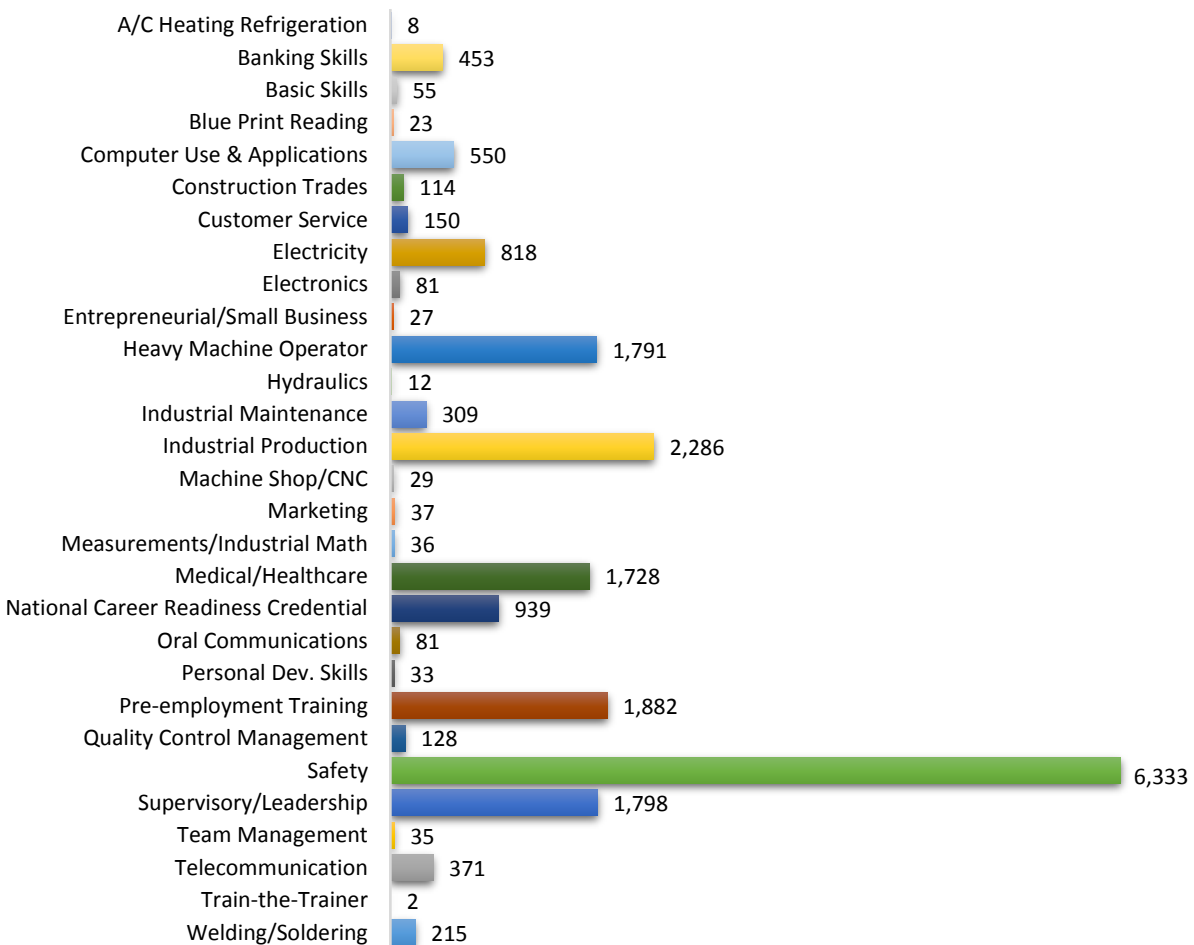
McMorrough Library, Goodman Campus

# Workforce Development Training Activity Report

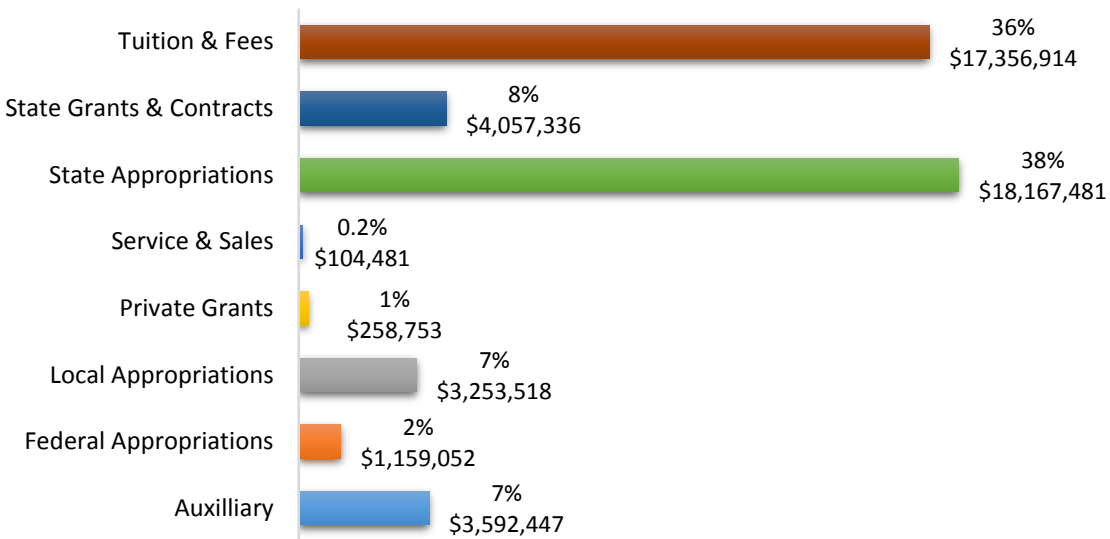
## Classes (1,891 Total)



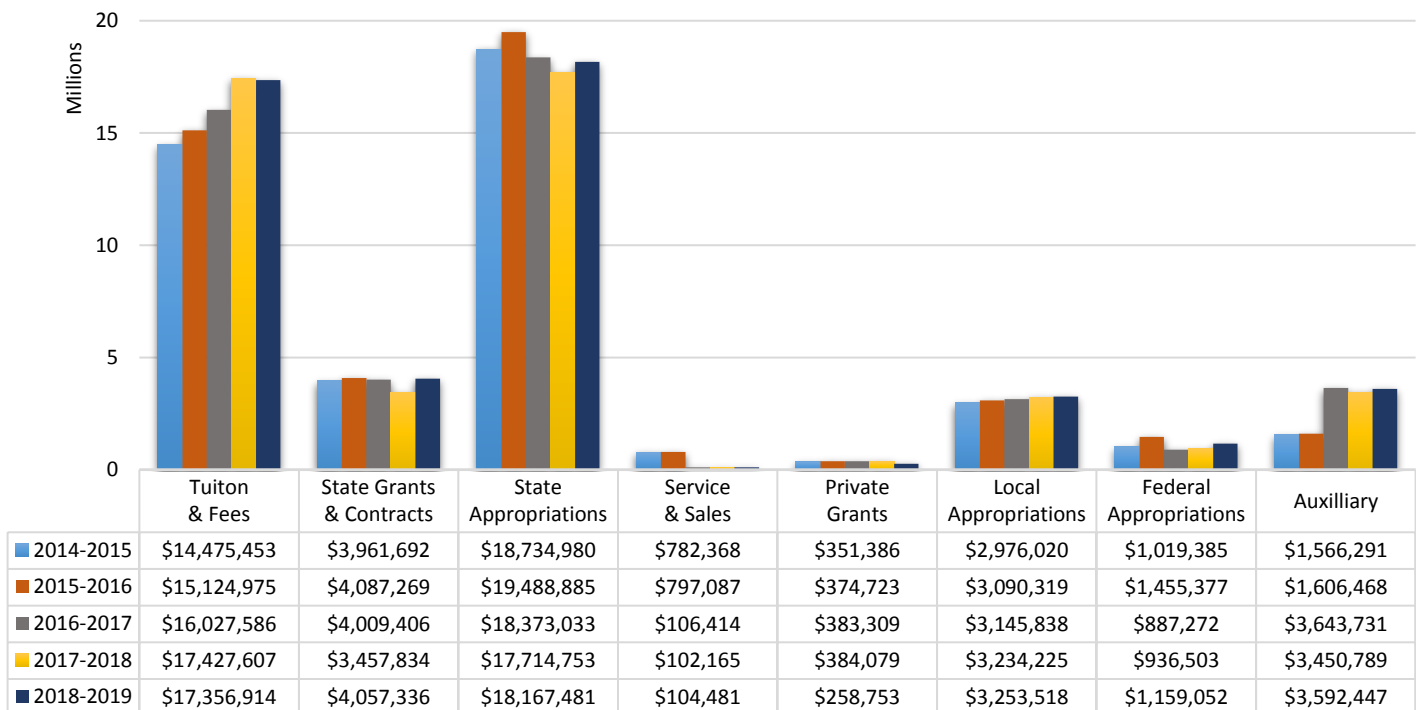
## Trainees (20,324 Total)



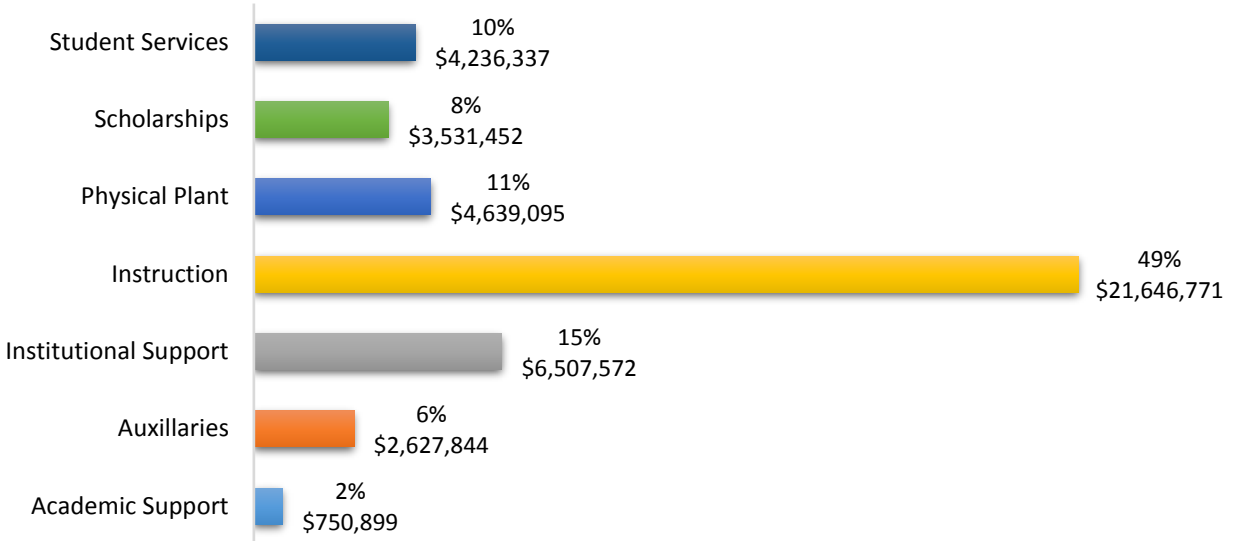
## Revenue by Source (FY 2018-19) (\$51,331,852 Total)



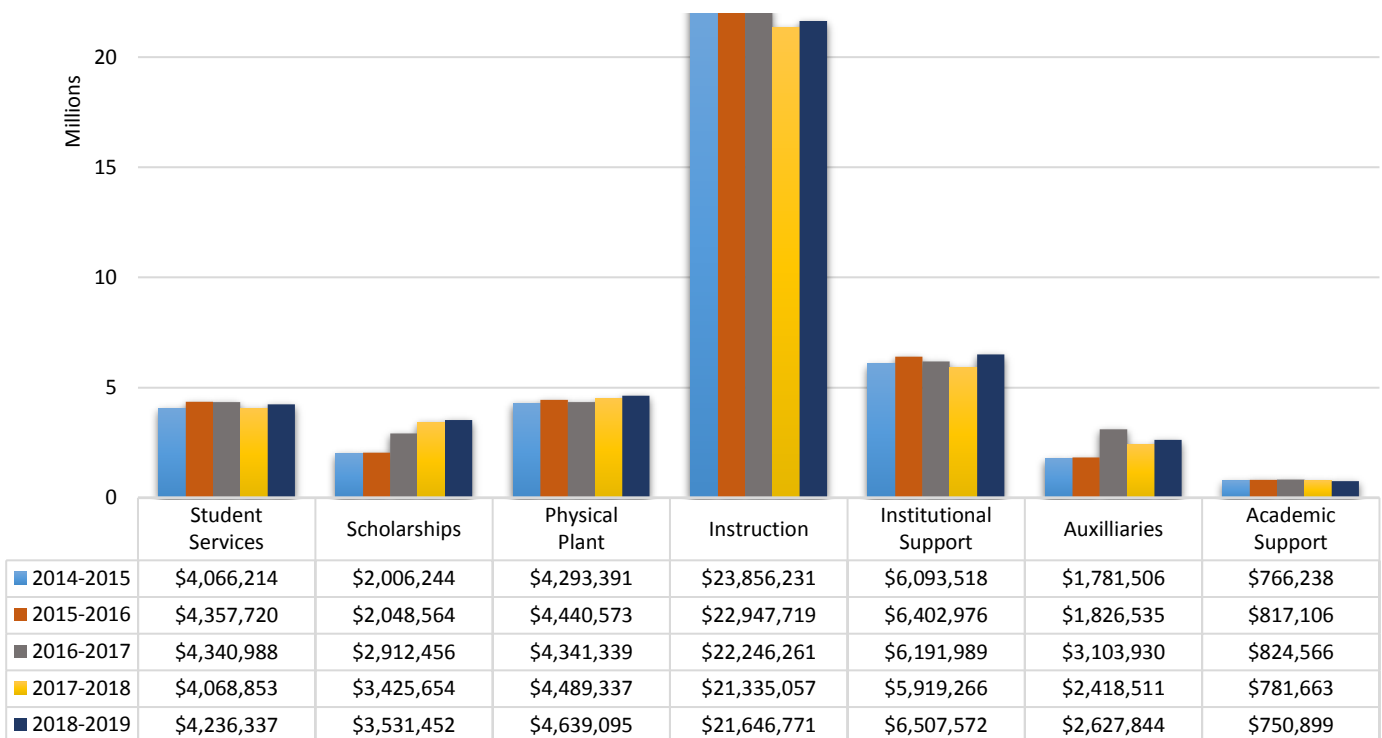
## Five-Year Trend of Revenue by Source



## Expenditures by Function (FY 2018-19) (\$43,939,970 Total)



## Five-Year Trend of Expenditures by Function

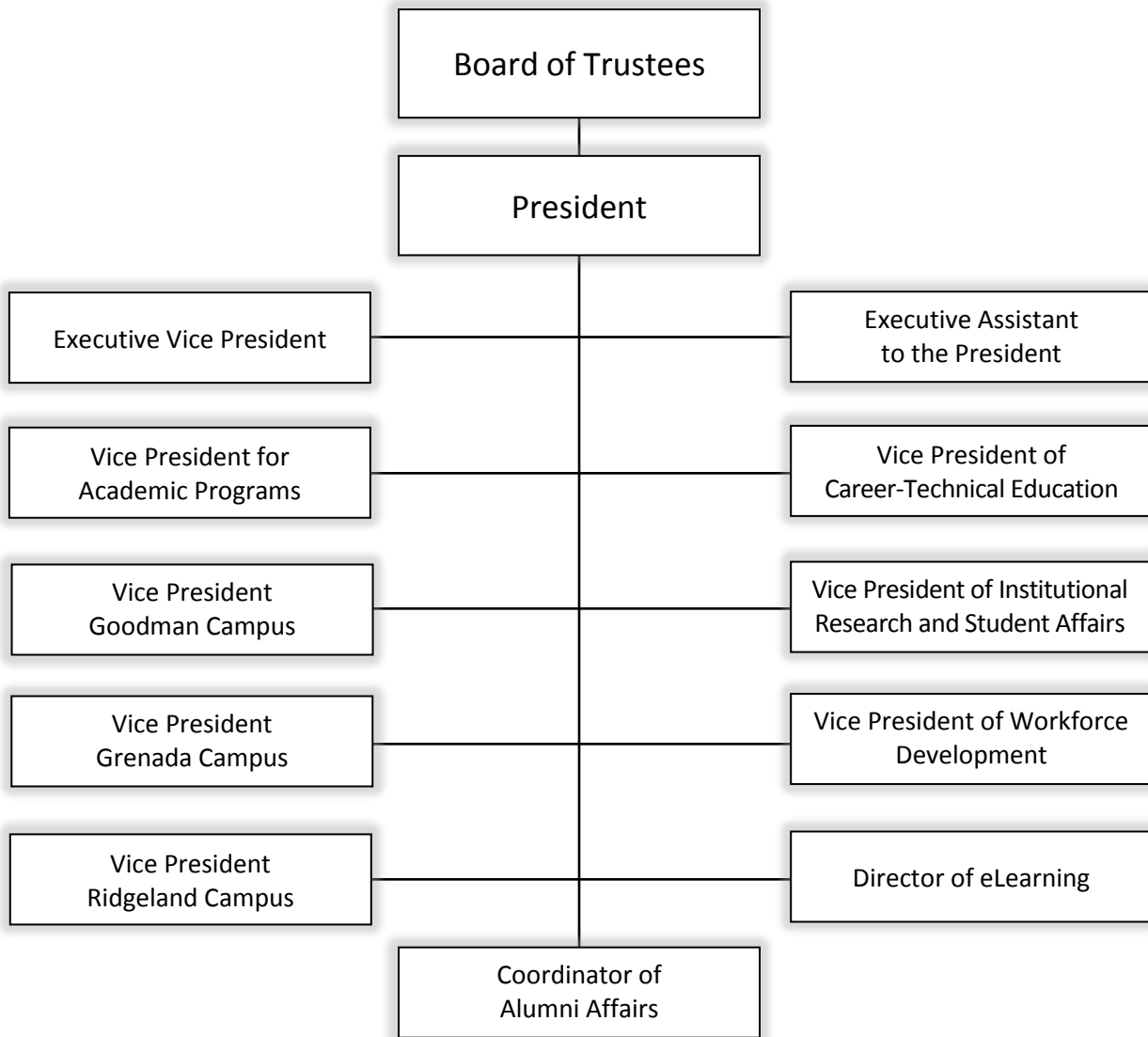




# Organizational Charts

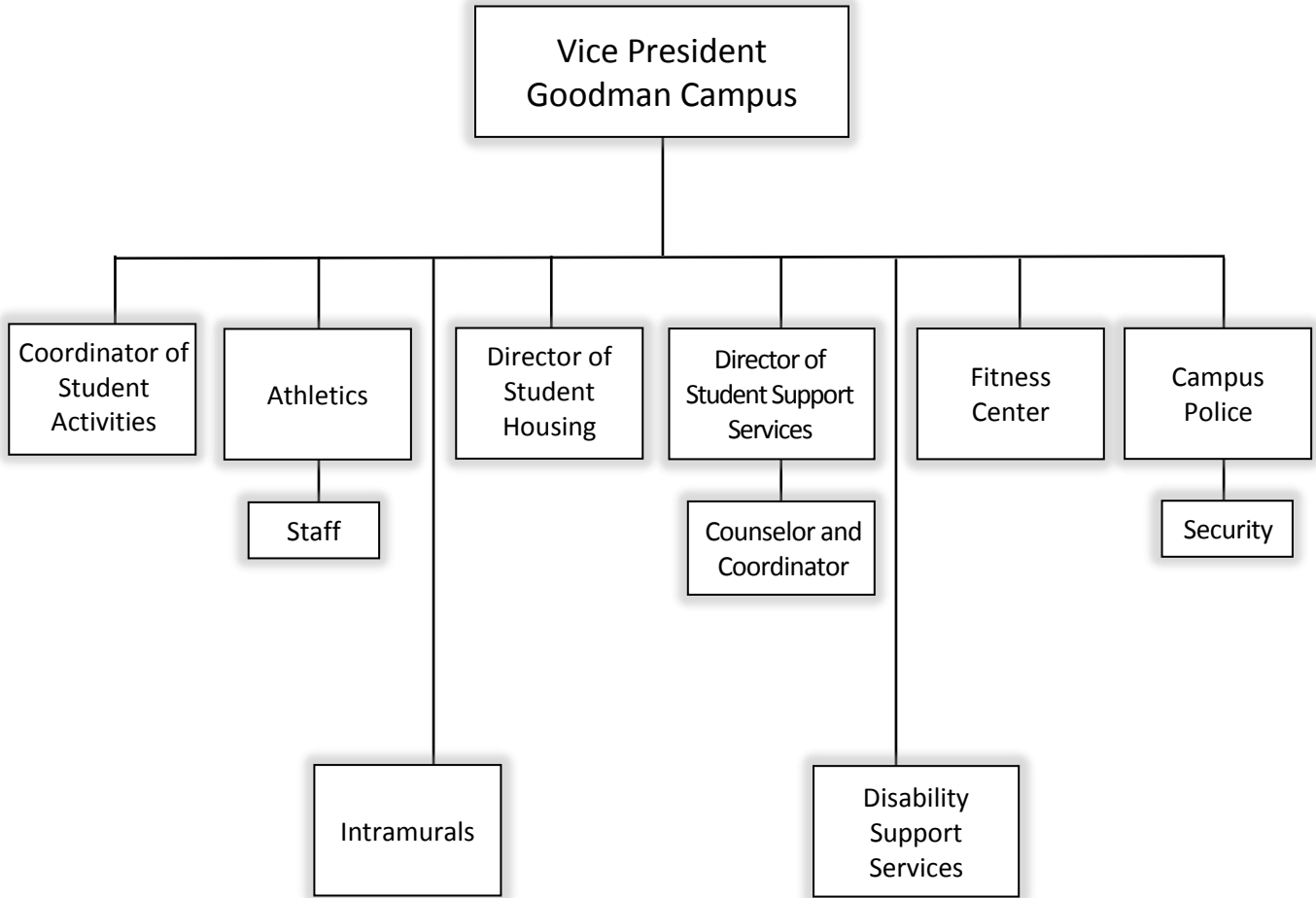
## Holmes Community College District

Revised 8/7/18



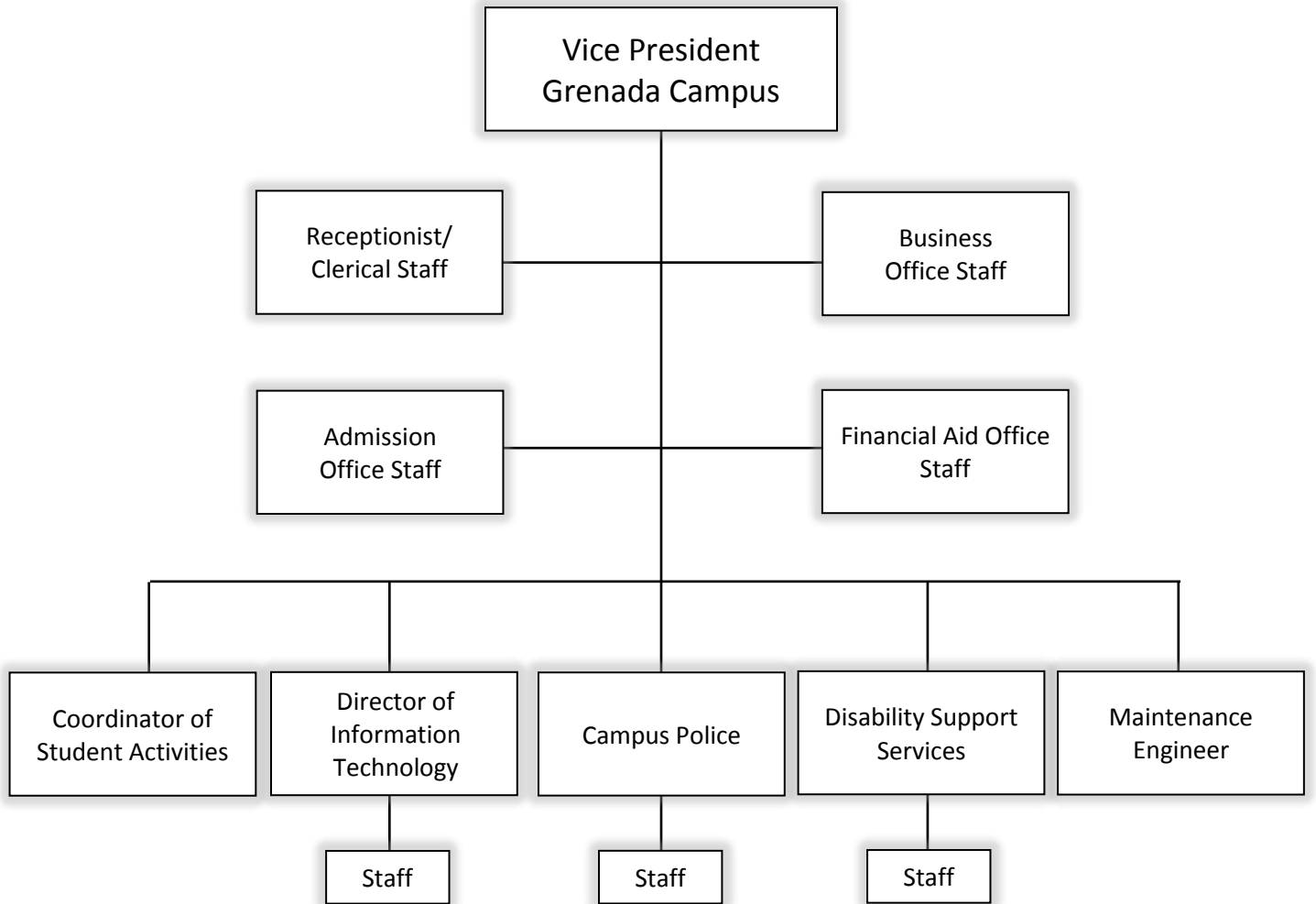
# Goodman Campus

Revised 7/1/19



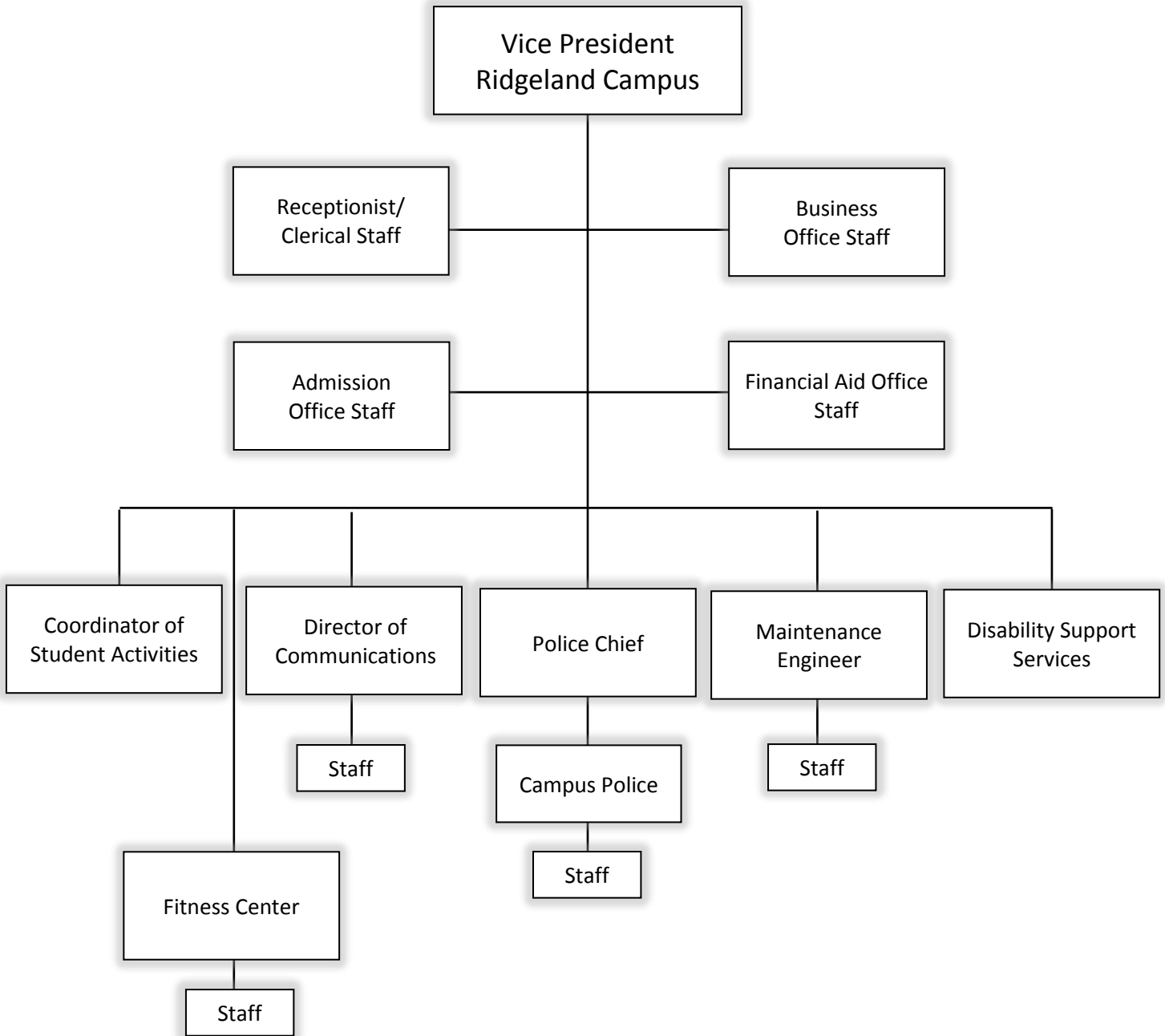
# Grenada Campus

Revised 8/7/18



# Ridgeland Campus

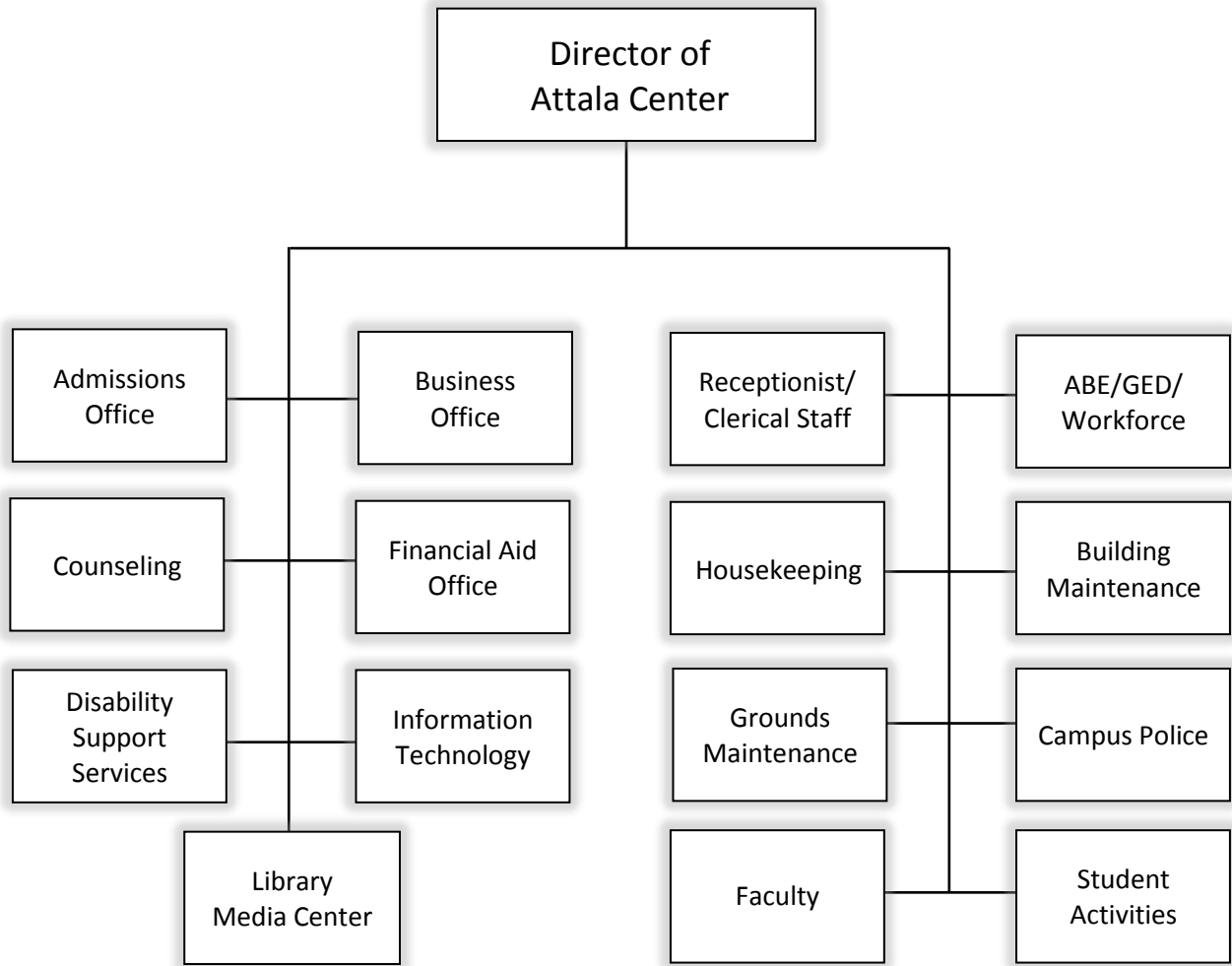
Revised 8/7/18





# Attala Center

Revised 7/1/19

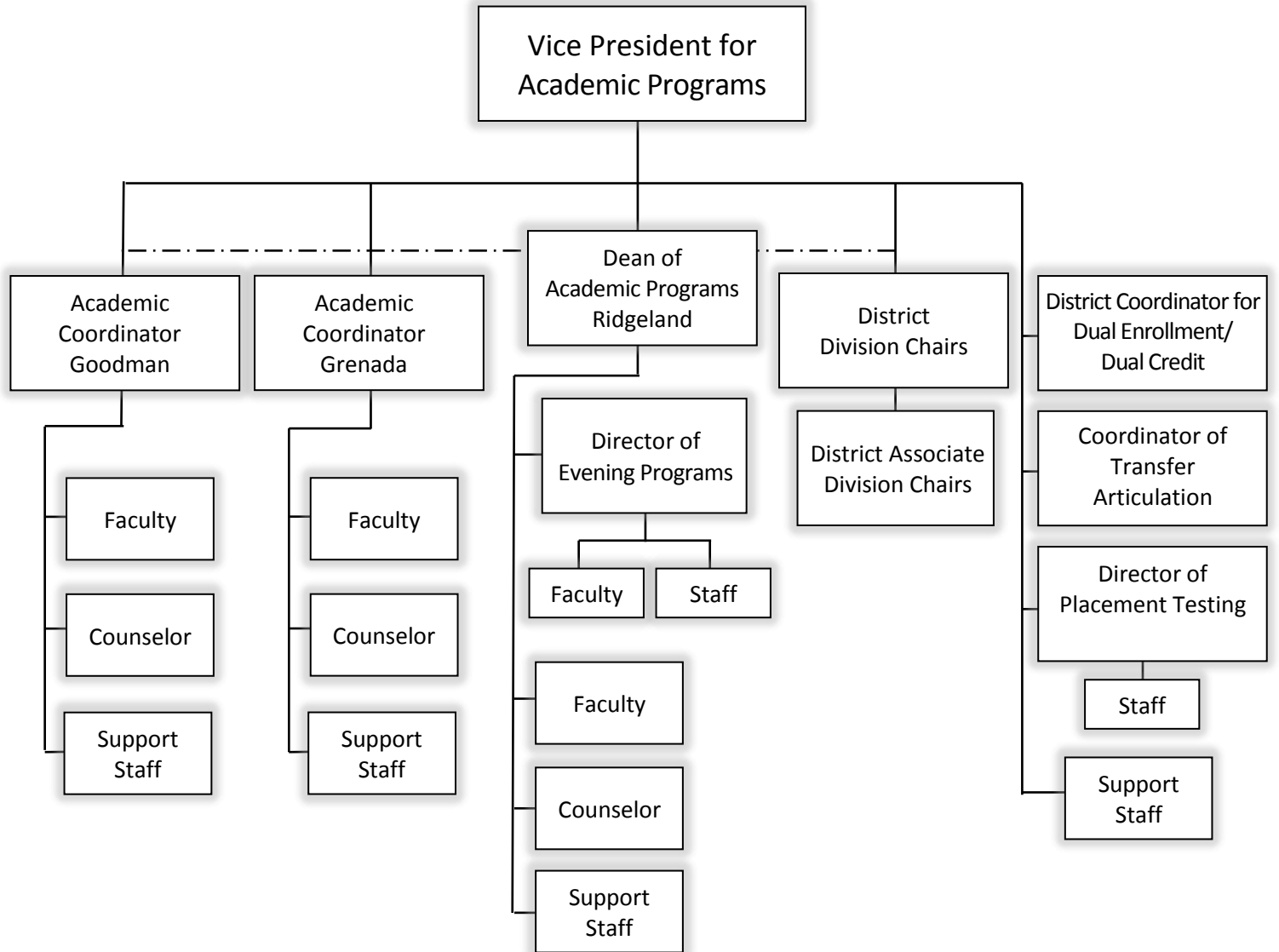


These services will be coordinated through each office of the provided service.

Faculty will report to the Program Dean/Director and Vice Presidents.

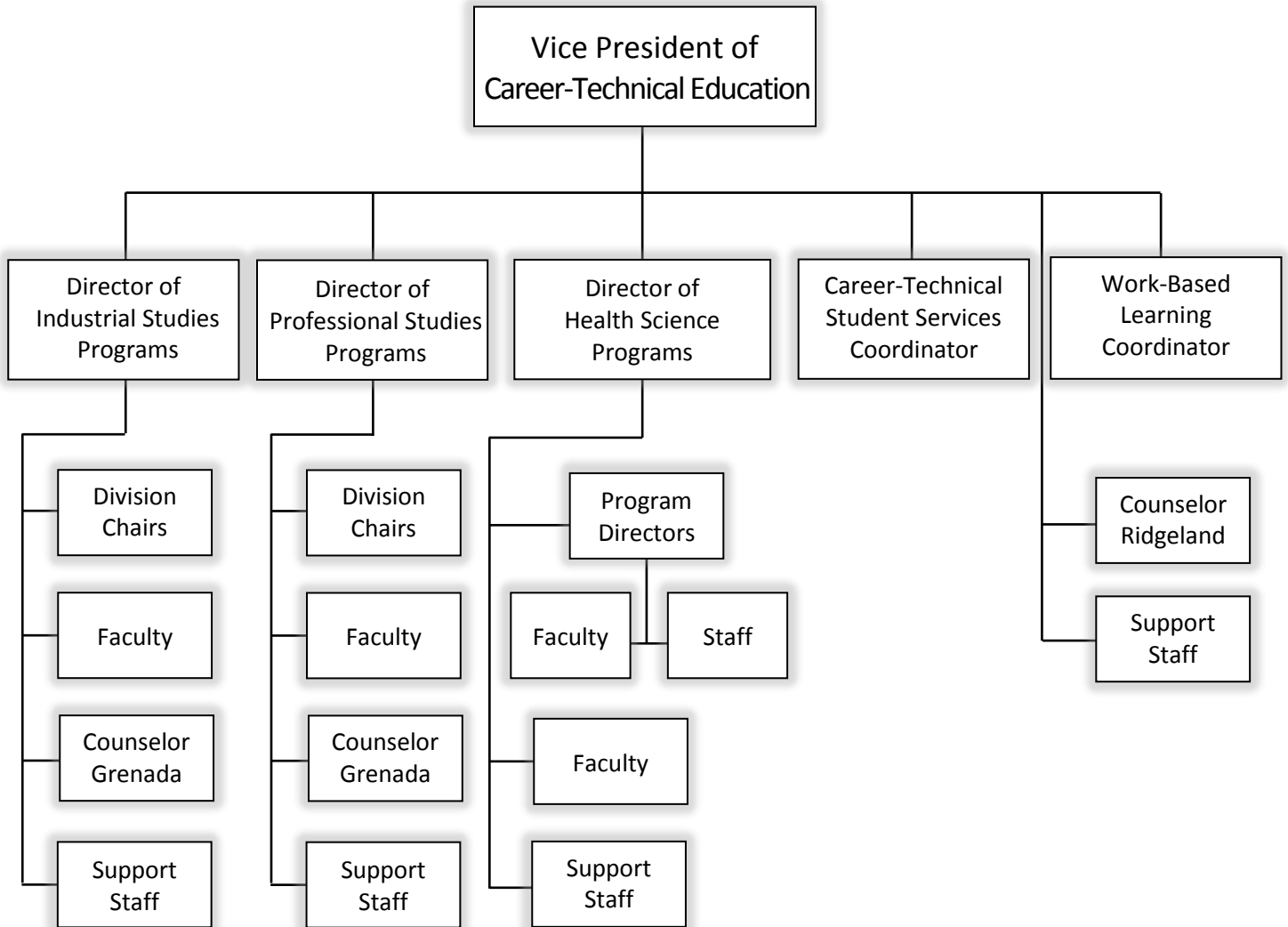
# Academic Programs

Revised 7/1/19



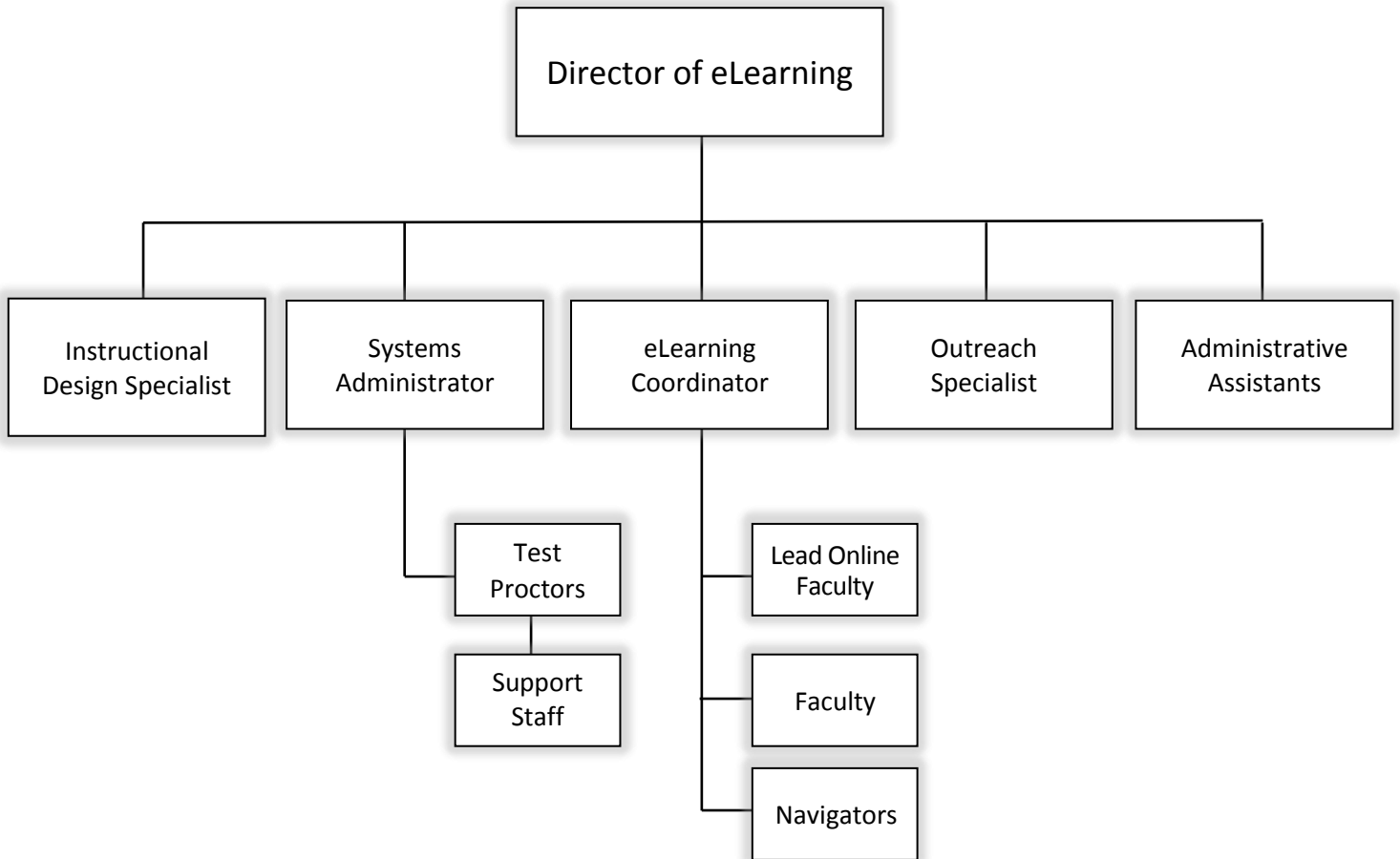
# Career-Technical Programs

Revised 7/1/19



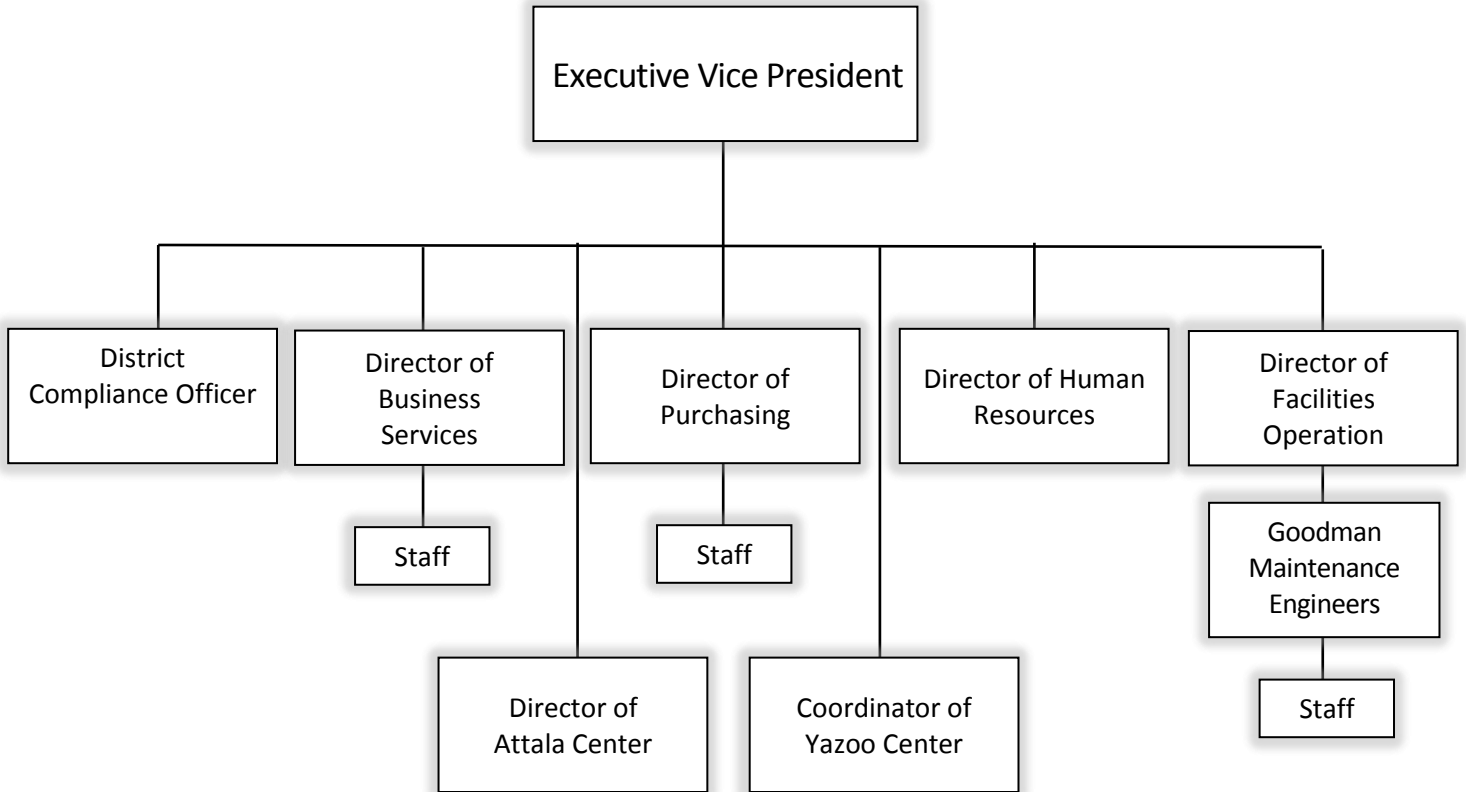
# eLearning

Revised 6/1/17



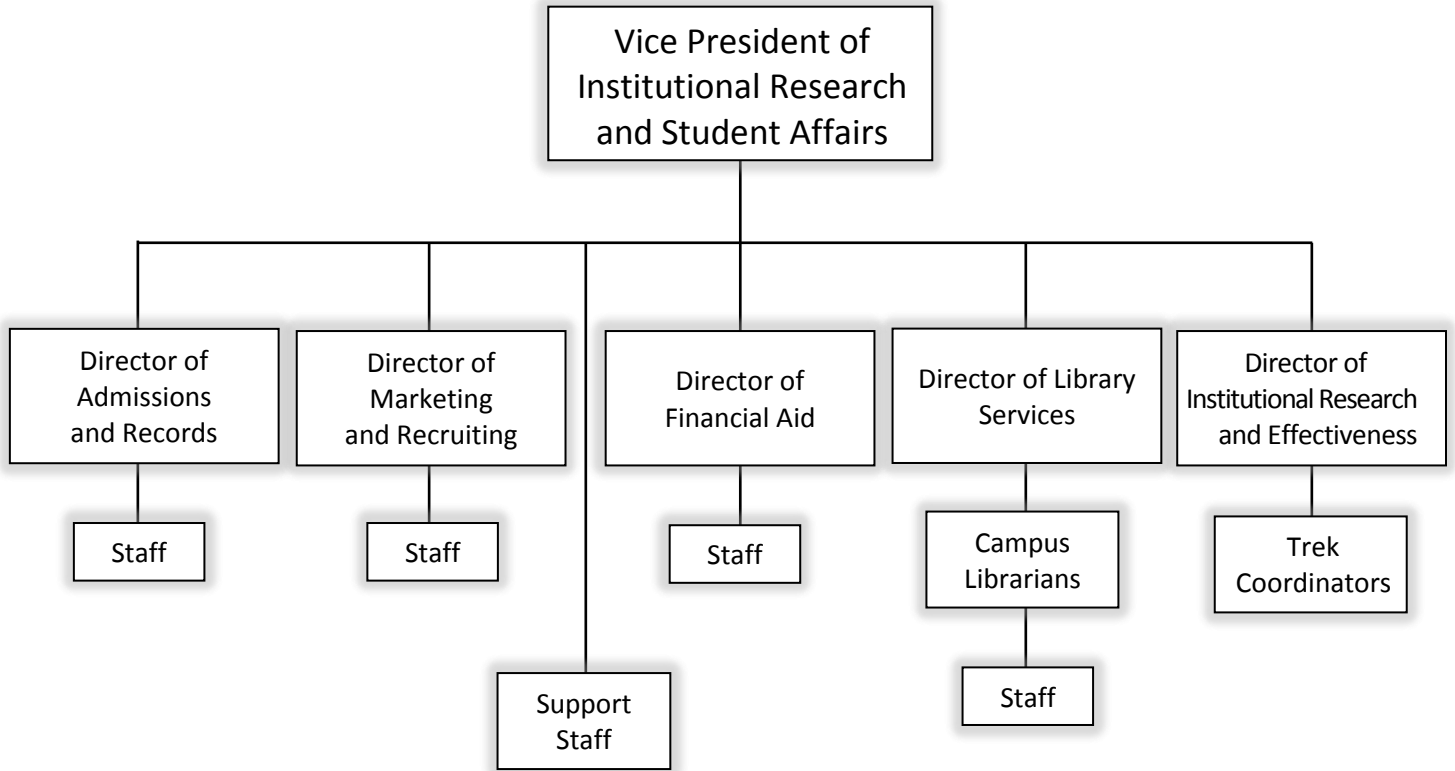
# Financial Services

Revised 7/1/19



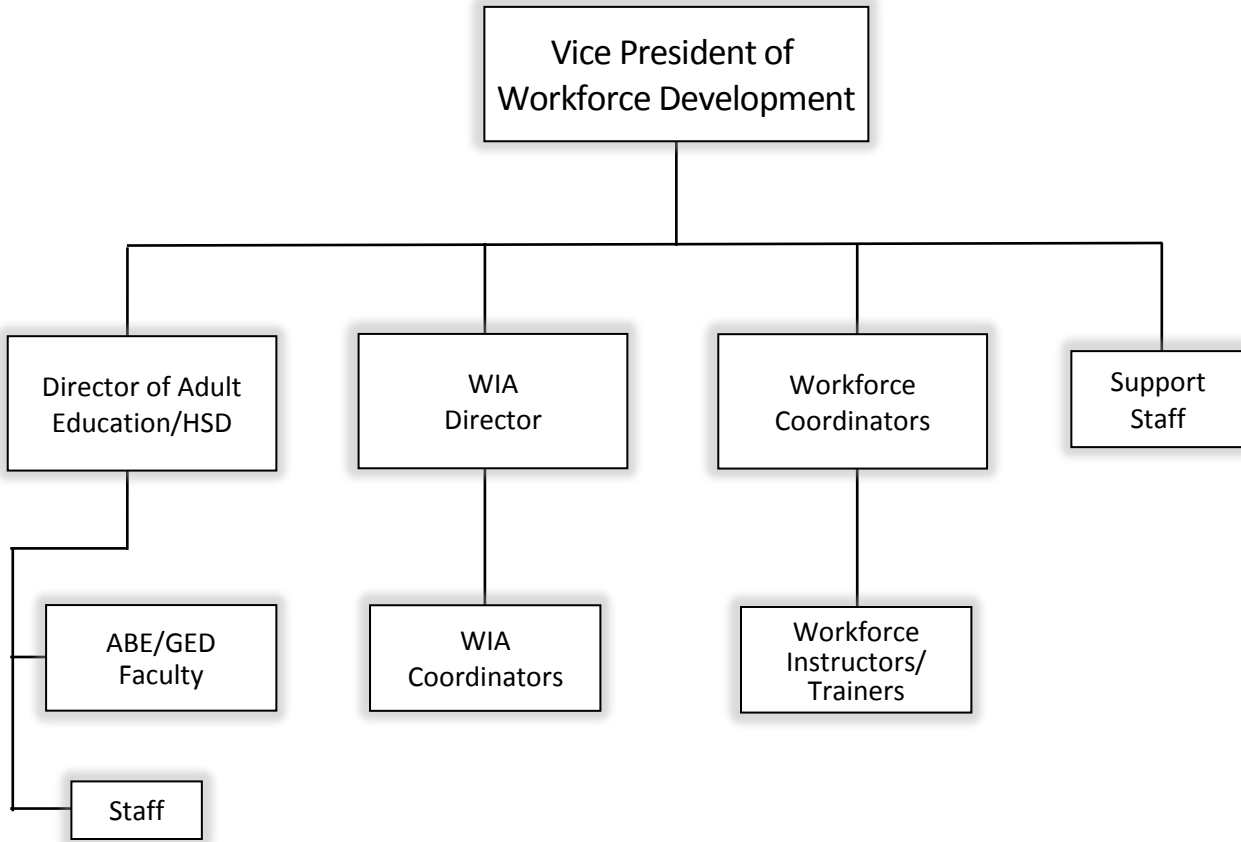
# Institutional Research and Student Affairs

Revised 5/8/14



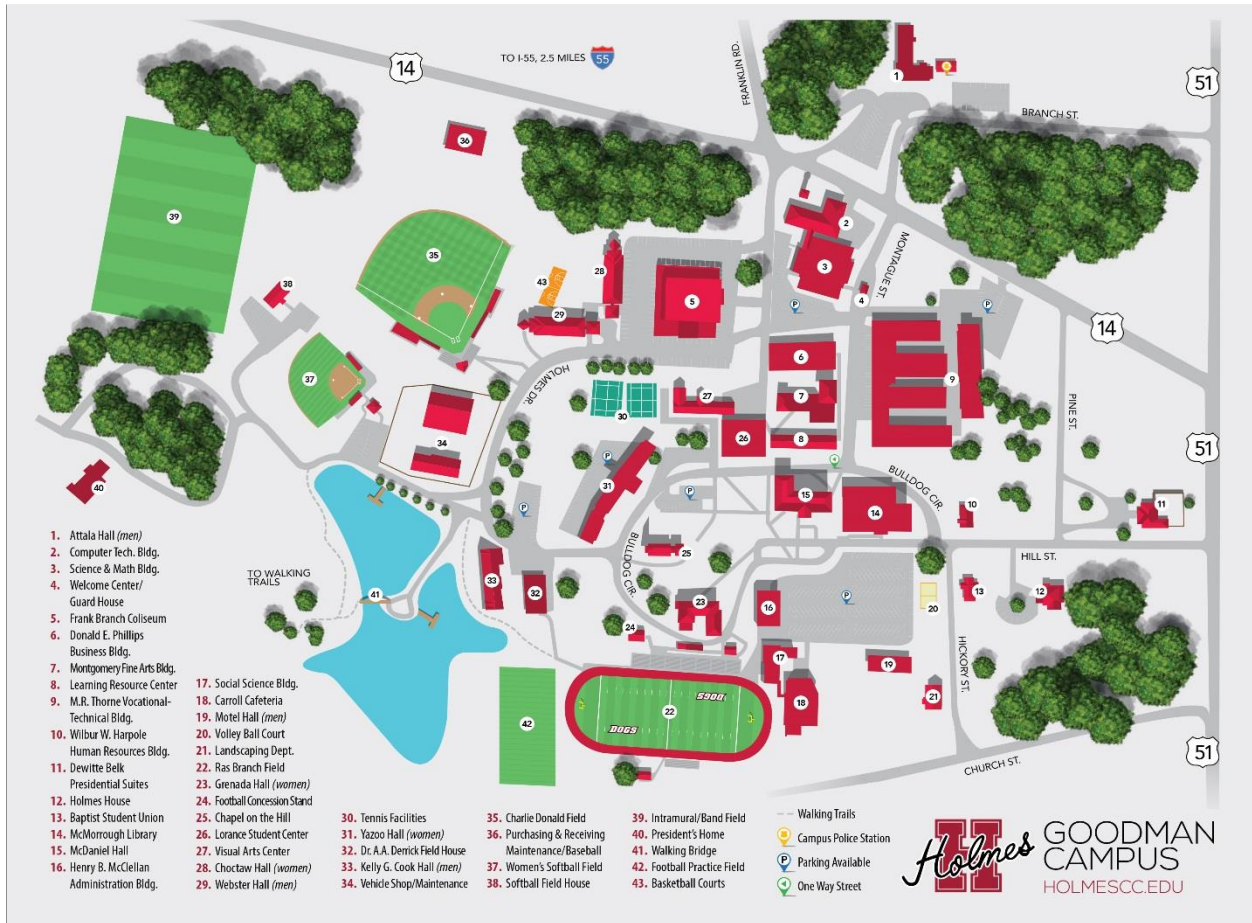
# Workforce Development

Revised 6/30/18





# Campus Maps

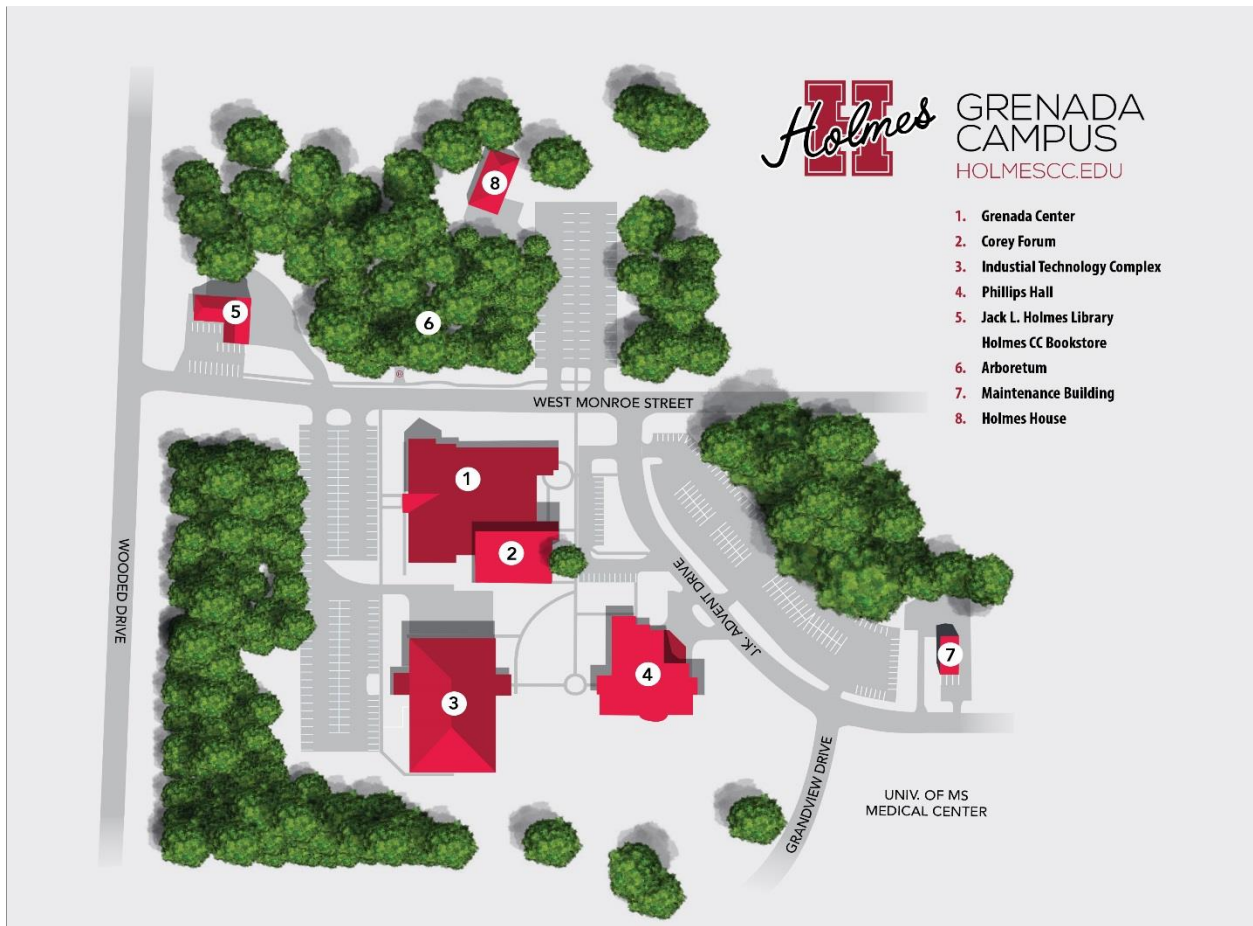


Chapel on the Hill, Goodman Campus





# Campus Maps



Corey Forum, Grenada Campus



# Campus Maps



Ridgeland Hall, Ridgeland Campus



# Evaluation and Contact Information

Comments and suggestions of this Factbook are welcomed to assist the Office of Institutional Effectiveness and Research in improving future issues of the Holmes Community College Factbook.

Please mail/email to the address below and include the following information:

- Your name and division, department and/or affiliation with Holmes Community College;
- List/describe any information that may be added to the next Factbook;
- Comment on any information contained in this Factbook that may need clarification or deletion (with page reference(s) included);
- Additional comments or suggestions.

Dr. Stephanie C. Diffey  
Director of Institutional Research and Effectiveness  
P.O. Box 369  
Goodman, MS 39079  
[scdiffey@holmescc.edu](mailto:scdiffey@holmescc.edu)  
(662) 472-9101



*Walking Path around the Lake, Goodman Campus*