

HOLMES COMMUNITY COLLEGE ALUMNI ASSOCIATION

# PAW PRINTS

FALL 2021 | VOLUME 35 - ISSUE 2



# 2021 Alumni Association *Awards*

See full bios at [holmescc.edu/alumni/outstanding-alumni/](http://holmescc.edu/alumni/outstanding-alumni/).



## **DORIS BELK** **ALUMNA OF THE YEAR**

Doris Belk of Kosciusko is Holmes' 2021 Alumna of the Year, among one of the college's highest alumni honors.

A Native of Ethel, Belk graduated as valedictorian from Ethel High School.

After high school, Belk graduated from Holmes in 1955 and continued on to Mississippi State University.

Belk is owner and president of Mitchell Metal Products, Inc., which she built with her late husband, Dewitte Belk. Mitchell Metals is a privately-held manufacturer of HVAC sheet metal products.

Belk's dedication to the industry has led her to serve as a member of the Air Distribution Institute, Mississippi Manufacturers Association and National Association of Manufacturers.

Holmes has stayed close to Doris' heart over the years. Belk has also volunteered on the fundraising committee to renovate and furnish the old President's Home, as well as the fundraising and furnishing committee for the Chapel on the Hill. She currently serves as the Holmes Board of Trustees secretary, as well as the Holmes Development Foundation Board of Directors and the Board of Governors as secretary.

Belk is also an accomplished artist. One of her courthouse paintings hangs in the Holmes Trustee Boardroom.



## **DR. DUSTIN GENTRY** **YOUNG ALUMNUS OF THE YEAR**

Dr. Gentry is a native of Kosciusko and 2005 graduate of Holmes. He was the editor of the Growl, a Holmes Ambassador, active in the Baptist Student Union and a member of Phi Theta Kappa, where he served as vice president. He received the Michael Klauk Award, W.Y. Sudduth Social Science Award and was selected for Hall of Fame.

Dr. Gentry attended Mississippi State after Holmes, where he earned a Bachelor of Science in Biochemistry and Molecular Biology. He then attended medical school at the University of Mississippi Medical Center where he earned a Doctorate of Medicine in 2011.

During his residency, Gentry simultaneously earned a Master of Business of Administration and Doctorate of Medicine from the University of Texas at Tyler, completing both in 2014.

Dr. Gentry currently serves as an attending physician and chief of medical staff at Winston Medical Center in Louisville. He also acts as associate medical director for Quality Hospice, and serves on the Board of Directors for the Mississippi Academy of Family Physicians where he is on the Legislative Action Committee.

In 2021, the Mississippi Association of Family Physicians recognized Dr. Gentry as their Young Physician of the Year.



## **DR. BRADY RICHARDSON** **DISTINGUISHED SERVICE AWARD**

Dr. Brady Richardson is the 2021 Distinguished Service Award Recipient. The Alumni Association gives out this award to a committed individual who shows dedicated service to Holmes.

Dr. Richardson was very active on campus during his time in Goodman. He served as SGA president, was voted Who's Who, selected for Hall of Fame, played tennis, was active on the Scholar's Bowl team and was a member of Phi Theta Kappa. Dr. Richardson was also valedictorian of the class of 1995.

After Holmes, Dr. Richardson continued on to Mississippi State University, earning a Bachelor of Science degree. He then completed medical school at the University of Mississippi Medical Center.

Dr. Richardson completed his residency at the University Of Tennessee College of Medicine in Chattanooga where he was chief resident.

Brady returned to Attala County to begin his career. He practiced with Premier Medical group as a partner from 2004-2014.

Currently, Dr. Richardson works for Baptist Medical as their emergency department medical director at the Attala and Leake hospitals. He also works as the medical director for Sta-Home Hospice.

Dr. Richardson continues to dedicate his talents to his alma-mater. He currently serves as the vice president of the Holmes Development Foundation.



## **MAJOR GENERAL JOHN WALLACE, USAF (RETIRED)** **VETERAN OF THE YEAR**

Maj. Gen. Wallace, a Madison County native, retired with 39 years of service with the United States Air Force. In 1958, Maj. Gen. Wallace entered pilot training and graduated as an interceptor fighter pilot. During his six years of active service Maj. Gen. Wallace also served as an instructor pilot.

In 1964, when Maj. Gen. Wallace resigned from his regular commission, he joined the Mississippi Air National Guard. While with the Mississippi Air Guard, he flew reconnaissance fighters for three years and multi-engine cargo planes for 25 years.

Maj. Gen. Wallace served as assistant adjutant general for the air as well as commander of the Mississippi Air National Guard from 1985-1996, then retired as a major general.

Maj. Gen. Wallace earned an electrical engineering degree from Mississippi State University and a Master of Science from the Industrial College of the Armed Forces.

Maj. Gen. Wallace has also served his community. He was general manager of Canton Municipal Utilities for 38 years, has been involved in the Madison County Economic Development Authority, the Metro Economic Development Alliance, the Municipal Emergency Agency of Mississippi and the Chamber of Commerce.

Maj. Gen. Wallace has served on the Holmes Development Foundation Board of Directors and Board of Governors since it was founded more than 45 years ago.

# Homecoming

## OCTOBER 21 - SCHEDULE OF EVENTS



SCAN HERE FOR THE  
HOMECOMING WEBSITE  
WITH ALL THE DETAILS!  
[EVENTS.HOLMESCC.EDU](https://events.holmescc.edu)

- |  |  |
|--|--|
| <p><b>8 A.M. VISUAL ARTS SHOW</b><br/>View a display of pieces from Holmes' Visual Arts students. Also, stop by the Makerspace to create something with our high tech tools! (14)</p> <p><b>9 A.M. OTA FUN RUN</b><br/>Get your blood flowing with a one-mile fun run around the Goodman Campus. Check in front of Frank Branch Coliseum. For details contact cmon-tague@holmescc.edu. (5)</p> <p><b>9 A.M. BASEBALL INTER-SQUAD SCRIMMAGE / SOFTBALL INTER-SQUAD SCRIMMAGE</b><br/>Watch the baseball scrimmage at Charlie Donald Field and the Lady Bulldogs at the softball field. (35) &amp; (37)</p> <p><b>10 A.M. BASKETBALL INTER-SQUAD SCRIMMAGE</b><br/>Frank Branch Coliseum livens up as the basketball teams put on a show during their black vs. gray scrimmage. (5)</p> <p><b>10 A.M. CAREER &amp; TRANSFER FAIR</b><br/>Find your next step at our career and college transfer fair for all Holmes students in the Grove. (6)</p> <p><b>10 A.M. MAJOR'S TRUCK EXPO</b><br/>Come to the Chapel parking lot to check out the big trucks that Holmes' Workforce Development programs use in training. (7)</p> <p><b>10 A.M. HONOREE RECOGNITION</b><br/>Holmes honors recipients of the Distinguished Service Award, Alumni of the Year, Young Alumnus of the Year, and Veteran of the Year in McDaniel Auditorium. (15)</p> <p><b>10 A.M. HOLMES DISC GOLF TOURNAMENT</b><br/>Bring your discs! The tournament takes off with a shotgun start at Bow Wow Trail. (2)</p> <p><b>10:20 A.M. COACHMEN &amp; CONNECTION! PERFORMANCE</b><br/>Join us in McDaniel Auditorium to watch the Coachmen &amp; the Holmes Connection! - an exciting and energetic powerhouse pop ensemble that loves entertaining on stage. (15)</p> <p><b>11 A.M. FUN AND GAMES IN THE GROVE</b><br/>Fun activities in the grove for all ages! (8)</p> <p><b>11 A.M. LUNCH</b><br/>Get your fill at Carroll Cafeteria, the Lorraine Student Center, or try one of the food trucks parked in the circle in front of McDaniel Hall. Enjoy live music from 2021 Mississippi Songwriter of the Year Finalist, Lauren Lindsay and the Holmes Jazz Band. (9)</p> | <p><b>NOON CONCERT CHORALE PERFORMANCE</b><br/>The Chorale performs music from all periods and styles in the Chapel on the Hill. (25)</p> <p><b>1 P.M. TAILGATING EXPERIENCE</b><br/>Set up a tent near the practice field! Gather your class, department, or Alumni group and tailgate with us. Feel free to unload your items until 1 p.m. then loading station will be closed. (10)</p> <p><b>1:45 P.M. ANNUAL ALUMNI MEETING</b><br/>If you are an alumnus, we would love for you to join us at the Tailgate area in the Alumni Tent. (11)</p> <p><b>2 P.M. PEP RALLY AT TAILGATE AREA</b><br/>Get fired up with the cheerleaders and band on the practice field as we prepare for the big game. (12)</p> <p><b>2:30 P.M. BAND ENTERS STADIUM (22)</b></p> <p><b>2:45 P.M. - 4:00 P.M. LIVE MUSIC STARTS</b><br/>Featuring East of West on Main Stage (42)</p> <p><b>2:45 P.M. HONOREES</b><br/>Recognized on football field (22)</p> <p><b>2:55 P.M. NATIONAL ANTHEM</b><br/>Performed by the HCC Chorale (22)</p> <p><b>3 P.M. KICK-OFF!</b><br/>Help cheer the Bulldogs to victory! (22)</p> <p><b>END OF FIRST QUARTER- WOMEN'S SOCCER RECOGNIZED</b><br/>Congrats to the Lady Bulldogs for their last season accomplishments as MACCC Champs, Region 23 Champs and National Finalists! (22)</p> <p><b>HALF-TIME HOMECOMING COURT</b><br/>Presentation of Homecoming Court and the crowning of the 2021 Homecoming Queen. (22)</p> <p><b>END OF THIRD QUARTER- MEN'S BASKETBALL RECOGNIZED</b><br/>The 2020-21 Holmes Community College Men's Basketball Team will be recognized for claiming the 2021 NJCAA Region XXIII Championship, and for playing in the National NJCAA Tournament. (22)</p> <p><b>5:00 P.M. NORRIS DATES &amp; POWER SURGE</b><br/>Norris Dates and Power Surge has arrived as our main act for the 2021 Homecoming main stage and this dance and show band is HOT! Norris, along with his rhythm section, horns and front line, is full of energy that will keep you jumping as they play everything from R&amp;B, Funk, Motown, Rock, Country, Disco to today's Pop Hits. (42) (13)</p> |
|--|--|

## GET YOUR T-SHIRT!

Shirts are \$15 each and are available in the following sizes: Youth S-Youth L, and Adult S - Adult XXXXL. Please email Heather Jones at [hjones@holmescc.edu](mailto:hjones@holmescc.edu) to order. A limited number will be available in the grove and tailgate area at Homecoming. For more info go to [events.holmescc.edu](https://events.holmescc.edu).

# Homecoming WHERE IS IT?

1. Attala Hall (men)
2. Computer Tech. Bldg.
3. Science & Math Bldg.
4. Welcome Center/Guard House
5. Branch Coliseum
6. Phillips Business Bldg.
7. Montgomery Fine Arts Bldg.
8. Learning Resource Center
9. Thorne Vocational-Technical Bldg.
10. Harpole Human Resources Bldg.
11. Belk Presidential Suites
12. Holmes House
13. Baptist Student Union
14. McMorrough Library
15. McDaniel Hall
16. McClellan Administration Bldg.
17. Social Science Bldg.
18. Carroll Cafeteria
19. Motel Hall (men)
20. Volley Ball Court
21. Landscaping Dept.
22. Ras Branch Field
23. Grenada Hall (women)
24. Football Concession Stand
25. Chapel on the Hill
26. Lorance Student Center
27. Visual Arts Center
28. Choctaw Hall (women)
29. Webster Hall (men)
30. Tennis Facilities
31. Yazoo Hall (women)
32. Derrick Field House
33. Cook Hall (men)
34. Athletics Training Facility
35. Donald Field
36. Purchasing & Receiving/  
Baseball
37. Women's Softball Field
38. Softball Field House

39. Intramural/Band Field
40. President's Home
41. Walking Bridge
42. Football Practice Field
43. Basketball Courts
44. Pavilion
45. Lineman Facility
46. Maintenance Building

BOW WOW TRAIL  
**DISC GOLF TOURNAMENT**

TO WALKING TRAILS

 **PUBLIC PARKING AREA**

 **VENDOR PARKING AREA**

 **THE GROVE**

 **SERVING FOOD/TRUCKS**

 **TAILGATING AREA**

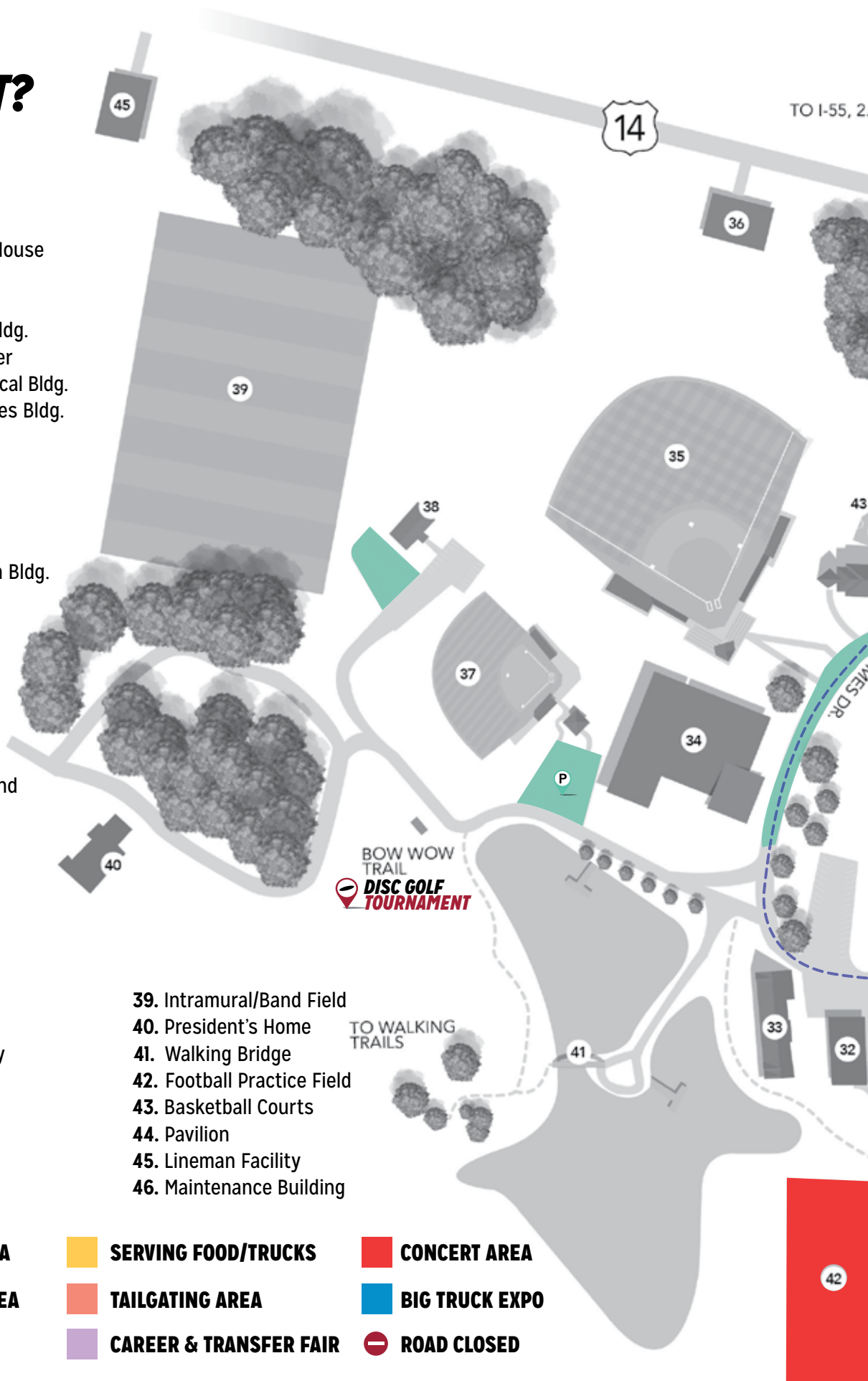
 **CAREER & TRANSFER FAIR**

 **CONCERT AREA**

 **BIG TRUCK EXPO**

 **ROAD CLOSED**

 **PTA FUN RUN ROUTE**



2.5 MILES



FRANKLIN RD.

1

46

P

BRANCH ST.



P

2

P

3

P

4

P

9

P



PINE ST.



BULLDOG CIR.

10

11

HILL ST.

13

12

HICKORY ST.

20

19

17

18

CHURCH ST.



P

5

27

30

P

P

26

7

8

15

14

25

44

24

23

16

22

DOGS

5900





# HOLMES COMMUNITY COLLEGE

Goodman / Ridgeland / Grenada  
P.O. BOX 527, Goodman, MS 39079

**Stay in touch!** Helping you stay connected to Holmes Community College and to each other is what the HCC Alumni Association is all about. To update your information, contact Katherine Ellard at [kellard@holmescc.edu](mailto:kellard@holmescc.edu) or 662-472-9134.

**Share your photos on social media with the hashtag:**

**#NoPlaceLikeHolmes** 🐾 📷 📺

**Connect with HCC Alumni on social media**

**@HolmesCCAlumni**

**Join the Holmes online Community!**

**[holmesccalumni.360alumni.com](http://holmesccalumni.360alumni.com)**



## ALUMNI PRESIDENT'S MESSAGE

The Holmes Community College Alumni Association is a dynamic organization committed to engaging alumni/ae for life. The Alumni Association's role is to support and enhance the connections that alumni developed both with their peers and with the College itself.

The Alumni Association organizes a range of events and activities over the course of the year. These events

take place online, on our campuses and across the district. Wherever you are in your life and career, the HCC Alumni Association is dedicated to strengthening your ties to Holmes and your fellow alumni.

I am honored to serve as your 2021 president of the Holmes Community College Alumni Association's Board of Directors. There is no denying that we have operated over the last year under unusual circumstances due to the pandemic, but I am excited for this opportunity to serve you.

### AMONG OUR GOALS ARE TO:

- Increase attendance at alumni events and class reunions.
- Support the Alumni Affairs office to increase alumni participation.
- Cultivate continued interest in Holmes CC among young alumni.
- Acknowledge and celebrate the accomplishments of our alumni.

Go Bulldogs!

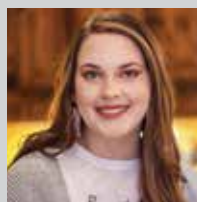
Derek Starling Sr. '86

President, Holmes Community College Alumni Association

## YOUR BUSINESS COULD BE FEATURED HERE!



Yazoo Honey & Bee Farm owner **Kip Isonhood** of Tinsley has made a big impact in the beekeeping community. Watch the video at Holmes' Alumni360 community.



**Stephanie Dufresne** once made 12 dozen cookies for first responders at Christmas. The Magnolia Sweets business blossomed from there and has since been creating edible pieces of art for all occasions.

**REGISTER YOUR BUSINESS AT**  
**[HOLMESCCALUMNI.360ALUMNI.COM/SPONSORS](http://HOLMESCCALUMNI.360ALUMNI.COM/SPONSORS)**