



Holmes Community College

Development Foundation

2018 Annual Report



Jackie Turner,
*A Legacy Built
at Holmes*



ON THE COVER:

Jackie Turner, Holmes Community College alumna, was appointed by Gov. Phil Bryant as the Executive Director of Mississippi Department of Employment.

[Read the full story, pages 8-9](#)



CONTENTS

Departments

| | |
|--|------------|
| <i>Foundation President</i> | 2 |
| <i>HCC President</i> | 3 |
| <i>Board of Directors & Board of Governors</i> | 4 |
| <i>Alumni Officers & Executive Committee</i> | 5 |
| <i>Description of Foundation</i> | 5 |
| <i>Features</i> | 6-11 |
| <i>Annual Giving Donors</i> | 12-13 |
| <i>Legacy Club 2018</i> | 13 |
| <i>2018 Scholarship Recipients</i> | 14-20 |
| <i>Shelton Scholarship Award</i> | 21 |
| <i>Established Scholarships 2018</i> | 22 |
| <i>Bequests and Trusts</i> | 22 |
| <i>Memorials and Honorariums</i> | 23 |
| <i>Mini-grants</i> | 24 |
| <i>Foundation Happenings</i> | 25 |
| <i>Retirees</i> | 26 |
| <i>Foundation Classic Golf Tournament</i> | 27 |
| <i>Spotlight on Holmes</i> | 28-29 |
| <i>Upcoming events</i> | Back Cover |



A MUSICAL LEGACY 6

Holmes alumna Dixie Branch ('65) was honored with a plaque to recognize her contributions to Holmes Community College.

FILLING NEEDS IN THE COMMUNITY 7

Attala County resident, Dr. Edward Earl Bryant, ('64) shows dedicated medical service to his community for over fifty years.

A LIFETIME OF SERVICE 7

HCC Development Foundation Board of Directors adopted a resolution recognizing and honoring the life and legacy of Burnis Gardner (1926-2018) of Brandon.

A LEGACY BUILT AT HOLMES 8-9

Jackie Turner, Holmes Community College alumna, was appointed by Gov. Phil Bryant as the Executive Director of Mississippi Department of Employment.

A HOLMES ENTREPRENEUR 10-11

Don Wynne is passionate about everything he does and sits down to tell his story about giving back.

From the Foundation President



Dear Friends of our beloved Holmes,

Thanks to you, 2018 was a wonderful year. The Holmes Community College Development Foundation continues to provide students, administration, faculty and staff with opportunities to help them succeed. Thank you for your loyal support which makes it possible for Holmes to continue its time-honored tradition of providing a quality education.

As you make your way through this foundation report, you will get a glimpse of why there really is "No Place like Holmes." The Foundation was able to provide numerous scholarships, help beautify each campus, aid in physical improvements to the college and purchase state-of-the-art equipment and new technology. Our faculty are able to do exponentially more in the classrooms and online with each passing year, and all of our staff and students are able to enjoy continually-updated, comfortable facilities because of you.

In 2018, we set up a partnership with Ingalls Shipbuilding to offer new training, updated the Frank Branch Coliseum, added beautiful directory signs around each campus, added a walking track in Grenada, updated the fitness center in Goodman, completed the exterior/signage for the fitness center in Ridgeland and added new eLearning/traditional classroom technology, among other updates. Our mission is to provide a standard of excellence for all the college's stakeholders and your contributions help us reach those goals.

The Holmes Foundation relies on your generous gifts for the continued success of our college and the students we are so proud to serve. Please continue your support for Holmes Community College by making your contributions for 2019. It is greatly appreciated and truly helps impact the lives of so many.

Sincerely,

A handwritten signature in black ink, appearing to read "Johnny Belk", followed by a long horizontal line extending to the right.

Johnny "Bit" Belk, President
Holmes Community College Development Foundation

From the College President



Dear Friends of our beloved Holmes,

2018 was a year marked by growth for Holmes Community College, and the financial investments from our Foundation played a huge role in that. The Foundation does a remarkable job raising and allocating funds to assist our students, better our institution and solidify that there really is "No Place like Holmes."

Some may not think a scholarship worth a few hundred dollars means much, but sometimes that scholarship is the one factor that allows a student to finish their degree or even start their college career to begin with.

The supporters of our beloved college are an integral part of the Holmes family and without them, the numerous updates, renovations, technology additions and new partnerships would not be possible. Our students, faculty, staff, coaches and administrators continue to shine in the classroom, on the field, in the office, on the court and out in the community; they deserve to shine in these beautifully-renovated buildings, fields, courts and campuses as a whole.

I'm proud of all our Bulldogs, past and present, and excited to watch as Holmes continues to grow. I humbly thank you for your much-appreciated support of the Holmes Community College Development Foundation; even more so as support at the state level has continued to decrease. Thank you for loving this institution as much as I do. There really is "No Place like Holmes."

Sincerely,

A handwritten signature in black ink that reads "Jim Haffey". The signature is fluid and cursive, with a long horizontal stroke extending from the end.

Dr. Jim Haffey, President
Holmes Community College

Development Foundation



Development Foundation Board of Directors

Board of Directors

Elected Members

Johnny Belk (P)
Jesse Leverette (VP)
Doris Belk (S)
Wirt Hayes (T)
Eugenia Collins
W. C. Shoemaker
Tom Butchart
Wilton Neal
John Wallace
Donald Milner
Dr. Lynn Wright
Jack Holmes
Joe Adams
Dr. Brady Richardson
Ben Tharp
Maurice Ferguson
David McCulloch
Trey Bowman

Ex-Officio Members

Dr. Jim Haffey
Walter Alford
Dr. Lindy McCain
Gene Richardson
Sonny Sparks
Dr. Don Burnham
Dr. Michelle Burney
Katherine Ellard
Diane Harman

Board of Governors

Attala County

W. C. Shoemaker
Johnny Belk
Dr. Brady Richardson
Frank Shaw, Jr.
Carolyn Thomas
Doris Belk
Jack Holmes

Carroll County

Wilton Neal

Choctaw County

Ben Tharp
David McCulloch
William Strawbridge
Trey Bowman

Grenada County

Holmes County

Dale McBride
Wirt Hayes
Lynn & Elton Wright

Madison County

John Wallace
Betty Sue & Joe Adams
Tom Butchart
Becky & Jesse Leverette

Montgomery County

Margaret Harris
Eugenia Collins
Maurice Ferguson

Webster County

Hugh Gibson
Martha & Fred Ray

Yazoo County

Jim Golden

Out of District

Donald Milner
Warren County

Burnis & Clytice R. Gardner
Rankin County

Dr. Sam Massey
Rankin County

Jack McDaniel
Hinds County

Dr. J.L. Peoples
Oktibbeha County

Foundation Employees

Dr. Lindy McCain

*Vice-President for
Institutional Research
& Student Affairs*
lmccain@holmescc.edu

Diane Harman

Assistant Secretary/Treasurer
662-472-9017
dharman@holmescc.edu

Wirt Hayes

Treasurer
662-472-9017
whayes@holmescc.edu

Sonny Sparks

Executive Vice-President
ssparks@holmescc.edu

Katherine H. Ellard

*Director of
Alumni Affairs*
662-472-9134
kellard@holmescc.edu



Development Foundation Board of Governors

Alumni Association Executive Committee

Johnny “Bit” Belk

President of the
Development Foundation

Doris Belk

Secretary of the
Development Foundation

Wirt Hayes

Treasurer of the
Development Foundation

Dr. Jim Haffey

President, Holmes
Community College

Dr. Lindy McCain

Executive Director of the
Development Foundation

Dr. Don Burnham

Vice President,
Ridgeland Campus

Dr. Michelle Burney

Vice President,
Grenada Center

Andy Wood

Director of Goodman
Campus/Athletic Director

Alumni Association Officers

Gene Richardson

President

James Young

Vice President

Kay Asken

Secretary

Hilliary O'Briant

Treasurer

Wilton Neal

Past President

ABOUT THE FOUNDATION

Holmes Community College Development Foundation was established more than 40 years ago to represent the nine-county district the college serves. Its purpose is to provide funds for scholarships for students attending Holmes as well as provide funds to support other educational activities of the college, such as faculty development, modernization of classroom equipment, student development activities & sponsorship of capital improvement campaigns.

Since its inception, it has conducted campaigns for furnishing the old president's home to be used as a bed & breakfast & other alumni meetings. In addition to furnishing the house, it raised funds for the construction of a courtyard to be used for receptions & the paving of a supporting parking area.

The Foundation conducted the Lighting the Way Campaign in which \$1.5 million was raised to support college programs. The Foundation also raised funds amounting to \$750,000 for the building of the Chapel on the Hill which serves as the centerpiece for the campus & is used for recitals, weddings & other religious activities.

In 2016, the Foundation completed a Capital Campaign exceeding \$15 million. The mission of this campaign was to obtain support for student scholarships, instructional technology, program start up, etc.

The Foundation is governed by a 18-member Board of Directors, who annually elect officers from its membership. In addition to the Board of Directors, there is a Foundation Board of Governors with representation from the nine counties served by the college.

Holmes Lauds Alumna Dixie Branch for Support of Music Program



Holmes alumna Dixie Branch ('65) was honored with a plaque to recognize her contributions to Holmes Community College's music program during the 2018 Pops Concert on April 24.

A native of Pickens, she attended Holmes Agricultural High School and played piano for the college choir all four years before she became a student at

Holmes Junior College in 1963. While at HJC, she continued to share her talents as a pianist, serving as an accompanist for the choir and playing at other campus events as needed.

Dixie's duties increased unexpectedly her freshman year when the choir director, Martha Tye McKie, suffered a heart attack. She had known Mrs. McKie most of her life and had even tak-

en piano lessons from her since the third grade, so she happily accepted the invitation to fill in as director for the time being. Although just a student herself, she successfully led the choir on their spring tour that year.

Dixie was also asked to share her talents at other important campus events, including honor society inductions and commencement ceremonies. In fact, she even played the piano for her own graduation ceremony in 1965. Her future father-in-law, then Holmes President Frank Branch, personally brought her diploma to her at the piano bench.

Upon graduation, she continued her studies at Delta State University, earning a bachelor's degree in music education. After teaching elementary music for seven years, she began assisting her husband, Frank Branch Jr., with the animal clinic they opened in Cleveland.

Dixie's love of music never ceased, though, and she continued teaching periodically throughout the years, filling in when a school needed her. She also played, and continues to play, throughout the community. One of Dixie's favorite groups to accompany was the Singing Christmas Tree from First Baptist Church, where she worked with junior high and high school girls.

She has also provide accompaniment for a number of musicals at a local theater in Cleveland and plays for churches all around the community.

Just as she has held on to her love of music, Dixie and Frank have continued to show love and support for their alma mater, as well. After losing their son, Ben, in a tragic car accident in 2002, they established the Ben Branch Memorial Scholarship at Holmes. They have also come back to support Holmes during various events over the years, especially when Frank's parents were alive and residing on campus in what is now the Holmes House.

Holmes played an important role in both Mr. and Mrs. Branch's lives and Dixie specifically left her mark on the music program at Holmes. 🐾

Dr. Edward Earl Bryant Fills Needs in His Community



Attala County resident Dr. Edward Earl Bryant, a graduate of Kosciusko High School, was the valedictorian of his 1964 graduating class at Holmes. He also served as president of

the Baptist Student Union and Phi Theta Kappa during his sophomore year. Dr. Bryant received his bachelor's degree from Ole Miss, a Master of Science in Physiology from LSU and holds a Ph.D. in anatomy as well as an M.D. from the University of Mississippi School of Medicine.

Before beginning his medical practice in Kosciusko, Dr. Bryant, a lieutenant colonel in the Medical CORPS of the United States Air Force, served as family medicine staff, residency director and department chief at Carswell Air Force Base.

In 1983, he returned to Kosciusko where he became a founding physician of the Family Medicine Clinic and began serving as an emergency staff physician at Montfort Jones Memorial Hospital which is now Baptist Attala. During his years of medical practice in Kosciusko, Dr. Bryant has been a family medicine physician at Methodist Medical Clinic of Central Mississippi and Baptist Medical Clinic. He was also the former owner of Trace Medical Clinic, a private practice of general medicine and urgent care, now part of the Premier Medical Group.

Dr. Bryant was awarded Best Physician in Kosciusko in 2008 and 2010. He has also served as the Physician Advisor for the Camp of the Rising Son at French Camp Academy since 1983. Dr. Bryant is a member of the Kosciusko-Attala Chamber of Commerce and the Industrial Development Cooperation and is an active member and deacon of First Baptist Church of Kosciusko. He was a member of the steering committee for the Holmes Community College Capital Campaign and is currently a member of the Legacy Club. In 2013, Holmes recognized Dr. Bryant as alumnus of the Year. 🐾

Gardner Recognized with Resolution



On October 16, 2018 the Holmes Community College Development Foundation Board of Directors adopted a resolution recognizing and honoring the life and legacy of Burnis Gardner (1926-2018) of Brandon. The resolution was presented to his wife of 67 years, Clytice Robertson Gardner.

Mr. Gardner was an alumnus of Holmes Community College (1950), served as a Marine, and as an educator for 30 years in the Jackson Public Schools. He and Mrs. Gardner are avid supporters of Holmes. They both have served as members of the Legacy Club, members of the Foundation Board of Governors, and have established an endowed scholarship in their name. In 2016, Mr. Gardner was the recipient of the World War II Veteran's Award given annually at Homecoming. 🐾



Top: Dr. Lindy McCain, Vice-President for Institutional Research & Student Affairs; Johnny "Bit" Belk President of the Development Foundation, and Dr. Jim Haffey, President of Holmes Community College, present a resolution to Clytice Robertson Gardner on behalf of her late husband, Burnis Gardner.





On the
COVER

A LEGACY

Built at Holmes

Jackie Turner, a Holmes Community College alumna, is part of a really special story that connects three generations to the Goodman Campus. Turner's memories of Holmes started as a young girl growing up in Sallis.

Her father, Jack Ables, attended Holmes Jr. College in the '60s and currently serves as the mayor of Sallis. Growing up just down the road from Holmes the Ables family attended sporting events on the Goodman Campus.

Holmes was a natural move for Turner after graduating high school from East Holmes.

"There was no question, I was going to Holmes," Turner said. "I loved Holmes Community College. It was a good transition from a small educational environment to a four-year institution."

While Turner attended Holmes, she was a cheerleader, inducted into the Hall of Fame, a Beauty and remembers staying in Yazoo Dorm. She has fond memories of Phi Beta Lambda which pushed her to excel. Turner has a data processing and accounting degree from Holmes.

Turner explained that Holmes gave her the foundation and leadership skills that prepared her for her career.

Following Holmes, she earned a bachelor's degree in professional accountancy from Mississippi State University.

Turner has worked for the Mississippi Department of Audit and Employment Security. She managed the business department at Employment Security from 1998 to 2004, then worked as a comptroller until 2008. She directed the agency's comptroller's office from 2008 to 2013 and served as the agency's deputy executive director from 2013-2019. Most recently, she was appointed by Gov. Phil Bryant as the Executive Director of Mississippi Department of Employment Security to the lead the agency. Turner said she is grateful to Gov. Bryant for the opportunity.

Turner is married to Tim Turner and they have three children: Griffin, Shelby and Lindsey. They are all following in her successful footsteps. Griffin and Shelby both attended Holmes and continued on to Mississippi State. Griffin is majoring in computer engineering and Shelby in pre-dentistry. Both were very involved on campus during their time at Holmes. Lindsey is also looking to attend Holmes in a few years when she completes high school. The Turner family lives in Sallis and attends Sallis Baptist Church. 🐾



HOLMES ALUMNUS DOESN'T JUST SEIZE OPPORTUNITY HE **RUNS** WITH IT.

Don Wynne, son of Oscar and Frances Wynne, grew up in Lexington working for his mom at their family restaurant as one of his family duties. In what little spare time he had he was shooting basketball in the gym while the other kids went home to watch "Combat."

Wynne finished at Lexington High School at 6 feet 3 inches tall and 175 pounds. He found himself with a basketball scholarship to Holmes Community College where he was one of the starting five. While at Holmes, he played for two coaches: Mel Gibson and Bob Garrison.

"Garrison was tough, but a good mentor and I wish I would have had someone like him earlier in life," Wynne said.

Some of the players Wynne played with were Jody Car, Robert Rose, Tracey Burrows, Tommy Foster, Bubba Lehmen, Clifford Trammell, Steve Trammell and Ronnie Armstrong.

"I loved Holmes," Wynne said. "I remember a lot of the teachers but most of all Mrs. Boswick who taught speech. I had speech after lunch and no one would ever pay attention. It was my day to give my speech and I started my speech by slamming a book closed to get the attention of my audience. Mrs. Boswick gave me an "A" and never forgot me. Life on campus was great; everyone got everybody with lots of jokes and pranks."

After earning an associate degree from Holmes in business, Wynne attended Mississippi State University where he earned a general business degree with a minor in accounting. He met his wife Beth while in Starkville on a blind date as she was attending Mississippi State College for Women in Columbus.

Upon graduation, Wynne worked for Burroughs Corporation as a computer salesman for 12 years and

worked for Digital Equipment Corporation for eight years. He was able to fully retire with both companies.

Seeing opportunities when they arrived was something Wynne took advantage of so he formed a bank data services company called Financial Systems, Inc., to process 28 banks and branches information. He was able to sell it to First Financial Management Corporation of Atlanta, Georgia. They were the largest bank data processor in the southeast United States. Wynne continued on in the computer business by starting a microcomputer company to sell and assemble micros and it was named Generic Computers, Inc.

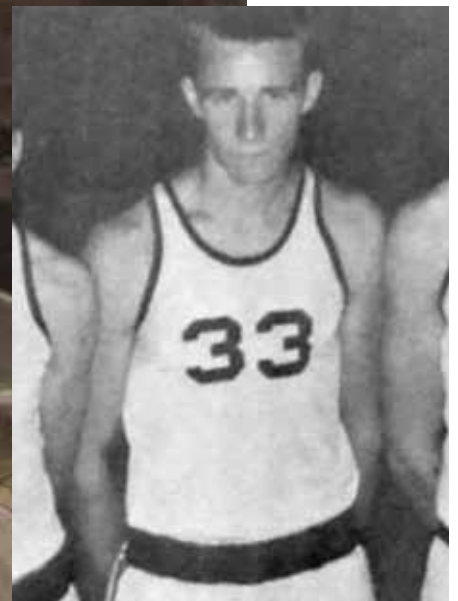
In the midst of starting and running companies, Wynne followed a passion he knew well: the restaurant business. First, he bought Phil's Place with two partners in 1983. Phil's Place was a New Orleans style po'boy restaurant and they had three locations in the Jackson area. Then, he opened Bo Don's Catfish and Seafood in 1988 which he sold in 1997. Next, he acquired Sonny's Real Pit Bar-B-Q in 1985 and built a Sonny's in Brandon in 1997 which was just renovated in 2017. Wynne opened the first Sonny's Express in the chain on Capitol Street in Jackson and sold the Sonny's Jackson location to a restaurant chain named the Cookout, but still owns the Sonny's in Brandon today.

Wynne and his wife, Beth, have one son and two grandchildren. They spend most of their time at their hunting lodge in Holmes County and can be found at a Holmes basketball game quite often. Among some of Wynne's biggest accomplishments he is most proud of being able to help youth and young adults. Wynne has hosted disabled children at his hunting lodge on numerous occasions for hunts and continues to be very actively involved with the Holmes athletics.

"I am very proud of the kids I am involved with today," said Wynne. 🐾



"It was my day to give my speech and I started my speech by slamming a book closed to get the attention of my audience. Mrs. Boskwick gave me an "A" and never forgot me."



Giving & Donors

Annual Giving Donors

Bulldog Club

\$100,000- \$249,999

Grand Benefactor

\$50,000 - \$99,999

Foundation for the
Mid South, Inc.

Benefactor

\$25,000 - \$49,000

Platinum Level

\$10,000 - \$24,999

Advanced Distributor Products
Anonymous Donor
Dixie & Frank Branch
Karan & Eric Clark
Renasant Bank
McCrea & Paul Shelton
Jan & Chuck Putnam

Gold Level

\$5,000- \$9,999

Anonymous Donor
Blue Sky RE, LLC
Elizabeth & Johnny Belk
Clytice Gardner
Dr. & Mrs. Jim Haffey
Dr. Don Phillips Estate

Silver Level

\$2,500- \$4,999

Community Bank
Maggie Garrett
Holmes Occupational Therapy
Assistant Students
Christy & David Hudson
Mr. & Mrs. Greg LeVert
Jamie & Sam Massey
MS Auto Manufactures Assoc.

Julie & Gerry Taylor
Mr. & Mrs. Don Wynne
PatientCare Logistics Solutions

Patron

\$1,000- \$2,499

Betty Sue & Joe Adams
Mr. & Mrs. James Alford
Anonymous Donor
Gail & Ryan Beggs
Doris H. Belk
Johanne & Edward Bryant
Central MS Office Supply, Inc.
Reta & Danny Chandler
Mr. & Mrs. Lyle Corey, Jr.
Margaret M. Davis
Anne Elozory
Grenada Rotary Club
Hankins Lumber Company, Inc.
Donna & Dub Herring, Jr.
Jack Holmes
Howard Industries, Inc.
Mr. & Mrs. William D. Fowler
Margaret Keeton
Ann & Dynamite Kirk
Becky & Jesse Leverette
Jan & Dale McBride
Lily Fran McCrory
Hazel & Don Milner
MS Organization for Associate
Degree Nursing
Peggy & Wilton Neal
Pafford Emergency Medical
Services
Genie Kay & Robert Rose
Debbie & Frank Shaw, Jr.
Special Practical Nurses
Organization- Ridgeland
Carolyn Thomas

Friend

\$500- \$999

Lynn Boykin
Stephen Brown
Dr. Don Burnham
Dr. Fran Cox
Mr. & Mrs. Charles England
Mr. & Mrs. Al Flanigan
Hunter Engineering
Dr. Jenny Jones
Ben Lewis
Maxine Magee
Bronwyn Martin
Mary L. Martin
S&S Recovery, Inc.
Mr. & Mrs. Harold D. Stokes
The Computer Guys, LLC
Mr. & Mrs. James Whittemore
Dr. Mack Woo
Mr. & Mrs. James Young
City of Ridgeland

Supporter

\$1- \$499

Cynthia Abel
Lisa Anglin
Dr. Alice Austin
Caroline Barton
Amber Bell
Dr. Jacqueline Bell
Christi Blair
Angela Boyd
Cindy Bridges
Julia Brown
Ashley Broyles
Joey Brunson
Dr. Michelle Burney
Dr. & Mrs. Howard Butler
Richard Casey
Wanda Casey

John Cheatham
Sherrie Cheek
Cole Mitchell, LLC
Tammy Collins
Matthew Convertino
Stacey Coulter
Kristin Daniels
Delta Glass & Doors
Faye Dillard
Darleen Dozier
Cynthia Dugan
Mr. & Mrs. Alton Dunaway
Norman Faulkner
Gwendolyn Graham
Grenada Garden Club
Grenada Higher Education
Association
Grenada Paper Company
Jimmie Hall
Terrell Hammett
Theresa Hargett
Debbie Harville
Dr. Myra Harville
Mr. & Mrs. Wirt Hayes
Tracy Herring
Dr. LaWanda Herron
Jackson Web Works
Mr. & Mrs. Michael Jacobs
Mr. & Mrs. William F. Jenkins
Mr. & Mrs. Jeff Jeter
Mr. & Mrs. Bill Johnson
Earl Johnson
Jo E. Johnson
NaTunya Johnson
Rhonda Johnson
Sarah Kimbrough-Hart
Foundation
Amy Land
Dr. Tonya Lawrence
Suzanne Lawshe

Legacy Club

LaShonda Levy
 Veronica B. Luckett
 Amber Mabus
 Dr. Lindy McCain
 Mr. & Mrs. W.A. McCool
 Cynthia McCoy
 Laura McMahon
 Middle South Computer
 Heather Mooney
 Ethel Moore
 Linda Nichols
 Kathy Nipper
 Frances Nix
 Santosh Parakkal
 Diann Parker
 Nancy Parkerson
 Michael Pawlik
 Jennie Pegg
 Mr. & Mrs. George Pilgrim
 Mr. & Mrs. Fred Ray
 Mr. & Mrs. Davis A. Richards
 Rosemary Self
 Jennifer Smith
 Mr. & Mrs. Jimmy Solomon
 Sonny Sparks
 Patricia Stewart
 Matthew Surrell
 Chanda Sykes
 Mr. & Mrs. Andrew Townes, Jr.
 Trustmark Bank
 Xiaoying Wang
 Matthew Wannebo
 Larry Webster
 Mallory Weeks
 Albert B. White
 Joe David White
 Dr. Amy Whittington
 Andrew Wood
 Heather Wood
 Lynn & Elton Wright



Legacy Club members pledge a minimum of \$1,500 annually. These gifts help bridge the gap between Holmes' essential needs & available funding. Private support makes the difference between a budget that provides a minimal level of support for teaching & faculty development & a budget that means an enhanced educational experience which goes beyond the ordinary.

Betty Sue & Joe Adams
 Advanced Distribution Products
 Mr. & Mrs. James Alford
 Anonymous Donors (3)
 Doris H. Belk
 Elizabeth & Johnny Belk
 Blue Sky RE LLC
 Dixie & Frank Branch
 Johanne & Edward Bryant
 Karan & Eric Clark
 Community Bank
 Mr. & Mrs. Lyle Corey, Jr.
 Margaret Davis
 Anne Elozory
 Foundation for the Mid South, Inc.
 Mr. & Mrs. William Fowler
 Clytice Gardner
 Maggie Garrett
 Grenada Rotary Club
 Rae Anne & Jim Haffey
 Hankins Lumber Company, Inc.

Donna & Dub Herring, Jr.
 Jack Holmes
 Howard Industries, Inc.
 Christy & David Hudson
 Margaret Keeton
 Ann & Dynamite Kirk
 Becky & Jesse Leverette
 Mr. & Mrs. Greg LeVert
 Jamie & Sam Massey
 Mississippi Auto Manufacturers Assoc.
 Peggy & Wilton Neal
 Hazel & Don Milner
 Occupational Therapy Assistant Students
 Jan & Chuck Putnam
 Renasant Bank
 Genie Kay & Robert Rose
 Debbie & Frank Shaw
 McCrea & Paul Shelton
 Julie & Gerry Taylor
 Carolyn Thomas
 Mr. & Mrs. Don A. Wynne

Scholarship Recipients



Madison Adcock

*Anonymous Scholarship
The McCrory Holmes Milestone
Scholarship*



Julie Bain

*Lottie Ruth Vint, R.N. &
William A. Vint, M.D. Scholarship*



Dylan Baker

Anonymous Scholarship



Hope Barker

Grenada Rotary Club Scholarship



Channing Blair

Anonymous Scholarship



Hannah Bloom

*Renasant Bank Completion
Scholarship*



Daranikka Brown

*Renasant Bank Completion
Scholarship*



Schyler Broyles

Anonymous Scholarship



Logan Burchfield

*TIC (The Industrial Company) Welding
Scholarship*



Bret Burnley

*Ronald "Ronnie" K. Thomas Memorial
Scholarship*



Mary Burrell

Anonymous Scholarship



Jimmy Burse

*William Brian Risher Memorial
Scholarship*



Kaylie Cagle

*Renasant Bank Completion
Scholarship*



Nathan Cagle

Anonymous Scholarship

Scholarship Recipients



Sara Carpenter
Anonymous Scholarship



Lauren Devine
Anonymous Scholarship



James Chandler
Charles Holder Scholarship



Kirsten Dickard
James M. Robertson Memorial Scholarship



Casey Cloninger
Anonymous Scholarship



Tyler Diffey
Providence Cooperative Farm Scholarship



Allyssa Cook
F.C. & Annie P. Dailey Memorial Scholarship



Kailey Dorris
Frank B. Branch Memorial Scholarship



Macie Craddock
Renasant Bank Completion Scholarship



Kadero Edley
James M. Robertson Memorial Scholarship



Sarah Dantone
Providence Cooperative Farm Scholarship



John Ellingburg
Renasant Bank Completion Scholarship



Dendy Davenport
Anonymous Scholarship



Jon William Garrett
TIC (The Industrial Company) Welding Scholarship

Scholarship Recipients



Britton Grace

Anonymous Scholarship



Camden Graham

Cooper-Oguz PTA Scholarship



Tanner Grantham

Advance Distributor Products (ADP) Scholarship



Michael Gray

Mississippi Automotive Manufacturing Association Scholarship



Paul Green

Dr. L.C. Henson Scholarship



Keondra Hamilton

Advance Distributor Products (ADP) Scholarship



Taylor Hansen

Patricia Liles Memorial Scholarship



Daniel Harris

Renasant Bank Completion Scholarship



Michael Harris

Advance Distributor Products (ADP) Scholarship



Reggie Hayes

1950 HJC Championship Football Team Athletic Scholarship



Alexa Hayward

Renasant Bank Completion Scholarship



Charles Herring

Grenada Rotary Club Scholarship



Joshua Hinkle

Renasant Bank Completion Scholarship



Abby Holmes

Belk Family Scholarship

Scholarship Recipients



Shelby Hoover

*James M. Robertson Memorial
Scholarship*



Cori Hopson

*Providence Cooperative Farm
Scholarship*



Amy House

BellSouth Endowed Scholarship



Morgan Huffman

Carl Johnson Memorial Scholarship



Cassie Ingram

*Burnis & Clytice Robertson Gardner
Scholarship*



Mackenzie Jones

Kay Hodges Scholarship



Elizabeth Joseph

*James M. Robertson Memorial
Scholarship*



Garret Kelley

Anonymous Scholarship



Lindsey Kirkland

Paul & McCrea Shelton Scholarship



Devin Livingston

*James M. Robertson Memorial
Scholarship*



Elissa Long

*Lottie Ruth Vint, R.N. & William A. Vint,
M.D. Scholarship*



Justin Lott

Bain Corey Scholarship



Charles Lowe

*Burnis & Clytice Robertson Gardner
Scholarship*



Victoria Luke

*James M. Robertson Memorial
Scholarship*

Scholarship Recipients



Gracie MacGown

John C. Downey Scholarship



Madysen Martin

F.C. & Annie P. Dailey Memorial Scholarship



Adam McDonal

Ben Branch Memorial Scholarship



John Miksa

Eli P. Garrett Scholarship



Rebekah Misner

Renasant Bank Completion Scholarship



Emily Mitchell

Renasant Bank Completion Scholarship



Hayden Mitchell

Paul & McCreia Shelton Scholarship



Wilsonya Mitchell

Renasant Bank Completion Scholarship



Emily Moore

Anonymous Scholarship



Logan Neal

Providence Cooperative Farm Scholarship



Kerri Neely

Anonymous Scholarship



Nicholas Neely

James M. Robertson Memorial Scholarship



Paris Nichols

Providence Cooperative Farm Scholarship



Savannah Nobles

Advance Distributor Products (ADP) Scholarship

Scholarship Recipients



Laura Partain
*Renasant Bank Completion
Scholarship*



Chellsee Perry
*Lottie Ruth Vint, R.N. & William A. Vint,
M.D. Scholarship*



Kendall Preston
*F.C. & Annie P. Dailey Memorial
Scholarship*



Layla P. Pritchard
*Burnis & Clytice Robertson Gardner
Scholarship*



Kayla Ramage
Anonymous Scholarship



Briana Reed
Bain Corey Scholarship



Alma Rodriguez
*James M. Robertson Memorial
Scholarship*



Bruce Ruschewski
Anonymous Scholarship



Dace Ruthven
*Renasant Bank Completion
Scholarship*



Vivian Shipp
*Millennial Teaching Fellowship
Scholarship*



Ashton Shuffield
*Lottie Ruth Vint, R.N. & William A. Vint,
M.D. Scholarship*



Cassidy Sizemore
*McCrary Holmes Milestone
Scholarship*



Tyler Sloan
*Gibson Family Scholarship
Renasant Bank Completion
Scholarship*



Drayton Spell
*Hunter Engineering Welding
Scholarship*

Scholarship Recipients



Nykesha Stewart

*Advance Distributor Products (ADP)
Scholarship*



Rylee Stone

Anonymous Scholarship



James Swinney

*Burnis & Clytice Robertson Gardner
Scholarship*



Brandon Thomas

Grenada Rotary Club Scholarship



Ashley Trehern

The Class of 1963 Scholarship



Brooks Turner

*James M. Robertson Memorial
Scholarship*



Hannah Vaughan

The Trustees Scholarship Fund



Albertina Veasley

*Renasant Bank Completion
Scholarship*



Allie Watkins

Anonymous Scholarship



Lauren Wells

Anonymous Scholarship



Ameer West

*James M. Robertson Memorial
Scholarship*



Hallie Westbrook

*Renasant Bank Completion
Scholarship*



Miesha Woods

*Lottie Ruth Vint, R.N. & William A. Vint,
M.D. Scholarship*



Tonya Wooten

Renasant Bank Completion Scholarship



Kaelin Wright

*Renasant Bank Completion
Scholarship*



Paige Wynne

Bill Bunch Memorial Scholarship

Heather Jones - 2018 Shelton Award Recipient

Chemistry instructor and cheerleading sponsor Heather Jones of Yazoo County received The Paul and McCrea Shelton Scholarship to honor her hard work and dedication to Holmes Community College. A Holmes alumna, Jones has worked for the college for over 10 years and has always been extremely active on campus.

“This award is well deserved,” said biological science/chemistry instructor Mary Leigh Poole. “Heather brings a diverse set of skills in the classroom and attends nearly every event on campus. I appreciate how she also supports other departments in their endeavors. Beyond teaching chemistry, she teaches her students and the cheerleaders she coaches about responsibility, making good decisions, time management and personal behavior.”

Jones holds a Bachelor of Science in Biochemistry as well as a Master of Science in

Natural Science from Delta State University. As an instructor, Jones assists with professional school seminars and mock interviews, serves as an advisor for Holmes Plus and takes part in collecting, tabulating and reporting IE data. She is also an academic advisor for students majoring in pre-dental, pre-medicine and pre-pharmacy.

As a cheerleading coach, Jones is responsible for over 20 students during practices, performances, competitions and campus events. Jones organizes and oversees the numerous fundraising activities

the cheerleaders take part in, including reading to elementary schools, walking in parades, performing at local schools and visiting Blair E. Batson Children’s Hospital, to name a few. In addition, she is part of the committees for Homecoming, Sports Hall of Fame, and Convocation.

Outside of Holmes, Jones stays busy volunteering at Parkview Church of God, where she is a children’s department volunteer, drama director and a member of the Advisory Council. She serves as president of the Junior Auxiliary of Yazoo City, as well,

and as a volunteer with the Boys and Girls Club. Jones and her husband, Matt, have two children: Pierce, 8, and Jon Wiley, 6. In addition to her various extracurricular activities and community involvement, she volunteers at her children’s school and serves as volunteer baseball scheduling commissioner.

“We are so thrilled to give this scholarship to such a deserving and dedicated member of the Holmes family,” said Vice President for Institutional Research and Student Affairs Dr. Lindy McCain. “Heather is a major asset to the college and the Holmes Development Foundation appreciates how she invests in our students.” 🍁



The Paul and McCrea Shelton Scholarship

Paul and McCrea Shelton are long-time supporters of the college. They established the scholarship to be awarded to both employees and students. Two \$300 scholarships are awarded each fall and spring semester to students; one student on the Ridgeland Campus and one on the Goodman Campus. Employees are nominated by Holmes faculty/staff members based on their support of the college, dedication to students and community service involvement.

Established Scholarships 2018



Lennie Barnett Branch Memorial Scholarship

This endowment was established by alumni Dixie and Frankin Branch in memory of his mother, Lennie Branch. Mrs. Branch taught English, Spanish, and French; later serving as registrar for 30 years. She was the wife of the fifth president, Frank B. Branch. Recipients of the scholarship must major in English or Modern Foreign Language and maintain a 3.0 grade-point-average.



Jan and Chuck Putnam Scholarship

This scholarship was established by the Putnams, who are both avid supporters and alumni of the college. The recipient must be a full-time student from Webster County and maintain a 2.5 grade-point-average.



Bobby Eugene and JoAnn Robertson Killebrew Scholarship

This scholarship was initiated by Karan Killebrew Clark and Eric Clark honoring the late Bobby Eugene and JoAnn Robertson Killebrew. The Killebrews lived in Durant until 1976, and thereafter in Forest. They were tireless supporters of education in Mississippi in both the public schools and in higher education. The recipient must maintain a 3.0 grade-point-average, and preference for the award shall be given to students from Holmes County with second preference given to students from within the Holmes district.

Types of Planned Gifts and Benefits

Bequests

Leave a gift without diminishing the assets available to you during your lifetime.

Charitable Remainder Trusts

Give to Holmes while providing a life income for yourself or beneficiaries.

Retained Life Estate

Transfer the ownership of a home or farm while retaining the right to use the property during your lifetime.

Gift Annuities

Receive life income without a huge donation or complicated agreement.

Life Insurance

Make a substantial gift through relatively modest annual payments.

Holmes Community College is ready to work with you and a financial advisor or attorney in confidence and without obligation, to help you explore the best possible method of giving for your circumstance.

Bequests & Trusts

The following people have named Holmes in their estate planning and have provided appropriate confirming documentation:

Clytice & the late

Burnis Gardner

Mrs. Freda B. Harper &

the late Billy Harper

Margaret & the late John T.

Keeton, Jr. (4)

Anonymous Donors

Memorials

Aaron Belk

Mr. & Mrs. Johnny Belk

Jerry Wayne Brown

Mr. Stephen Brown

Charles Collier

Grenada Higher Ed. Assoc.

Mrs. Frances Cooper

Mrs. Margaret Davis
Dr. Lindy McCain

Nita H. Dyer

Mr. & Mrs. W.A. McCool
Mr. & Mrs. Andrew Townes, Jr.

Wilodean Burrell Edwards

Mrs. Maggie Garrett

Taylor Gagneaux

Mr. & Mrs. Davis A. Richards

Burnis Gardner

Mr. & Mrs. Johnny Belk
Mrs. Maggie Garrett

Marlin Giles

Mrs. Maggie Garrett

Ruth Golden

Mrs. Carolyn Thomas

Helen Haffey

Mrs. Carolyn Thomas

Jo Ann Ledbetter

Mrs. Carolyn Thomas

Susan Lepard

Mrs. Carolyn Thomas

Kevin Moore

Grenada Higher Ed. Assoc.

Joey Netherland

Mrs. Sherrie Cheek
Mrs. Maggie Garrett
Dr. Lindy McCain

Harlan Reynolds

Mrs. Carolyn Thomas

Joanna Spell

Dr. Gail Muse-Beggs
Dr. Lindy McCain

George Thomas, Sr.

Mr. & Mrs. Alton Dunaway
Mrs. Maggie Garrett
Mr. & Mrs. Jeff Jeter
Mr. & Mrs. George Pilgrim
Mrs. Carolyn Thomas

Julie Tipton

Mrs. Sherrie Cheek

Frances Wynne

Mrs. Maggie Garrett

Honorarium

W.C. Shoemaker

Mr. & Mrs. Johnny Belk

Establishing a Scholarship

Endowed Scholarships

Established with a minimum donation of \$15,000 to the Holmes Community College Development Foundation. The gift will constitute the initial principal for the endowment and only the income earned will be awarded in the form of scholarships.

Patronage Scholarships

Established with an annual gift of \$500.

The amounts can be gifted one time or the Development Foundation will work with donors over reasonable periods of time to meet the requirements for scholarship amounts. All gifts are fully tax deductible.

For more information about establishing a scholarship at Holmes Community College, contact Lindy McCain, 662-472-9017 or lmccain@holmescc.edu



This year the college mourned the passing of three employees. From left, Joey Netherland, Sr., Joanna Spell, and Julie Tipton.

Mini-grants

Foundation Mini-Grants

Each year, the Foundation awards mini-grants to supplement departmental funding. It is often the implementation of these grants that allow classroom and office technologies to remain up-to-date. Mini-grants can make a large impact to an area of the college with minimal investment. Staff and faculty from all campuses are encouraged to apply for these grants when specific needs are identified.



Jim Thompson, Library

Purchase of Robotics (Miscellaneous)
\$1,789.63



Joe David White, Science

Purchase of projector, digital screen,
and sound system to enhance
instructors' i-pad lectures
\$10,801.00



Bronwyn Martin, Recruiting

Purchase of 6 small table top banners
and 3 large table top banners for
recruiting events. (3 for each campus)
\$500.00



Lisa Anglin, Math Department

Purchase of the Mimio Teach
Interactive System.
\$4,850.00



Bronwyn Martin, Marketing

Purchase of HP DesignJet A72600 24-in
Post Script Printer for poster and vinyl
printing and supplies
\$3,322.23



Michael Yates, Fine Arts Department

Purchase of a MAC desktop computer,
Yamaha Studio Monitors, Subwoofer for
Entertainment Industries Classroom
\$3,650.00

TOTAL AWARDED \$24,912.86



Above: Mr. Jack Holmes' ('51) birthday is celebrated at a Holmes Basketball game.

Left: Dr. Robert Harris speaks at the ninetieth Associate of Arts Commencement.



Above: Alumnus James Young, Class of 1963.

Left: Frank Branch, Jr., son of HCC president Frank Branch

Below: Premier Medical Group participates in the 2018 Holmes CC Foundation Golf Classic.



Above: Dr. Lawanda Herron speaks at the Associate of Applied Science graduation



Holmes Retirees



Thirteen Retire from Holmes

Thirteen Holmes employees who retired after the 2017-18 school year were honored during a reception at the President's Home on the Goodman Campus Friday, April 27. Retirees from the Goodman Campus included: Jerry Harris, Dr. Robert Harris, Charlotte Gale Sheppard, Jim Shirley and Ceressa Sims.

Retirees from the Grenada Campus were Gwen Graham and Dr. LaWanda Herron. Ridgeland Campus retirees included Diane Allgood, Daniel Blount, Mary Brantley, Jimmy Houston, Sr., and Linda McCollum. Finally, from the Yazoo City location, David Parker.

*First Row: Diane Allgood, Ceressa Sims, Charlotte Gale Sheppard, Linda McCollum, Dr. LaWanda Herron, Mary Brantley, Gwen Graham
Second Row: Jerry Harris, David Parker, Dr. Robert Harris, Daniel Blount, and Jim Shirley*

Looking for a place to hold your next gathering?

Check Out The Holmes House!

The old president's home is now called the Holmes House. It is provided to alumni, staff & friends of the college to use. All profits are used for the refurbishment & upkeep of the Holmes House. Lodging includes use of the kitchen & sitting areas.

If you are interested in reserving the Holmes House for your next event or visit to campus, please call Katherine Ellard at 662-472-9134.



Thanks to our Sponsors!

Corporate Sponsors

Renasant Insurance, Inc.
The L Group
S&S Recovery
Renasant Bank
Jackson Web Works
JH&H Architects
State Farm Ins., Michael Fancher
Cspire
Ivey Mechanical Company
Premier Medical Group of MS

Follet
Mitchel Metal Products
Valley Foods
Britt Barnes Realty Group &
Grappin Construction
Anchor Art Company
Howard Technology Solutions
Culpepper Funeral Home
North American Coal Corp.
Southern Beverage Company

Hole Sponsors

Office Products Plus
Dallas Printing, Inc.
Boswell Media (2)
Holmes County Bank
Jackson Web Works
Bell Dental Durant, LLC
HCC Soccer
Central MS Office Supply
Paul Shelton
Three Wise Deans: Dr. Harville,
Dr. Jones, & Dr. Lawrence
Mac Haik Autogroup
Campus Mart
HCC Football

Individual Sponsors

Lina Lopez
Gretchen Ware
Michael Pawlik
Amanda & Donnie Lindsey
Mike Blankenship
Angela Crain
Melissa Love

Prize Sponsors

Dixon Golf
Holmes CC Men's Soccer
Will, Tonya, & Cameron
Lawrence

Flight Winners

1st Flight:

Mitchell Metal Products

*Brent Telano
Trey Bowman
Dakota Brasher
Zack Faver*

2nd Flight:

North American Coal Corp.

*Keith Reed
Mike Thomas
Eli Frierson
Andy Thomas*

3rd Flight: HCC Soccer

*Ryan Perkins
Matt Convertino
Collin Maley
Jon Marcus Duncan*

Longest Drive:

Jack Burrell

Closest to the Hole:

*T. Stubbs
Zack Faver
Jack Burrell
Morgan Bondurant*



1st Flight Winners: Mitchell Metal Products



2nd Flight Winners: North American Coal Corporation



3rd Flight Winners: HCC Soccer

Spotlight on Holmes

Hosemann Foundation Provides Scholarship to 20 Local Educators for New Holmes Course

An advocate for Applied Behavior Analysis (ABA) therapy, Mississippi Secretary of State Delbert Hosemann is helping more Mississippians gain credentials to work in the field. One such way is through the Applied Behavior Analysis Scholarship for Teachers, provided by the Hosemann Family Autism Foundation. The scholarship was offered to the first 20 Mississippi educators that applied, registered and passed the PSY 2543 – Applied Behavior Analysis course at Holmes Community College that began on Jan. 22.

“This course is one of a kind in this country—and it is offered at Holmes Community College,” Secretary Hosemann said. “It is aimed directly at providing teachers for some of our most vulnerable citizens. The goal is two-fold: first, we want to educate teachers to become familiar with ABA therapy and take it back to their classrooms. Second, these teachers will have the educational background to become Registered Behavior Technicians (RBTs). Truly, these graduates will change the lives of our children.”

In the spring of 2018, Holmes made history as the first community college in the nation to offer PSY 2543 - Applied Behavior Analysis.

This online course satisfies the 40-hour training requirement which is required to sit for the RBT Competency Assessment and RBT National Exam. This allows the individual to directly implement behavior-analytic services under a supervising Board Certified Behavior Analyst (BCBA). RBTs meet directly with clients and work in a variety of settings, including behavioral health clinics, schools and development centers.

“I am excited and appreciative to have the opportunity to be an instructor for the PSY 2543 - Applied Behavior Analysis course at Holmes,” said Dr. Kimberly Bellipanni. “As a practitioner in Mississippi, I am aware of the constant need for more availability of resources for families with children diagnosed with autism. I am happy to be a part of a course that is providing opportunities for students to become Registered Behavior Technicians for ABA clinics within our state.”

The cohort of students who began in January are the fourth group to take the course, but the first to be eligible for the ABA Scholarship for Teachers. To qualify, they had to be a teacher, teaching in the State of Mississippi. The cost of tuition for the course will be paid

by the Foundation upon successful completion of the course with a grade of a C or higher. The Foundation will connect interested teachers with a Board-Certified Behavior Analyst (BCBA), as well. This allows teachers who successfully complete the course to satisfy one of the criteria toward becoming a Registered Behavior Technician (RBT).

One of those scholarship recipients was Leflore County Elementary School teacher Kim Different.

“I am so grateful to the Hosemann Family Autism Foundation for providing the scholarship that allowed me to take the Applied Behavior Analysis course PSY 2543 at Holmes,” Different said. “Throughout my 19 years as a special education teacher, I have been involved with collecting data to use in a Functional Behavior Analysis Assessment. Now, I have such a better understanding of the complete process. In addition, I have learned so many strategies that I can begin using with my special needs students as well as my general education students. I would like to offer my most sincere thank you to this organization for this opportunity.”

The group who took the 1st 8-week course offering included



teachers from all across the state, representing 15 counties. The next course will begin March 18, during the 2nd 8-week term. “This is a wonderful opportunity for Holmes Community College to be the first community college in the nation to offer the Applied Behavior Analysis course,” said Vice President for Academic Programs Dr. Fran Cox. “This course addresses autism, and I continue to realize what a great service this is to our Mississippi communities. As I read that

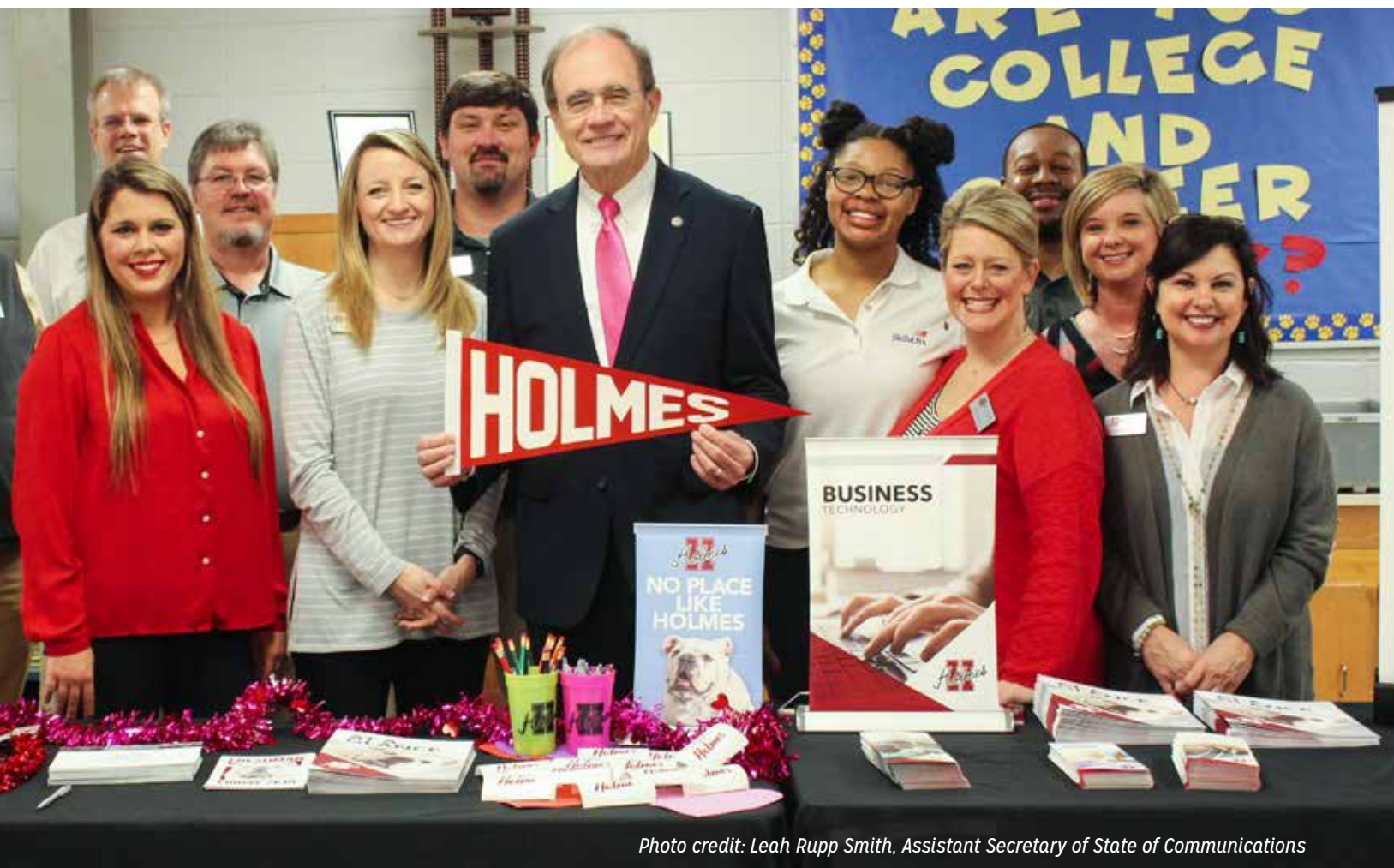


Photo credit: Leah Rupp Smith, Assistant Secretary of State of Communications

one out of every 59 children are affected by autism, it becomes very real to me that there continues to be a large amount of work to be done. The Hosemann Family Foundation Scholarship that is being provided to our Mississippi K-12 educators will certainly serve as a catalyst to provide some of the necessary knowledge and help for autistic children.”

Formed in 2017 by Delbert and Lynn Hosemann and their children, the Hosemann Family Autism Foundation is a nonprofit organization created to assist children on the autism spectrum and their families in accessing educational, therapeutic, medical

and behavioral health-related resources.

For more information about the Hosemann Family Autism Foundation Applied Behavior Analysis (ABA) Scholarship Program for Mississippi’s Teachers, please contact hfaulismfoundation@gmail.com.

For more information about the Holmes Community College PSY 2543 – Applied Behavior Analysis course, contact Dr. Bellipanni at kbellipanni@holmescc.edu or call Holmes Community College at (662) 472-9146. 🐾

Pictured is (center) Mississippi Secretary of State Delbert Hosemann with Holmes instructors at a College and Career Fair in Canton on Feb. 14. Secretary Hosemann not only supports Holmes at local events, but provides a scholarship through the Hosemann Family Autism Foundation that enables 20 teachers to complete PSY 2543 - Applied Behavior Analysis at Holmes.

SAVE THESE DATES

Upcoming Events Alumni Lunches

Sports Hall of Fame

*April 4th
Frank Branch Coliseum
Goodman, MS*

Golf Tournament

*May 8th
Deerfield Golf Club
Madison, MS*

Homecoming

*October 24th
Holmes Community College
Goodman, MS*

July 9th

*Grenada County
Montgomery County
Webster County*

July 10th

*Attala County
Choctaw County*

July 16th

*Madison County
Yazoo County*

July 17th

*Holmes County
Carroll County*

