



The Foundation

Report



2025 | A publication of the
HOLMES COMMUNITY COLLEGE
DEVELOPMENT FOUNDATION



About the Foundation

The Holmes Community College Development Foundation was established more than 50 years ago to represent the nine-county district the college serves. Its purpose is to provide funds for scholarships for students attending Holmes as well as provide funds to support other educational activities of the college, such as faculty development, modernization of classroom equipment, student development activities, and sponsorship of capital improvement campaigns.

**HOLMES COMMUNITY COLLEGE
DEVELOPMENT FOUNDATION
P.O. BOX 527, GOODMAN, MS 39079**

The Foundation Report

The Foundation Report is the official publication of the Holmes Community College Development Foundation, published by Holmes' Development Foundation.

FEATURES

7 A Journey of Love and Achievement

Robby and Reba Robertson, a home-grown love story.

8 Shelton Award

Amanda Lindsey: a shining light to Holmes' students for nearly two decades.

9 Catch a Glimpse

Get a first-look at the new Allied Health Building coming to the Ridgeland Campus.

10 Meet Holmes' First Female Electric Lineman

Gracie Gustafson changed her course from aerospace engineering to something more "hands on."

18 New Alford Scholarship

Honoring the legacy of some truly great Bulldogs that are giving back.

IN THIS ISSUE

- 2 From the College President
- 3 Board of Directors
- 3 Board of Governors
- 4 From the Foundation President
- 5 Foundation Staff
- 6 Alumni Association Staff
- 7 Cover: Robby & Robertson
- 8 Campus News
- 12 Facilities Updates
- 14 Shelton Award Winner
- 16 Foundation News
- 18 Established Scholarships
- 21 Annual Giving
- 22 Memorials & Honorariums
- 23 Bequests & Trusts
- 24 Scholarship Recipients

UPCOMING DATES:

Golf Tournament	May 1
Spring Pops Concert	May 1
Graduation	May 14
Class Reunion (1975-1980)	July 19
Homecoming 2025	October 23



Foundation Leadership

From the College President:



Dear Holmes Family,

At Holmes Community College, we remain steadfast in our commitment to student success, academic excellence and community engagement. Through strategic investments and forward-thinking partnerships, we continue to shape a learning environment that empowers students and strengthens the communities we serve.

Holmes is more than a college - it is a place where aspirations take root and futures are transformed. Our recent initiatives reflect this dedication, including the launch of the new Associate Degree Nursing (ADN) program on the Goodman Campus. This program not only expands educational opportunities but also addresses a critical need in our region's healthcare workforce, equipping students with the skills to excel in high-demand careers.

Beyond academics, we are enhancing the student experience through significant infrastructure improvements. From modernized classrooms to the development of a state-of-the-art library, to building a new health science facility that will also foster community engagement in Ridgeland, these upgrades are designed to foster innovation, collaboration and student success. Our facilities are more than just buildings; they are the foundation upon which dreams are built and potential is realized.

None of this would be possible without the generous support of the Holmes Community College Foundation. Through scholarships, resources and essential services, the Foundation plays a crucial role in ensuring our students have the tools they need to thrive.

Together, we are building a legacy of excellence - because there truly is "No Place Like Holmes."

Jim Haffey, Ph.D. ('96)
President, Holmes Community College

*Of all total private
donations to the
Holmes Community
College Foundation:*

40% ARE FROM
INDIVIDUALS

60% ARE FROM
BUSINESSES

2024 Board of Directors

Jesse Leverette (P)
 Dr. Brady Richardson (VP)
 Wirt Hayes (T)
 Joe Adams
 Johnny Belk
 Eugenia Collins
 Maggie Garrett
 Jack Holmes
 Wilton Neal
 Rev. Gene Richardson
 Robby Robertson
 Austin Taylor
 Ben Tharp
 John Wayne Vanhorn
 John Wallace
 Dr. Lynn Wright

AUDIT COMMITTEE

Wirt Hayes
 Robby Robertson

NOMINATING COMMITTEE

Jack Holmes, Chair
 Wilton Neal
 Dr. Brady Richardson

INVESTMENT COMMITTEE

Dale McBride, Chair
 Wirt Hayes (per By-laws)
 Jesse Leverette (per By-laws)
 John Wallace

EX-OFFICIO MEMBERS

Dr. Jim Haffey,
 HCC President*

Dr. Lindy McCain,
 Foundation Executive
 Director

Walter Alford,
 HCC Board of Trustees*
 President (voting member)

Jacob Black,
 Alumni Affairs President

Sonny Sparks,
 VP for Financial Services

Dr. Bronwyn Martin,
 VP, Ridgeland Campus

Dr. Matt Surrell,
 VP, Grenada Campus

Madison Cummins,
 Assistant Secretary &
 Treasurer

Katherine Ellard, Coordina-
 tor of Alumni Affairs/
 Public Relations Specialist

2024 Board of Governors

ATTALA COUNTY

Johnny Belk
 Maggie Garrett
 Wirt Hayes
 Jack Holmes
 Rev. Gene Richardson
 Dr. Brady Richardson
 Robby Robertson
 Frank Shaw, Jr.
 Austin Taylor
 Carolyn Thomas

CARROLL COUNTY

Wilton Neal
 Josephine Neal-Browning

CHOCTAW COUNTY

Ben Tharp

GRENADA COUNTY

Paul McCarley

HOLMES COUNTY

Dale McBride
 Dr. Lynn & Elton Wright

MADISON COUNTY

Betty Sue & Joe Adams
 Jacob Black

Danny Chandler
 Becky & Jesse Leverette
 Dr. Sam Massey
 Paul Shelton
 Derek Starling
 John Wallace
 Tommy Worthey

MONTGOMERY COUNTY

Eugenia Collins
 Margaret Harris
 Christy and John Wayne
 Vanhorn

WEBSTER COUNTY

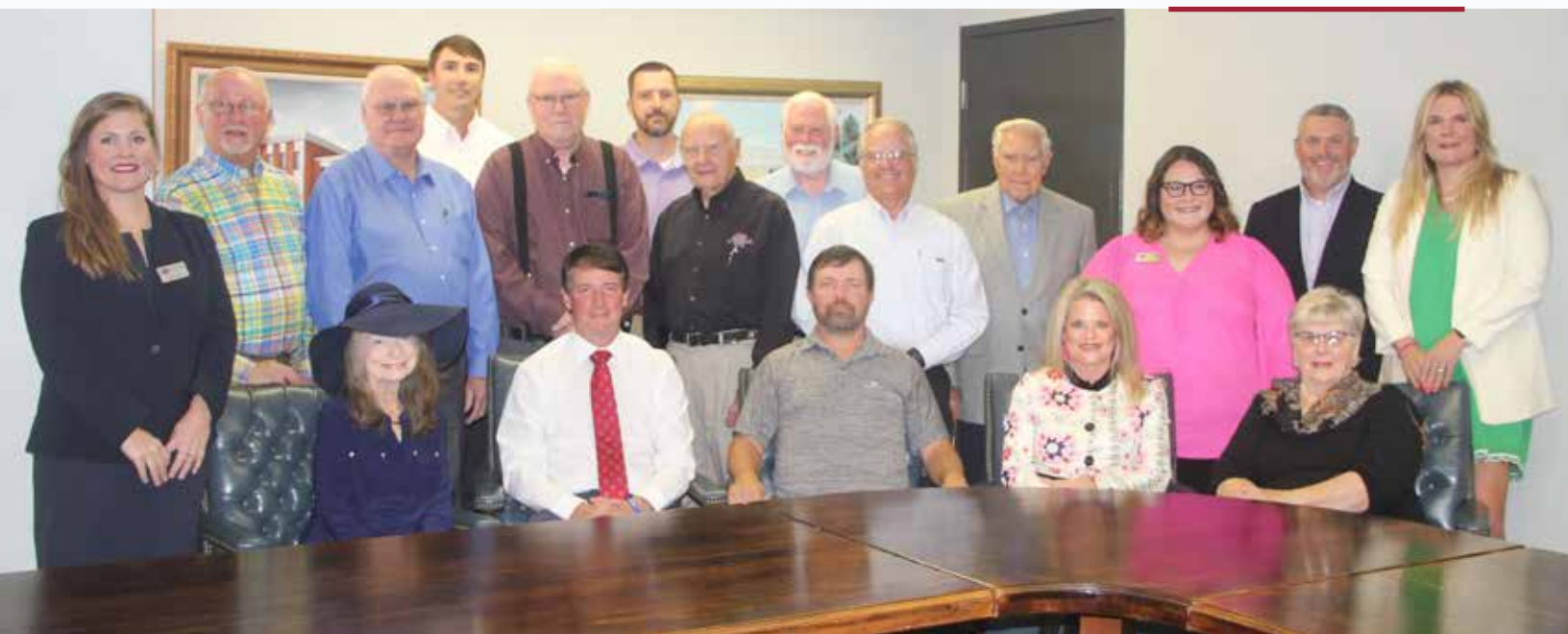
Hugh Gibson
 Jan & Chuck Putnam

YAZOO COUNTY

Jim Golden

OUT OF DISTRICT

Jack McDaniel (Hinds
 County)
 Dr. J.L. Peebles
 (Okribbeha County)



From the Foundation President:



Dear Friends and Supporters,

It is a true privilege to connect with you through our annual magazine, where we celebrate the profound impact of your generosity. Your unwavering support serves as the foundation upon which our students build their dreams, and for that, we are deeply grateful.

Throughout the years, we've shared incredible stories of student success—this year is no different. In these pages, you'll find inspiring achievements made possible through your generosity, demonstrating the tangible difference you make in the lives of our students.

Because of you, we have expanded scholarship opportunities, enriched academic programs and introduced cutting-edge technology that enhances learning. The resilience and determination of our students, combined with your belief in their potential, create a ripple effect that extends far beyond the classroom—transforming lives and strengthening our entire community.

As you explore this year's magazine, I encourage you to take pride in the meaningful change we've accomplished together. Looking ahead, we are excited about new initiatives designed to further elevate the educational experience at Holmes Community College. Your continued engagement, ideas and support are invaluable as we shape the future.

Thank you for being an essential part of our Holmes family. Your commitment not only inspires our students but also fuels the growth and success of our entire campus. Together, we can continue to create life-changing opportunities for generations to come.

The Holmes CC Foundation greatly appreciates the HCC administration, faculty, and staff. Thank you for continuing to provide a bright future for our students. Also, thanks to all our Foundation board members for your loyalty and support.

With gratitude,

Jesse E. Leverette, Jr. ('65)
President, Development Foundation
Holmes Community College

*In 2024, the HCC
Foundation awarded
\$150,000
in scholarships.*

Development Foundation Staff



DR. LINDY MCCAIN ('88)
Exec. Director & VP
for Student Affairs
lmccain@holmescc.edu
(662) 472-9017



KATHERINE H. ELLARD
Coordinator
of Alumni Affairs
kellard@holmescc.edu
(662) 472-9134



MADISON CUMMINS
Assistant Secretary/Treasurer
mcummins@holmescc.edu
(662) 472-9017



WIRT HAYES ('68)
Treasurer
(662) 472-9017

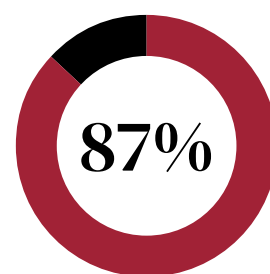


SONNY SPARKS
Executive VP for
Financial Services
ssparks@holmescc.edu



BRITTNI DICKERSON ('09)
Administrative Assistant
bdickerson@holmescc.edu
(662) 472-9017

Capital Campaigns



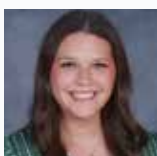
STEM Major Project
\$869,646 / \$1,000,000

*These funds will enhance
STEM programs, provide
scholarships for students
and supply instructional
equipment and supplies for
STEM Divisions.*

Alumni Association Officers



MATT MCCORRY ('08)
Alumni Association
President



SHELBY SONES ('18)
Alumni Association
Secretary/Treasurer



NICKI RICHARDSON ('95)
Alumni Association
Vice President



JACOB BLACK ('08)
Alumni Association
Past President



**National
Endowment for
the Humanities
Challenge Grant**
\$463,696 / \$463,696

*The Foundation is proud to
report we have met 100% of
our goal for this grant!*

ALUMNI ASSOCIATION EX-OFFICIO MEMBERS

Jessie Leverette
Dr. Brady Richardson
Wirt Hayes
Dr. Jim Haffey
Dr. Lindy McCain

Katherine Ellard
Dr. Matt Surrell
Andy Wood
Dr. Bronwyn Martin

**Mississippi's
Public Institutions**
138,736 Enrolled in 2024

4-YEAR (75,088)

2-YEAR (63,675)

*Nearly half of students that
enroll in a Mississippi public
institution of higher learning
chose a community college.*



Robby and Reba Robertson: A Journey of Love and Achievement

In the small railroad town of Sallis, Robby Robertson and his high school sweetheart, Reba, have woven a rich tapestry of love, education, and unwavering commitment to their community. The town of Sallis, one hour north of the once-known community of Attalaville, was named after the former owner by Dr. James Sallis. The couple's story is one of perseverance, partnership, and shared dreams that have significantly shaped their lives and the lives of those around them.

From childhood friends to lifelong partners, the Robertson's journey together began in elementary school, where a combined fifth and sixth-grade class learned together. Then at East Holmes Academy they sparked a connection and their friendship blossomed into dating in sixth and seventh grades.

Robertson grew up on a cotton farm, while Reba lived next door to the local gin. During their youth, Robby and his brother would bring cotton to town on a trailer for their father. It was during these trips that Robby would seize the opportunity to visit Reba, getting a ride back home with his brother when the cotton wagon finished its delivery at the gin.

Robertson's educational journey continued at Holmes Community College, where he attended from 1976 to 1977 on an ACT scholarship. He credits his experience at Holmes to the inspiring teachers he encountered, including Mr. Earl for math and Mrs. Powers for English, as well as fond memories of life in the Attala Dorm. After completing his time at Holmes, he transferred to the University of Mississippi, where he remained actively engaged in campus life. Notably, he served as chairman of the Committee of 82, an all-student lobbying council that advocated for the Institutions of Higher Learning (IHL) at the state capital during Governor Cliff Finch's term. In 1980, Robby earned a Bachelor of Arts in Business Administration, providing a foundation for his successful career in the insurance industry.

To help pay for his college expenses, Robertson started working in addition to his studies. He ran for justice court judge and won, serving six terms from 1980 to 2003 on Tuesdays and Thursdays while still selling insurance.

Reba's academic path also began at Holmes Community

College, where she was an active member of Phi Theta Kappa, the honor society for two-year colleges. She participated in Vespers and the Baptist Student Union (BSU), showcasing her commitment to both academics and community service. After finishing at Holmes from 1977 to 1979, Reba pursued her passion for education at Mississippi State University, earning a B.A. in secondary education with a specialization in science and biology. She dedicated 25 years of her life to teaching at local schools, including East Holmes Academy, Presbyterian Day School, and Ethel High School, positively impacting countless students. Reba has instilled a love for learning in her students, fostering curiosity and engagement in the classroom.

The couple's wedding was a significant event in Sallis; in 1981, Robby and Reba had a double wedding ceremony along with Reba's sister, further bonding their families and communities.

They have been dedicated members of Sallis Baptist Church for over forty years, where Reba teaches third and fourth grade Sunday school, and Robby serves as a deacon and song leader.

Robby has been active in risk management at Holmes for the past 25 years, contributing his expertise and insights to help the college. He is a member of the Legacy Club and consistently attends homecoming events. Additionally, Robby is involved with the Holmes Development Foundation, where he continues to support education and community growth.

The Robertson's story reminds us of the strength found in companionship and purpose, illustrating how love can drive us to achieve great things and make a real difference in the lives of those around us. Their lives reflect a commitment to education, service, and love, serving as an inspiration to all who know them.

The Robertsons have one daughter, Dr. Lauren Eaton and her husband Luke, who also live in Sallis. They have three grandsons, ages 14, 11, and 7.

The couple still resides in Sallis, where you can find them following their grandsons' activities and tinkering on their four vintage vehicles.



Ridgeland Practical Nursing Program Achieves 100% Pass Rate on NCLEX-PN

The Holmes Community College Practical Nursing (PN) program on the Ridgeland Campus had a 100 percent pass rate on the National Council Licensure Examination (NCLEX-PN) exam.

“We are proud to announce that all of our practical nursing students have passed the state licensure examination on their first attempt, with their dedication, rigorous training and unwavering support,” said PN instructor Dr. Lakesia Sutton.

Instructor Heather Roberts also expressed her excitement for the students.

“I am immensely proud of our graduates and their accomplishments over the past year,” Roberts said. “Their achievement is something to take pride in as they begin the first steps into a professional future. We value the benchmark of passing NCLEX on the first attempt as we feel it sets the tone for confidence and success moving forward.”

“I am extremely proud of our PN students and their NCLEX scores,” said Director of Health Sciences, Allison DeWeese. “These students put in many hours of studying and preparing for the NCLEX. I look forward to hearing about their successful careers in health-care. I would like to also congratulate the PN instructors, Mrs. Roberts and Dr. Sutton. Without their dedication to the students this would not be possible.”

The PN program prepares students to assist in providing general nursing care under the direction of a registered nurse, licensed physician or dentist. Intensive preparation for the NCLEX-PN Exam and transitioning from student to employee is provided in the program.



Graduates included Cortlyn Norris Bardwell, Alexandria Dominique Cyrus, Alicia Goldman, I'Leyah Janae Green, Anastasia Kelly Ingram, Shafreta "Shae" Kelly, Destiny Janae Malone, Kavondra McCauley, Megan Brittany Middleton, Jessica Quarles, Hannah Alexis Rigby, Nikeya Rogers and Sara Kathryn Self.



Plans Underway for New Allied Health Facility on Holmes' Ridgeland Campus

HCC's Ridgeland Campus will soon have a brand-new Allied Health Facility for the Associate Degree Nursing, Practical Nursing, Occupational Therapy Assistant and Surgical Technology programs.

"Madison County has grown 14.6 percent in the past 10 years; therefore, the addition of this new space has poised Holmes for future growth in our allied health programs," said Holmes Ridgeland Campus Vice President Dr. Bronwyn Martin. "The facility's location alongside I-55 will increase our visibility; emphasizing our footprint in Madison County. Watching projects of this magnitude come to fruition fills me with pride for Holmes and excitement for our future students and constituents."

Thrash Commercial Contractors, JH&H Architects Planners Interiors, Benchmark Engineering & Surveying, LLC, and Smithers Engineers + Consultants will make up the team designing and building the new facility.

In addition to the classrooms and

offices for the various health science programs, the new facility will also provide a large multipurpose space to be used as a shared resource. With banquet seating for 350 and lecture-style seating for 530, Holmes will be able to accommodate more group events for the local community.

"The Health Science Building will allow the Health Science Programs on the Ridgeland Campus to continue to grow as well as expand our Health Science offerings," said Director of Health Sciences Allison DeWeese. "The building has been a vision for several years. I am excited to see the vision become a reality."

"The Career Technical Education department is excited to see this vision for our growing Health Sciences become a reality," said Vice President of Career Technical Education Dr. Amy Whittington. "Years of planning and hard work have been put into this project, and the growth of Health Sciences at Holmes has proven to be a successful investment for the college and communities it serves."

Holmes ADN Instructor Alicia Turner Among 'Best in Healthcare'



Holmes Community College Associate Degree Nursing (ADN) instructor Alicia L. Turner, MSN, RN, was recently recognized by the organization *Today's Nurse*. The healthcare organizations honors individuals who are making an impact, and Turner was recognized as one of the Best in Healthcare for her integrity, experience and dedication.

Turner joined the Holmes Ridgeland Campus nursing faculty as an adjunct in 2017 then full-time in 2020. She came to the college from Mississippi Baptist Hospital in Jackson where she worked full-time as head nurse on the 5D oncology unit. Turner continued working at Baptist part-time until last year.

A Holmes alumna, she holds a mortuary science degree, a practical nursing degree and an ADN degree from the college. Prior to completing her degrees at Holmes, she earned

a bachelor's degree in biology from Jackson State University, and since then, has earned a BSN from the University of Women as well as an MSN from University of Alabama in Birmingham. Turner will graduate from UMMC on May 23 with her Doctoral of Nursing Practice.

Turner was named Nurse Educator 2020 by Baptist and is a member of American Nurses Association, American Psychiatric Nurse Association, Oncology Nursing Society and Phi Theta Kappa Sigma Mu honor society. She is also the Co-Chair of Education for Eliza Pillars Registered Nurses of Mississippi.

In her free time, she enjoys reading, watching movies with her family, and working in the yard. Turner also enjoys volunteering at church with the food ministry, singing in the church choir, and mentoring new nurses.

Turner and her husband Frederick have three children: Kaylyn, Maddison and Brandon.

Breaking Barriers: Meet Holmes' First Female Electric Lineman

When Gracie Gustafson sat in her calculus class at the University of Alabama in Huntsville, where she was pursuing a degree in aerospace engineering, she had a sudden realization: "I don't like working on computers, and I'd rather work with my hands." That moment led her to shift gears and become the first female electric lineman at Holmes Community College – a career path that would take her far from the desk and into an industry traditionally dominated by men.

Born and raised in Grenada, Gustafson has always been an athlete. From the time she was 3 years old, she was playing soccer, a sport that became her number one love. "I've always been into physical activities," Gustafson said. "Nowadays, I get my workout through lineman work."

After graduating from Grenada High School, her athleticism took her to Itawamba Community College, where she played soccer, followed by a stint playing at Jones College, and finally, playing at the University of Alabama in Huntsville. It was during a class at UAH that she had her epiphany: aero-

space engineering wasn't her passion. Though she was a good student, who had a 29 on her ACT, the classroom was not her favorite place to be. She wanted something hands-on, a career that wouldn't tie her to a computer screen.

"I looked up the top five highest-paying jobs that don't require a college degree, and electrical lineman was on the list," she recalled.

That search led Gustafson to the Holmes Goodman Campus, where she's now the first female student in their electrical lineman program, and only the second female lineman student in Mississippi overall.

The program lasts 16 weeks and offers students fundamental hands-on training. While enrolled, they earn a Class A commercial driver's license, knowledge of the Electric Safety Code, as well as Occupational Safety and Health Administration (OSHA) standards and rules pertaining to the various types of utility providers they could potentially find employment with. Additionally, the students learn how to operate heavy machinery used in line work, CPR training and first

aid and pole-climbing skills. Holmes' electrical linemen program only accepts 14-16 students per semester and it is a very competitive entry process.

"The instructors for this program, Mr. Kenny and Mr. Lamar, they're just wonderful," Gustafson said. "They're great teachers, full of knowledge. They hold you steady and let you know when you make a mistake, but in a way that you can learn from. It's the perfect balance."

While the physical demands of the job can be daunting, Gustafson isn't fazed.

"The guys might be faster and stronger, but I'm able to do it," Gustafson said. "It's hard for all of us, if I'm being honest, but we're well trained. For other girls interested in this line of work, I say go for it, if it's what you want to do! You may not be as strong as the guys, but you can be as smart, and you can do this. Personally, I like being different, and being an inspiration to those who think women can't do it because it's a male-dominated field."

Her family has been supportive throughout her journey. Gustafson is the daughter of Crystal and Jason Gustafson, and the sister of Brady, 15.



"I researched various programs, and I can assure you, Holmes without a doubt had the nicest equipment and facilities, and was also the most organized. It was my number one choice."



HCC Hosts Mississippi's First AWS Information Infrastructure Apprenticeship Program

Holmes Community College successfully launched Mississippi's first Amazon Web Services (AWS) Information Infrastructure Pre-Apprenticeship (I2PA) program, designed to equip participants with in-demand skills for careers in information infrastructure. There have only been two other I2PA programs in the nation so far. The four-week program ran from Nov. 4-Dec. 6, concluding with an opportunity for graduates to network with subject matter experts from AWS as well as other vendors and contractors on the last day.

Cham Blain, Ben Kay, and Larry Tait served as program instructors, with various industry representatives coming in to lead trainings, as well.

Participants completed 30 hours of hands-on training each week, learning the skills needed to build, connect, power and operate the infrastructure that drives the global information economy. Training was conducted using the tools and materials found in the field, providing practical, job-ready experience in AWS cloud technology, networking, and security. Participants explored building projects, including fiber optics, electrical and mechanical systems, computer servers, and the software used in the design and construction of these facilities and systems. They gained insights into high-demand careers and performed work functions found in real-world job settings.

Graduates of the program included Nicole Arbour, James Austin, Nicholas Beasley, Robert Burgess, Romello Carter, Alysia Green, Brendon Groves, Brittany Hobson, Gabriel Hopkins, Bryant Jackson, Travis Johnson, Nathaniel Jones, Ryan Korn, Andrew Levine, John Munn, Daniel Rosenbloom, Bre Anna Sanders, Brian Shook, Mikel Stephen, Albert Taylor, Hanson Tran and Alana Woodruff.

Holmes Mourns the Passing of Assistant Coach Brooke Walker

Holmes is sad to announce the tragic passing of Assistant Women's Basketball Coach Brooke Walker from a car accident on Sunday, January 12.

Walker, 26, a Terry native, was in her fourth season as assistant women's basketball coach at Holmes. She came to Holmes from Humphreys Academy in Belzoni, where she served as head coach for the junior high and high school girl's teams in 2020 and 2021. Her junior high squad won the district title while her high school team won the district, North State and A state championships, and she was named the MAIS A Coach of the Year.

She was also a big part of AAU in Mississippi serving as the head coach of the Team Mississippi 15U team and assistant coach of the Team Mississippi 18U team. She was also an assistant coach with the Mississippi Jazz AAU teams (6th-12th grade). Her teams have won the Nike National Championship twice and has 15 local and regional championships.

She was a graduate of Copiah

Academy, where she excelled on the basketball court. She was named team MVP, MAIS All-Star and First Team All-Conference. After Copiah, she played two seasons at Northwest Mississippi Community College.

She held an associate of arts degree from Northwest and a bachelor's degree in general studies with minors in Sociology, English and Education from the University of Mississippi.

"Our Holmes family mourns the loss of Madison Brooke Walker," Holmes President Dr. Jim Haffey said to the Holmes staff. "Brooke served as our Assistant Women's Basketball Coach, and was a kind, beautiful soul. The College prepares to support Brooke's family and her team in every way we can. Please take time to reflect on her commitment to her players across the state, and to pray for her family."

Tributes have been pouring in for Walker on social media from her friends and family along with those from the basketball community.



Her alma mater, Northwest, recognized Walker prior to their basketball game Monday with a moment of silence. The Lady Bulldogs did the same prior to their home game on January, 16 with Gulf Coast along with displaying her "BW23" on their pregame uniforms.

If you would like to contribute to the Brooke Walker Women's Basketball Fund please contact the Development Foundation Office at (662) 472-9017.

Facilities Updates

Holmes Community College made significant strides in its facilities and equipment updates throughout 2024, emphasizing the continued growth and enhancement of the institution's programs and infrastructure.

In January, the college kicked off the year with the successful hosting of the Holmes County 4-H Livestock Show at Bulldog Ranch. The college also announced plans to hold the 4-H State Camp on campus that summer, reflecting its commitment to supporting local community programs. As part of ongoing improvements, the college planned to add new classrooms at Bulldog Ranch to accommodate the increasing demand for educational offerings.

February and March brought further updates, including the bidding process for remodeling Ridgeland Hall. England Construction emerged as the winning bidder among seven submissions. Plans also went into motion for a jumbotron to be installed in the coliseum.

As spring approached, the college announced initiatives for summer renovations, including the remodeling of Goodman Campus dorm rooms and bathrooms in Grenada. In June, the college introduced Fiber Splicing Classes on all three campuses, marking a significant step forward in vocational training. Additionally, a \$1 million PBI Grant was awarded to support STEM initiatives and facilitate classroom updates.

By October, the completion of the new football field jumbotron was celebrated, alongside the updates made to Yazoo Hall, which included new windows and exterior painting. The college also partnered with Shackleford Equipment to offer comprehensive workforce training programs, covering fields such as Road Building Technology, Electrical Lineman Training, and Commercial Truck Driving at Bulldog Ranch.







Paul & McCrea Shelton Award Winner: Amanda Lindsey

Amanda Lindsey has spent the past 18 years at Holmes Community College, significantly impacting student life and academic success. Her ability to combine enthusiasm and organization on projects led to her selection as the Shelton Award recipient.

Lindsey's passion for the community college system began at Holmes when she was a student. She served as a Holmes Ambassador and president of the student government association (SGA) on the Ridgeland Campus.

After graduating from Holmes, Lindsey continued on to the University of Southern Mississippi (USM), where she earned a bachelor's degree in advertising with a minor in marketing in 2004. As a student at USM, she worked as a health and fitness consultant, promoting wellness and advising on the consistent application of safety procedures.

In 2005, Lindsey joined Omega Group as an executive assistant and account executive, gaining experience in marketing, promotional opportunities, TV production and creative projects.

Next, Lindsey moved into a position with the international headquarters of Phi Theta Kappa as a chapter programs assistant. Phi Theta Kappa is an international nonprofit headquartered in Jackson. In that role, she helped develop digital resources and publications that supported student chapters nationwide. Her attention to detail and commitment to excellence were vital in coordinating the Hallmark Awards Program, which recognizes outstanding student achievements and contributions to community service.

Lindsey's journey in higher education began in 2007 when she joined Holmes as the admissions secretary.

In 2009, she started working with students in the student records office and was selected as the SGA sponsor and Student Activities Coordinator. She has been instrumental in shaping the experiences of countless students, ensuring they have access to resources and opportunities that foster personal and

academic growth. In these roles, she serves as a crucial liaison between administrative functions and student engagement, developing programs that cultivate a vibrant campus culture.

"Amanda has a servant heart and is selflessly dedicated to her service to the college," said Dr. Martin, vice president of the Ridgeland Campus. "Amanda's love for Holmes goes back to her time as a Student Ambassador on the Ridgeland Campus. Her footprint as a Holmes alumna, coupled with her tenure at Holmes, has enabled her to impact the lives of thousands of students. In her personal time, you will find Amanda attending alumni weddings and celebrating those she touched while attending or working at Holmes. She is the first one to volunteer her time and energy to activities that benefit our Holmes Family and always does it with a smile. I cannot think of anyone more suited for the Paul and McCrea Shelton Award."

As she continues her work at Holmes, she is now part of the marketing and recruiting office as the recruiter for the Ridgeland Campus, ensuring her influence leaves an indelible mark on students as they choose Holmes as their institution and select their pathways for the future.

Lindsey's journey reflects a lasting commitment to fostering student success by bridging the gap between administration and engagement with grace and enthusiasm.

Lindsey and her husband, Donnie, currently reside in Flowood. As a student, Amanda attended Holmes while Donnie attended rival Hinds Community College. As fate would have it, they both landed jobs at their respective alma mater after graduating from USM. Amanda presently serves as the Holmes recruiter for the Ridgeland Campus while Donnie serves as an Academic Advisor at Hinds-Rankin Campus. Together, they enjoy their time with their dog, Livvy Lou, and exercising.



2024 Annual Foundation Golf Tournament

The Holmes Community College Development Foundation, Inc. Golf Classic was held Thursday, May 2, at Deerfield Golf Club in Madison. This annual event includes lunch, a 4 person scramble, and a social immediately following the completion of play.

Corporate/team sponsorships and hole sponsorships are the main ways the tournament raises money for the Holmes Foundation. This year, Team BankPlus won First in First Flight. The team included Ellis Harris, Sr., Ellis Harris, Jr., Jarrett Johnson and Tanner Tate. Tate was also the winner of the Longest Drive. Team HCC Football came in first for the Second Flight. The team included Carter Hankins, C.J. Johnson, Jason Kelly and Joey Merriman. Coming in first for the Third Flight was Team JH&H Architects, which included Adam Haver, Jason Humphrey, Jeff McGee and Tyler Moore. Finally, Team par-Tee-Time came in first for the Ladies Division. The team included Emily Bennett, Laura Bigbee, Reagan Dillmore and Dr. Amy Whittington. Additionally, Danny Morgan was closest to the hole for hole #12 and Gary Glazier was closest to the hole for hole #3.

Mark your calendars for the 2025 Foundation Golf Tournament to be held Thursday, May 1, at Deerfield Country Club in Canton. Registration and lunch is set for 11 a.m. with a tee time of 12 p.m.

To sponsor a hole or a prize, please contact Allison DeWeese at adeweese@holmescc.edu for more information.



Foundation Legacy Club

Legacy Club members pledge a minimum of \$1,500 annually. Private donations make the difference between a minimal level of support for teaching and faculty development and one that means an enhanced educational experience.

Anonymous

Atmos Energy

Betty Sue & Joe Adams

The Bower Foundation

Phyllis Alford

Dr. & Mrs. Sidney Bondurant

Dr. & Mrs. Edward Bryant

CF Industries

Reta & Danny Chandler

Larry Chapman

Margaret Davis

Dunn Utility Products

Maggie Garrett

Dr. & Mrs. Jim Haffey

Traci & Greg Holloway

Jack Holmes

Mr. & Mrs. David Hudson

Lillian Hunsinger

Keeton Trust

Becky & Jesse Leverette

Dr. Bronwyn P. Martin

Mary Ann Miller Estate

Metro Building Services

MS Automotive

Manufacturers Assoc.

Peggy & Wilton Neal

Jan & Chuck Putnam

Renasant Bank

Reba & Robby Robertson

Dr. & Mrs. Brady Richardson

Janice & Gene Richardson

Jeanie Kay & Robert Rose

Debbie & Frank Shaw

Paul Shelton

Daphenia & Derek Starling

Julie & Gerry Taylor

Allison & Bradley Tyler

CF Industries Foundation Scholarship Created to Benefit Students in Industry-Related Fields

CF Industries has created a Foundation Scholarship to benefit Holmes Community College students in industry-related fields.

“CF Industries Foundation is passionate about supporting charitable initiatives in local communities,” CF Industries Senior Director of Corporate Communications Chris Close said. “Given its strong presence and impact in Holmes and the surrounding counties, the CF Industries Foundation explored a scholarship program with Holmes Community College, and starting this Fall two students will be selected by the Holmes Community College Development Foundation to be recipients of the CF Industries Foundation Scholarship.”

The CF Industries Scholarship will help prepare students for careers in high-demand fields and enable them to achieve both their educational and occupational goals. The scholarship will focus on students enrolled in the following programs, among others: Agricultural Sciences, Industrial Engineering Management Technology, Industrial Maintenance Technology, and Industrial Technology. Students should demonstrate a financial need and be from a Delta County to include the counties of Madison and Hinds. Freshman students must have a minimum high school GPA of 2.5 and sophomores must maintain a GPA of 2.0.

CF Industries Foundation was

established by its corporate founder, CF Industries, in late 2022 and focuses on environmental sustainability, healthy food access, STEM education and awareness and local community advancement. CF Industries is the world’s largest producer of ammonia with a mission to provide clean energy to feed and fuel the world sustainably. CF Industries is focused on safe and reliable operations, environmental stewardship, and disciplined capital and corporate management and is on a path to decarbonize its ammonia production network – the world’s largest – to enable green and low-carbon hydrogen and nitrogen products for energy, fertilizer, emissions abatement and other industrial activities.

Foundation Awards Five Mini Grants

William Devore, Jr., Goodman Campus

Two certificate programs: Effective Teaching Practice and Effective Online Teaching Practice from the Association of College and University Educators

Justin Craft, Goodman Campus

Mallettech Mtech 5.0 Octave Marimba Instrument

Jennifer Brunson, Goodman Campus

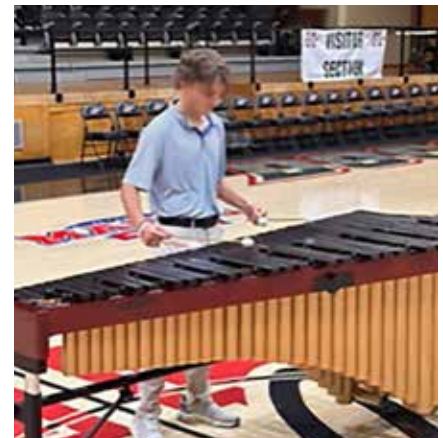
JAMF Subscription for schools; Ipad, Apple Stylus, and Case

Steve Diffey, Goodman Campus

Ipad Pro, Keyboard, and Apple Stylus

Aimee Kitching, Grenada Campus

JAMF Subscription for schools; Ipad, Apple Stylus, and Case



Alford Family Creates Scholarship

The Holmes Community College Development Foundation is pleased to announce the creation of the James Murry “Son” and Walter Alford Scholarship to benefit students from Carroll and Montgomery counties.

This scholarship was initiated by Dr. Ronald N. Hunsinger and his wife, Lillian Alford Hunsinger, to honor the lives of her brothers (James and Walter) and their service as trustees to Holmes.

Students, regardless of their Mississippi residence, must be selected on financial need, merit, and good character. This scholarship may be used in conjunction with other scholarships.

According to Lillian Hunsinger, their mother, Alva Bell Stewart Alford, attended Holmes in the late 1920s and completed necessary courses to teach in a one-room schoolhouse.

“Without someone at Holmes working to ‘make a way’ financially for the Alfords to attend Holmes, attending would have been impossible.”

After graduating from Vaiden High School, James was next to attend Holmes. He graduated in 1959 before going to Delta State University, where he received a math degree and returned to Vaiden High School to teach. While teaching, he also received a master’s degree and an education specialist degree from Mississippi State University. He later became the Superintendent of Education of the Carroll County School System. While superintendent, he joined the Holmes Board of Trustees where he served for more than 35 years.

Walter also attended Vaiden High School and came to Holmes out of



high school, graduating in 1967. After Holmes, he received a bachelor’s degree, a master’s degree and other post graduate work from Mississippi State University. He worked as Extension Agent for Carroll and Montgomery Counties before being named District Director for Southwest Mississippi and retired as Assistant Director for the Mississippi State Extension Service. He has served as a trustee for Holmes for more than 40 years and currently serves as president of the board and as a member of the Development Foundation Board of Directors.

Their late brother, Jerry, attended Holmes prior to being drafted in the Army in 1970. Upon returning from the Vietnam War, he began a successful business building custom homes.

Lillian was next to attend Holmes after high school and graduated in 1972 and was the last of seven Alford siblings. She received a bachelor’s and master’s degree from Mississippi State University and an education specialist degree from Samford University in Birmingham. She served as a school principal and administrator for the Jefferson County School System in Birmingham for 20 years and retired as Director of Curriculum and Instruction for the 58 schools in Jefferson County.

Her husband, Ronald, also attended Holmes for one year before completing his bachelor’s and master’s degrees from Mississippi State University. He then received his Ph.D in Pharmacology and Toxicology at Ole Miss before accepting a post graduate fellowship in Biochemistry at UAB School of Medicine and retired after serving for 31 years as a full professor and administrator at Samford.

“Without someone at Holmes working to ‘make a way’ financially for the Alfords to attend Holmes, attending would have been impossible,” Lillian Hunsinger said. “We grew up in poverty and needed any financial assistance available. We all used the Work Study Program, scholarships, grants, and any other available funds. As a result, we are all successful contributing members of our communities and states as a result of our education and pivotal support given to us by Holmes.”

The James Murry (Son) and Walter Alford Scholarship is open to gifts from persons, estates, and organizations. To donate to the James Murry (Son) and Walter Alford Scholarship, please send donations to the Holmes Development Foundation, P.O. Box 527, Goodman, MS 39079.

Dunn Utility Products Creates Scholarship for CTE Students

The Holmes Community College Development Foundation is grateful for the creation of the Dunn Utility Products Scholarship to benefit career-technical students at Holmes.

The patronage scholarship should be awarded to full-time students pursuing a technical education certificate or degree in a manufacturing related field. The student should have and maintain a 2.0 GPA with preference being given to students participating in internships with Dunn Utility Products.

Dunn was established in 1878 and has multiple companies across the Southeast including MMC Materials, Bayou Concrete, Dunn Road Builders, Dunn Construction, Dunn Real Estate, Civil Contractors, West TN Readymix, Huey P Stockstill, and Dunn Utility Products as the newest company being established in 2019 with operations in Byram and New Albany.

“The intent is to provide an opportunity for a student who may otherwise experience a hardship or for someone who shows interest in a career in the technology/manufacturing industries,” said Dunn’s Mark McCormick, who is a Winona High School, Holmes Community College and Mississippi State University graduate (industrial technology). He started working at MMC Materials in 2000.

“We chose Holmes CC for their Industrial Technology programs and their commitment to prepare students with the skills they need for tomorrow’s workforce,” said McCormick.

The Dunn Utility Products Scholarship is open to gifts from persons, estates, and organizations. To donate to this Scholarship, please send donations to the Holmes Development Foundation, P.O. Box 527, Goodman, MS 39079.



Derek Starling Family Creates Scholarship for Canton HS Grads

Derek Starling, a past president of the Holmes Community College Alumni Association, and his wife, Daphenia, are establishing a scholarship at Holmes to return what the college provided to their whole family.



Starling, his mother Alma (whom completed some continuing education classes), his brother Dwayne ('84) and sister Dianna ('80) all attended Holmes and are grateful to Holmes for jump starting their success in life.

A graduate of Canton High School, Starling came to Holmes as a student athlete. He played men’s varsity basketball under Coach Bennie Kimble from 1984-1986.

Upon graduation from Holmes, he attended Mississippi State University and earned his bachelor’s in industrial and systems engineering with a minor in mathematics. He is now the owner and principal of SOL Engineering Services, headquartered in Jackson.

Some of Starling’s success have been: Small Business Administration’s Mississippi Business Person of the Year (2015); serving on the Canton School Board for 17 years, eight of which he served as chairman; MSU Department of Industrial & System Engineering Advisory Board member (2018-present); inducted as a Fellow into the Society of American Military Engineers (2022) and lifetime member of the Holmes Alumni Association.

In 2017, he was inducted into the Holmes Sports Hall of Fame for his basketball accomplishments, then in 2022, was recognized the Alumni Association as Alumnus of the Year.

The Starling family is excited about helping students at Holmes through this scholarship. The Daphenia and Derek Starling Family Scholarship will be for a graduate of Canton High School majoring in a STEM field. The student must be enrolled full-time and maintain a 2.5 grade-point-average.”

“We wanted to do a scholarship because Holmes invested into me with a scholarship that allowed me to afford college,” Starling said. “My scholarship was the beginning of my preparation for lifelong learning and we want to give other deserving students that same opportunity.

For more information about how to give to Holmes or establish a scholarship, please contact the Holmes Development Foundation 662-472-9017.

ESTABLISHED SCHOLARSHIPS



Power 9 Foundation Scholarship

Holmes CC is proud to announce the establishment of the “Power 9” scholarship, designed to support students from the nine counties within its district: Attala, Carroll, Choctaw, Grenada, Madison, Montgomery, Webster, Yazoo, and Holmes. This scholarship is awarded to any eligible student who maintains a minimum GPA of 2.7, providing an opportunity for local talent to pursue their educational goals while contributing to the community’s growth and development. The scholarship has been initiated by the reunion group of students from 1975-1980, who have been gathering each July for the past five years (pictured above).

Their annual meeting will be July 19 in Goodman, where members will continue their commitment of giving back to the community through this scholarship initiative.

For further giving opportunities, contact Foundation Executive Director Dr. Lindy McCain at lmccain@holmescc.edu or call (662) 472-9067 or visit holmescc.edu/developmentfoundation.

Metro Building Services Creates Scholarship for CTE Students

The Holmes Community College Development Foundation is pleased to announce the creation of the Metro Building Services Scholarship to benefit career-technical students at Holmes CC.

The patronage scholarship should be awarded to full-time students enrolled either in the welding or HVAC programs. The student should have and maintain a 2.0 GPA.

“Metro strives to help build the up-and-coming workforce programs, and feels it to be a positive note to support these young people how we can,” said Travis Burrell, Director of Service Operations for Metro Building Services, LLC. Metro has three locations in Bolton, Hattiesburg and Hammond, LA with plumbing, electrical, controls, welding, and sheet metal divisions.

Burrell, who resides in Goodman and has been with Metro for 27 years, has many family members who attended Holmes. His daughter is a recent graduate of the cosmetology program, and his brother got his degree in HVAC from Holmes.

“Metro wants a deserving student that plans on making a career in HVAC and has a good work ethic and a respectful GPA to receive our scholarships,” Burrell said. “Metro has multiple young employees from Holmes and Hinds HVAC courses on staff, and we plan on continuing to hire young and train them for their future in this field with an opportunity to join a family they can retire with.”

The Metro Building Services Scholarship is open to gifts from persons, estates, and organizations. To donate to the Metro Building Services Scholarship, please send donations to the HCC Development Foundation, P.O. Box 527, Goodman, MS 39079.

Foundation Annual Giving Donors

Thank you to these generous donors. We could not fulfill our mission without you!

HOLMES SOCIETY

\$1,000,000 +

PRESIDENT'S SOCIETY

\$500,000-\$999,999

LOYALTY CLUB

\$250,000-\$499,999

Keeton Trust

BULLDOG CLUB

\$100,000-\$249,999

GRAND BENEFACTOR

\$50,000-\$99,999

BENEFACTOR

\$25,000-\$49,999

PLATINUM LEVEL

\$10,000-\$24,999

Anonymous

Dr. & Mrs. Sidney Bondurant

Mr. & Mrs. Greg Holloway

Mary Ann Miller Estate

Renasant Bank

Daphenia & Derek Starling

The Bower Foundation

GOLD LEVEL

\$5,000-\$9,999

CF Industries

Dunn Utility Products

Theresa Rosamond Johnson
Estate

Dr. & Mrs. Jim Haffey

Lillian Hunsinger

Jan & Chuck Putnam

Reba & Robby Robertson

Julie & Gerry Taylor

SILVER LEVEL

\$2,500-\$4,999

Phyllis Alford

Atmos Energy

Larry Chapman

PATRON

\$1,000-\$2,499

Aladdin Food Management
Services, LLC

Betty Sue & Joe Adams

Bank of Kilmichael

Dr. & Mrs. Greg Browning

Dr. & Mrs. Edward Bryant

Reta & Danny Chandler

Tess Thomas Crenshaw

Culpepper Funeral Services

Margaret Davis

Maggie Garrett

Dr. Lily Francesca Guastella

Jack Holmes

Mr. & Mrs. David Hudson

Becky & Jesse Leverette

Gladys Lewis

Dr. Bronwyn P. Martin

Metro Building Services

MS Automotive

Manufacturers Assoc.

Ann E. Montgomery

M.K. Montgomery

Peggy & Wilton Neal

Randy Turner Painting

Dr. & Mrs. Brady Richardson

Jeanie Kay & Robert Rose

Debbie & Frank Shaw

Paul Shelton

Mary Beth Taylor

Dr. Amy & Mr. Frank

Whittington

Mrs. Samantha & Dr. Mack

Woo

FRIEND

\$500-\$999

Dr. & Mrs. Jan W. Bailey

Bank Plus

Ryan Beggs

Sherry & Stephen Cheek

Class of 1975-1980 Reunion
Group

Howard Industries, INC

Ion Business Concepts &

Payment Systems, LLC

Ivey Mechanical Company

Jackson Web Works

JH&H Architects

Mr. & Mrs. Bill Johnson

Lee Johnson

Dr. Jenny Bailey Jones

Kroger

MedScreens, Inc.

Mitchell Metal Products

Paint Plus Construction, LLC

Premier Medical Group of MS

Scarborough Building Supply

Shields Drugs, INC.

George Slocum

Tish Stewart

Betty & Dan Stokes

Trinity Title Abstract, LLC

Dr. Lynn & Mr. Elton Wright

SUPPORTER

\$1-\$499

Cynthia Abel

Lisa Anglin

Sonja Arnett

Dr. & Mrs. Tim Alford

Jimmy Atwood

Dr. Alice Austin

Lilly Austin

Kate Barton

Mr. Walter D. Becker, Jr.

Mary Belk

Jennifer Bertucci

Stephanie Bilski

Mrs. Lee C. Bizzell

Dr. Christi Blair

Stephanie Blue

Morgan Bondurant

Cindy Bridges

Anna Brittain

Julia Brown

Ashley Broyles

Jennifer Brunson

Candice Buchanan

Michelle Burney

Dr. Don Burnham

Mandy Burrell

Dr. Michelle Burrell

Sara Burwell

Mr. & Mrs. Howard Butler

Tammy Caldwell

Terri Caruthers

Hollee & Taylor Casey

Cengage

Ira Chadick, III

Stephanie Chambley

Jay Cheatham

Sarah Cheek

Kaitlyn Chunn

Arletha Coffey

Kristina Collier Rodela

Tammy Collins

Matt Convertino

Yvonne Cook

Stacey Coulter

Tiffany Cox

Michelle Crawford

Crestview Congregational

Brandy Culpepper

Cathy Cummings

Madison Cummins

Michelle Dancy

Kristin Daniels

Anna Davenport

DCH Shelter, LLC

Audra Love Dean

Lauren Dees

Delta Electric Power Assoc.

Allison DeWeese

Brittni Dickerson

Steve Diffey

Reagan Dilmore

Faye Dillard ►

ANNUAL GIVING

Brenda Dorris
 Darleen Dozier
 Eat Local, INC
 Martin Eckleberry
 Jonnie Edwards
 Mr. & Mrs. Samuel B. Ellard
 Brittany Engle
 Nathan Ewell
 Mr. & Mrs. Charles Ewing
 FBC Youth Sunday School
 Teachers
 Jean & Eddie Fenwick
 Bill Fitts
 Kim Fowler
 Dr. Amy W. Freeze
 Tina Garrett
 Deandra Gibson
 Bill Grace
 Wendy Grace
 Cathy & Howard Grantham
 Grappin Construction
 Greenoak Nursery, INC
 Beth & Stanley Hartness
 Debbie Harville
 Lindsey Harville
 Myra Harville
 Lynda & David Hatchett
 Mr. & Mrs. Wirt Hayes
 Bobbie McFarling
 J.R. Hall
 Terrell Hammett
 Clate Holleman
 Holmes County Bank
 Jacob Hood
 Gabrielle Hopkins
 Mr. & Mrs. Danny Howell
 Matt Hudson
 Rhonda Jeffcoat
 Erin Jenkins
 Na Tunya Johnson
 Wilma Johnson
 Amanda Jones
 David Jones
 Heather Jones
 Dr. Luke Jones
 Patty Jones
 Stephanie Jones
 Debbie & Bob Jordan
 Keifer's Madison, LLC

Joy Kellum
 Erin & Robert Kiker
 Dr. Amy Land
 Dr. Tonya Lawrence
 Susan & James Lazenby
 Lee Mechanical Solutions, INC
 Jessica Lepard
 Kevin Lepard
 LaShonda Levy
 Ben Lewis
 Amy Lindsay
 Trent Little
 Alvin Loewenberg Jr.
 Gwen Lordeon
 Shirley & John Love
 Amber Mabus
 Nancy Mason
 Angel Albin McDonald
 Dr. Lindy McCain
 Marshall McCain
 Bobbie McFarling
 Vivian McGee
 Jennifer McGehee
 Jacqueline Meek
 Brenda Melton
 Ginger Meriwether
 Bethany Miller
 Simonee Miller
 Chelsea Mims
 W.A. Mitchell
 Lucia Vern Modlin
 Heather Mooney
 Ethel Moore
 Rachelle Moore
 MVSU Alumni Chapter of
 Holmes County
 Katrina Myricks
 Josephine Neill-Browning
 New Century Book Club
 Dana Nichols
 Linda Nichols
 Office Products Plus
 Virginia & Roy Oliver
 Jovonna Parker
 Nancy Parkerson
 Michael Pawlik
 Arnetra Pleas
 Sara Pollan
 Heather Pounds

Barbara & Paul Powers
 Precision Turf Care
 Pullen Windows & Doors
 Larry Randle
 Cindy & Al Ray
 Chloe Reed
 Edris Ricks
 Ripley High School
 Football Boosters
 Heather Rozier
 Scott Pitts
 Maurin Savage
 Wanda Seals
 Rosemary Self
 Shamrock Sales, LLC
 John Shaw
 Shelby Sones
 Sonny Sparks
 Leslie Spell
 State Farm Insurance
 Margie & Spence Stork
 Sunray Spa LLC
 Dr. Matt Surrell
 Danette Tannehill
 Stephanie Thrasher
 Steven Tiller
 Sandra Townes
 Alicia Turner
 Lacy Walker
 Xiaoying Wang
 Sally Wasson
 Mallory Weeks
 Casey Welch
 Mike West
 Lynn B. Wiggers
 Angie Williams
 Andy Wood
 Charles Wood
 Heather Wood
 Marcus Wood
 Stephanie Wood
 YiaYia's Kitchen

Frank C. Bailey
 Dr. & Mrs. Tim Alford
 Jimmy Atwood
 Dr. & Mrs. Jan W. Bailey
 Mr. Walter D. Becker, Jr.
 Mrs. Lee C. Bizzell
 Dr. & Mrs. Greg Browning
 Hollee & Taylor Casey
 Ira Chadick, III
 Sherry & Stephen Cheek
 Sarah Cheek
 Yvonne Cook
 DCH Shelter, LLC
 Mr. & Mrs. Samuel B. Ellard
 Mr. & Mrs. Charles Ewing
 FBC Sunday School Teachers
 Dr. Jim Haffey
 Jean & Eddie Fenwick
 Beth & Stanley Hartness
 Mrs. Lynda & Mr. David
 Hatchett
 Mr. & Mrs. Danny Howell
 Cyndi Jordan
 Debbie & Bob Jordan
 Sara Beth Jordan
 Mr. & Mrs. James Lazenby
 Alvin Loewenberg Jr.
 Shirley & John Love
 Dr. Lindy McCain
 W.A. Mitchell
 Lucia Vern Modlin
 Virginia & Roy Oliver
 Barbara & Paul Powers
 Cindy & Al Ray
 John Shaw
 Margie & Spence Stork
 Dr. Matt Surrell
 Twenty-First Century Club
 Sally Wasson
 Lynn B. Wiggers

Glen Beard, Sr.
 Dr. Jim Haffey

Fred Allen Bell
 Audra Love Dean

Timmy Boatner
 Maggie Garrett

Memorials

Margie Ables
 Bill Alexander
 Dr. Jim Haffey



Frank Bailey of Kosciusko, was a local businessman and sportsman, operating Companion Vans, Inc., a custom van conversion business with offices in both McGregor, TX and Kosciusko, MS. He was survived by his wife, Sissy, of 55 years as well as two loving daughters, Jenny Bailey Jones (William) and Kelly Bailey Powers (Jonathan). His memorials contributed to the West Bailey Memorial Scholarship with the Holmes Foundation in memory of his beloved nephew.

Clara Ann Bufkin

Maggie Garrett

Lee Burrell

Reba & Robby Robertson

Mollie Haffey Caldwell

Sherry & Stephen Cheek
Margaret Davis
Jonnie Edwards
Maggie Garrett
Mr. & Mrs. Danny Howell
Dr. Jenny Bailey Jones
Debbie & Bob Jordan
Dr. Bronwyn P. Martin
Dr. Lindy McCain
Reba & Robby Robertson
Tish Stewart

Sandra Carr

Maggie Garrett

Dwayne Cochran

Maggie Garrett

Joe Doty

Maggie Garrett

Melvin Dumas

Mandy Burrell
Kim Fowler

Irene Floyd

Maggie Garrett

Diane Garrett

Maggie Garrett

Mary Ann Grantham

Maggie Garrett

William Harris

Maggie Garrett

Kitty Jones

Maggie Garrett

Margaret Keeton

Dr. Jim Haffey
Dr. Lindy McCain
New Century Book Club

Bennie Kimble

Dr. Jim Haffey
Mr. & Mrs. Wirt Hayes
Dr. Lindy McCain

Charles Liles

Wilma Johnson
Stephanie Jones
Erin & Robert Kiker
Dr. Lindy McCain
Ripley High School
Football Boosters

Bobby Lindsay

Maggie Garrett

Billy May

Maggie Garrett

Charles McBride

Reba & Robby Robertson

Patrice McCrory

Maggie Garrett

Sue Wood McKay

New Century Book Club

Lauren Moore

Mr. & Mrs. Samuel B. Ellard
Dr. Jim Haffey

Ralph Morris

Maggie Garrett

Billie Jean McCrory Nance

Maggie Garrett
Kevin Lepard

Larry Pickle

Maggie Garrett

Anne Porter

Maggie Garrett

Fred Ray

Maggie Garrett
Dr. Jim Haffey
Dr. Lindy McCain

Patsy Rogers

Sherry & Stephen Cheek
Maggie Garrett
Dr. Jim Haffey
Gladys Lewis

Charles Shaw

Maggie Garrett
Dr. Jim Haffey
Dr. Lindy McCain

McRea Shelton

Sherry & Stephen Cheek
Larry Randle

B.J. Swafford

Audra Love Dean

Brooke Walker

Ashley Broyles
Frank Edwards
Brittany Engle
Justin Ferguson
Dr. Jim Haffey
Erin Jenkins
Dr. Lindy McCain
Brenda Melton
Chloe Reed
Natalie Smith
Stephanie Thrasher
Doris Webb and Family

Honorariums

Tim Alford

Phyllis Alford
Lillian Hunsinger

James Alford

Phyllis Alford
Lillian Hunsinger

Tommy Garrett

Maggie Garrett

Bobby Garrett

Maggie Garrett

Sammy Yates

Dr. Jim Haffey

Bequests & Trusts

Anonymous

*Mrs. Freda B. Harper
Billie Joyce & Robert Poole*

Foundation Scholarship Recipients

The Holmes Development Foundation oversees Endowment and Patronage Scholarships that are awarded to students majoring in specific disciplines. Award amounts and criteria varies. Here are the scholarship recipients for 2024-2025.



Indya Adams
Renasant Bank
Completion Scholarship



Aiden Adcock
Providence Cooperative
Farm Scholarship



Caden Alexander
Renasant Bank
Completion Scholarship



Ruobing Alford
Renasant Bank
Completion Scholarship



Shecorey Allen
Bain & Corey
Scholarship



Michael L. Allen
The Maryann Miller
Endowment Trust Scholarship



Alexis Arrington
Renasant Bank
Completion Scholarship



Wes Bishop
Metro Building
Services Scholarship



Keldri Bowman
Anonymous
Scholarship



Payton Brady
Ronald "Ronnie" K. Thomas
Memorial Scholarship



Erica Brewer
Lottie Ruth Vint, R.N. & William A.
Vint, M.D. Scholarship



Diamond Brown
Lottie Ruth Vint, R.N. & William A.
Vint, M.D. Scholarship



Kaitlyn Broyles
The Maryann Miller
Endowment Trust Scholarship



Kasharria Bush
James M. Robertson, Jr.
Memorial Scholarship



Frenesha Calcote
Lottie Ruth Vint, R.N. & William A.
Vint, M.D. Scholarship



Elijah Carr
Burnis T. & Clytice Robertson
Gardner Scholarship



William Chesteen

Carl Johnson
Memorial Scholarship



Charity Clark

Lottie Ruth Vint, R.N. & William A.
Vint, M.D. Scholarship



Natalie Cochran

Anonymous
Scholarship



Kenzie Cochran

The McCrory Holmes
Milestone Scholarship



Taylor Cook

The Maryann Miller
Endowment Trust Scholarship



Emma Cotton

The Paul & McCrea
Shelton Scholarship



Kaleb Daniels

James M. Robertson, Jr.
Memorial Scholarship



William Davis

The Maryann Miller
Endowment Trust Scholarship



Noah Dean

Gibson Family
Scholarship



Anna Diffey

Renasant Bank
Completion Scholarship



Aleia Dye-Holland

James M. Robertson, Jr.
Memorial Scholarship



Lily Edge

BellSouth Endowed
Scholarship



Cayton Edwards

Renasant Bank
Completion Scholarship



Robert Estes

CF Industries
Foundation Scholarship



Shacuria Evans

Renasant Bank
Completion Scholarship



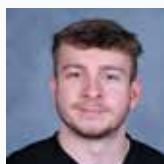
Taylor Fant

Clark Faulkner
Memorial Scholarship



Carly Flautt

James M. Robertson, Jr.
Memorial Scholarship



Jacob Franklin

James M. Robertson, Jr.
Memorial Scholarship



Savannah Fulgham

Millennial Teaching
Fellowship



Tahna Gallion

Francine Chandler Early
Childhood Education Scholarship

64%
*Of Holmes'
students
come from
our district.*

*We are working to
keep our brightest
students here in
our communities.*





Matthew Galloway

Dunn Freshman
Scholarship



William Gammel

William Brian Risher
Memorial Scholarship



Drew Grace

Bill Bunch
Memorial Scholarship



Ke'Juan Greer

The Industrial Company
Welding Scholarship



Fisher Gullede

CF Industries
Foundation Scholarship



Hudson Haffey

Thomas Vernon
Donald, Jr. Scholarship



Riley Hancock

Renasant Bank
Completion Scholarship



Moleyia Harmon

The Maryann Miller
Endowment Trust Scholarship



Caleigh Hawes

Jan & Chuck Putnam
Scholarship



Alexis Haynes

Renasant Bank
Completion Scholarship



Ella Hendry

Anonymous Scholarship and
Pepsi Bottling Company
Scholarship



Colton Howell

Burnis T. & Clytice Robertson
Gardner Scholarship



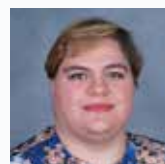
Taylor Irby

Renasant Bank
Completion Scholarship



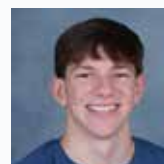
Bracie Jamison

Renasant Bank
Completion Scholarship



Ashley Johnson

Anonymous
Scholarship



Sterling Johnson

Anonymous
Scholarship



Adriana Johnson

Renasant Bank
Completion Scholarship



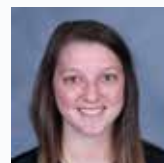
Lillie Kate Jones

Burnis T. & Clytice Robertson
Gardner Scholarship



Tiara Jones

James M. Robertson, Jr.
Memorial Scholarship



Kayla King

James M. Robertson, Jr.
Memorial Scholarship



Shakeera King
Patricia Liles
Memorial Scholarship



Kathryn Lack
Ronald "Ronnie" K. Thomas
Memorial Scholarship



Madyson Leach
James M. Robertson, Jr.
Memorial Scholarship



Eli Lewis
Anonymous
Scholarship



Joseph Lindley
James M. Robertson, Jr.
Memorial Scholarship



Kimberly Love
F.C. & Annie P. Dailey Memorial
Nursing Scholarship



Grayson Marshall
Renasant Bank
Completion Scholarship



Helga Matthews
Dr. L. C. Henson
Scholarship



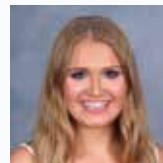
Cailey McBride
Bobby Garrett
Memorial Scholarship



Cooper McDaniel
Belk Family
Scholarship



Miranda McDaniel
The Maryann Miller
Endowment Trust Scholarship



Marla McKnight
Ben Branch
Memorial Scholarship



Janey Beth McRae
Dr. L. C. Henson
Scholarship



Madison Moore
The Daphenia & Derek
Starling Family Scholarship



Jennifer Mosley-Abustan
Lottie Ruth Vint, R.N. & William A.
Vint, M.D. Scholarship



Caitlin Mullins
Renasant Bank
Completion Scholarship



Lawson Nichols
West Bailey
Memorial Scholarship



Cody Nicholson
Metro Building
Services Scholarship



Gibson Parish
Dunn Utility Products Scholarship
and Mississippi Automotive
Manufacturers' Association
Chairmen's Award



Kay Louise Purvis
Burnis T. & Clytice Robertson
Gardner Scholarship

Holmes'
online
alumni
commu-
nity has
nearly
10,000
members.

Join them today
by scanning the
code to visit our
360Alumni website.





Benjamin Ransom, III

W & M Thomas
STEM Scholarship



Harley Grace Rayburn

Burnis T. & Clytice Robertson
Gardner Scholarship



Abigail Redwine

Bondurant Family
Scholarship



Meri Brynn Reeves

Renasant Bank
Completion Scholarship



Dy'lan Roberson

Belk Family
Scholarship



Cammie Roberts

James M. Robertson, Jr.
Memorial Scholarship



Jatarrius Roundtree

The Industrial Company
Welding Scholarship



Caleb Saxton

The Maryann Miller
Endowment Trust Scholarship



Joshua Saxton

The Maryann Miller
Endowment Trust Scholarship



Casen Shurden

Charles B. Holder
Scholarship



Paul Simpson

Nailer's Next Ride
Scholarship



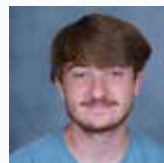
Zakiriah Sizemore

James M. Robertson, Jr.
Memorial Scholarship



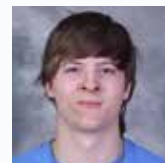
Monica Smith

The Maryann Miller
Endowment Trust Scholarship



Cooper Sparks

Anonymous
Scholarship



Tyler Speight

The Industrial Company
Welding Scholarship



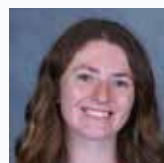
Mickaeya Spencer

James M. Robertson, Jr.
Memorial Scholarship



Kayla Standrod

Lottie Ruth Vint, R.N. & William A.
Vint, M.D. Scholarship



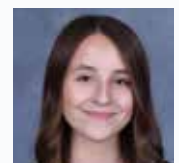
Savanna Staszefski

Keeton
Scholarship



Maggie Steed

Dale Lewis
Memorial Scholarship



Chloe Tharp

Keeton
Scholarship

\$30,000

*The amount
awarded
annually in
mini-grants
to directly
support
classroom
needs.*





Megan Tipton

Providence Cooperative
Farm Scholarship



Sarah Todd

James M. Robertson, Jr.
Memorial Scholarship



Jordan Turner

Lottie Ruth Vint, R.N. & William A.
Vint, M.D. Scholarship



Christian Turner

The Industrial Company
Welding Scholarship



Mary Faith Vance

Frank B. Branch
Memorial Scholarship



Asia Wade

Ryan James & Gail Muse
Beggs Scholarship



Madison West

Jan & Chuck
Putnam Scholarship



Alexandra West

Providence Cooperative
Farm Scholarship



Allie Grace Whitaker

James M. Robertson, Jr.
Memorial Scholarship



Kiara Williams

Renasant Bank
Completion Scholarship



**Adrienne Williams
Townsend**

Rosie L. Small Gregory
Memorial Scholarship



Kendall Williamson

The Maryann Miller
Endowment Trust Scholarship



Mason Wiysel

The Maryann Miller
Endowment Trust Scholarship



Lane Womack

Anonymous
Scholarship



Kayla Woodson

Lottie Ruth Vint, R.N. & William A.
Vint, M.D. Scholarship



Lilly Clair Word

Anonymous
Scholarship



John Hudson Word

Bobby & Joann
Killebrew Scholarship



Sunnee Young

Anonymous
Scholarship



Brent Zachery

The Maryann Miller
Endowment Trust Scholarship



Alicia Zollicoffer

Johnny & Elizabeth
Belk Scholarship



*121 Holmes
employees
give back to
the college,
donating
nearly
\$30,000
annually.*

Current Giving Opportunities



The STEM Major Project

Developed by Holmes to renovate STEM facilities with cutting-edge technology while incorporating activities and programs to promote STEM awareness, enrollment, and degree completion.



Purchase a Holmes Vehicle Tag

Show your pride wherever you drive! The Holmes Community College Development Foundation has launched a new opportunity for Mississippi residents, especially alumni, employees, and friends, to show their support of Holmes through their daily travels.



NEW! Donate to the Foundation via Venmo

It is now easier than ever to donate to the Holmes CC Foundation using Venmo! Transfer funds by using the app on your phone, or by going to our Venmo page.



Kroger Community Rewards

If you have not already indicated an organization for Community Rewards through Kroger, we would love for you to choose Holmes. It is easy to enroll through your Kroger account. Once you sign into your account, all you need to do to enroll is enter our code: **MW962** for The Holmes Community College Development Foundation.



Join the Alumni 360 Online Community

Introducing Alumni 360, Holmes' new online alumni community. Scan the QR code to join. Through this software, you can find other alumni, stay in the know with Holmes events, campaigns, and even promote your business! Spread the word to your fellow alumni!



Purchase a Chapel Courtyard Brick

We invite you to add your personal touch to the chapel on the Hill on the Goodman Campus. You can purchase a customized paver to celebrate a graduation or milestone, honor a classmate, family member, or influential person in your life, while creating a meaningful reminder of your affection for Holmes.



Holmes Community College does not discriminate on the basis of race, color, religion, national origin, sex, age, disability or genetic information in its educational programs and activities, employment practices, or admissions processes. The following administrators have been designated to handle inquiries regarding the non-discrimination policies of Holmes Community College:

Inquiries regarding compliance with Title VI, ADEA, and Title IX are coordinated by the Vice President for Compliance and Institutional Research, Henry B. McClellan Administration Building, Post Office Box 369, Goodman, MS 39079, Phone: 662-472-9429, compliance@holmescc.edu.

Inquiries regarding compliance with Section 504 and ADA are coordinated by the Disability Student Services Coordinator, M.R. Thorne Vocational-Technical Building, Room 110, Post Office Box 369, Goodman, MS 39079, Phone: 662-472-9088, disabilitysupportservices@holmescc.edu.