

The Foundation

Report



A PUBLICATION OF THE
HOLMES COMMUNITY COLLEGE
DEVELOPMENT FOUNDATION

2023

The Foundation Report

The Foundation Report is the official publication of the Holmes Community College Development Foundation, published by Holmes' Development Foundation.



FEATURES

6 **Dr. Mackey Honored by American Cancer Society**

Dr. Teresa Mackey has been named a 2022 Honoree for the American Cancer Society.

8 **Niche.com Names Holmes #1 in MS**

Niche recently named HCC Mississippi's 2023 #1 Community College.

9 **Dr. Lawrence Receives Shelton Award**

Dr. Tonya Lawrence has been recognized for her outstanding commitment to Holmes.

10 **No Guy Like Holmes**

Jack Holmes has led teams, soldiers, classrooms, and campuses. His wit and will to win have inspired generations of Holmes students and employees.

28 **In the Wake of the Storm**

The Goodman Campus was rocked by the tornado on March 22, 2022.

IN THIS ISSUE

- 2 From the College President
- 2 Foundation Board of Governors
- 3 Foundation Board of Directors
- 4 From the Foundation President
- 5 Development Foundation Staff
- 5 Alumni Association Officers
- 6 Dr. Mackey Honored
- 8 Niche Names Holmes #1
- 9 Shelton Award Recipient
- 10 On the Cover: Jack Holmes
- 14 Annual Giving Donors
- 15 Mini-Grants
- 16 Legacy Club
- 17 Memorials & Honorariums
- 17 Bequests & Trusts
- 18 Newly Established Scholarships
- 18 Chapel Courtyard Bricks
- 19 Better Bulldog Program
- 20 Scholarship Recipients
- 25 Foundation Golf Tournament
- 26 Athletics Facility Upgrades
- 28 In the Wake of the Storm
- BC Current Giving Opportunities

First Day Vibes: The excitement is visible for these students visiting Holmes' Freshman Friday event—an "all-hands-on-deck" day held each spring dedicated to assisting incoming freshmen.



McDANIEL HALL

No
Place
Like
Holmes!



Board of Governors

Attala County

Johnny Belk
Doris Belk
Wirt Hayes
Jack Holmes
Rev. Gene Richardson
Dr. Brady Richardson
Robby Robertson
Frank Shaw, Jr.
Austin Taylor
Carolyn Thomas

Carroll County

Wilton Neal
Josephine Neil-Browning

Choctaw County

William Strawbridge
Ben Tharp

Grenada County

Paul McCarley

Holmes County

Maggie Garrett
Dale McBride
Dr. Lynn & Elton Wright

Madison County

Betty Sue & Joe Adams
Danny Chandler
Becky & Jesse Leverette
Dr. Sam Massey
Derek Starling
John Wallace
Tommy Worthey

Montgomery County

Eugenia Collins
Margaret Harris

Webster County

Hugh Gibson
Jan & Chuck Putnam

Yazoo County

Jim Golden

Out of District

Jack McDaniel (Hinds)
Dr. J. L. Peoples (Oktibbeha)
Martha & Fred Ray (Hinds)

From the College President

Dear Holmes Family,

No Place Like Holmes!...Over the years, this has become our tagline. We use it to sign off on our emails, letters, and radio advertisements. What does it mean for students, staff, alumni, and community? To us, it means that when you encounter someone or something at Holmes, you are being treated unique. You are working with an institution that wants to look differently at every possible way to solve a problem for you, and to make your life and your community better. Decades down the road, we want you to be able to vividly recall how your experience with Holmes was special.



Our Foundation is a critical piece of that experience for our constituents. For many, it is a scholarship that helps plug the gap and puts enough gas in vehicles to make it to class while working part-time. For others, it is a special plaque at retirement, a ring for a state championship, a memorial at Christmas, or flowers sent at the passing of a relative. Our Foundation softens our institution from a place where great careers are made into a family that cares for its students and staff.

As a state institution, we are often limited by what we may spend funds supporting. Our Foundation allows us to bridge those gaps and provide caring, personal help to those that need it most. We like to pride ourselves on being practical stewards of your generous donations. We have the lowest administrative costs in the nation, and where others spend millions of foundation dollars on inflated coaches' salaries and NIL deals, we choose to make sure your dollars make a difference in the lives of hard-working Mississippians that will become future leaders and citizens of our great state.

We humbly ask you to consider Holmes for your gifting, and we pledge to live up to our mantra that there is No Place Like Holmes!

Sincerely,

Jim Haffey, Ph.D.
President, Homes Community College
Class of 1996

Foundation Board of Directors

Elected Members

Jesse Leverette (P)
Dr. Brady Richardson (VP)
Wirt Hayes (T)
Doris Belk (S)
Wilton Neal
Rev. Gene Richardson
Robby Robertson
Austin Taylor
Joe Adams
Ben Tharp
Johnny Belk
John Wallace
Dr. Lynn Wright
Eugenia Collins
Jack Holmes

Ex-Officio Members

Dr. Jim Haffey, HCC President (voting member)
Dr. Lindy McCain, Foundation Executive Director
Walter Alford, HCC Board of Trustees President (voting member)
Jacob Black, Alumni Association President
Sonny Sparks, HCC Executive Vice President for Financial Services
Dr. Don Burnham, HCC Vice President Ridgeland Campus
Dr. Michelle Burney, HCC Vice President Grenada Campus
Brittini Dickerson, Assistant Secretary & Treasurer
Katherine Ellard, Coord. of Alumni Affairs/Public Relations Specialist

The Foundation is governed by an 18-member Board of Directors, who annually elect officers from its membership. In addition, there is a Foundation Board of Governors with representation from the nine counties served by the college.

Audit Committee

Wirt Hayes, Fred Ray, and Robby Robertson

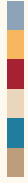
Investment Committee

John Wallace
Doris Belk
Jesse Leverette (per By-laws)
Wirt Hayes (per By-laws)
Dale McBride, Chair

Nominating Committee

Jack Holmes, Chair, Wilton Neal, and Dr. Brady Richardson





From the Foundation President

What an exciting year at Holmes CC! Thanks to everyone who contributed to the unprecedented growth and development at all the College locations. Dr. Haffey and the dedicated team at HCC continue to amaze us with new improvements to expand educational opportunities for students from all walks of life. The list of past improvements and accomplishments in 2022 is endless.



The storm damage to the Goodman Campus was extensive. The 110 mph winds destroyed or damaged buildings, trees, 40 to 50 roofs on campus and close to 100 car windows were blown out. The students were safe on campus, with no major injuries reported. The HCC response crews started cleaning up immediately, rebuilding and improving all campus facilities. What a huge project and a remarkable job! The educational heartbeat at HCC did not miss a beat.

When you visit the campuses, you will see dramatic new changes. Repairs and improvements of athletic facilities, new turf fields, a new jumbotron, and a new soccer field house are just a few. Also, a new Allied Health Center on the Ridgeland Campus and the new Nursing School ADN Program in Goodman, will all compliment our excellent nursing program on the Grenada Campus. The new Premier Health Clinic on the Goodman Campus will provide medical services to HCC employees and students, as well as the surrounding community. Also, we continue to hear great reviews on Bulldog Ranch, a new addition to HCC facilities.

As part of the Holmes CC family, we see the vast growth and improvement on every campus. However, this has also been noticed and recognized nationally. Niche is a national organization that analyzes and ranks schools and colleges nationwide. Niche recently named Holmes Mississippi's #1 Community College! HCC also ranks 11th out of 252 Best Online Colleges in America, and 36th out of 906 in the Best Community Colleges in America division. Also, Accelerate Mississippi, the lead development strategy and coordination, awarded HCC with \$800,000 to increase ADN classes in the district.

As supporters of HCC and the Foundation, you help make all of this success possible. As Dr. Haffey said, "You help bridge the gap for the funding to make it all happen." We can all be proud of the growth and accomplishments of Holmes CC. Thanks to all the HCC employees for their hard work and thanks so much to you for your support.

Sincerely,

Jesse E. Leverette, Jr.
President, Holmes Community College Development Foundation
Class of 1965

At Your Service

Development Foundation Staff



Dr. Lindy McCain
*Executive Director & Vice President for
Research, Development & Student Affairs*
lmccain@holmescc.edu
(662) 472-9017



Brittini Dickerson
*Assistant Secretary/
Treasurer*
bdickerson@holmescc.edu
(662) 472-9017



Sonny Sparks
*Executive Vice President for
Financial Services*
ssparks@holmescc.edu



Katherine H. Ellard
Coordinator of Alumni Affairs
(662) 472-9134
kellard@holmescc.edu



Wirt Hayes
Treasurer
(662) 472-9017

About the Foundation

The Holmes Community College Development Foundation was established more than 45 years ago to represent the nine-county district the college serves. Its purpose is to provide funds for scholarships for students attending Holmes as well as provide funds to support other educational activities of the college, such as faculty development, modernization of classroom equipment, student development activities, and sponsorship of capital improvement campaigns.

Alumni Association Officers



Jacob Black
President



Linda Irby
*Secretary/
Treasurer*



Matt McCory
Vice President



Derek Starling
Past President

Alumni Resources

The Alumni Association is proud to offer these services: record maintenance, alumni relations, alumni development, homecoming activities, and the annual golf tournament. The association is also responsible for the Holmes Alumni House, the Holmes House, and the Chapel on the Hill.

Alumni Association Ex-Officio Members

Jessie Leverette, Foundation President; Dr. Brady Richardson, Foundation Vice-President; Doris Belk, Foundation Secretary; Wirt Hayes, Foundation Treasurer; Dr. Jim Haffey, HCC President; Dr. Lindy McCain, Foundation Executive Director; Katherine H. Ellard, Coordinator of Alumni Affairs; Dr. Michelle Burney, V.P. of Grenada Campus; Andy Wood, V.P. of Goodman Campus; and Dr. Don Burnham, V.P. of Ridgeland Campus





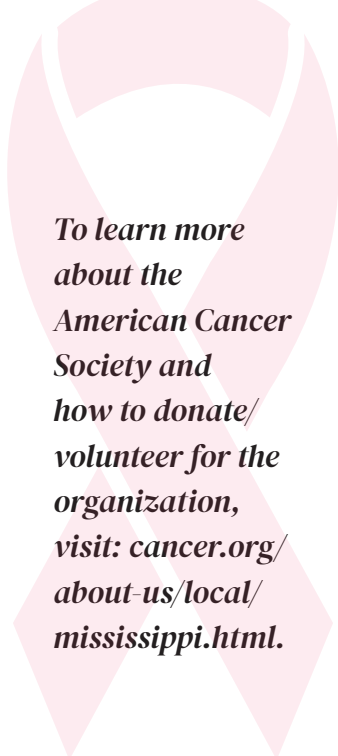
Holmes' Dr. Mackey named 2022 Honoree for the American Cancer Society

Dr. Teresa Mackey, vice president for compliance and institutional research at Holmes Community College, has been named a 2022 Honoree for the American Cancer Society. This honor recognizes a survivor who has been an active volunteer and supporter of breast cancer research to detect it early, eradicate it and prevent reoccurrence.

Dr. Mackey attended the American Cancer Society Survivor Luncheon and has been an annual participant in the Making Strides Against Breast Cancer event for which she has been recognized as a Pacesetter for her fundraising efforts. This year, Dr. Mackey shared her survivor speech at the Making Strides Against Breast Cancer Kickoff. Making Strides celebrates its 30th anniversary and the local event was held on Saturday, Oct. 29 at Mississippi Braves Trustmark Park in Pearl.

"I am honored and humbled to be recognized as an honoree," Dr. Mackey said. "My story is similar to others that have been diagnosed with this awful disease, but the ability to share my story of faith, hope and love brings me comfort. This was my first time talking publicly about my experience with the six-letter word that sends chills, anxiety, anger, grief, tears and a range of emotions throughout a person and their family. It was no easy

IN THIS PHOTO: Pictured are (left to right) Katrina B. Myricks, former Holmes instructor and American Cancer Society Honoree, with Dr. Teresa Mackey, Vice President for Compliance and Institutional Research and 2022 American Cancer Society Honoree.



To learn more about the American Cancer Society and how to donate/volunteer for the organization, visit: cancer.org/about-us/local/mississippi.html.

feat, but this journey of survivorship reminds me that we are surviving every day. I am thankful to the American Cancer Society for the recognition.”

According to the American Cancer Society’s website, an estimated 287,850 new cases of invasive breast cancer will be diagnosed among women this year. Additionally, breast cancer is the most common cancer diagnosed among U.S. women and is the second leading cause of death from cancer among women after lung cancer. Although breast cancer is a predominantly female disease, approximately 2,710 new cases will occur among men this year.

“I urge everyone to stay abreast of their health and wellness,” Dr. Mackey said. “Eat right and stay active. If you notice any changes to your body, seek the advice of a healthcare expert and get screened. Too often we prioritize so many things in life over our health when it should be a top priority. If you are not well, you can’t do those other things.

“In the event that you are diagnosed with this awful disease, know that the American Cancer Society is here to help,” Dr. Mackey said. “They have a host of resources and support for survivors, thrivers and their caregivers. They provide lodging, rides to treatment and a listening ear along with funding for research so that we may one day say that there is a cure for cancer.

“I want everyone to stand up and support their efforts,” Dr. Mackey said. “I am standing on the shoulders of those survivors before me and I must strengthen and broaden my shoulders for those diagnosed after me by being an advocate and supporter. October is Breast Cancer Awareness month so let’s wear pink and canvass our communities for support.”

An accomplished leader in the field of academia, Dr. Mackey holds a Doctor of Philosophy in Community College Leadership, a Master of Science in Secondary Mathematics Education and a Bachelor of Arts

in Mathematics from Mississippi State University. Prior to her current position at Holmes, she served as vice president for instruction at East Central Community College for 10 years, and has been an adjunct mathematics instructor for Jackson State University since 2014. Before East Central, she worked for East Mississippi Community College for 12 years, holding the roles of associate dean of instruction, mathematics instructor and Phi Theta Kappa honor society advisor. Dr. Mackey also held several positions at MSU while earning her degrees and is a 2010 graduate of the Mississippi Community College Leadership Academy.

“I am standing on the shoulders of those survivors before me and I must strengthen and broaden my shoulders for those diagnosed after me...”

As one who is no stranger to community involvement and leadership roles, Dr. Mackey is a member of Alpha Kappa Alpha Sorority, Incorporated; the Mississippi State University Department of Educational Leadership Advisory Board, the National Academic Advising Association (NACDA) and of course, a volunteer with the American Cancer Society. She and her husband, Dr. Shawn Mackey, reside in Madison and have three children: Christopher, Shawn Jr. and Matthew. In her spare time, she enjoys traveling, reading, spending time with her family and mentoring others.

“Dr. Mackey is one of our incredible survivors who continues to lead this journey every day for others who are in the fight,” said American Cancer Society Executive Director Jennifer Bennett. “She gives so much hope to others with her story of perseverance and resilience. Dr. Mackey is one of the reasons why we continue to do what we do every day, fight for the day that nobody will hear the words you have cancer! Make the call now to your doctor to have your annual breast exam.”

73.5%

Mississippi has one of the lowest breast cancer screening rates in the nation for older women. #9 lowest among all states and 4.77% lower than the national average.

1 in 4

More than one-quarter of Mississippi’s women do not receive regular screening that could save their life.

1:2,000

This year alone, more than 2,000 Mississippi women could be diagnosed with breast cancer.

Niche names Holmes Mississippi's #1 Community College

Niche recently named Holmes Community College Mississippi's 2023 #1 Community College. The company also ranked Holmes 11 out of 252 in the Best Online Colleges in America category and 36 out of 906 in the Best Community Colleges in America division. Holmes achieved these rankings for standing out in both quality and affordability.

"On behalf of our institution, we are excited to be recognized as the best community college in Mississippi," said Holmes President Dr. Jim Haffey. "At Holmes, we are proud to provide a quality, affordable education with some of the best instructors and staff members in the state. We are continually working to add new programs, update our facilities and find ways to offer students the most advanced technology/updated equipment possible to enhance their learning experience. Offering an accessible education that helps students prepare for promising careers gives us great pride."

A multi-campus institution, Holmes offers the Associate of Arts degree, Associate of Applied Science degree, technical and career certificates and workforce training. The college now offers more than 50 academic majors, approximately 30 professional programs and a variety of student support services. Holmes is accredited by the Southern Association of Colleges and Schools Commission on Colleges.

Holmes is part of the Mississippi Virtual Community College (MSVCC) and offers classes via the Internet platform Canvas. Courses are offered both by Holmes instructors and through other instructors in the MSVCC. Although several options are offered, including regular semester courses, four-week courses and eight-week courses, the eLearning Department offers to customize schedules for interested students if they do not see a class they need. Currently, Holmes offers over 80 online programs.

Holmes' low student-to-faculty ratio and affordability make the college accessible to many, as well. Currently, 94 percent of students at Holmes receive financial aid. The Office of Financial Aid administers a variety of programs to assist in meeting student financial needs, including Federal and State financial aid programs, student loans, state scholarships and Federal Work-Study.

Additionally, this is not the institution's first time to be recognized for excellence. Mississippi Business Journal named Holmes as a finalist for the "Best Two-Year College" in Mississippi, ranking the college second in the state in 2019. Holmes also ranked #2 for Best Online Associate in Psychology Program by TheBestSchools.org two years in a row and was ranked #2 for Best Online Community Colleges in Mississippi by Optimal's Guide to Online Schools, just to name a few accolades.



Niche.com
**Reviews from
our students:**

"Holmes CC has been a place where I found it easy and convenient to get my degree- I like the school so much that I returned to get my RN nursing degree and am enjoying the weekend and evening classes the Ridgeland campus now offers! Go Bulldogs!"

"I have been vary pleased with my experience at Holmes. My favorite aspect of the school is the professors, they are very dedicated to their jobs and are engaged with their students. My professors have always showed me that they value my participation as well as my input. Since it is a small college, it is easy to make connections with the other students and staff around me. I'm very confident that I made the right decision by attending Holmes Community College before going off to a four-year university."

View our profile at niche.com/colleges/holmes-community-college.



Dr. Tonya Lawrence named 2023 Shelton Award Recipient

Dr. Tonya Lawrence, Dean of Academic Programs, has been a Holmes Community College employee since 2005. She began her career at Holmes as an instructor of biological sciences teaching Principles of Biology I/II, Zoology I/II, Human Anatomy & Physiology II and Nutrition. While Lawrence is now serving as a part of the administrative team of the college, her heart will always be in the classroom.

From the classroom, Dr. Lawrence transitioned to the Director of Evening Programs in 2009 and she remained in that position for two years. In 2011, Dr. Lawrence was named the Academic Dean of the Goodman Campus, where she also served as Phi Theta Kappa advisor.

“Throughout the years at Holmes, I have been blessed to work with such a diverse group of people,” Lawrence said. “I have reflected many times on my career here and it has amazed me at how many people have invested time and energy to develop me into a leader. I would not be where I am today without God’s plan and the people He placed in my life who have taught me so many great life lessons.”

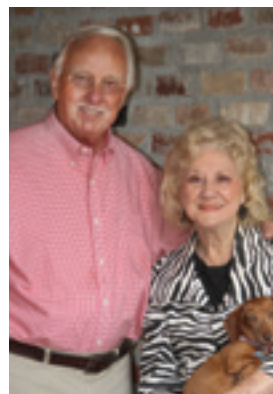
In December 2014, Dr. Lawrence transferred to the Ridgeland Campus as the Academic Dean where she is today. In 2019, when she was named the Dean of Academic Programs, she was able to expand her role to work in a district capacity with Division Chairs, specifically to support their departmental goals and initiatives as well as assist with reflection on and improvements to the classroom experiences in their respective divisions.

Dr. Lawrence’s passion for teaching and all things instructional is fitting for the most recent promotion. She is thankful for the opportunity to work with the Holmes Division Chairs who are the academic instructional influencers of the college. She is able to work with a strong set of faculty leaders that help strengthened her skill set as well.

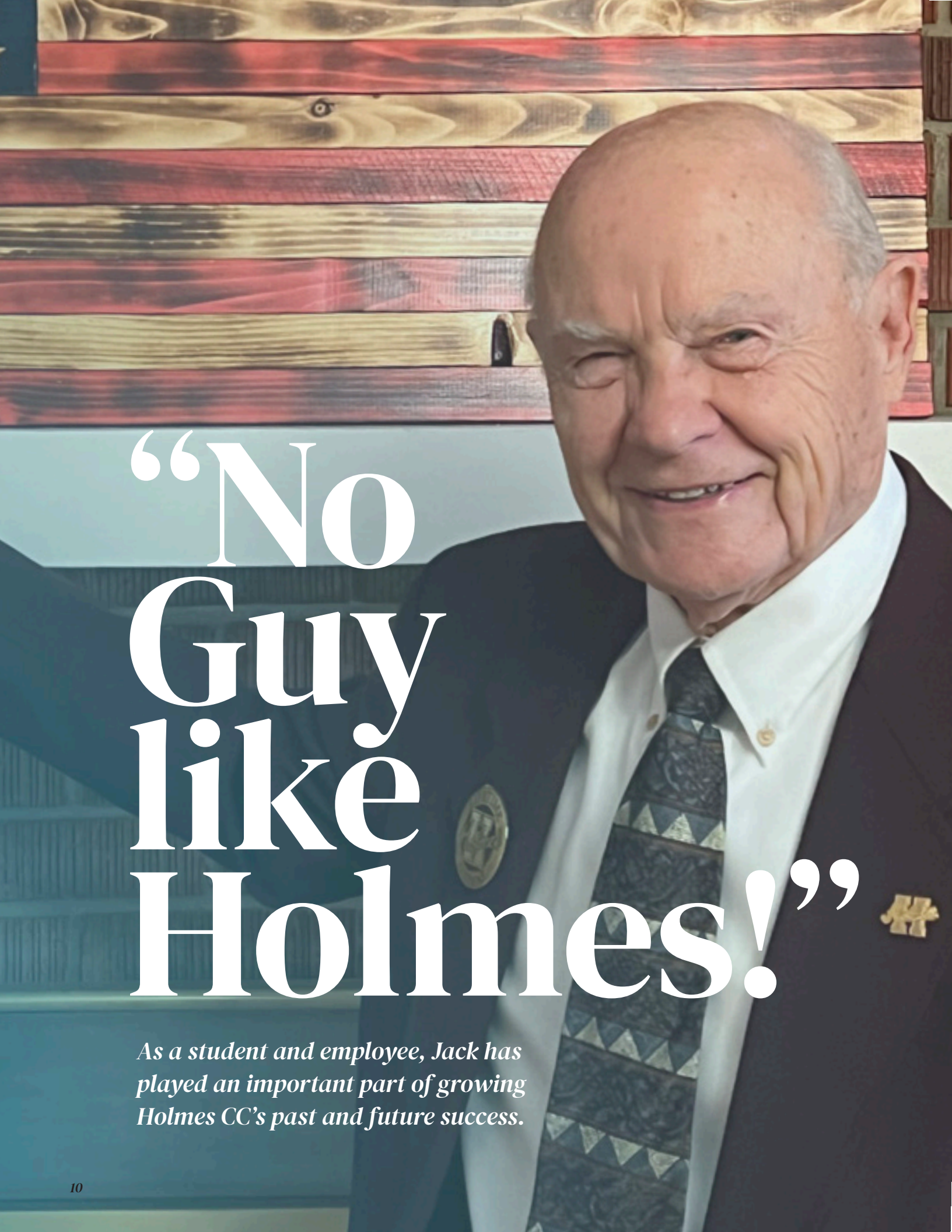
“I believe the future of this Holmes team is very bright,” Lawrence said.

Some of Dr. Lawrence’s career achievements include Lamplighter Award (2007), Moody Institute Fellow (2022) and graduation from the Mississippi Community College Leadership Academy (2011-12). She received the Horizon Award (2013) and the Distinguished Administrator Award from Phi Theta Kappa (2019) for her dedications to students, as well.

Dr. Lawrence is married to Will and resides in Madison with their daughter Cameron Grace (8) where they enjoy canoeing and paddle boarding on a local lake. She is a member of the Mississippi Community College Academic Officers Association and attends First Baptist Church of Flora with her family. Lawrence enjoys her annual trip to the beach with her family and on occasion she will run a half-marathon.



McCrea and Paul Shelton established the scholarship to be awarded to employees who go above and beyond in support of the college, dedication to students and community service involvement.



“No
Guy
like
Holmes!”

As a student and employee, Jack has played an important part of growing Holmes CC's past and future success.



If you looked in the 1952 edition of Holmes Community College's Horizons yearbook, you would find Jack Holmes in the sophomore class. It states that Jack played football and was a member of the H Club. It also describes him as a "good-looking, friendly, and an all-around guy." We cannot disagree.



Jack played football at three levels: high school, junior college, and D2. The Bulldogs were happy to have him on the squad in 1952. He started as halfback and quarterback.

Jack Holmes is a native of Sallis and longtime resident of Kosciusko. He was employed by Holmes Community College in many capacities for more than 30 years and has continued to support the college since his retirement. Those who know him, know that his passion for Holmes and his humor have kept him young for over 90 years.

"I have the same birthday as George Washington (Feb. 22) but of course not the same year," Jack said.

Jack attended Sallis High School where he played quarterback with a very talented Wildcats football team. In 1948, Sallis bested Woodville to win the state title.

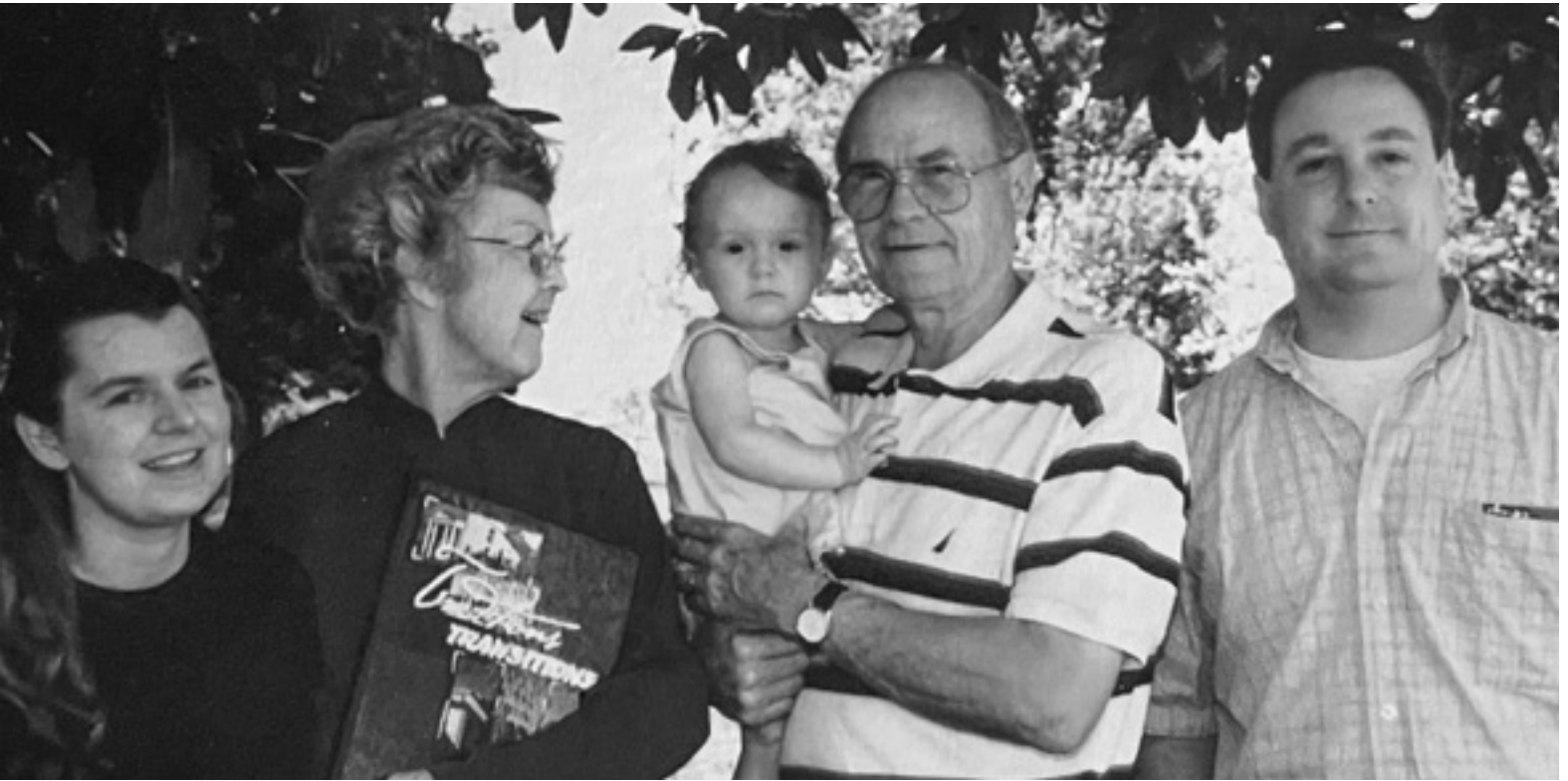
Holmes graduated from high school in 1950 and continued his education and athletic career at Holmes Community College. Jack played football as well as baseball, claim-

ing the 1951 State Baseball Championship for the Bulldogs.

After he graduated from Holmes CC in 1952, Jack continued his education at Delta State Teaching College where he played football as halfback and quarterback. He earned a Bachelor of Science in Education from Delta State Teaching College and later a master's degree in education from Mississippi State University.

After so much success in college, Jack looked for another avenue to use his talents. A conversation with a good friend would lead him to next love—the United States Marine Corps.

Jack was encouraged to enlist in the Marines by a friend and fellow Sallis native, Lamar Waddell, who had already taken up the Eagle, Globe and Anchor as a cadet in the Marine Corps Platoon leadership program. Holmes enlisted and completed officer training at Quantico, Virginia and Camp Pen-



delton, California. He was commissioned as a 2nd lieutenant and stationed in California and Hawaii. Once discharged from active duty, he continued his service in the marine reserves. Jack retired from the marine reserves in 1956 having earned the rank of captain.

He returned home to Mississippi where he taught history and coached at Grenada High School. He married his wife, Margaret Nell, of Kosciusko in 1959.

Never one to sit still, Jack spent the next 15 years traveling the country with the insurance industry, living in New Orleans, San Francisco and San Jose. However, as his fami-

ly grew, he heard the call of home, and again, of Holmes CC.

In 1971, Jack and his wife decided to bring their four children back to Mississippi. When his father retired from teaching at HCC's Kosciusko Skill Center, Jack was hired to replace him.

Later, Jack served as Assistant Director of Vocational Education and was then named Director of the Skill Center programs on the Goodman Campus.

In 1985, the college saw record growth and opened two new campuses in Ridgeland and Grenada. Jack was chosen to be the first Vice President of the Grenada Campus.

Top Left: Jack ('52) receives the first copy of the 2002 Horizons, which was dedicated to him for his many years of service to Holmes Community College. Pictured L-R are daughter-in-law Ginger Pee Holmes ('93), wife Margaret Holmes (holding a copy of the yearbook), granddaughter Abby and son Kirk Holmes ('86).

Top Right: In 2010, the Grenada Phi Theta Kappa chapter won 'Most Distinguished Chapter' They celebrated with former Grenada Campus V.P. Jack Holmes and Dr. Glenn Boyce, former president of Holmes Community College.

Far Right: Capt. Jack Holmes, U.S.M.C., Ret. still proudly wears his uniform to social events. Once a Marine, always a Marine.

The newly established Grenada Campus grew rapidly thanks to Jack's love for Grenada and enterprising leadership. He played an integral role in starting the Grenada Arts Partnership Series that host-

ed many notable performers in the campus' Corey Forum.

Jack also worked tirelessly to establish the first Associate Degree Nursing (ADN) program in Grenada. The program has



produced thousands of nurses, has grown to encompass the entire district, including programs on the Ridgeland and Goodman Campuses.

The love and support Jack poured into the college was often most evident in the accomplishments of our students. In 2010, the Grenada Chapter of the Phi Theta Kappa received the “Most Distinguished Chapter” award, out of 1,250 other PTK chapters across the nation.

Jack loyally led the Grenada Campus for 25 years. After nearly three decades of service to the college, Jack finished his career as Director of the Holmes CC Development Foundation.

“Holmes Community College provided me with an enjoyable part of my life as a student and as an employee and set me up for success.” Jack continues, “The people I worked with were the best and continue to be the best at Holmes.”

Even though Jack retired in 2010, his love of the college inspires him to stay with Holmes. He is a Holmes Alumni Association past-president and continues to serve on the Development Foundation’s Board of Directors and Board of Governors. He has also received several awards from the college: Alumnus of the Year, Veteran of the Year and Special Service Award recipient.

A loyal fan of Bulldog athletics, he can often be spotted cheering in the stands at Holmes sporting events.

“I met some of my best friends at Holmes as a student and employee,” Jack said.

Jack still resides in Kosciusko where he is an inactive deacon at First Baptist Church Kosciusko and involved in other church activities. He is quick to boast that love for HCC runs throughout his family. The list of family alumni includes his two sisters, three of his four children, and one of his grandchildren—with another grandchild planning to attend in fall of 2023.

“My children, grandchildren and great grandchildren keep me busy,” Jack said.

As he reminisces about his many memories over decades cherished at Holmes, Jack’s earnest appreciation is evident. He says, “I want to thank all the college presidents and staff that I worked with on the Goodman Campus. I’d also like to give a very special thanks to the faculty and staff on the Grenada Campus. I can truly say as a student or employee, there is no place like Holmes.”

Foundation Annual Giving Donors

Thank you to all the generous donors who contribute to the Holmes Community College Development Foundation each year. We could not fulfill our mission without you!

Platinum Level (\$10,000- \$24,999)

Anonymous
Doris Belk
Hankin's Lumber Company, INC
Greg Holloway
Jackie McKinney
Mississippi Community College Foundation
Renasant Bank
Women's Foundation of MS

Wayne Heilbronner
Jack Holmes
Jennifer & Hugh Johnson
Jacqueline Kocke
Becky & Jesse Leverette
Perry Liles
Jan & Dale McBride
Mississippi Organization for Associate Degree Nursing
Katherine Montgomery
Peggy & Wilton Neal
Janice & Gene Richardson
Reba & Robby Robertson
Rose Business Equipment, INC
Debbie & Frank Shaw
Mcrea & Paul Shelton
Carolyn Thomas
Vanguard Charitable
Pamela Whiteside
Mack Woo
Dr. Lynn & Mr. Elton Wright

Dr. Tonya Lawrence
Ben Lewis
Gladys Lewis
Magee Enterprises, INC.
Dr. Bronwyn Martin
Medscreens, INC
Ginger Meriwether
Mississippi Lignite Company
Linda Nichols
Paint Plus Construction, LLC
Path Company, LLC
Premier Medical Management
Tish Stewart
Hayley & Nicholas Upchurch
Walmart-Koscisuko
Dr. Amy & Mr. Frank Whittington

Tammy Collins
Matthew Convertino
Copiah-Lincoln Community College Softball
Dr. Stacey Coulter
Dr. Kathryn Cox
Dr. Tiffany Cox
Brandy Culpepper
Madison Cummins
Kristen Daniels
Brittini Dickerson
Faye Dillard
Dr. Stephanie Dolan
Darleen Dozier
Norman Faulkner
Kimberly Fowler
Cathy & Howard Grantham
Grenada Higher Education Association

Gold Level (\$5,000- \$9,999)

Atmos Energy Corporation
Clytice Gardner (the late)
Dr. & Mrs. Jim Haffey
Dr. & Mrs. Sam Massey

Friend (\$500-\$999)

Aladdin Food Management Services, LLC
James Baggett
Ryan Beggs
Dr. Don & Mrs. Carol Burnham
Miranda & Brian Burns
Sherrie & Stephen Cheek
Tess Crenshaw
Ellison United Methodist Church
William Fitts
Follett Higher Education Group
Howard Industries, INC.
Innovative Computer Solutions
JH & H Architects Planners Interiors
Dr. Jenny Bailey Jones

Supporter (\$1-\$499)

Cynthia Abel
Christi Adams
Stacy Algood
Lisa Anglin
AmazonSmile
Sonja Arnett
Dr. Alice Austin
Lilly Austin
Caroline Barton
Bennett Land Investments, LLC
Morgan Bondurant
Boswell Media
Kayla Boyette
Cindy Bridges
Dees Britt
Julia Brown
Ashley Broyles
Dr. Michelle Burney
Dr. & Mrs. Howard Butler
Central Office Supply
Jay Cheatham

Jimmie Hall
John Hall
Terrell Hammett
Dr. Theresa Hargett
Debbie Harville
Lois & Wirt Hayes
Tracy Herring
Dr. Clate Holleman
Holmes County Bank & Trust Co.
Rhonda Jefcoat
Erin Jenkins
Bill Johnson
Earl Johnson
Jo Johnson
Dr. NaTunya Johnson
Virginia Johnson
Dr. Luke Jones
Debbie & Robert Jordan
JPH Ridgeland, LLC
Kroger Community Relations
Amy Land

Silver Level (\$2,500- \$4,999)

Charles Montgomery
Janice & Charles Putnam
Julie & Gerry Taylor

Patron (\$1,000-\$2,499)

Betty Sue & Joe Adams
Dr. & Mrs. Edward Bryant
Rita & Danny Chandler
Mary Cobb
Tommy Cobb
James Crowe
Culpepper Funeral Services
Entergy
Maggie Garrett
The Gertrude C. Ford Foundation
Dr. Keon Gregory
Dr. Lily Fran Guastella

Foundation Mini-Grants

LaShonda Levy
Trent Little
Amber Mabus
Alice Mason
Dr. Lindy McCain
Marshall McCain
Bobbie McFarling
Laura McMahon
Ann Montgomery
Heather Mooney
Ethel Moore
Dr. Rachelle Moore
Network For Good
Dana Nichols
Kristie & Brent Orr
Nancy Parkerson
Michael Pawlik
Jennie Pegg
Mary Ann & Davis Richards
S&S Recovery, INC
Maurin Savage
Rosemary Self
Shamrock Sales, LLC
Sonny Sparks
State Farm Insurance
Matthew Surrell
Chanda Sykes
Trustmark National Bank
Xiaoying Wang
Mallory Weeks
Marion Whigham
Andy Wood
Heather Wood
Marcus Wood
Stephanie Wood
Guinevere & James Young

Terry Miller
Band, Goodman

12.9 inch iPad Pro to catalog all method books and music on one device

Sonja Arnett
English, Goodman

100 Books for in-class reading assignments

Benny Edwards
Fine Arts, Goodman

Four electronic keyboards and
Four acoustic pianos

Steve Diffey
Communications, Goodman

Weatherproof video camera, cables, and amplifier for late afternoon games

Dr. Samuel Dasary
Chemistry, Ridgeland

Upgrades to Chemistry Lab: Ice Maker, TLC UV Lamo and Cabinet, Rotova, Vacuum Desiccators, and Mel-Temp Apparatus,etc.

Jeffrey Brown
Band, Goodman

Macbook Pro, Pyware 3D Basic, Finale v27 upgrade for instrumental ensembles

Dr. Rekam Giri
Physics, Ridgeland Campus

PASCO scientific 850 Universal Interface experiments for lab

Mike Yates
Fine Arts, Goodman

Replace discontinued wireless microphones

Jay Cheatham
Fine Arts, Goodman

10 easels for Art Department

Each year, faculty and staff members apply for Foundation Mini-Grants based on student needs. These grants are made possible by our donors and provide students with up-to-date tools for learning.



Holmes Legacy Club

The Holmes Legacy Club is an opportunity for donors to invest in Holmes Community College and the people it serves. Legacy Club members pledge a minimum of \$1,500 annually.

These gifts help bridge the gap between Holmes' essential needs and available funding. Private support makes the difference between a budget that provides a minimal level of support for teaching and faculty development and one that means an enhanced educational experience.

Legacy Club Members:

Betty Sue & Joe Adams

Anonymous

Atmos Energy Corporation

Doris Belk

Dr. & Mrs. Edward Bryant

Culpepper Funeral Services

The late Clytice Gardner

Maggie Garrett

Dr. & Mrs. Jim Haffey

Hankin's Lumber Company, INC

Greg Holloway

Jack Holmes

Becky & Jesse Leverette

Dr. & Mrs. Sam Massey

Jackie McKinney

Mississippi Community

College Foundation

Charles Montgomery

Peggy & Wilton Neal

McCrea & Paul Shelton

Janice & Charles Putnam

Renasant Bank

Janice & Gene Richardson

Reba & Robby Robertson

Rose Business Equipment, INC

Debbie & Frank Shaw

Julie & Gerry Taylor

Carolyn Thomas

Pamela Whiteside

Women's Foundation of MS

Each year, the Legacy Club takes a trip to network and celebrate Holmes. In the past, the group has traveled to The Grand Hotel at Point Clear, the Mississippi Gulf Coast, New Orleans, Nashville, and Memphis. This year the Legacy Club traveled to New Orleans. They left from the Holmes Campus on a Monday and returned on a Wednesday. The trip was filled with fun activities around the city, enjoying good cuisine and watching a performance at the Saenger Theater.



Memorials & Honorariums

Maggie Garrett

Doyle Ables, Barbra Alston, Charles Branch, Bob Burrell, Betty Lou Criswell, Eva Dickerson, Wanda Fancher, Pam & Robert Fox, Clytice Gardner, Pat Lacey, Susan Pope, Patsy Sanders, Marge Schmidt, Kathy Shrewsbury, Bubba Spell, Jr., Steve Upchurch, Sylvia Upchurch, and Joann Williams

Dr. Lindy McCain

Ann Aldridge, Inez Collins, Eva Dickerson, Choyce Diffey, James Faulkner, Clytice Gardner, Martha Hughes, Alice Grace McCreary, David Moore, Jimmy Rigby, Brian Simmons, Bubba Spell, Jr., Lisa Thompson, Steve Upchurch, Sylvia Upchurch, and Sandy Wright

Sherrie Cheek

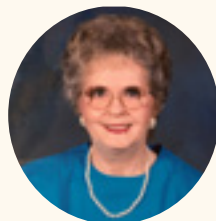
West Bailey, Inez Collins, Jimmy Rigby, Jim Shirley, and Sandy Wright

Dr. Jenny Jones

Choyce Diffey and Alice Grace McCreary

Holmes Remembers Eva Dickerson

Holmes retiree Eva Dickerson, of Kosciusko, passed away April 26, 2022. Eva served as secretary for the Holmes CC Admissions & Records office from 1981 until 1991. She was a smiling face that welcomed a decade of Holmes' students.



Tish Stewart

Choyce Diffey and Alice Grace McCreary

Grenada Higher Education Association

Mr. James Faulkner

Dr. Jim Haffey

Ann Aldridge, Inez Collins, Eva Dickerson, Choyce Diffey, James Faulkner, Pam & Robert Fox, Clytice Gardner, Martha Hughes, James William Jones, III, Ann & Henry Jordan, Daniel Malone, Alice Grace McCreary, David Moore, Jimmy Rigby, Brian Simmons, Lisa Thompson, Steve Upchurch, Sylvia Upchurch, and Sandy Wright

Alice Mason

Michael Mason

Carolyn Thomas

Ronnie Thomas

Honorarium Class of 1963 & 1965

Dr. Lynn & Mr. Elton Wright

Bequests & Trusts

Anonymous

The late Clytice & Burnis Gardner

Mrs. Freda B. Harper & the late Billy Harper

Margaret & the late John T. Keeton, Jr.

Billie Joyce & Robert Pool

Types of Planned Gifts

Holmes is ready to work with you and a financial advisor or attorney, in confidence and without obligation, to help you explore the best method of giving for your circumstance.

Bequests Leave a gift without diminishing the assets available to you during your lifetime.

Charitable Remainder Trusts Give to Holmes while providing a life income for yourself or beneficiaries.

Annuities Receive life income without a huge donation or complicated agreement.

Life Insurance Make a substantial gift through relatively modest annual payments.

Retained Life Estate Transfer the ownership of a home or farm while retaining the right to use the property during your lifetime.

External Grants

We held several community partnerships that help us invest in Holmes to provide our students with the best tools for learning. A special thanks to AmazonSmile, Trustmark Bank, Kroger and Atmos.

Newly Endowed Scholarships

Rosie L. Small-Gregory Memorial Scholarship:

Rosie Lee Small-Gregory of Winona developed a passion for caring for others after caring for her own parents in failing health. This passion led her to enroll in and graduate from the Holmes Community College Practical Nursing program in 1980. Her children, William K. Small and Dr. Keon M. Gregory, wanted to ensure that her spirit is eternal. This scholarship is presented to a well-deserved person who identifies as an African American, is from Montgomery County and who wishes to model her caring and compassionate spirit.



Small-Gregory ('80) dedicated 32 years of her life to the nursing profession and worked in hospitals, clinics, nursing homes and her favorite, a group home. Small-Gregory worked as a LPN until her last day on this earth. July 3, 2012.



Redeemer's Scholarship:

This scholarship was established by Jackie McKinney to aid African American residents of Vaiden, MS or Montgomery County who have a financial need. The recipients will be one associate's degree (AA) seeking male and female. If there is not a qualified (AA) male, the funds will not be disbursed. Recipients must be full-time and maintain a 2.0 grade-point-average.

Chapel Courtyard Bricks

You are invited to add your personal touch to the Chapel on the Hill on the Goodman Campus. This is a tax exempt campaign set up by the Holmes Community College Development Foundation. It not only adds to the charm of the campus but also reminds our future students that they are walking along a path that so many look back on fondly. With each brick, we help create a strong foundation that guides newcomers toward a lasting education.

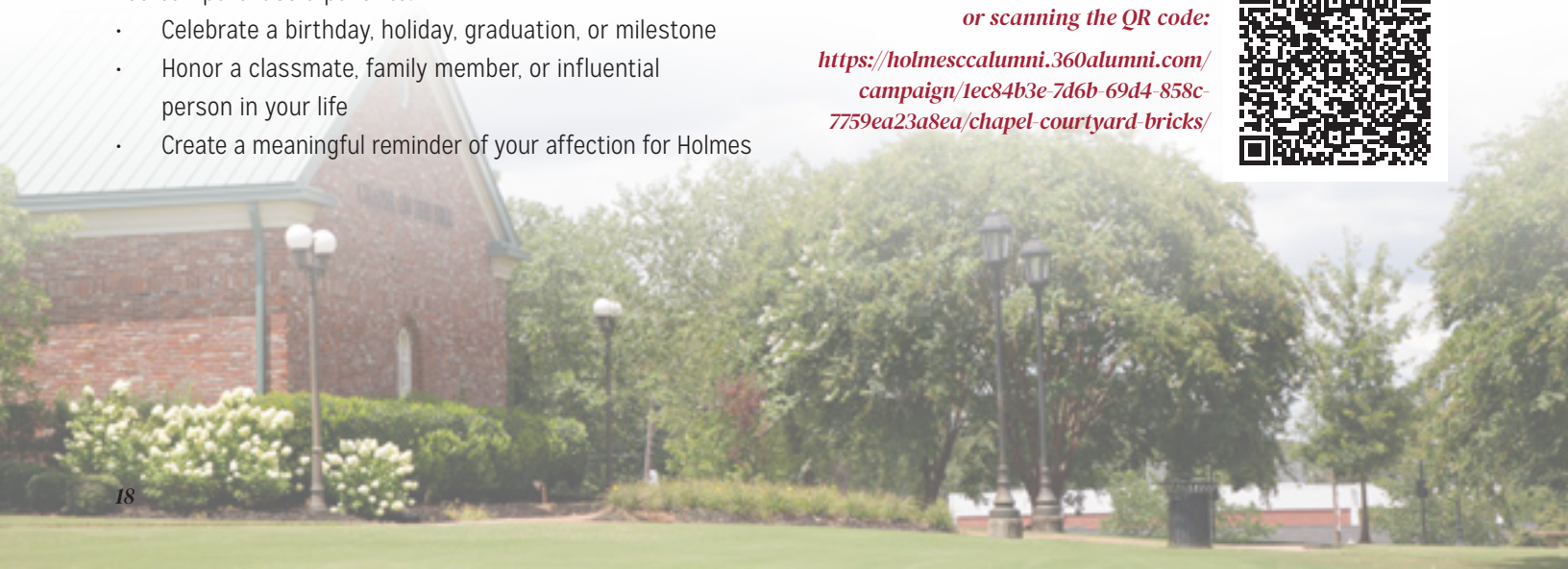
You can purchase a paver to:

- Celebrate a birthday, holiday, graduation, or milestone
- Honor a classmate, family member, or influential person in your life
- Create a meaningful reminder of your affection for Holmes



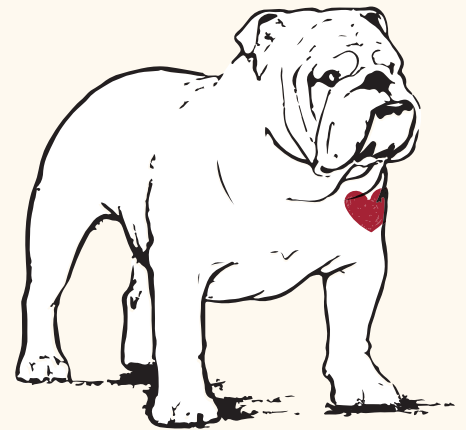
Purchase by visiting the link or scanning the QR code:

<https://holmesccalumni.360alumni.com/campaign/1ec84b3e-7d6b-69d4-858c-7759ea23a8ea/chapel-courtyard-bricks/>





Better Health Bulldog Program



The Holmes Community College nursing student is not always the traditional freshman student. In many cases our Associate Degree Nursing (ADN) students are a working parent or a newly married individual looking to further their education in order to provide for their family.

Our Development Foundation now has an opportunity to support these individuals while furthering their degree to prepare them for the workforce. There are limited scholarship funds available for students on the Ridgeland Campus where the cost of living is significantly higher than the rest of the district.

The Better Health Bulldogs program is a grant obtained in conjunction with the Bower Foundation and the Women's Foundation of Mississippi which has helped provide emergency funds for our ADN students to help ease financial burdens while obtaining their nursing degree.

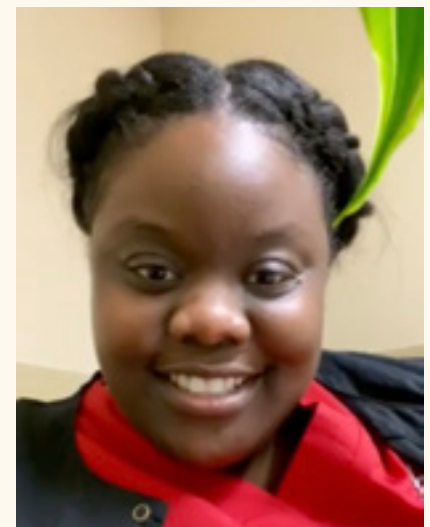
Holmes Community College is poised to help fill the gap of the current shortage of nurses in our state. Located in central Mississippi, our nine-county district provides training for the poorest and richest parts of our state. In the metro area, the need for skilled nurses is high due to the large hospital facilities that must be staffed. In the rural areas of our district, finding skilled nurses to be employed at clinics is also challenging.

Prior to COVID-19, the projected employment growth for registered nurses was 18.6% and licensed practical nursing was 11.3% in the Holmes Community College district. The average wage for a registered nurse in Mississippi is \$61,125 annually; the average wage for a licensed practical nurse is \$40,340 annually. These are high-skill, high-wage, high-demand jobs in our state for which we currently have a shortage in the workforce.

The Better Health Bulldog program is not limited to school supplies but can be used for any financial burdens that could pull students out of the program such as rent, day care or daily expenses for the students while working on their degree. This program is to help students stay on track in the program while obtaining their nursing degree.

If you are interested in supporting these students, please contact our Development Foundation Office (662-472-9017) or donate online in our Alumni Community:

<https://holmesccalumni.360alumni.com/index.php/campaign/leda71ad-4ldb-69bc-bee0-e1b8d89d2cec/better-bulldog-program/>



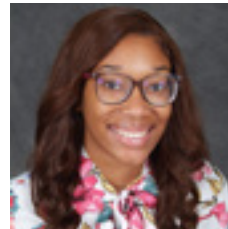
"I want to personally thank the Women's Foundation of Mississippi for their financial contribution to me this semester. It really helped ease that burden, and it also allowed me to focus more on my studies and not my financial situation. Thank you so much."

2022 Foundation Scholarship Recipients

The Holmes Development Foundation oversees Endowment and Patronage Scholarships that can be awarded to students majoring in specific disciplines. For more information about scholarships, contact the Development Foundation. Award amounts and criteria vary from scholarship to scholarship. Here are the recipients of the Endowment and Patronage Scholarships for 2022-2023.



Justin Biggers
ADP Scholarship



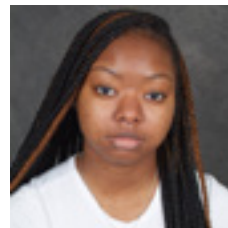
Bracie Jamison
Anonymous Scholarship



Cedria Griffin
Anonymous Scholarship



Jewell Vandevere
Anonymous Scholarship



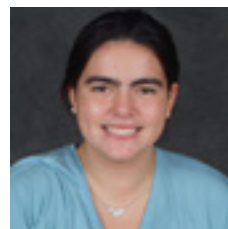
Jmya Robertson
Anonymous Scholarship



Katelyn Twiner
Anonymous Scholarship



Madison Jackson
Anonymous Scholarship



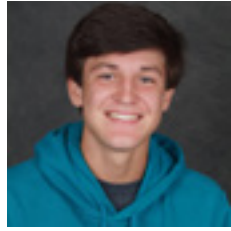
Melissa Jones
Anonymous Scholarship



Piper DuBard
Anonymous Scholarship



Radleigh Woods
Anonymous Scholarship



Elijah Black
Bain & Corey Scholarship



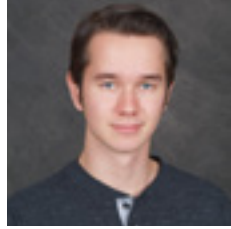
Dy'lan Roberson
Belk Family Scholarship



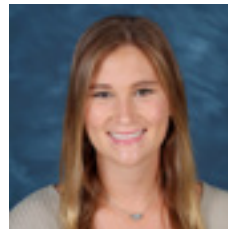
Mackenzie Bradberry
Belk Family Scholarship



Elizabeth Jones
BellSouth Endowed & Bill Bunch
Memorial Scholarship



Phillip Crawford
Bondurant Family Scholarship



Leah Kinard
Burnis T. & Clytice Gardner
Scholarship



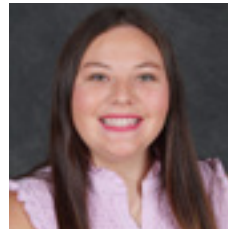
Johnathan Langford
Burnis T. & Clytice Garder &
Renasant Bank
Completion Scholarship



Hunter Brower
Class of 1963 Scholarship



Cayden Quenneville
D.P. "Pat" McGowan Scholarship



Meredith Dean
Dale Lewis Memorial Scholarship



Kenosha Gilmore
Dr. L.C. Henson Scholarship



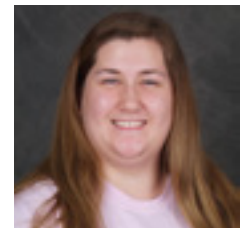
Chelsaye Wiggins
F.C. & Annie P. Dailey Memorial
Nursing Scholarship



Camille Scott
Francine Chandler Early Child-
hood Education Scholarship



Ronnie Willis
Frank B. Branch Scholarship



Laken Holdiness
Gibson Family Scholarship



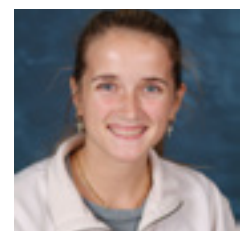
Eurickia Williams
James Baggett Scholarship



Allison Dunn
James M. Robertson, Jr.
Memorial Scholarship



Anna Oliver
James M. Robertson, Jr.
Memorial Scholarship



Jada Mims
James M. Robertson, Jr.
Memorial Scholarship



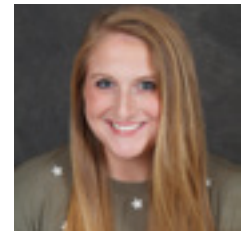
Peyton Turner
James M. Robertson, Jr.
Memorial Scholarship



Shelby Ballard
James M. Robertson, Jr.
Memorial Scholarship



Sydney Liddell
James M. Robertson, Jr.
Memorial Scholarship



Madison Odom
Jonny & Elizabeth Belk
Scholarship



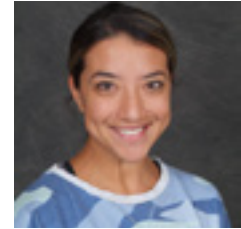
Peyton Westling
Kay Hodges Scholarship



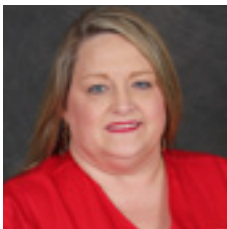
Katelyn Jones
Lennie Barnett Branch
Memorial Scholarship



Anita Fisher
Lottie Ruth Vint, R.N. &
William A. Vint, M.D. Scholarship



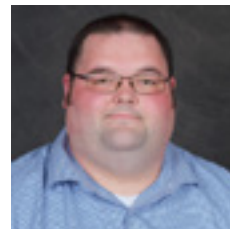
Ashleigh Rose
Lottie Ruth Vint, R.N. &
William A. Vint, M.D. Scholarship



Candice Kilgore
Lottie Ruth Vint, R.N. &
William A. Vint, M.D. Scholarship



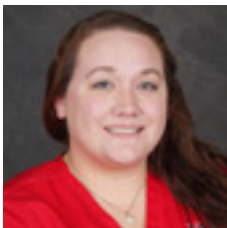
Connie Simmons
Lottie Ruth Vint, R.N. &
William A. Vint, M.D. Scholarship



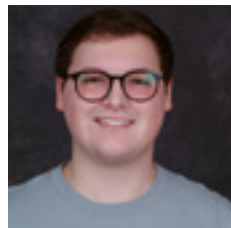
Johnathan Upp
Lottie Ruth Vint, R.N. &
William A. Vint, M.D. Scholarship



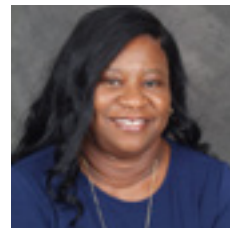
Leah Franks
Lottie Ruth Vint, R.N. &
William A. Vint, M.D. Scholarship



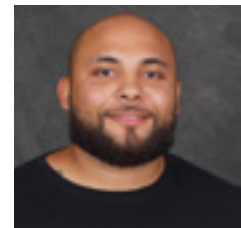
Misti Blankenship
Lottie Ruth Vint, R.N. &
William A. Vint, M.D. Scholarship



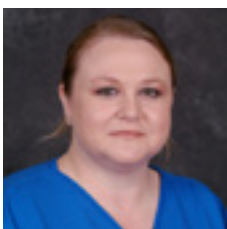
Ryan Rea
Lottie Ruth Vint, R.N. &
William A. Vint, M.D. Scholarship



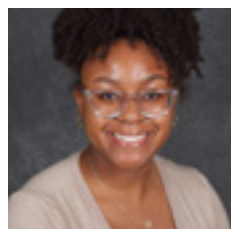
Veronica Lewis
Lottie Ruth Vint, R.N. &
William A. Vint, M.D. Scholarship



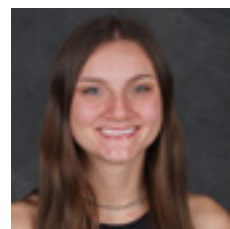
Zachary Fisk
Lottie Ruth Vint, R.N. &
William A. Vint, M.D. Scholarship



Cori McDonald
Lottie Ruth Vint, R.N. & William A.
Vint, M.D. and The Maryann Miller
Endowment Trust Scholarships



Azariya Sheilds
Margaret "Betty" Gause Lutz
Memorial Scholarship



Mackenzie Ward
McCroy Holmes
Milestone Scholarship



Neveah Minor
Mississippi Manufacturers' Assn.
Chairmen's Award Scholarship



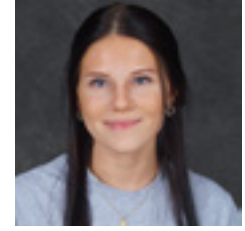
Emory Taylor
Patricia Liles
Memorial Scholarship



Mallorie Bowden
Patricia Liles
Memorial Scholarship



Jacob Ashcraft
Paul & McCrea Shelton
Scholarship



Summer Watkins
Paul & McCrea Shelton
Scholarship



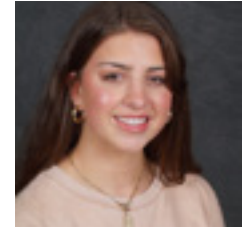
Cardeia Street
Providence Cooperative
Farm Scholarship



Casey Winstead
Providence Cooperative
Farm Scholarship



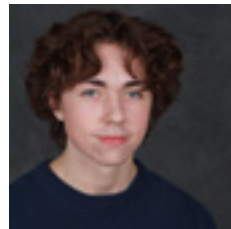
Megan Hawthorne
Providence Cooperative
Farm Scholarship



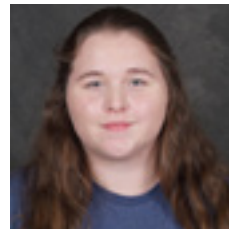
Sophie Humphreys
Providence Cooperative
Farm Scholarship



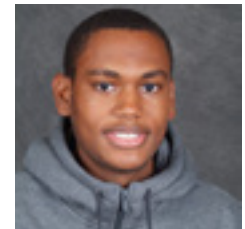
Annaleigh Jones
Renasant Bank
Completion Scholarship



Dallon Sisco
Renasant Bank
Completion Scholarship



Hailey Jones
Renasant Bank
Completion Scholarship



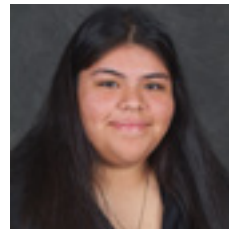
Jaylon Boarden
Renasant Bank
Completion Scholarship



Karington Marshall
Renasant Bank
Completion Scholarship



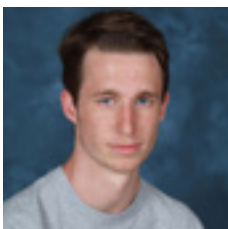
Landry Gardner
Renasant Bank
Completion Scholarship



Maria Garcia
Renasant Bank
Completion Scholarship



Martha Whitten
Renasant Bank
Completion Scholarship



Michael McBride
Renasant Bank
Completion Scholarship



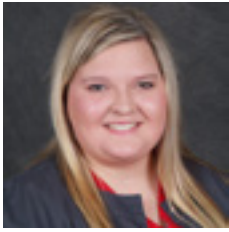
Moleyia Harmon
Renasant Bank
Completion Scholarship



Nola Myers
Renasant Bank
Completion Scholarship



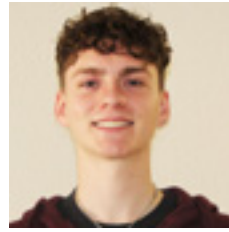
Stephen Palmertree
Renasant Bank
Completion Scholarship



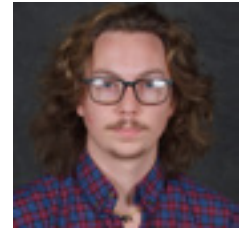
Sydni Mahaffey
Renasant Bank
Completion Scholarship



Asia Wade
Ryan James & Gail Muse
Beggs Scholarship



Clayton Turnage
The Maryann Miller
Endowment Trust Scholarship



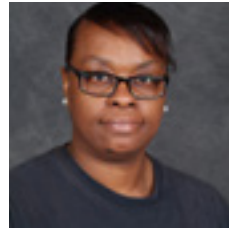
Ian Cadwell
The Maryann Miller
Endowment Trust Scholarship



Kaden Raper
The Maryann Miller
Endowment Trust Scholarship



Robert Mayhue
The Maryann Miller
Endowment Trust Scholarship



Turkesha McElroy
The Maryann Miller
Endowment Trust Scholarship



William Blackstock
The Maryann Miller
Endowment Trust Scholarship



Maggie Joiner
The Trustees Scholarship



Hayden Culpepper
Thomas Vernon
Donald, Jr. Scholarship



Brandolynn Ellard
TIC (The Industrial Company)
Welding Scholarship



Demeria Moore
W & M Thomas Scholarship

Congratulations to all of our
scholarship recipients.



Foundation Golf Tournament A Win for Holmes



On May 4, the Holmes Community College Foundation held its annual golf tournament at Deerfield Country Club. Team Paint Plus Construction - Scott DeLoach, J.T. Blair, John Thompson and Kevin Connor - was the Championship Winner. Team Howard Industries - Justin Ferguson, Steven Tiller, Bennet Witcher and Quint Raper - won the First Flight and Team Magee Enterprises, Inc. - Dr. Larry Webster, Dr. Luke Jones, John Shows and Dewayne Magee - won the Second Flight. Other winners included: Bud Lawrence, closest to the hole on two holes; Drew Godfrey, closest to the hole on one hole; Jay Leverette, closest to the hole on one hole and Greg Wynne, putting contest winner. Additionally, Entergy Mississippi provided a mini-grant which covered lunch for the tournament.

Get your team ready because planning has already begun for this year's scramble! The date has been set for May 4, 2023. The event will again be hosted by Deerfield Country Club. To participate in this year's Foundation Golf Tournament, please contact Allison DeWeese at (601) 605-3430

Special Thanks to our 2022 Sponsors

Culpepper Funeral Home
Entergy Mississippi
Follett Higher Education Group
HCC Men's Basketball
HCC Men's Soccer
Howard Industries
Innovative Computer Solutions
Ivey Mechanical Company
JH&H Architects
Magee Enterprises, Inc.
Mississippi Lignite Mining Company

Paint Plus Construction
Par-Tee-Time
Path Company, LLC
Premier Medical Group of MS
Putter Nonsense
Renasant Bank
Renasant Insurance, Inc.
S&S Recovery
The L Group
Trane Heating and Cooling Solutions

Top: Pictured is Team Paint Plus Construction, the Championship winner. The team included (left to right) Kevin Connor, J.T. Blair, John Thompson and Scott DeLoach.

Middle: Pictured is Team Howard Industries (left to right) Quint Raper, Steven Tiller, Bennet Witcher, and Justin Ferguson. They won the First Flight.

Bottom: Pictured is Team Magee Enterprises, Inc. (left to right) Dr. Larry Webster, Dr. Luke Jones, John Shows and Dewayne Magee. They won the Second Flight.

Upgraded Athletics Facilities Shine

During the 2022-2023 sport seasons, many of Holmes' athletic facilities received long overdue upgrades. These improvements will last for decades, better serving our current athletes, and helping to recruit future Bulldogs. Even though some facilities suffered damage in last year's tornado, progress was not halted.

The softball field was the first to be turfed at Holmes, and the team was able to play some spring games on the field. The pressbox was built prior to the 2022 season. New LED lights with special features were installed for the 2023 season along with a new sound system.

Ras Branch Field, where the Bulldogs play football, was converted from a grass field to turf just before the last two home games of the 2022 season. New LED lights with special features add to the crowd experience. Upgrades were also made to the concession stand by adding new windows and doors.

Charlie Donald Field, where the Bulldogs play baseball, has also been turfed, and the Bulldogs will play their first regular season game in early

2023. New LED lights are being installed on the field, and a new video scoreboard is being added behind left field. The scoreboard will include a new sound system to improve the fan experience.

New HVAC systems and a roof were added to the Dr. A.A. Derrick Field House during the fall semester to keep the football team nice and cool after practices and games.

The tennis courts suffered tornado damage, but they have also been revitalized. New fencing has been installed and Holmes branded windscreens will arrive soon.

New to the Goodman Campus is a 20,284 square foot athletic training facility located in the former maintenance shop near the baseball and softball fields. Athletes began training in the fully renovated facility in Fall 2022. Some of the features of the training facility include turfed batting/hitting cages and a 7,159 square foot state-of-the-art weight room that will be used by all Holmes athletes. This unbelievable building transformation improved the overall appearance of the campus. The facility has curb

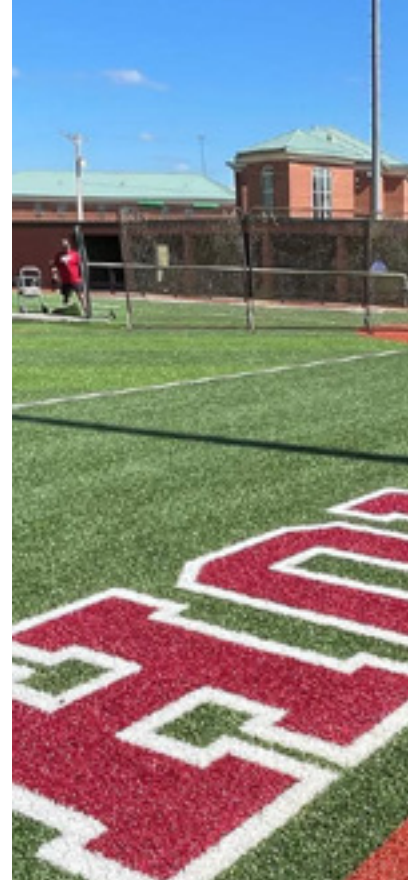
appeal that has to be seen in person to be fully appreciated.

The exterior of Frank Branch Coliseum has also received illuminated signage that will shine brightly to welcome fans to basketball games at night.

Construction has begun on the 6,000 square foot soccer field house on the Ridgeland Campus, which houses both the men's and women's soccer teams.

Also receiving a long-overdue face lift is the facade of the baseball field house. Plans are underway to add a fresh coat of paint to the building, and signage that will identify the property as Holmes Baseball from Highway 14.

The future is looking bright for Bulldog Athletics, and we want you to continue to be a part of the experience. We invite you to come see these improvements and look forward to seeing you at home games! If you can't make it to campus to support the Bulldogs, but would still like to support Holmes Athletics, please donate today by contacting Dr. Lindy McCain at (662) 472-9017 or lmccain@holmescc.edu.







In the Wake of the Storm

An EF-1 tornado ripped through the Goodman Campus on March 22 causing damage in the millions.

Nearly every building and athletic facility suffered catastrophic damage during the tornado. Vehicles belonging to students and staff also were damaged.

The College was proactive on the morning of the storm and cancelled work and class, sending students to their homes. For the ones who stayed, the College took every precaution with weather sirens on campus and text messaging alert system (Rave) to make students/staff realize the situation was dire, and they must take shelter.

When the tornado passed through the Campus, people emerged from their safe place to find out the campus had been decimated from the storm.

Every roof on the campus had damage, but significantly damage was done to a male dormitory, Carroll Cafeteria and Cook Hall.

Attala Hall, which is located on the north side of campus, just off Highway 14, had its north end roof completely ripped off. Carroll Cafeteria, on the south end of the campus, also suffered major damage as the roof was taken off allowing rain to flow directly into the facility as was Cook Hall on the west side of campus. The tornado peeled back the roof on Cook Hall like a sardine can.

One of the windows was sucked out of the Visual Arts building causing the bricks to fall off the wall. The roof damage on the Science and Math Building was also very visible.

As for the athletic facilities, the Derrick Field House had roof damage, the softball field had the roof taken off the first base dugout and the new turf was raised off its base, the outfield fence was torn down on the baseball field and the first base dugout was lifted up four inches from its base, and a tower on campus fell, taking down the fence and netting from one of the tennis courts. A storage facility near the football practice field was destroyed as well. Several windows were broken out of Frank Branch Coliseum.

Trees on the campus were also destroyed and power poles were also taken down.

The College wasted no time getting the cleanup started as tree companies began rolling in to clear paths for all essential services to be able to work on campus. Electric companies from all over the Southeast eventually arrived on campus to get the power turned back on and roofing companies arrived to put on temporary roofs so the College could begin functioning as well.

To get the campus back open after power had been restored, Aladdin brought in a food truck for food service and other local food trucks came to campus to provide food service to students and staff.

To this point, several permanent roofs have been replaced but there is still work to do. Athletic facilities have been restored to service as well, but there are still things to do to get the campus back to full service.



Current Giving Opportunities



The STEM Major Project

Developed by Holmes to renovate STEM facilities with cutting-edge technology while incorporating activities and programs to promote STEM awareness, enrollment and degree completion.



Holmes CC License Plate

Show your pride wherever you drive! The Holmes Community College Development Foundation has launched a new opportunity for Mississippi residents, especially alumni, employees and friends to show their support of Holmes through their daily travels.



NEH Infrastructure and Capacity Building Challenge Grant

The Foundation has a five-year plan to match the National Endowment for the Humanities grant with \$231,849, totaling \$463,698 over the life of the grant. These funds will provide the means for renovating the interior spaces of McMurrough Library in Goodman.



Kroger Community Rewards

If you have not already indicated an organization for Community Rewards through Kroger, we would love for you to choose Holmes. It is easy to enroll through your Kroger account. Once you sign into your account, all you need to do to enroll is enter our code: **MW962** for The Holmes Community College Development Foundation.



Join the Alumni 360 Online Community

Introducing Alumni 360, Holmes' new online alumni community. Scan the QR code to join. Through this software, you can find other alumni, stay in the know with Holmes events and campaigns, even promote your business! Spread the word to your fellow alumni!



Purchase a Chapel Courtyard Brick

We invite you to add your personal touch to the chapel on the Hill on the Goodman Campus. You can purchase a customized paver to celebrate a graduation or milestone, honor a classmate, family member, or influential person in your life, while creating a meaningful reminder of your affection for Holmes.

Holmes Community College does not discriminate on the basis of race, color, religion, national origin, sex, age, disability or genetic information in its educational programs and activities, employment practices, or admissions processes. The following administrators have been designated to handle inquiries regarding the non-discrimination policies of Holmes Community College: Inquiries regarding compliance with Title VI, ADEA, and Title IX are coordinated by the Vice President for Compliance and Institutional Research, Henry B. McClellan Administration Building, Post Office Box 369, Goodman, MS 39079, Phone: 662-472-9429, compliance@holmescc.edu. Inquiries regarding compliance with Section 504 and ADA are coordinated by the Disability Student Services Coordinator, M.R. Thorne Vocational-Technical Building, Room 110, Post Office Box 369, Goodman, MS 39079, Phone: 662-472-9088, disabilitysupportservices@holmescc.edu.

