




FACTBOOK

2021

Holmes Community College



Holmes Preface



The **Holmes Community College 2021 Factbook** contains information relevant to planning, evaluation, and assessment. In addition, this publication provides current descriptive information about Holmes Community College for administrators, faculty, staff, and students. Enrollment data for the **2021 Factbook** is obtained from the six-week Mississippi State Board for Community Colleges' Audit.

The Office of Institutional Research and Effectiveness prepares the annual document with input from various divisions and departments of the college. Data is derived from administrative reports completed at specific times throughout the academic year and relies on the data reported as well as data source.

The Office of Institutional Research and Effectiveness welcomes comments and suggestions regarding this publication to enhance future editions as presented on the last page of the **Holmes Community College 2021 Factbook**.

Holmes Community College Locations

Goodman Campus

1 Hill Street / P.O. Box 369
Goodman, MS 39079
(662) 472-2312

Grenada Campus

1060 J K Avert Drive
Grenada, MS 38901
(662) 226-0830

Ridgeland Campus

412 West Ridgeland Avenue
Ridgeland, MS 39157
(601) 856-5400

Attala Center

620 West Jefferson Street
Kosciusko, MS 39090
(662) 290-0808

Yazoo County Economic Development and Education Center

637 East 15th Street
Yazoo City, MS 39194

TABLE OF CONTENTS

Institutional Profile.....	4
Vision, Mission, and Strategic Initiatives.....	5
Vision, Mission, and Strategic Initiatives.....	5
College and Campus Information.....	6
Accreditation.....	9
Program Pathways.....	10
Institutional Characteristics.....	13
Awarded Degrees and Certificates.....	13
Enrollment.....	14
Student Characteristics.....	15
Fall Enrollment by Residence.....	16
Mississippi Demographic Data Comparison.....	17
Five-Year Fall Enrollment Trend.....	18
Five-Year Fall Enrollment Trend of MS.....	18
Full-Time Faculty Characteristics.....	18
Development Foundation.....	18
Library Resources and Expenditures.....	19
Workforce Development Training Activities.....	20
Revenue by Source (FY 2020-21).....	21
Five-Year Trend by Source.....	21
Expenditures by Function (FY 2020-21).....	22
Five-Year Trend by Function.....	22
Organizational Charts.....	23
Evaluation and Contact Information.....	34

INSTITUTIONAL PROFILE

Holmes Community College, from its humble beginnings as Holmes County Agricultural High School, has grown into one of the largest and best community colleges in the state of Mississippi serving thousands of students.

In 1922, after Holmes County Agricultural High School had been in operation for 11 years, the legislature made it legal for agricultural high schools to add two years of college work, and Holmes Junior College opened its doors in 1925 offering the first year of college to students in Holmes and the surrounding counties. During the 1928-29 school year, the second year of college work was added making Holmes Junior College eligible to award the Associate of Arts degree.

Financial support for Holmes Junior College has grown from the original county of Holmes to include eight other counties - Attala, Carroll, Choctaw, Grenada, Madison, Montgomery, Webster and Yazoo. The state of Mississippi also serves as a major funding source for the College.

As the main campus grew and added needed programs, Holmes underwent an extensive study, which showed the need to address the educational needs in the other counties in the Holmes district, especially the northern and southern ends. In 1985, Holmes began building facilities and offering classes at both Grenada and Ridgeland.

Holmes Junior College became Holmes Community College beginning with the 1989 school year after the Board of Trustees decided that having “community” in the name would more accurately reflect the comprehensive and multi-faceted mission of the modern two-year college. The State Board for Community and Junior Colleges (now the Mississippi Community College Board) approved the name change in December 1988.

The Attala Center in Kosciusko opened its doors in 1997 to meet the needs of the residents in Attala and surrounding counties, and the Yazoo Center, located in the Yazoo Economic Development and Education Center, opened its facilities in 2016 to provide extended services for residents of Yazoo City.

Holmes Community College recognizes that emerging technologies are changing the methods of instructional delivery to include eLearning programs, such as interactive classrooms, remote instruction, internet courses and other electronic-based teaching/learning activities. Holmes’ primary means of delivering eLearning classes are by the Mississippi Virtual Community College in both provided and hosted courses as well as through video conferencing via the Community College Network.

The college offers programs district-wide that allow students to earn associate degrees, certificates, and/or transferability to four-year institutions. At the same time, Holmes provides adult basic education, workforce training, and high school equivalency preparation and assessment.

VISION, MISSION, AND STRATEGIC INITIATIVES

Vision

Holmes Community College will be a leader in education by serving as a comprehensive, community-oriented institution delivering flexible, responsive programs of the highest quality.

Mission

Holmes Community College, a comprehensive public institution located in Central Mississippi, provides innovative educational and cultural opportunities to its constituents through campus-based and distance education programs. The college seeks to prepare its students for university transfer, productive employment, and lifelong learning by offering an Associate of Arts degree, Associate of Applied Science degree, technical certificates, and career certificates as well as workforce training. Holmes, whose primary commitment is to excellence in all areas, offers affordable, equal access to higher education in an attractive, secure, multi-campus environment.

Revised by the Board of Trustees February 2017

Strategic Initiatives

- I. Maintain an environment for continuous accessibility and improvement of the quality of education.
- II. Continue to acquire and support appropriate emerging technologies for curricular, instructional and administrative processes.
- III. Improve college personnel/student interactions to achieve a higher rate of student success.
- IV. Expand and improve the college's infrastructure in support of student services, instructional programs, administrative processes and community services.
- V. Improve the college's image by enhancing public relations through communication.
- VI. Expand and improve educational partnerships with business/industry and appropriate agencies.

College Information

Location

Holmes Community College operates three campuses and two centers, each found in a nine-county district in Central Mississippi. The main campus is located in Goodman (Holmes County), three miles from I-55, in a rural farming area. The Ridgeland Campus is 45 miles south on I-55 in Ridgeland (Madison County) and is adjacent to Jackson, the state capital, and the state's largest metropolitan area. The Grenada Campus (Grenada County) is approximately 60 miles north of Goodman on I-55 in an area noted for its industrial growth and recreational areas. The Attala Center in Kosciusko (Attala County), 30 miles east from Goodman, is located at the center of the state, and the Yazoo Center, 35 miles southwest from Goodman, is located in Yazoo City (Yazoo County) which is known as the gateway to the Mississippi Delta.

Degrees and Certificates

Holmes Community College awards the following degrees and certificates: Associate of Arts (AA), Associate of Applied Science (AAS), Advanced Technical Certificate, Technical Certificate, and Career Certificate.

Faculty

The college counts 136 full-time faculty members, including 19 who hold a Doctorate degree, five who hold a Specialist degree, 87 who hold a Master's degree, 12 who hold a Bachelor's degree, 11 who hold an Associate degree, and two who hold a Certificate. The 291 part-time faculty members possess all the qualifications expected in a full-time faculty member.

Campus Information

The main emphasis in the organization and administration of Holmes Community College is that it is a single, institutional entity with three campus locations and additional outreach facilities. The same general policies, philosophies of operation, purposes and objectives, as well as the same procedural methods, apply to all locations equally, and exceptions can be made only when based on purely local factors. The standards for the instructional program are the same at all locations. Close departmental coordination among campuses is an essential goal of the college that ensures uniform quality of instruction. The estimated replacement value of the college's physical assets is at least \$46,520,687.

Goodman Campus

The original campus of Holmes Community College, established in 1925, is located in the center of the state at Goodman, Mississippi, in the eastern part of Holmes County. The campus is composed of almost 200 acres with 33 principal buildings. The district administrative offices for the college are located at the Goodman Campus.

This campus offers academic courses for university transfer, technical programs, career programs, and workforce programs and training. Goodman also serves as the college's residential campus and has physical facilities for student activities including varsity sports and performing arts. The president's home is located on this campus. In addition to academic and career-technical curricula, the Goodman Campus offers opportunities for student participation in athletics, band, choral music, art, theatre, publications, and a broad selection of clubs and organizations.

Grenada Campus

The Grenada Campus is located on approximately 14 acres near scenic Grenada Lake and is positioned on I-55 between Memphis, Tennessee, and Jackson, Mississippi. The campus has been fully operational since 1985 and provides opportunities for academic and cultural enrichment along with vocational expansion to meet the demands of the surrounding area.

This campus offers technical programs, academic courses, and workforce training. The campus further serves as a meeting place for a variety of educational workshops, seminars, and conferences. The Corey Forum, with a seating capacity of over 500, provides a venue for the Grenada Arts Partnership and a conference site for numerous groups. Since 2008, the Grenada Campus has partnered with the University of Mississippi Division of Outreach to offer selected undergraduate and graduate degree programs onsite with plans for future growth.

Ridgeland Campus

The Ridgeland Campus opened in 1985 in Madison County, one of the fastest developing areas in the state. The campus is located approximately two miles north of the city of Jackson and a half-mile north of the Natchez Trace Parkway and I-55. The campus is situated on 80 acres of land at the intersection of West Ridgeland and Sunnybrook Road.

This campus offers instruction of academic courses for university transfer and career/technical programs that lead to employment following graduation. Ridgeland also houses the college's central office for Workforce Development programs and training, which improve the skills of existing employees, prepare students for a different career, and equip students to enter the workforce.

Attala Center

The Attala Center is a modern education facility of approximately 75,000 square feet located less than one mile from Kosciusko's historic downtown square. In addition to academic offerings, the center is home to several career and technical programs and works in conjunction with business and industry to coordinate workforce programs to meet their individual training needs.

The coordination of the college's Adult Basic Education and high school equivalency preparation classes are also housed here. The Attala Center further serves as a meeting place for a variety of workshops, seminars, and conferences for the community.

Yazoo County Economic Development and Education Center

This modernized educational facility is comprised of classroom and computer lab space located in the Yazoo Economic Development and Education Center in Yazoo City. The Yazoo Center provides academic courses, coordinates workforce program training, offers proctoring for eLearning, and functions as a meeting place for workshops and seminars for the college and local county agencies.



ACCREDITATION

Holmes Community College is accredited by the Southern Association of Colleges and Schools Commission on Colleges to award associate degrees and certificates. Contact the Southern Association of Colleges and Schools Commission on Colleges at 1866 Southern Lane, Decatur, Georgia, 30033-4097 or call (404) 679-4500 for questions about the accreditation of Holmes Community College.

Additionally, Holmes Community College has specific programs (see table below) that are accredited and/or approved through state, regional, and national organizations as well as accrediting agencies.

Program	Accrediting Agency	Most Recent Review	Next Scheduled Review
College Accreditation	The Southern Association of Colleges and Schools Commission on Colleges	Reaffirmation 2016 Fifth-Year 2011	Reaffirmation 2026 Fifth-Year 2021
Associate Degree Nursing (ADN)	Accreditation Commission for Education in Nursing, Inc. and by the Board of Trustees of Institutions of Higher Learning	Spring 2019	Spring 2027
Cosmetology	Mississippi State Board of Cosmetology	Spring 2017	Fall 2021
Emergency Medical Services (EMS) Paramedic	Committee on Accreditation for Emergency Medical Services Professions	Fall 2018	Fall 2025
Massage Therapy	Mississippi State Board of Massage Therapy	Fall 2020	Fall 2021
Occupational Therapy Assistant (OTA)	Accreditation Council for Occupational Therapy Education	Fall 2014	Fall 2024
Physical Therapy Assistant (PTA)	Commission on Accreditation in Physical Therapy Education (CAPTE)	Spring 2017	Spring 2022
Practical Nursing	Mississippi Board of Nursing	Fall 2017	Fall 2025
Surgical Technology	Commission on Accreditation of Allied Health Education Programs (CAAHEP) upon the recommendation of the Accreditation Review Council on Education in Surgical Technology and Surgical Assisting (ARC-STSA)	Spring 2015	Spring 2025

Program Pathways

Academic Pathways

Arts/Humanities/Language Pathway

Art/Music Pathway

Art
Entertainment Industry Studies
Music

Humanities Pathway

History
Philosophy or Religious Studies

Language Pathway

Communications/Journalism/Mass
Communications
English
Liberal Arts
Spanish

Business Pathway

Accounting
Business Administration
Economics
Finance
Management
Marketing

Education Pathway

Child Development/Child Care &
Family Education
Elementary/Special Education

Secondary Education Pathway

Biology/Science
Chemistry/Physical Science
English
Mathematics

Music – Instrument
Music – Piano
Music – Voice
Physical Education/Kinesiology
Physics
Social Studies

General College Pathway

General College Studies

Health Sciences Pathway

Biological Science
Pre-Allied Health

Dentistry Pathway

Pre-Dental
Pre-Dental Hygiene

Health-Related Pathway

Health Informatics & Information
Management
Health Sciences
Pre-Medical Laboratory Science
Pre-Occupational Therapy
Pre-Physical Therapy
Pre-Radiologic Sciences

Medicine Pathway

Pre-Medical
Pre-Nursing

Pharmacy Pathway

Pre-Pharmacy

Veterinary Pathway

Pre-Veterinary
Pre-Veterinary Medical Technology

Career Technical Pathways

Health Science Programs Pathway

Associate Degree Nursing Program
Emergency Medical Sciences/Basic Program
Emergency Medical Sciences/Critical Care Program
Emergency Medical Sciences/Advanced EMT
and Paramedic Program
Mortuary Science Program
Occupational Therapy Assistant Technology
Program
Physical Therapist Assistant Program
Practical Nursing Program
Surgical Technology Program

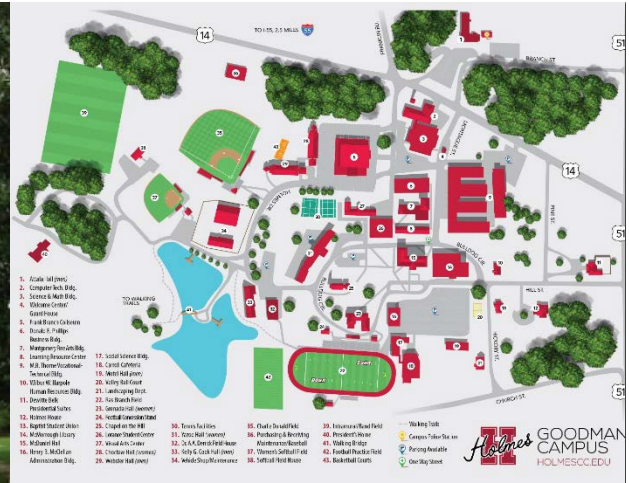
Industrial Studies Pathway

Automotive Technology
Collision Repair Technology
Engineering Technology
Architectural Engineering Technology
Construction Technology
Drafting & Design Technology
Industrial Engineering Management Technology
Industrial Technology
Interior Design Technology
Heating/Vent/AC/Refrigeration Technology

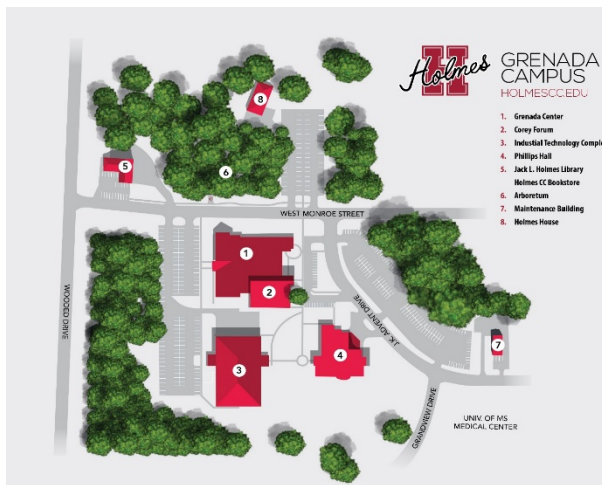
Industrial Mechanics and Maintenance Technology
Industrial Maintenance Mechanics
Industrial Maintenance Technology
Precision Machining Technology
Welding & Cutting Technology

Professional Studies Pathway

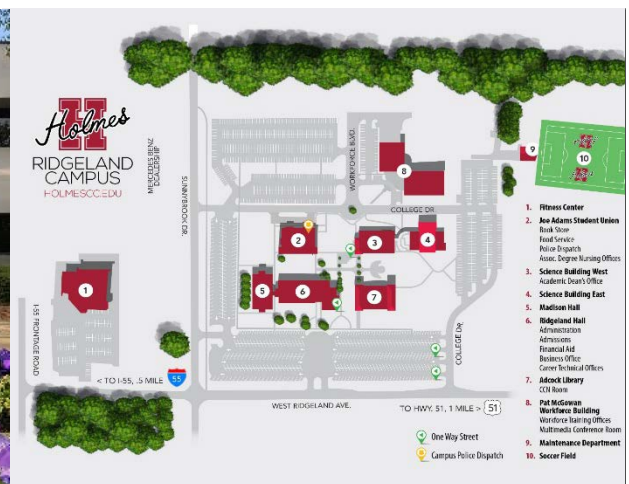
Business Technology
Accounting Technology
Administrative Office Technology
Billing & Coding Technology
Business Management Technology
Medical Office Technology
Conservation Law Enforcement Technology
Cosmetology
Criminal Justice Administration Technology
Forest Technology
Information Systems Technology:
Computer Engineering Technology
Computer Networking Technology
Software Engineering Technology
Paralegal Technology



McDaniel Hall, Goodman Campus



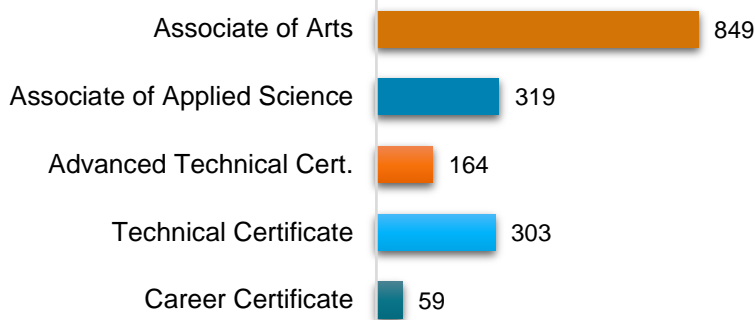
Corey Forum, Grenada Campus



Ridgeland Hall, Ridgeland Campus

INSTITUTIONAL CHARACTERISTICS

Awarded Degrees and Certificates (1,694 Total)



Top Pathways of Degrees Awarded for 2020-2021

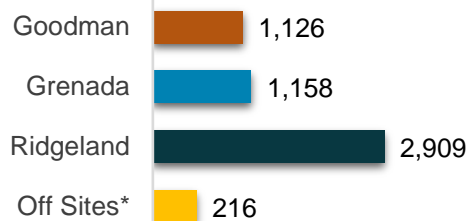
AA Pathway Programs	Count	AAS Pathway Programs	Count
Pre-Nursing (BS)	130	Associate Degree Nursing (ADN)	107
General College Studies	110	Billing and Coding Technology	23
Business Administration	74	Medical Office Technology	22
Criminal Justice	49	Paralegal Technology	18
Psychology	49	EMS – Paramedic	16
Elementary/Special Education	42	Occupational Therapy Assistant Technology	15
Social Work/Sociology	34	Physical Therapist Assistant	15
Biological Science	27	Architectural Engineering Technology	13
Pre-Allied Health	21	Industrial Technology	11
Accounting	20	Business Management Technology	10
Pre-Medical and Pre-Physical Therapy	17	Surgical Technology	10



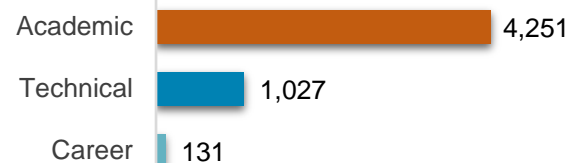
Enrollment

Student Enrollment (5,409 Students Total)

by Campus



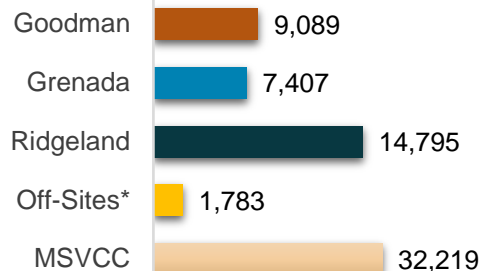
by Curriculum



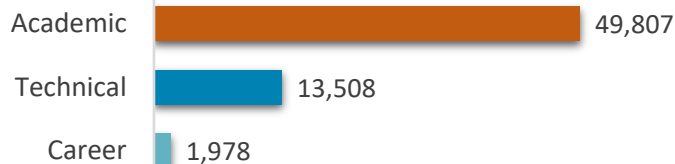
* Attala Center, Yazoo Center, F2F DEDC

Credit Hours Enrollment (65,293 Hours Total)

by Campus



by Curriculum



* Attala Center, Yazoo Center, F2F DEDC

Top 15 Pathways Enrollment

Pathway Program	Count
Pre-Nursing (BS)	591
General College Studies	451
Associate Degree Nursing	287
Business Administration	251
Pre-Allied Health	142
Elementary/Special/Secondary Education	135
Psychology	129
Practical Nursing; Pre-Physical Therapy	103
Social Work/Sociology	98
Pre-Medical	97
Criminal Justice	95
Accounting; Biological Science	76
EMS – Paramedic	74
Engineering Civil/Mech/Aero; Welding and Cutting Technology	73
Billing and Coding Technology	70



Student Characteristics (5,409 Students Total)

Classification Level *

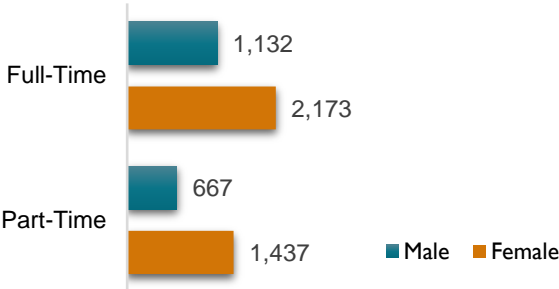


* Sophomore (30+ semester hours)
Freshman (0-29 semester hours)

Enrollment Status



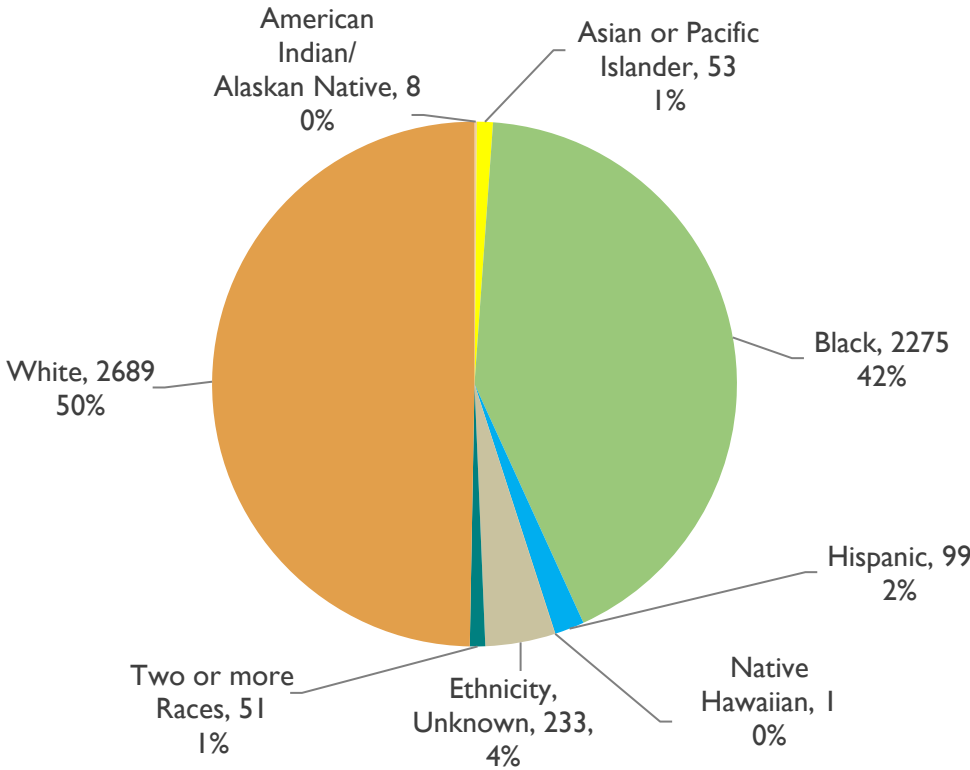
Gender Comparison



Residency Status



Ethnicity



Fall Enrollment by Residence

Fall 2020 Enrollment by MS Counties

(5,409 Students Total)

District (3,357) 62%

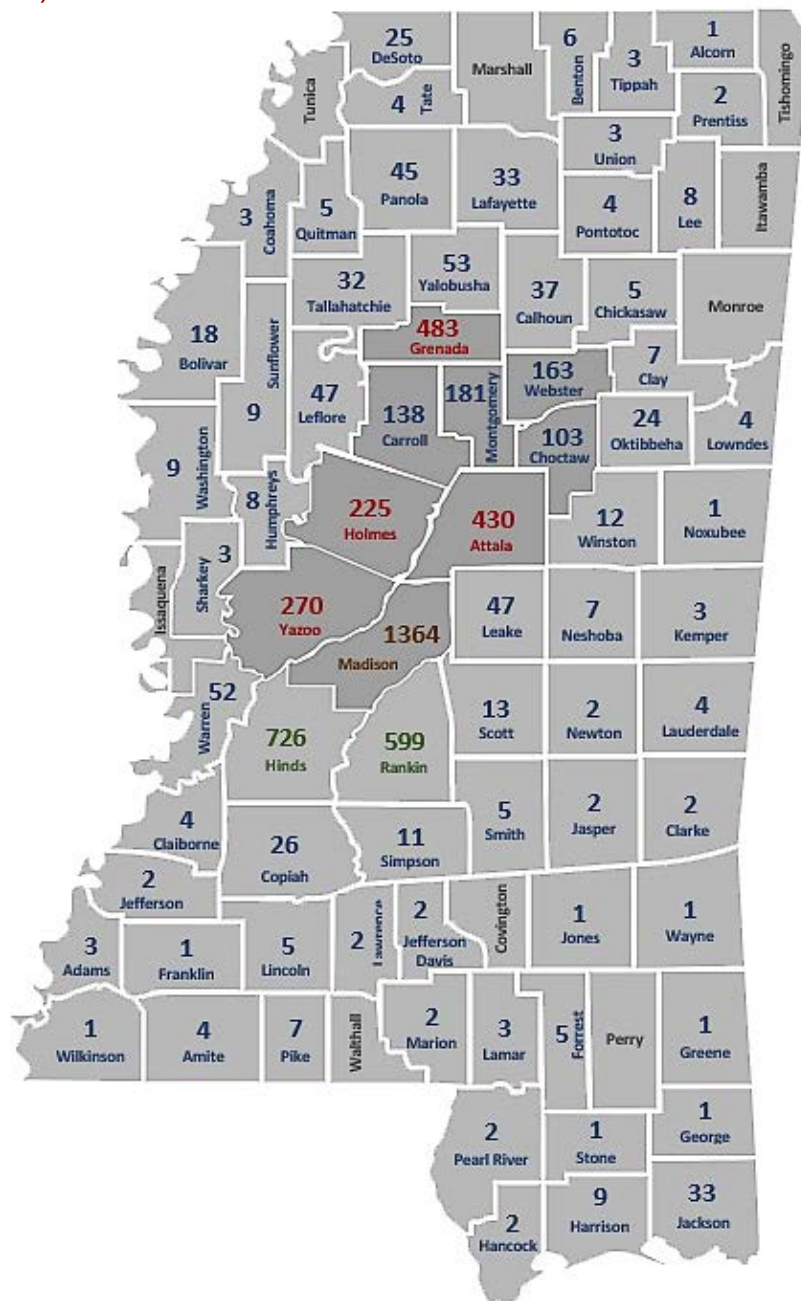
Out of District 37%

Hinds 13%

Rankin 11%

Other 13%

Out of State 1%



Mississippi Demographic Data Comparison 2021

Demographics		Nation	Mississippi
Populations	(State Rank: 34)	328,239,523	2,976,149
Per Capita Income	(State Rank: 51)	\$35,672	\$25,301
Poverty Rate		12.3%	19.6%
Age Distribution			
Up to 4		5.9%	6.0%
5 to 14		12.5%	13.5%
15 to 19		6.5%	7.2%
20 to 24		6.6%	6.7%
25 to 44		26.7%	25.1%
45 to 64		25.4%	25.0%
64 and older		16.5%	16.4%
Racial and Ethnic Distribution			
American Indian		0.9%	0.5%
Asian		5.7%	1.0%
Black		12.8%	38.0%
Pacific Islander		0.2%	0.0%
White		72.0%	58.0%
More than One Race		3.4%	1.5%
Hispanic (may be any race)		18.4%	3.0%
Other		5.0%	1.0%
Educational Attainment of Adults			
8th grade or less		4.8%	4.6%
Some High School, no Diploma		6.6%	10.1%
High-School Diploma		26.9%	30.2%
Some College, no Degree		20.0%	22.3%
Associate Degree		8.6%	10.5%
Bachelor's Degree		20.3%	13.7%
Master's Degree		9.1%	6.3%
Doctoral Degree		1.5%	1.0%
Professional Degree		2.2%	1.4%
New High-School Graduates			
Total for 2020-21		3,745,990	30,630
Projected Change: 2021-22 to 2030-31		- 1.5%	-9.0%
High-School Dropout Rate		2.2%	5.7%
Average ACT Score	(Holmes CC: 19.6)	20.6	18.2
Enrollment Highlights			
Public 4-Year Institutions		9,106,573	77,228
Public 2-Year		5,398,099	71,132
Private 4-year, Nonprofit		4,118,370	17,642
Private 2-Year, Nonprofit		44,644	n/a
Private 4-Year, For-Profit		841,439	625
Private 2-Year, For-Profit		156,301	342
Degrees Awarded			
Associate		1,036,714	13,632
Bachelor's		2,013,544	16,608
Master's		838,560	5,216
Doctorate		187,910	1,531
Average Pay of Full-Time Faculty of 2-Year Colleges			
Public		\$71,368	\$53,342
Private Nonprofit		\$57,869	n/a

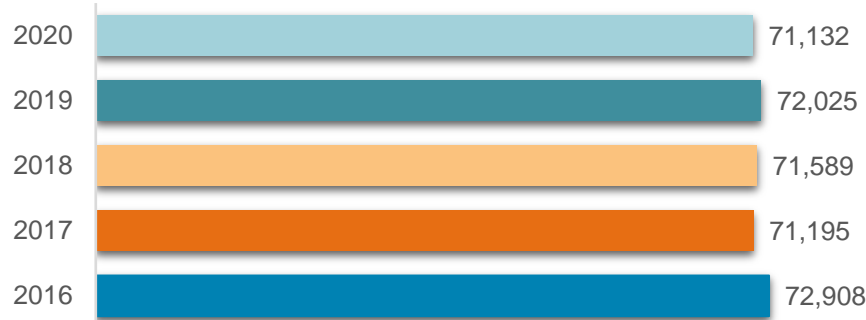
The Chronicle of Higher Education Almanac 2021-22, Vol. 67, No. 25, August 20, 2021

Five-Year Fall Enrollment Trend of Holmes CC

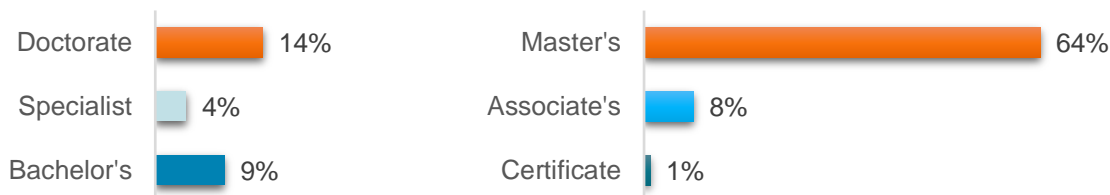


Five-Year Fall Enrollment Trend of MS Two-Year Public Institutions

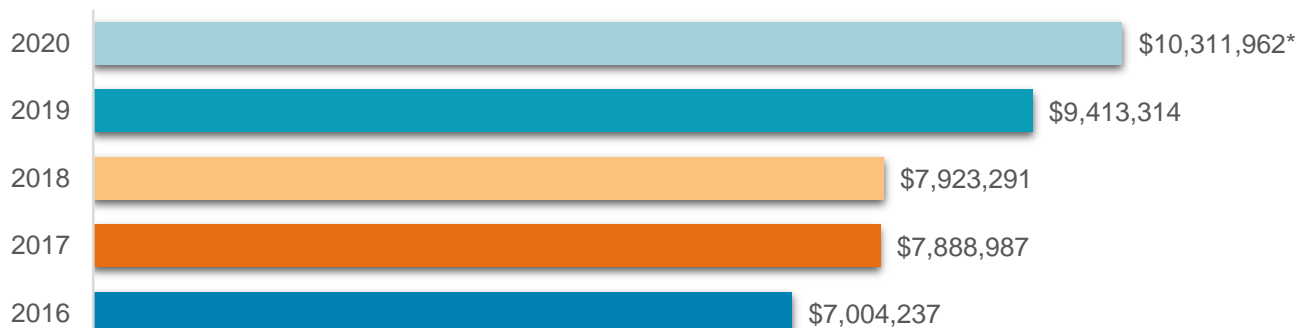
Sources: *The Chronicle of Higher Education Almanac*, 2016-2017 through 2021-2022



Full-Time Faculty Characteristics (136 Faculty Total)



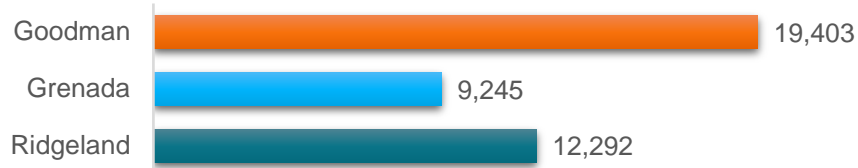
Development Foundation



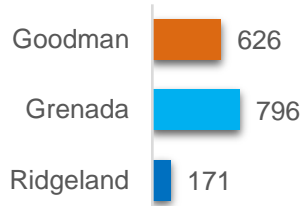
(Note: 47% increase since 2016; *Pending Audit)

Library Resources and Expenditures

Library Collections (601,395 Shared eBooks; 642,335 Total)



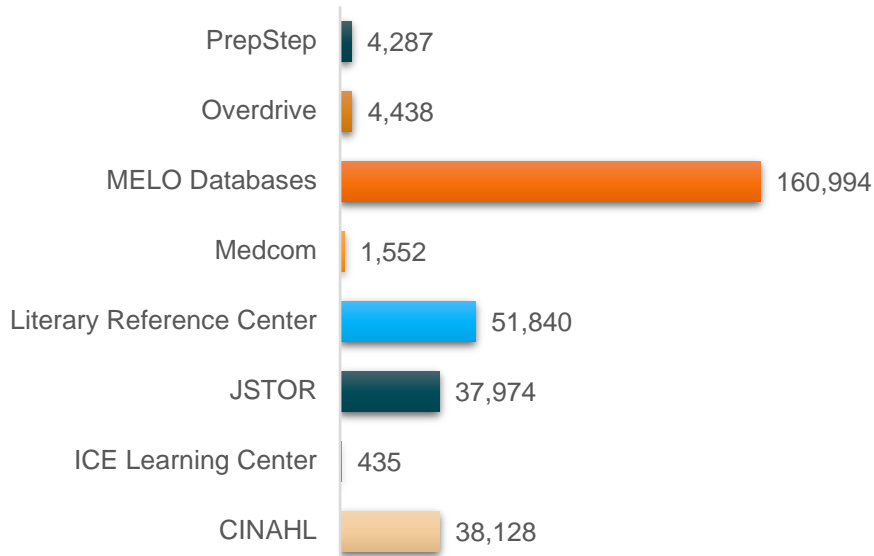
Library Circulations (1,593 Total)



Library Expenditures (\$707,528 Total)

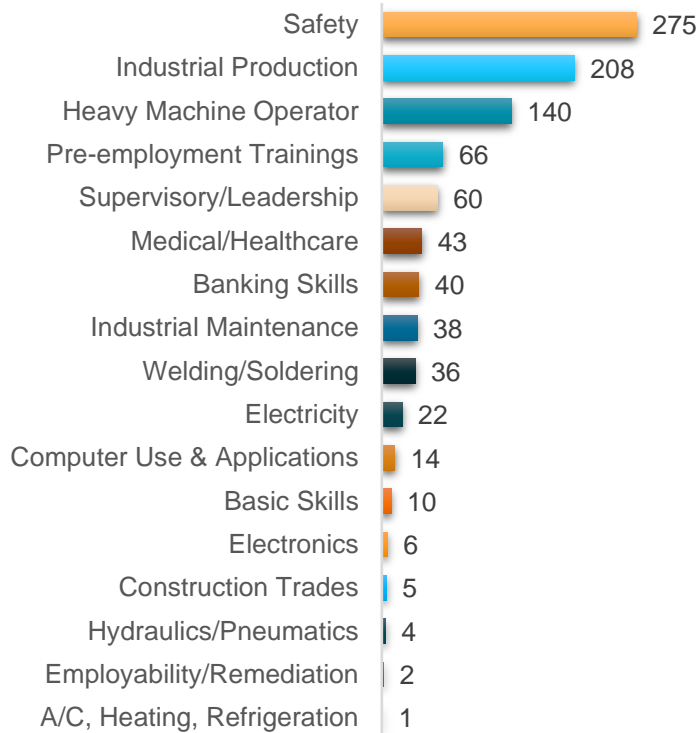


Library Database Usage (3,951,855 EBSCO Discovery; 4,251,503 Total)

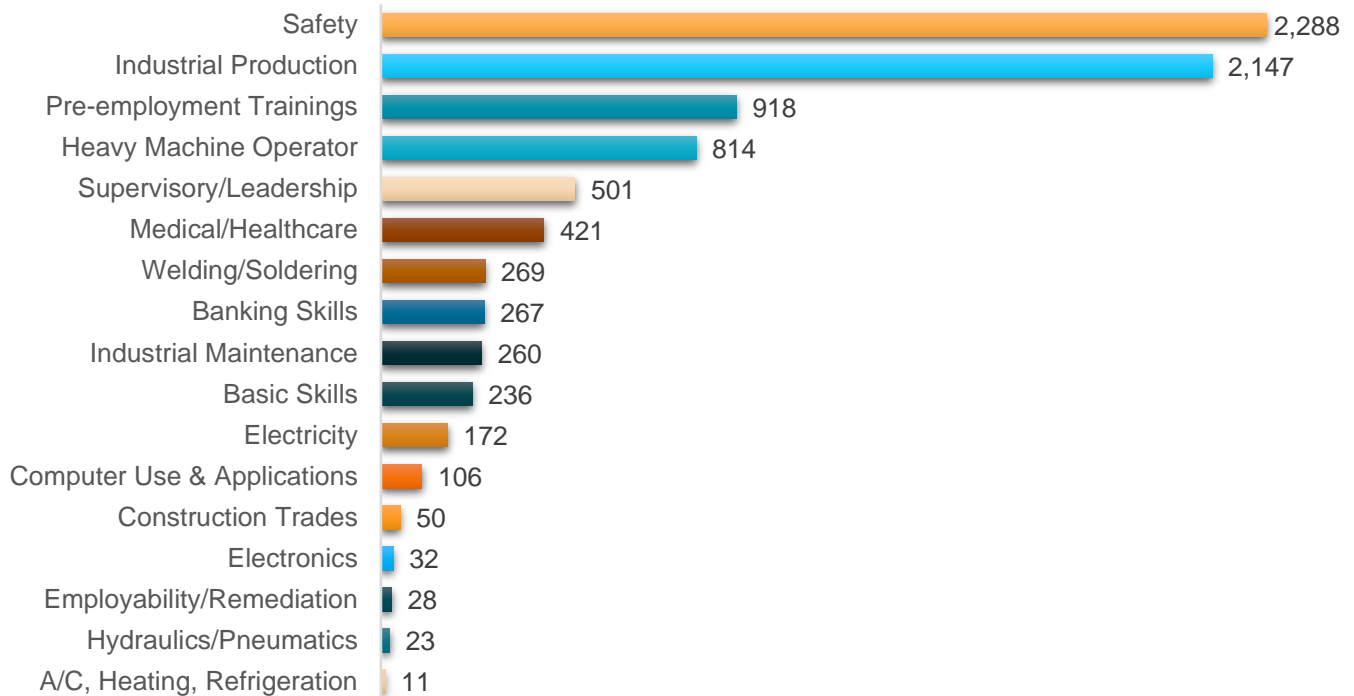


Workforce Development Training Activity Report

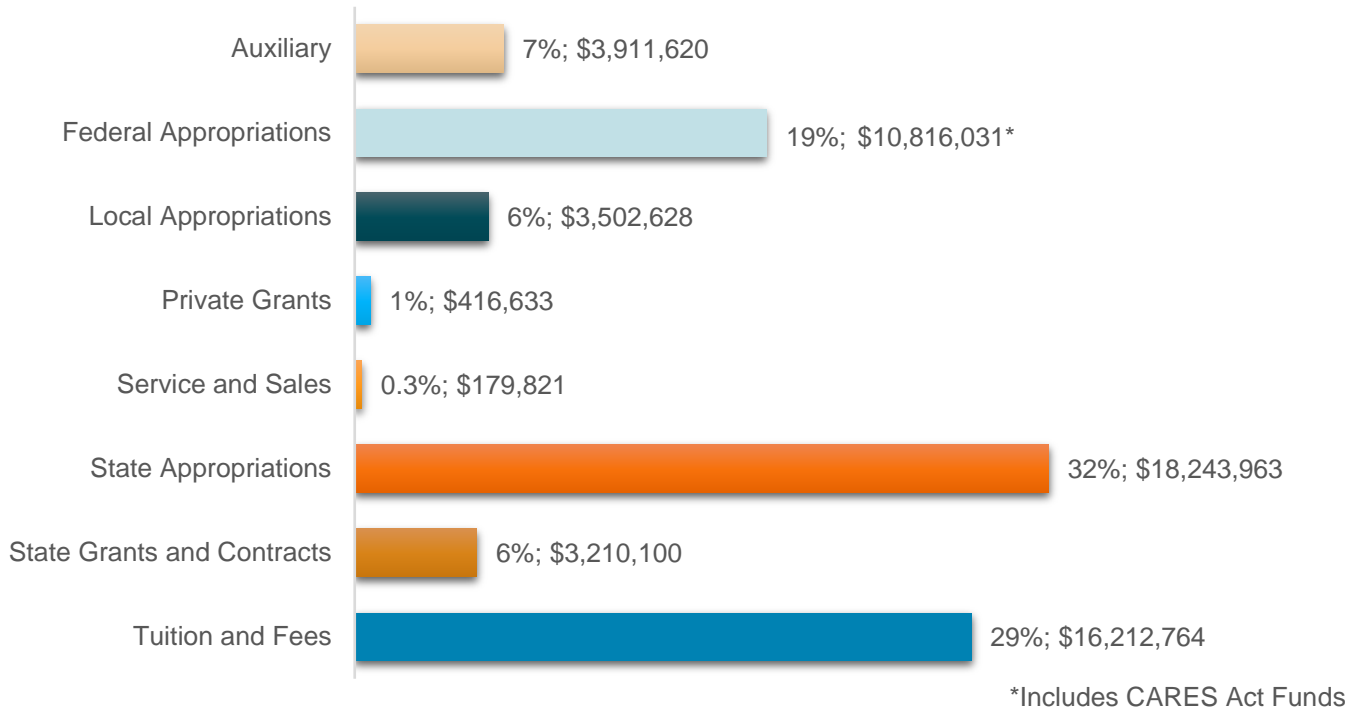
Classes (970 Total)



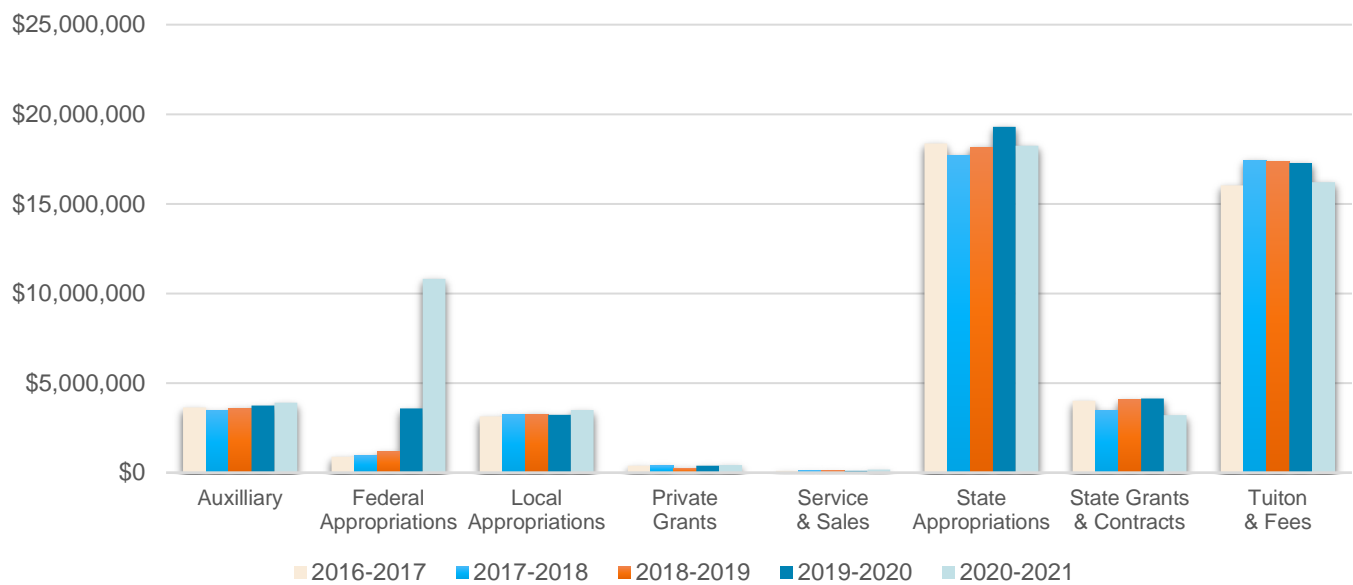
Trainees (8,543 Total)



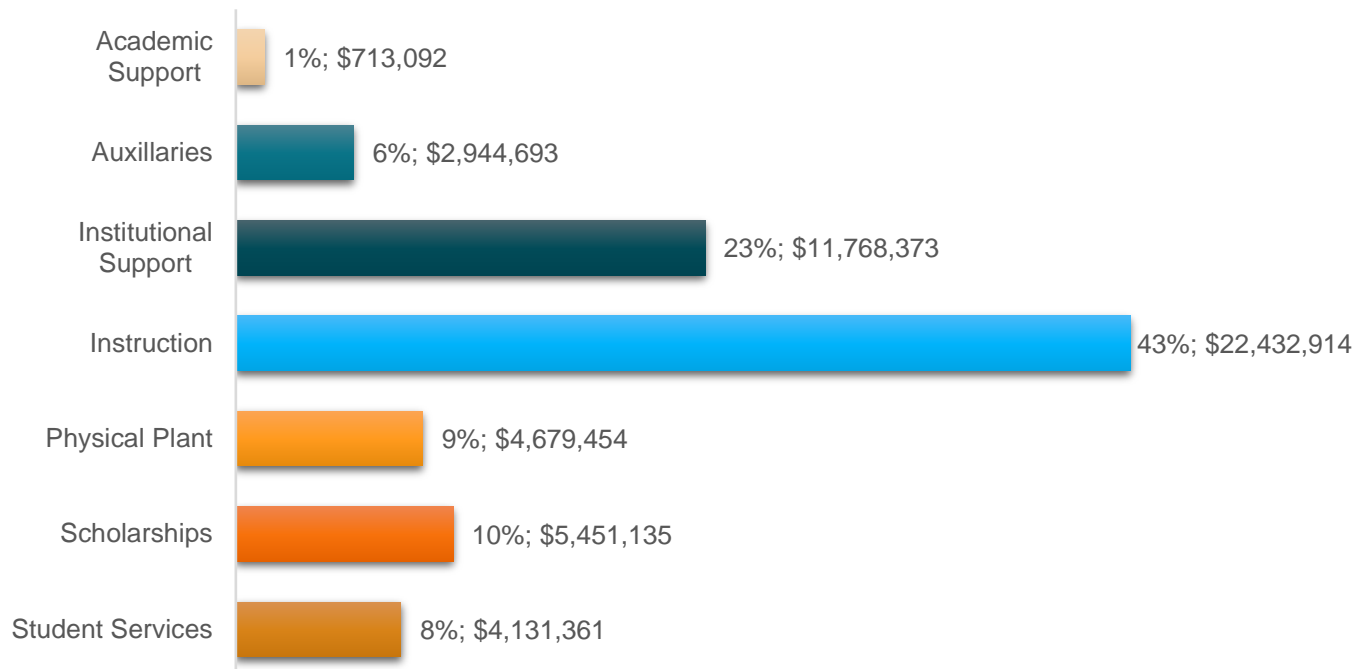
Revenue by Source (FY 2020-21) (\$56,493,560 Total)



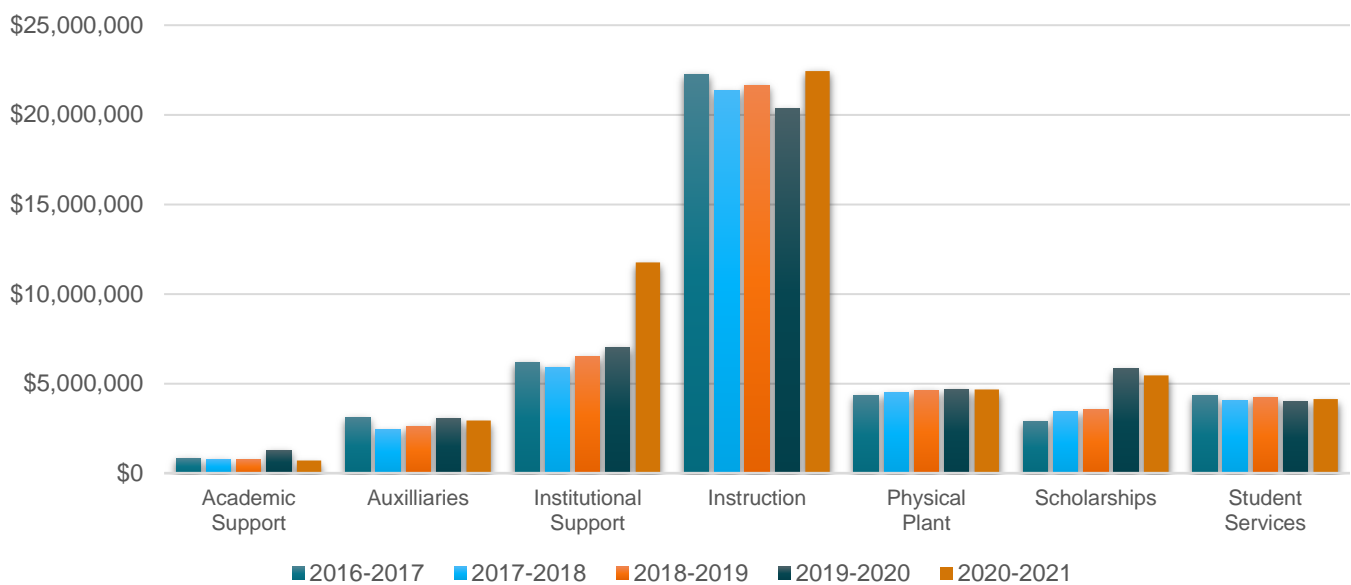
Five-Year Trend by Source



Expenditures by Function (FY 2020-21) (\$52,121,022 Total)



Five-Year Trend by Function

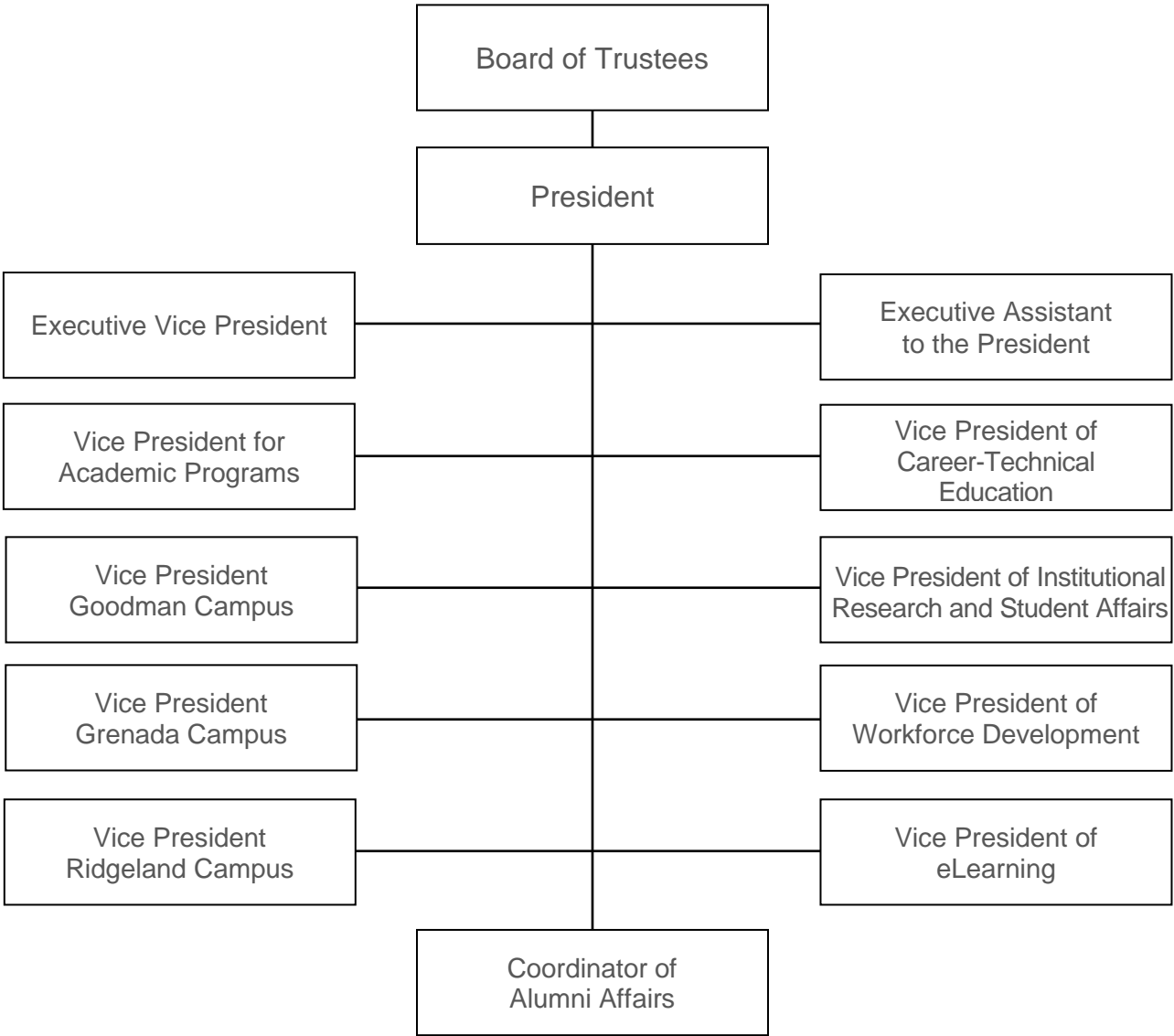


ORGANIZATIONAL CHARTS



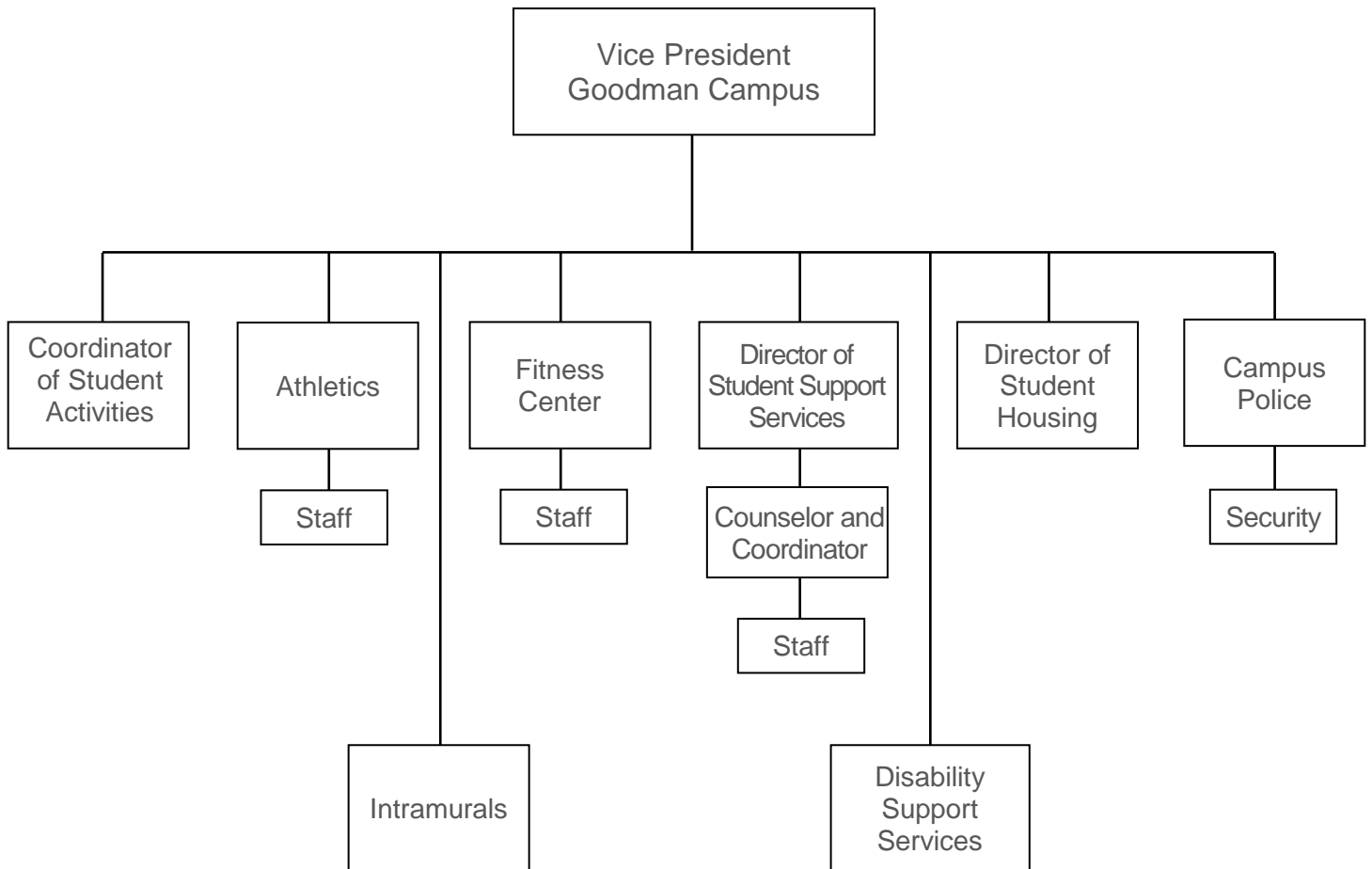
Holmes Community College District

Revised 12/03/20



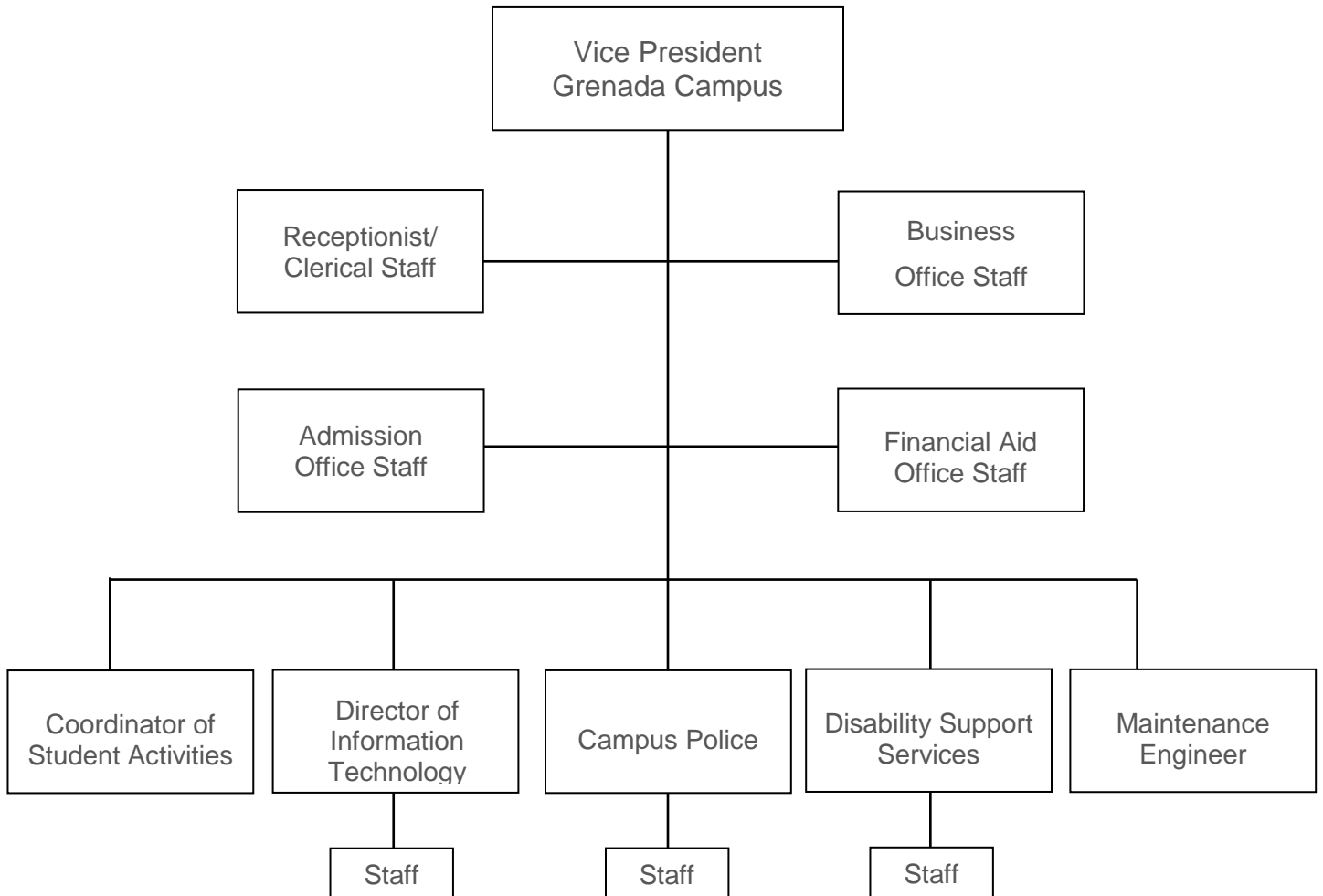
Goodman Campus

Revised 7/1/19



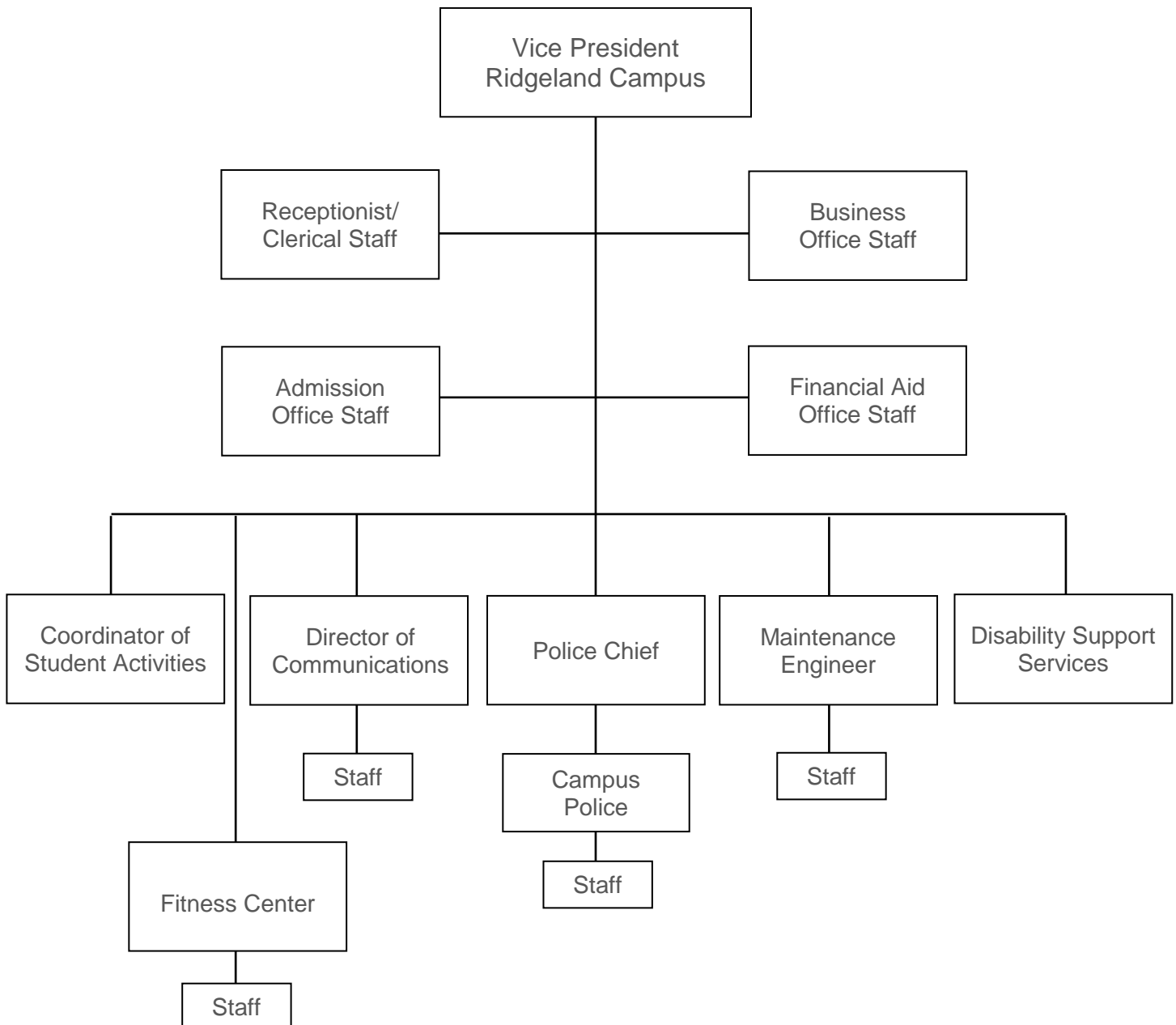
Grenada Campus

Revised 8/7/18



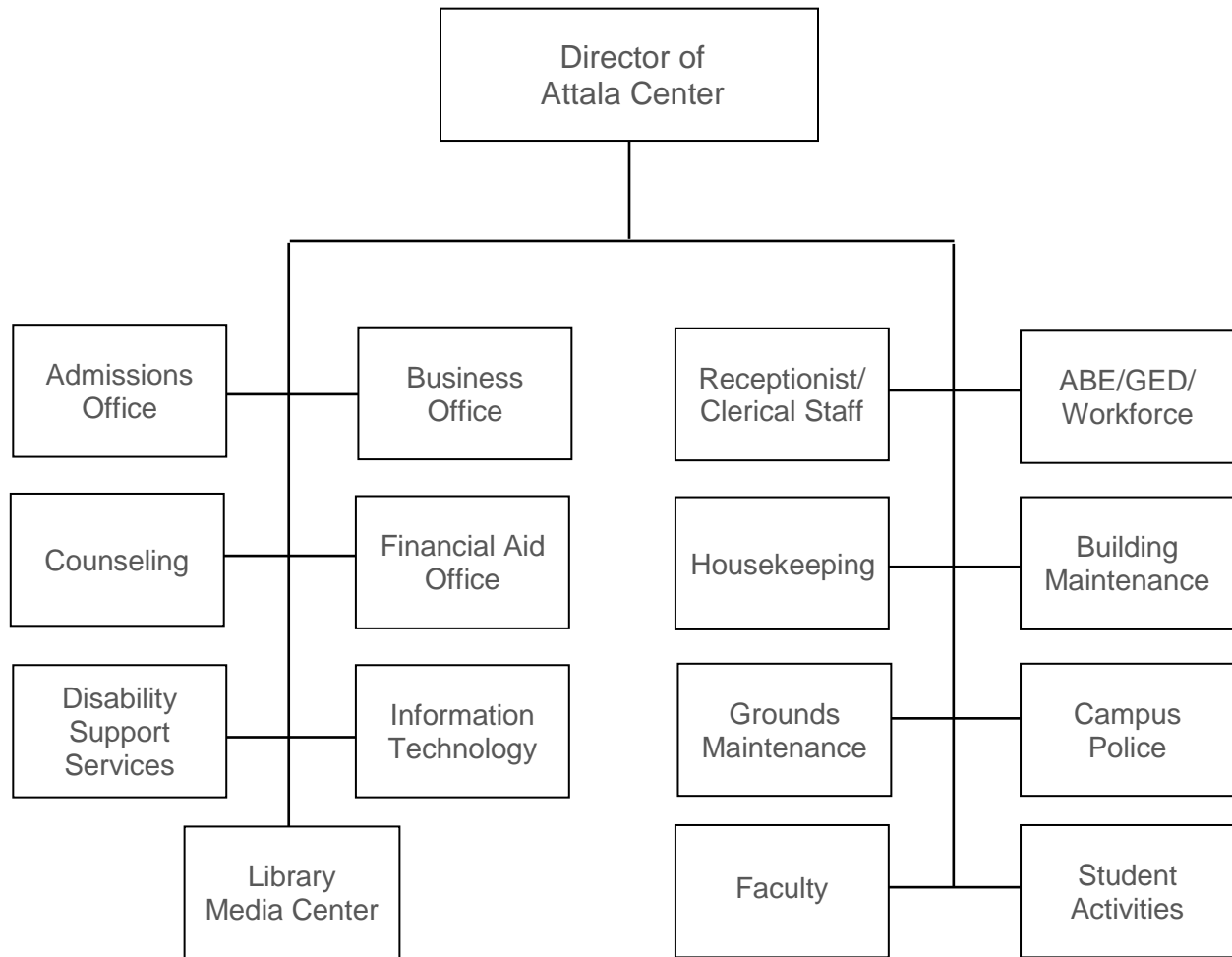
Ridgeland Campus

Revised 8/7/18



Attala Center

Revised 7/1/19

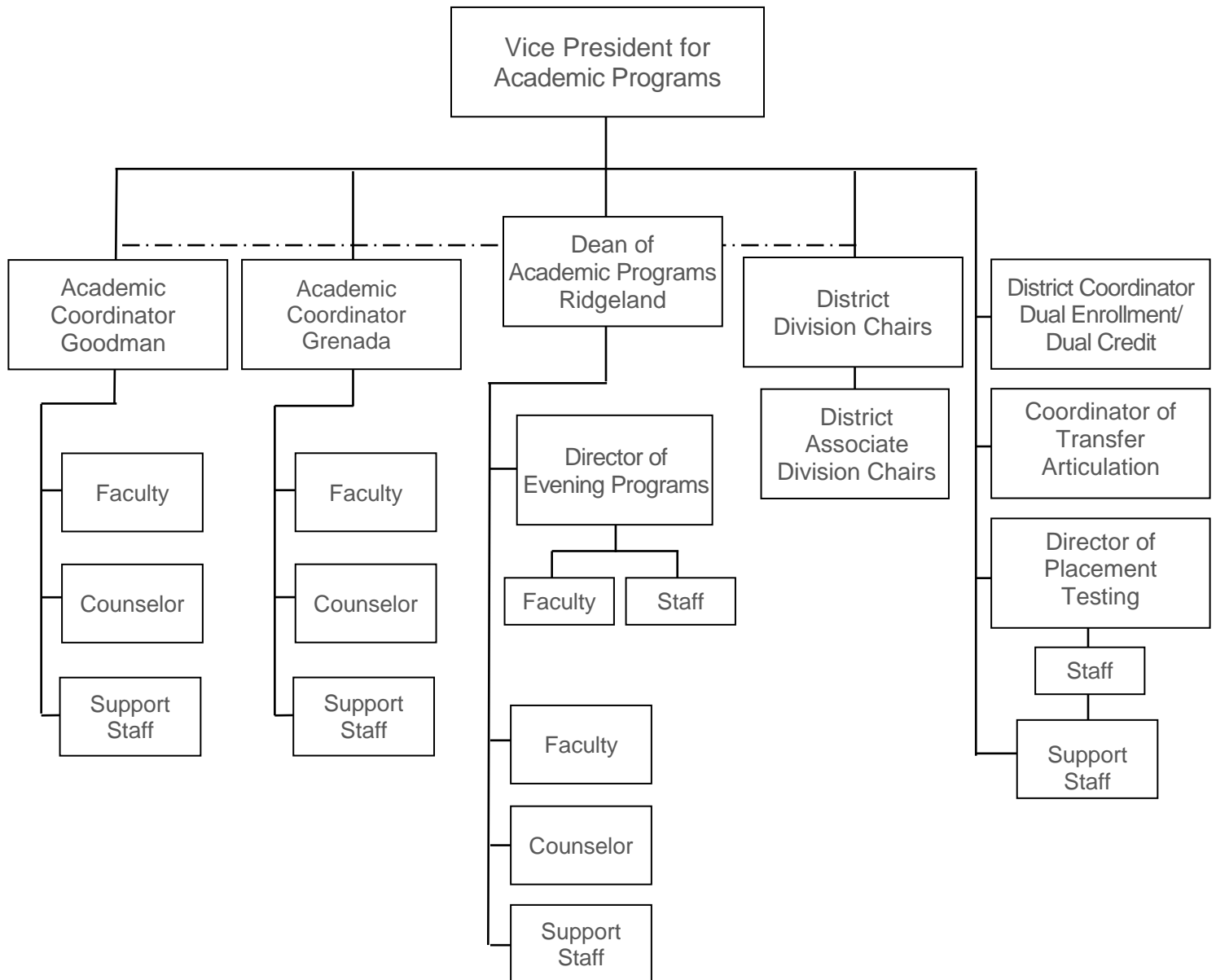


These services will be coordinated through each office of the provided service.

Faculty will report to the Program Dean/Director and Vice Presidents.

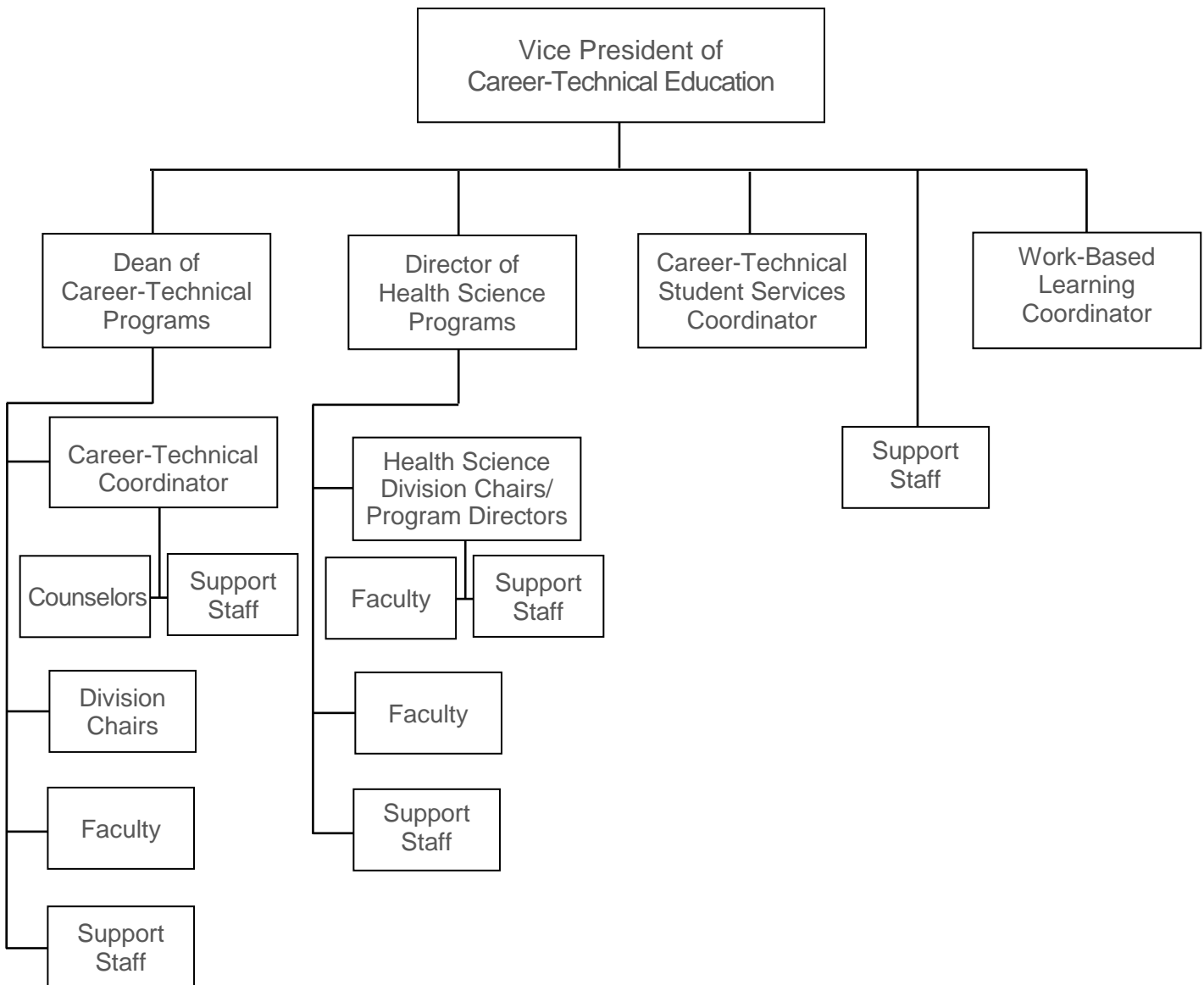
Academic Programs

Revised 7/1/19



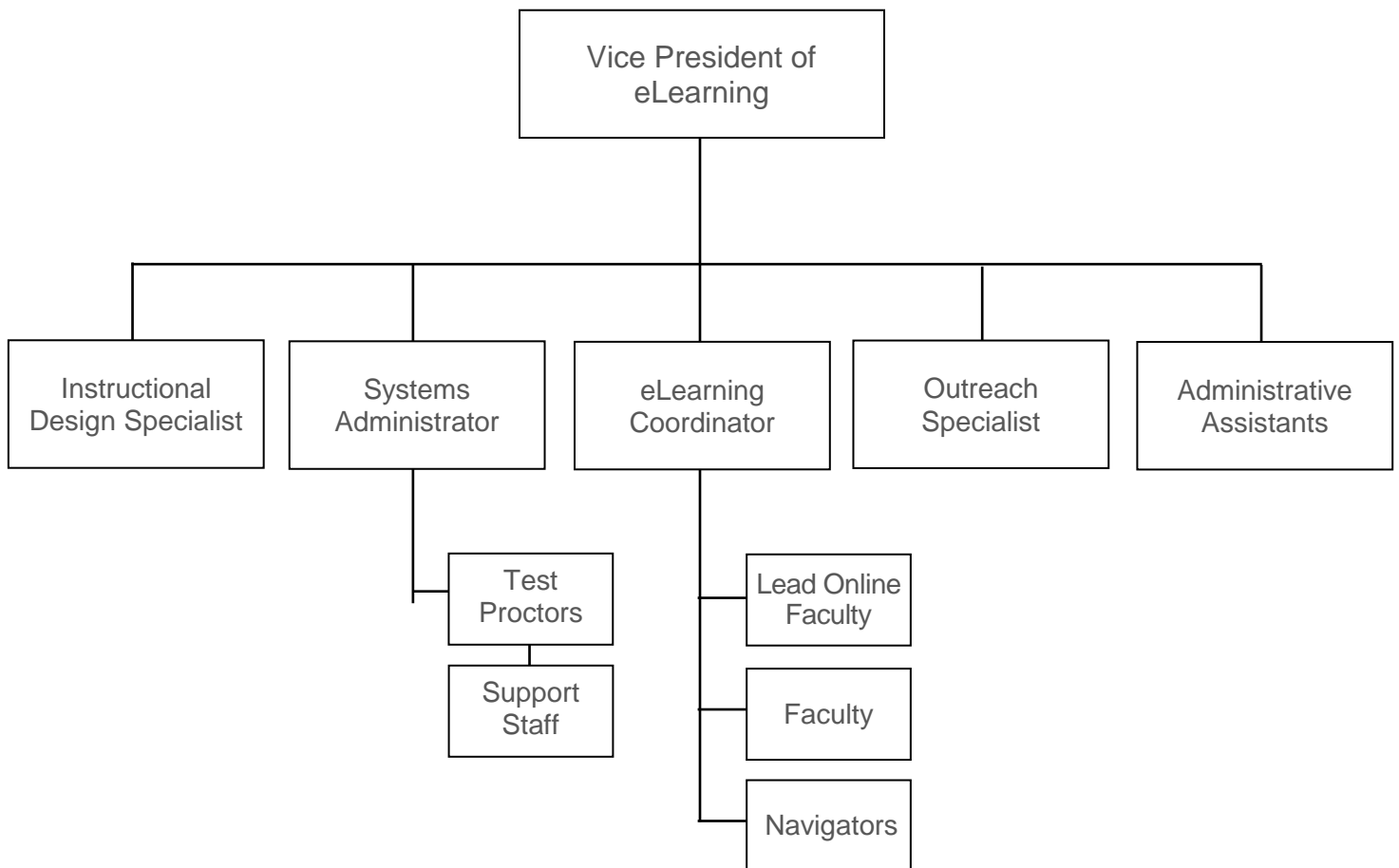
Career-Technical Programs

Revised 1/5/21



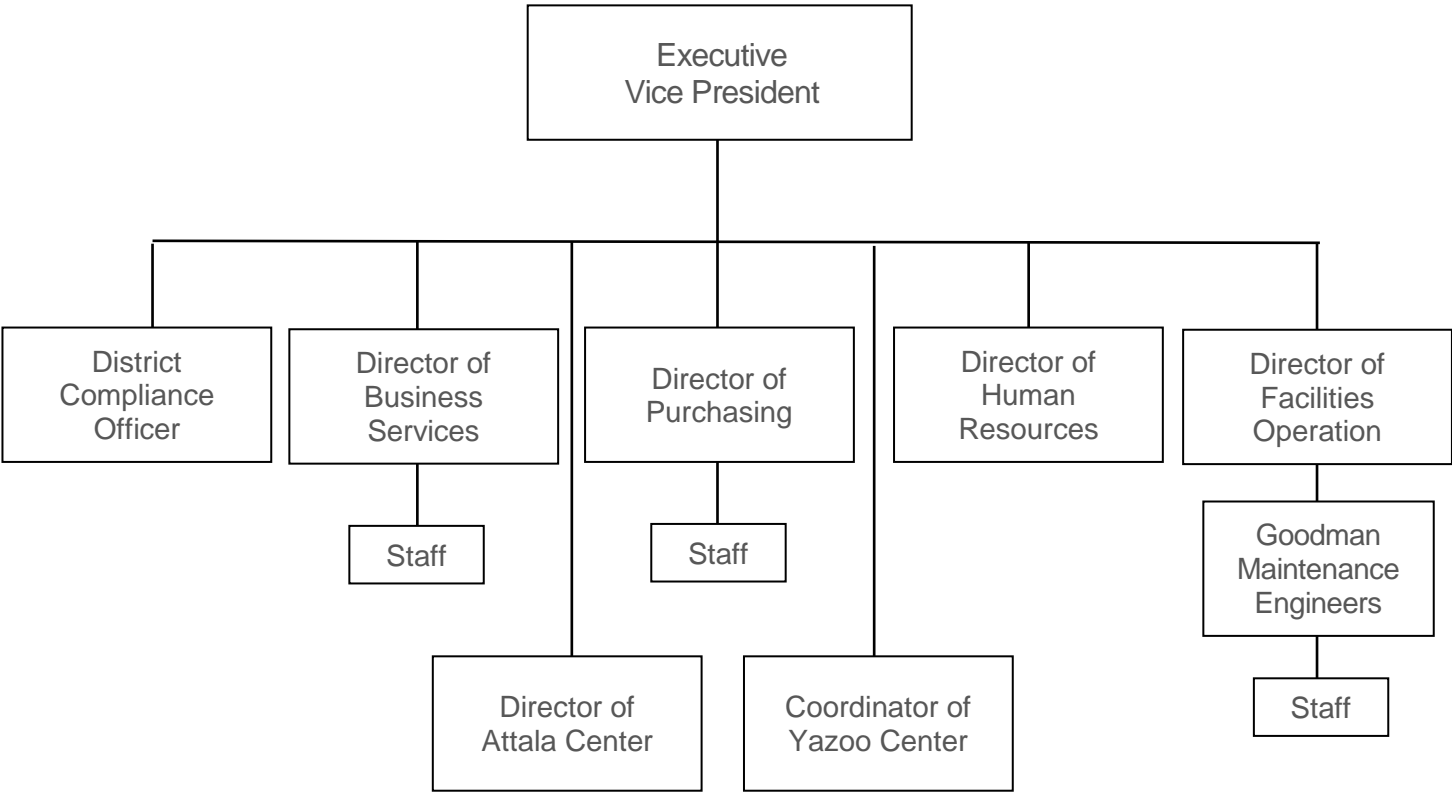
eLearning

Revised 7/16/20



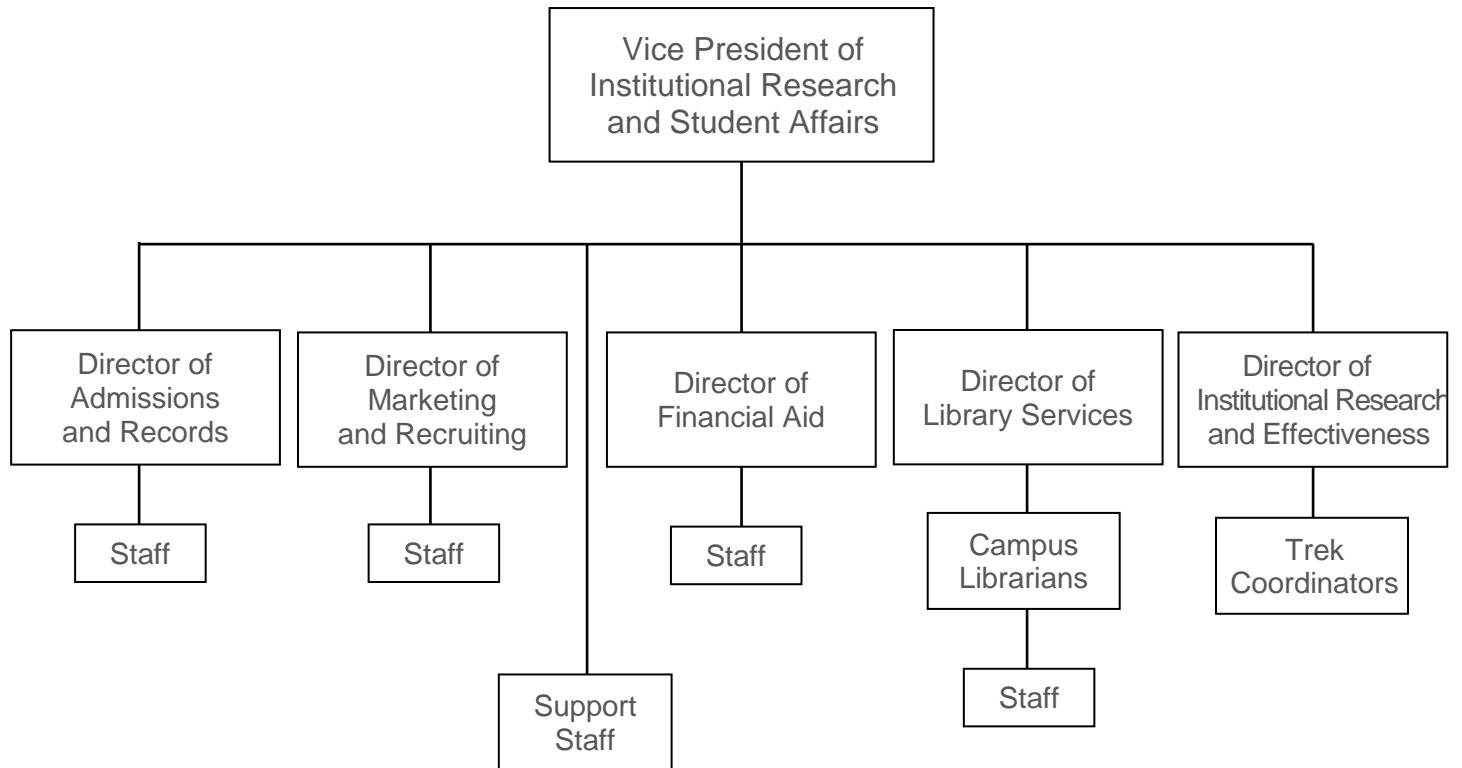
Financial Services

Revised 7/1/19



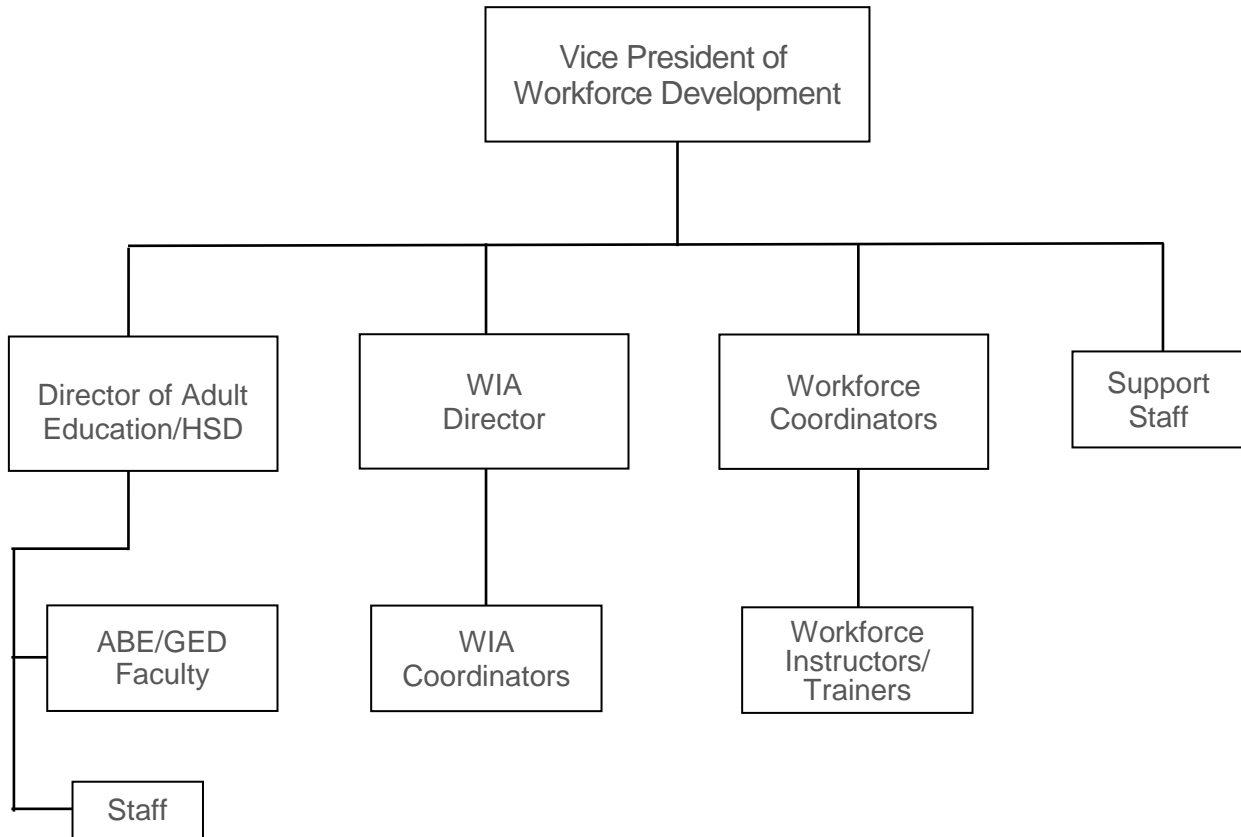
Institutional Research and Student Affairs

Revised 5/8/14



Workforce Development

Revised 6/30/18



EVALUATION AND CONTACT INFORMATION

Comments and suggestions of this Factbook are welcomed to assist the Office of Institutional Effectiveness and Research in improving future issues of the Holmes Community College Factbook.

Please mail or email comments and suggestions to the provided contact information as follows:

- ❖ Your name and division, department and/or affiliation with Holmes Community College;
- ❖ List/describe any information that may be added to next year's Factbook;
- ❖ Comment on any information contained in this Factbook that may need clarification or deletion (with page reference(s) included); and/or
- ❖ Additional comments or suggestions.

Dr. Stephanie C. Diffey
Director of Institutional Research and Effectiveness
Title IX Coordinator/Compliance Officer
Holmes Community College
P.O. Box 369
Goodman, MS 39079

scdiffey@holmescc.edu
(662) 472-9101