



Providing Our Students with the Tools Necessary to Cross the Bridges of Life

FACTBOOK 2023

Preface

The **Holmes Community College 2023 Factbook** contains information relevant to planning, evaluation, and assessment. In addition, this publication provides current descriptive information about Holmes Community College for administrators, faculty, staff, and students. Enrollment data for the **2023 Factbook** is obtained from the six-week Mississippi State Board for Community Colleges' Audit.

The Office of Institutional Research and Effectiveness prepares the annual document with input from various divisions and departments of the college. Data is derived from administrative reports completed at specific times throughout the academic year and relies on the data reported as well as data source.

The Office of Institutional Research and Effectiveness welcomes comments and suggestions regarding this publication to enhance future editions as presented on the last page of the **Holmes Community College 2023 Factbook**.

Holmes Community College provides services at the following campuses and center locations:

Goodman Campus

1 Hill Street
P.O. Box 369
Goodman, MS 39079
(662) 472-2312

Attala Center

620 West Jefferson Street
Kosciusko, MS 39090
(662) 290-0808

Grenada Campus

1060 J K Avert Drive
Grenada, MS 38901
(662) 226-0830

Yazoo County Economic

Development and Education Center
637 East 15th Street
Yazoo City, MS 39194

Ridgeland Campus

412 West Ridgeland Avenue
Ridgeland, MS 39157
(601) 856-5400

Table of Contents

Institutional Profile	4
Vision, Mission, and Strategic Initiatives	4
Campus Locations	5
Accreditation	7
Program Pathways	8
Academic Pathways	8
Career Technical Pathways	9
Institutional Characteristics	10
Awarded Degrees and Certificates	10
Enrollment (Fall 2022)	11
Student Characteristics	12
Fall Enrollment by Residence	13
Five-Year Fall Enrollment Trend of Holmes CC	14
Five-Year Fall Enrollment Trend of MS Two-Year Public Institutions	14
Full-Time Faculty Characteristics	14
Development Foundation	14
Mississippi Demographic Data Comparison 2022	15
Library Resources and Expenditures	16
Workforce Development Training Activity Report	17
Revenue by Source (FY 2022-23)	18
Five-Year Trend of Revenue by Source	18
Expenditures by Function (FY 2022-23)	19
Five-Year Trend of Expenditures by Function	19
Organizational Charts	20
Campus Maps	32
Evaluation and Contact Information	33

Institutional Profile

Holmes Community College, from its humble beginnings as Holmes County Agricultural High School, has grown into one of the largest and best community colleges in the state of Mississippi serving thousands of students.

In 1922, after Holmes County Agricultural High School had been in operation for 11 years, the legislature made it legal for agricultural high schools to add two years of college work, and Holmes Junior College opened its doors in 1925 offering the first year of college to students in Holmes and the surrounding counties. During the 1928-29 school year, the second year of college work was added making Holmes Junior College eligible to award the Associate of Arts degree.

Financial support for Holmes Junior College has grown from the original county of Holmes to include eight other counties - Attala, Carroll, Choctaw, Grenada, Madison, Montgomery, Webster and Yazoo. The state of Mississippi also serves as a major funding source for the College.

As the main campus grew and added needed programs, Holmes underwent an extensive study, which showed the need to address the educational needs in the other counties in the Holmes district, especially the northern and southern ends. In 1985, Holmes began building facilities and offering classes at both Grenada and Ridgeland.

Holmes Junior College became Holmes Community College beginning with the 1989 school year after the Board of Trustees decided that having “community” in the name would more accurately reflect the comprehensive and multi-faceted mission of the modern two-year college. The State Board for Community and Junior Colleges (now the Mississippi Community College Board) approved the name change in December 1988.

The Attala Center in Kosciusko opened its doors in 1997 to meet the needs of the residents in Attala and surrounding counties, and the Yazoo Center, located in the Yazoo Economic Development and Education

Center, opened its facilities in 2016 to provide extended services for residents of Yazoo City.

Holmes Community College recognizes that emerging technologies are changing the methods of instructional delivery to include eLearning programs, such as interactive classrooms, remote instruction, internet courses and other electronic-based teaching/learning activities. Holmes’ primary means of delivering eLearning classes are by the Mississippi Virtual Community College in both provided and hosted courses as well as through video conferencing via the Community College Network.

The college offers programs district-wide that allow students to earn associate degrees, certificates, and/or transferability to four-year institutions. At the same time, Holmes provides adult basic education, workforce training, and high school equivalency preparation and assessment.

Vision, Mission, and Strategic Initiatives

Vision

Holmes Community College will be a leader in education by serving as a comprehensive, community-oriented institution delivering flexible, responsive programs of the highest quality.

Mission

Holmes Community College, a comprehensive public institution located in Central Mississippi, provides innovative educational and cultural opportunities to its constituents through campus-based and distance education programs. The college seeks to prepare its students for university transfer, productive employment, and lifelong learning by offering an Associate of Arts degree, Associate of Applied Science degree, technical certificates, and career certificates as well as workforce training. Holmes, whose primary commitment is to excellence in all areas, offers affordable, equal access to higher education in an attractive, secure, multi-campus environment.

- Revised by the Board of Trustees February 2017

Strategic Initiatives

- I. Maintain an environment for continuous accessibility and improvement of the quality of education.
- II. Continue to acquire and support appropriate emerging technologies for curricular, instructional and administrative processes.
- III. Improve college personnel/student interactions to achieve a higher rate of student success.
- IV. Expand and improve the college's infrastructure in support of student services, instructional programs, administrative processes and community services.
- V. Improve the college's image by enhancing public relations through communication.
- VI. Expand and improve educational partnerships with business/industry and appropriate agencies.

College Information

Location

Holmes Community College operates three campuses and two centers, each found in a nine-county district in Central Mississippi. The main campus is located in Goodman (Holmes County), three miles from I-55, in a rural farming area. The Ridgeland Campus is 45 miles south on I-55 in Ridgeland (Madison County) and is adjacent to Jackson, the state capital, and the state's largest metropolitan area. The Grenada Campus (Grenada County) is approximately 60 miles north of Goodman on I-55 in an area noted for its industrial growth and recreational areas. The Attala Center in Kosciusko (Attala County), 30 miles east from Goodman, is located at the center of the state, and the Yazoo Center, 35 miles southwest from Goodman, is located in Yazoo City (Yazoo County) which is known as the gateway to the Mississippi Delta.

Degrees and Certificates

Holmes Community College awards the following degrees and certificates: Associate of Arts (AA), Associate of Applied Science (AAS), Advanced

Technical Certificate, Technical Certificate, and Career Certificate.

Faculty

The college counts 137 full-time faculty members, including 21 who hold a Doctorate degree, five who hold a Specialist degree, 80 who hold a Master's degree, 16 who hold a Bachelor's degree, 13 who hold an Associate degree, and two who hold a Certificate. The 219 part-time faculty members possess all the qualifications expected in a full-time faculty member.

Campus Locations

The main emphasis in the organization and administration of Holmes Community College is that it is a single, institutional entity with three campus locations and additional outreach facilitates. The same general policies, philosophies of operation, purposes and objectives, as well as the same procedural methods, apply to all locations equally, and exceptions can be made only when based on purely local factors. The standards for the instructional program are the same at all locations. Close departmental coordination among campuses is an essential goal of the college that ensures uniform quality of instruction. The estimated replacement value of the college's physical assets is at least \$192,096,668.

Goodman Campus

The original campus of Holmes Community College, established in 1925, is located in the center of the state at Goodman, Mississippi, in the eastern part of Holmes County. The campus is composed of almost 200 acres with 33 principal buildings. The district administrative offices for the college are located at the Goodman Campus.

This campus offers academic courses for university transfer, technical programs, career programs, and workforce programs and training. Goodman also serves as the college's residential campus and has physical facilities for student activities including varsity sports and performing arts. In addition to academic and career-technical curricula, the Goodman Campus offers opportunities

for student participation in athletics, band, choral music, art, theatre, publications, and a broad selection of clubs and organizations.

Grenada Campus

The Grenada Campus is located on approximately 14 acres near scenic Grenada Lake and is positioned on I-55 between Memphis, Tennessee, and Jackson, Mississippi. The campus has been fully operational since 1985 and provides opportunities for academic and cultural enrichment along with vocational expansion to meet the demands of the surrounding area.

This campus offers technical programs, academic courses, and workforce training. The campus further serves as a meeting place for a variety of educational workshops, seminars, and conferences. The Corey Forum, with a seating capacity of over 500, provides a venue for the Grenada Arts Partnership and a conference site for numerous groups. Since 2008, the Grenada Campus has partnered with the University of Mississippi Division of Outreach to offer selected undergraduate and graduate degree programs onsite with plans for future growth.

Ridgeland Campus

The Ridgeland Campus opened in 1985 in Madison County, one of the fastest developing areas in the state. The campus is located approximately two miles north of the city of Jackson and a half-mile north of the Natchez Trace Parkway and I-55. The campus is situated on 80 acres of land at the intersection of West Ridgeland and Sunnybrook Road.

This campus offers instruction of academic courses for university transfer and career/technical programs that lead to employment following graduation. Ridgeland also houses the college's central office for Workforce Development programs and training, which improve the skills of existing employees, prepare students for a different career, and equip students to enter the workforce.

Attala Center

The Attala Center is a modern education facility of approximately 75,000 square feet located less than one mile from Kosciusko's historic downtown square. In addition to academic offerings, the center is home to several career and technical programs and works in conjunction with business and industry to coordinate workforce programs to meet their individual training needs.

The coordination of the college's Adult Basic Education and high school equivalency preparation classes are also housed here. The Attala Center further serves as a meeting place for a variety of workshops, seminars, and conferences for the community.

Yazoo County Economic Development and Education Center

—This modernized educational facility is comprised of classroom and computer lab space located in the Yazoo Economic Development and Education Center in Yazoo City. The Yazoo Center provides academic courses, coordinates workforce program training, offers proctoring for eLearning, and functions as a meeting place for workshops and seminars for the college and local county agencies.



Attala Center, Kosciusko



Yazoo Center, Yazoo City

Accreditation

Holmes Community College is accredited by the Southern Association of Colleges and Schools Commission on Colleges to award associate degrees and certificates. Contact the Southern Association of Colleges and Schools Commission on Colleges at 1866 Southern Lane, Decatur, Georgia, 30033-4097 or call (404) 679-4500 for questions about the accreditation of Holmes Community College.

Additionally, Holmes Community College has specific programs (see table below) that are accredited and/or approved through state, regional, and national organizations as well as accrediting agencies.

Program	Accrediting Agency	Most Recent Review	Next Scheduled Review
College Accreditation	The Southern Association of Colleges and Schools Commission on Colleges	Reaffirmation 2016 Fifth-Year 2021	Reaffirmation 2026 Fifth-Year 2031
Associate Degree Nursing (ADN)	Accreditation Commission for Education in Nursing, Inc. and by the Board of Trustees of Institutions of Higher Learning	Spring 2019	Spring 2027
Cosmetology	Mississippi State Board of Cosmetology	Spring 2022	Fall 2026
Emergency Medical Services (EMS) Paramedic	Committee on Accreditation for Emergency Medical Services Professions	Fall 2018	Fall 2025
Massage Therapy	Mississippi State Board of Massage Therapy	Spring 2022	Spring 2024
Occupational Therapy Assistant (OTA)	Accreditation Council for Occupational Therapy Education	Fall 2014	Fall 2024
Physical Therapy Assistant (PTA)	Commission on Accreditation in Physical Therapy Education (CAPTE)	Spring 2022	Spring 2032
Practical Nursing	Mississippi Board of Nursing	Fall 2017	Fall 2025
Surgical Technology	Commission on Accreditation of Allied Health Education Programs (CAAHEP) upon the recommendation of the Accreditation Review Council on Education in Surgical Technology and Surgical Assisting (ARC-STSA)	Spring 2015	Spring 2025

Program Pathways

Arts/Humanities/Language Pathway

Art/Music Pathway

Architecture
Art
Entertainment Industry Studies
Music

Humanities Pathway

History
Philosophy or Religious Studies

Language Pathway

Communications/Journalism/Mass
Communications
English
Liberal Arts
Spanish

Business Pathway

Accounting
Agribusiness
Aviation Management
Business Administration
Economics
Finance
Management
Marketing

Education Pathway

Child Development/Child Care &
Family Education
Elementary/Special Education

Secondary Education Pathway

Biology/Science
Chemistry/Physical Science
English
Mathematics
Music – Instrument
Music – Piano
Music – Voice
Physical Education/Kinesiology
Physics
Social Studies

General College Pathway

General College Studies

Health Sciences Pathway

Biological Science
Pre-Allied Health

Academic Pathways

Dentistry Pathway

Pre-Dental
Pre-Dental Hygiene

Health-Related Pathway

Health Informatics & Information
Management
Health Sciences
Pre-Medical Laboratory Science
Pre-Occupational Therapy
Pre-Physician Associate/Assistant Studies
Pre-Physical Therapy
Pre-Radiologic Sciences
Pre-Speech Pathology/Communicative Sciences

Medicine Pathway

Pre-Medical
Pre-Nursing

Pharmacy Pathway

Pre-Pharmacy

Veterinary Pathway

Pre-Veterinary
Pre-Veterinary Medical Technology

Kinesiology Pathway

Exercise Science/Kinesiology
Pre-Athletic Training
Sport Management/Administration

Public Safety Pathway

Criminal Justice
Forensic Science
Pre-Law/Legal Studies

Social & Behavioral Science Pathway

Psychology
Social Work/Sociology

Engineering Pathway

Chemical/Biological/Petroleum
Civil/Mechanical/Aerospace
Electrical/Computer/Software

Science, Technology, & Mathematics Pathway

Agricultural Sciences
Agronomy
Chemistry
Computer Science
Forestry
Mathematics
Wildlife, Fisheries, & Aquaculture

Career Technical Pathways

Health Science Programs Pathway

- Associate Degree Nursing Program
- Emergency Medical Sciences/Basic Program
- Emergency Medical Sciences/Critical Care Program
- Emergency Medical Sciences/Advanced EMT and Paramedic Program
- Massage Therapy Program
- Occupational Therapy Assistant Technology Program
- Physical Therapist Assistant Program
- Practical Nursing Program
- Surgical Technology Program

Industrial Studies Pathway

- Automotive Technology
- Collision Repair Technology
- Engineering Technology
 - Architectural Engineering Technology
 - Construction Technology
 - Drafting & Design Technology
 - Industrial Engineering Management Technology
 - Industrial Technology
 - Interior Design Technology
- Heating/Vent/AC/Refrigeration Technology
- Industrial Mechanics and Maintenance Technology
 - Electro-Mechanical Technology
 - Industrial Maintenance Technology
- Precision Machining Technology
- Welding & Cutting Technology

Professional Studies Pathway

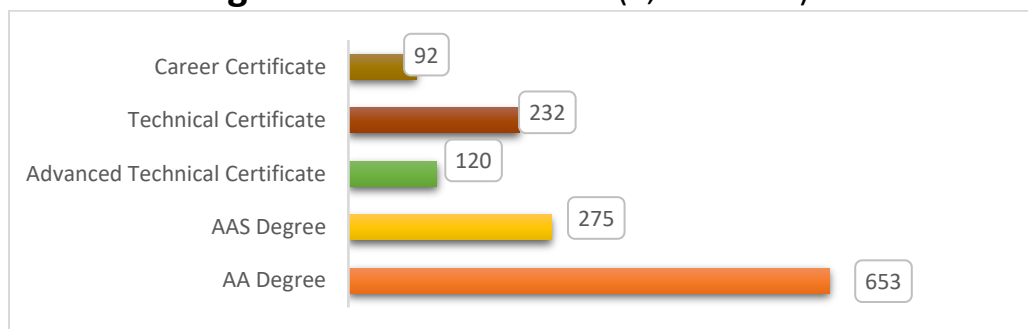
- Business Technology
 - Accounting Technology
 - Administrative Office Technology
 - Billing & Coding Technology
 - Business Management Technology
 - Medical Office Technology
- Conservation Law Enforcement Technology
- Cosmetology
- Criminal Justice Administration Technology
- Culinary Arts Technology
- Forest Technology
- Information Systems Technology:
 - Computer Engineering Technology
 - Computer Networking Technology
 - Software Engineering Technology
- Paralegal Technology
 - Legal Assistant Technology
 - Legal Management Technology





Institutional Characteristics

Awarded Degrees and Certificates (1,372 Total)



Top Pathways of Degrees Awarded for 2022-2023

AA Pathway Programs	Count
Pre-Nursing (BS)	112
General College Studies	65
Business Administration	53
Elementary/Special Education	30
Psychology	39
Accounting	15
Pre-Allied Health	16
Criminal Justice	26
Social Work/Sociology	22
Exercise Science/Kinesiology	17
Pre-Physical Therapy	10

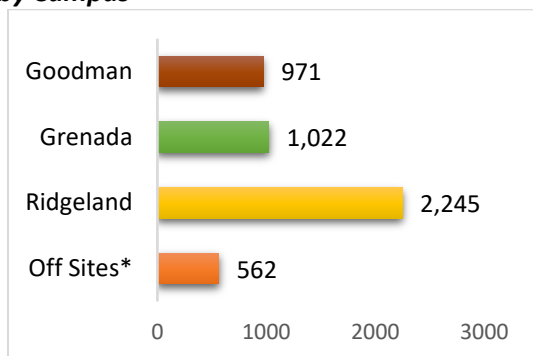
AAS Pathway Programs	Count
Associate Degree Nursing (ADN)	112
Paralegal Technology	12
Medical Office Technology	12
Paramedic	9
Occupational Therapy Assistant Technology	9
Billing and Coding Technology	20
EMS – Paramedic	9
Physical Therapist Assistant	9
Business Management Technology	9
Computer Engineering Technology	8
Surgical Technology	11



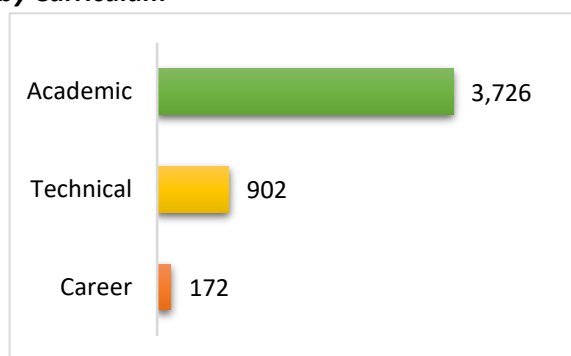
Enrollment (Fall 2022) Audited Data

Student Enrollment (4,800 Students Total)

by Campus



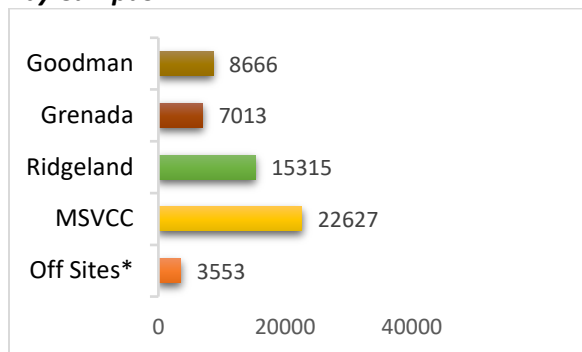
by Curriculum



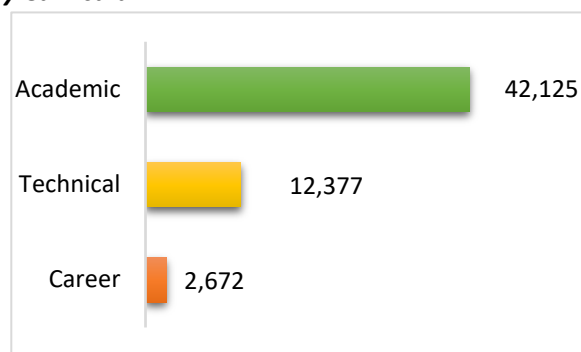
*(Attala Center, Yazoo Center, F2F DEDC)

Credit Hours Enrollment (57,174 Hours Total)

by Campus



by Curriculum



*(Attala Center, Yazoo Center, F2F DEDC)

Top Pathways Enrollment (Fall 2022)

Pathway Program	Pathway Count
Pre-Nursing (BS)	591
General College Studies	451
Associate Degree Nursing	287
Business Administration	251
Pre-Allied Health	142
Elementary/Special/Secondary Education	135
Psychology	129
Practical Nursing	103
Pre-Physical Therapy	98
Social Work/Sociology	97
Pre-Medical	97
Criminal Justice	95

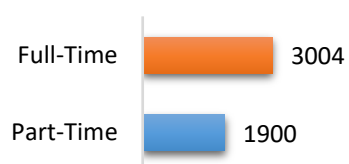


Student Characteristics (4,800 Students Total)

Classification Level*

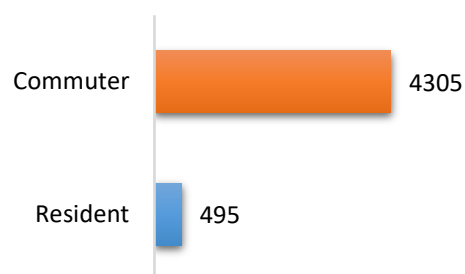


Enrollment Status

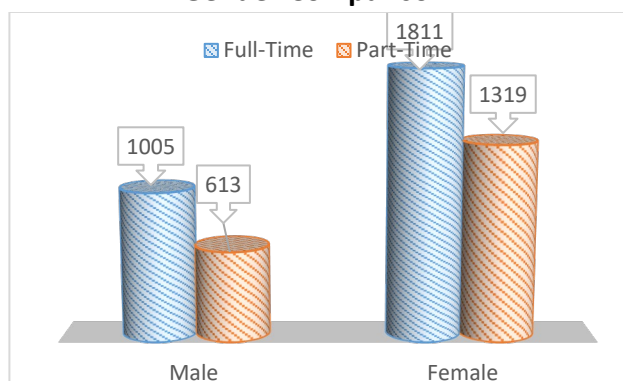


*Sophomore (30 and above semester hours)
Freshman (0-29 semester hours)

Residency Status

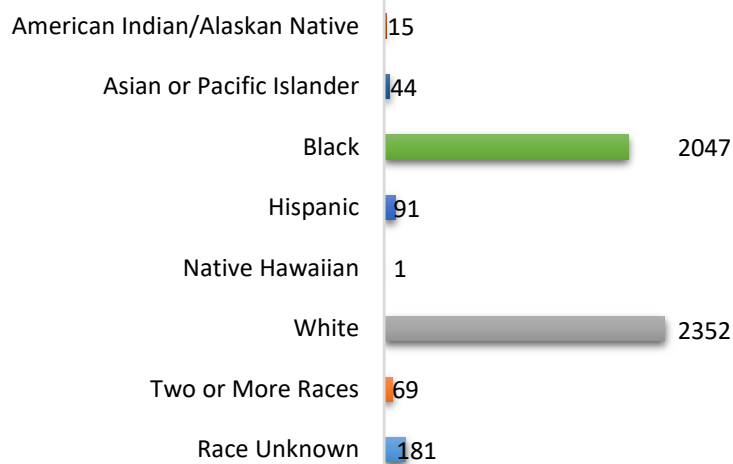
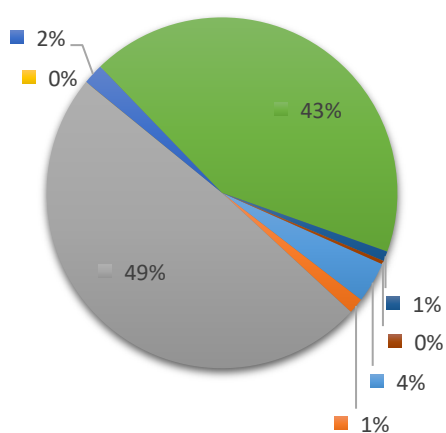


Gender Comparison*



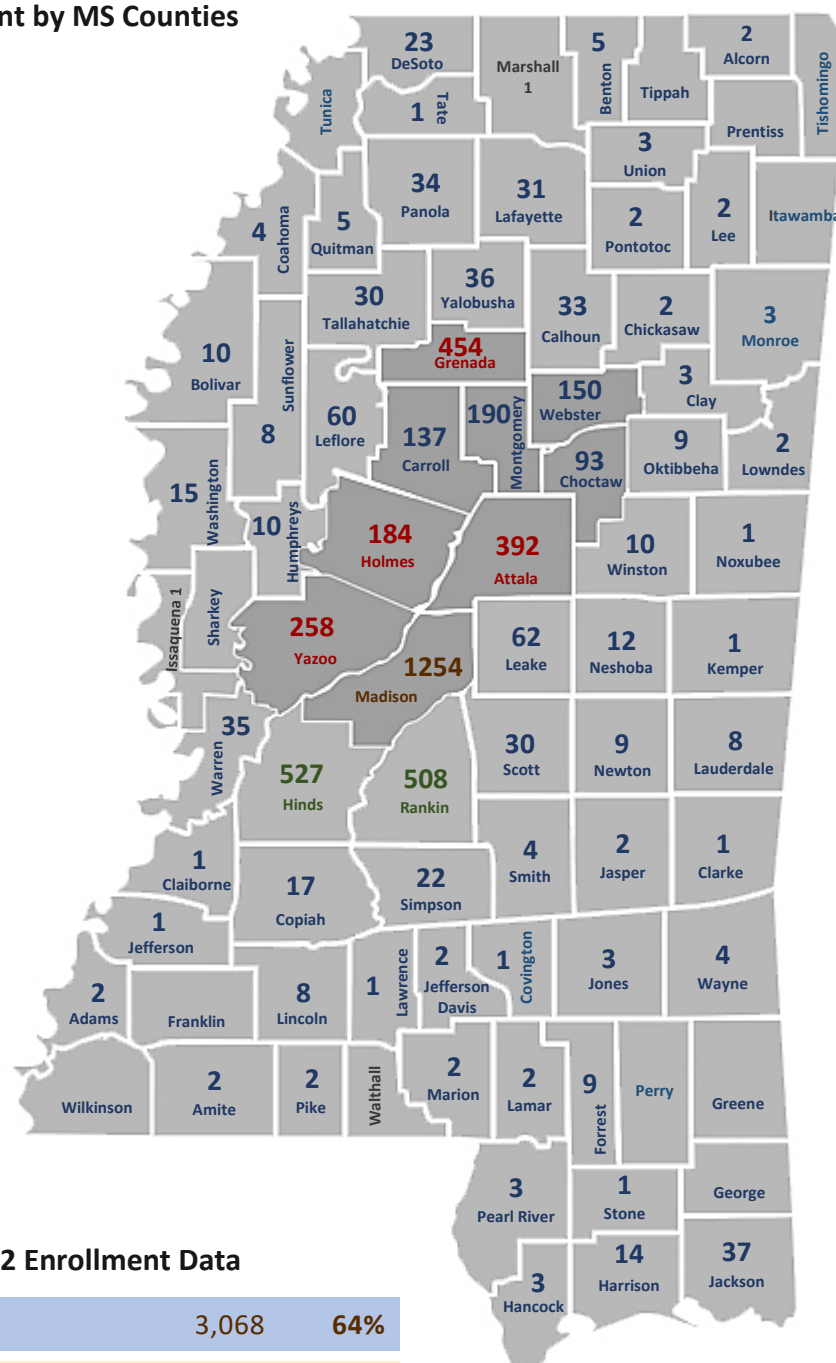
*Note: 13 FT & 39 PT did not report gender status

Ethnicity



Fall Enrollment by Residence

Fall 2022 Enrollment by MS Counties



Additional Fall 2022 Enrollment Data

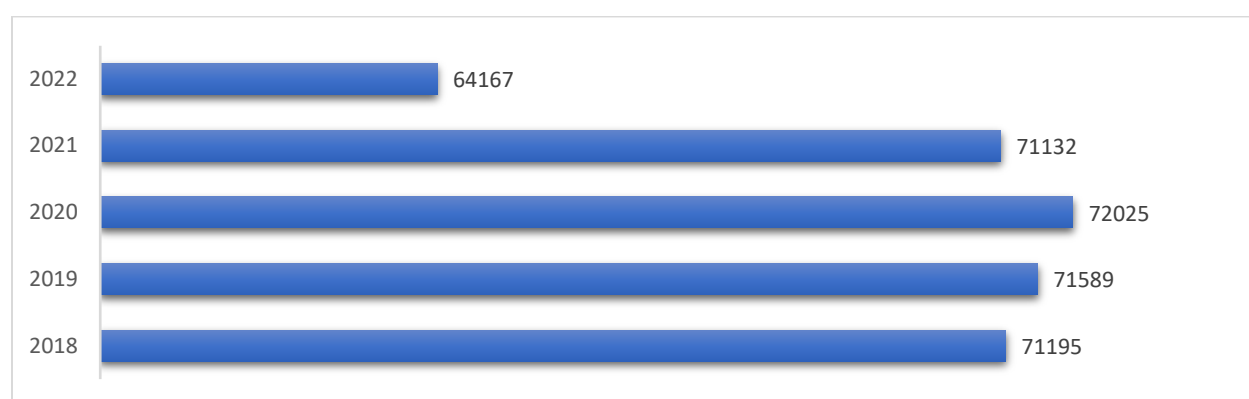
District	3,068	64%
Out of District (Hinds)	527	11%
Out of District (Rankin)	508	11%
Out of District (Other)	647	13%
Out of State	50	1%
Total Fall 2022 Enrollment	4,800	100%

Five-Year Fall Enrollment Trend of Holmes CC

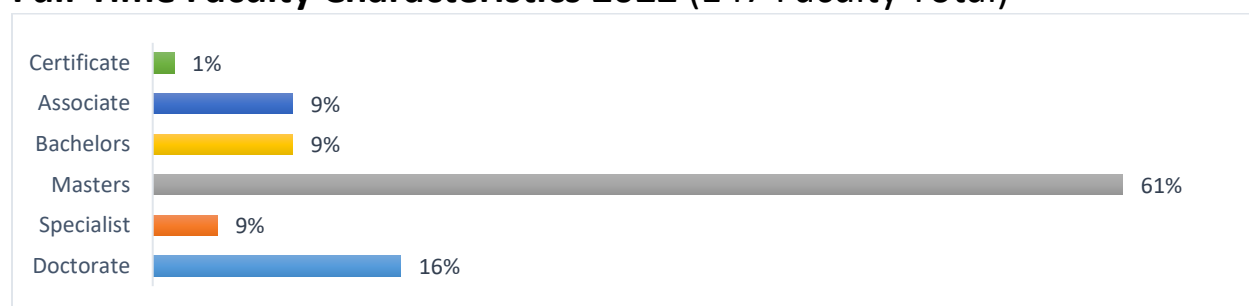


Five-Year Fall Enrollment Trend of MS Two-Year Public Institutions

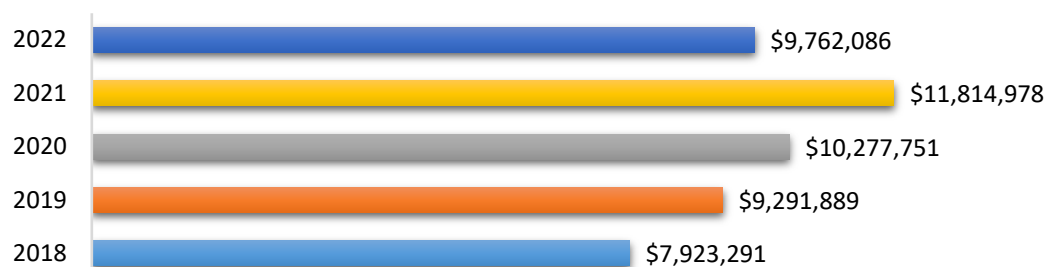
Source: The Chronicle of Higher Education Almanacs of 2018-2019 through 2022-2023



Full-Time Faculty Characteristics 2022 (147 Faculty Total)



Development Foundation



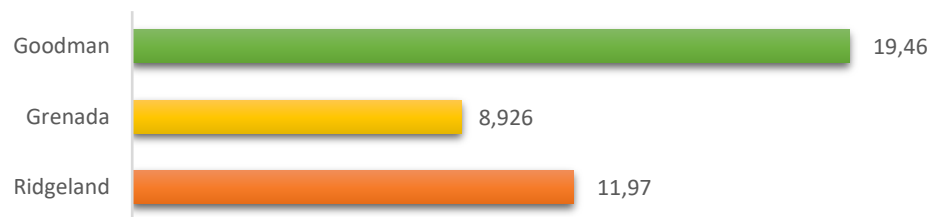
Mississippi Demographic Data Comparison 2022

Demographics		Nation	Mississippi
Populations	(State Rank: 34)	331,893,745	2,949,965
Per Capita Income	(State Rank: 51)	\$38,332	\$26,941
Poverty Rate		12.8%	19.4%
Age Distribution			
Up to 4		5.6%	5.9%
5 to 14		12.6%	13.4%
15 to 19		6.6%	7.3%
20 to 24		6.4%	6.8%
25 to 44		26.8%	25.1%
45 to 64		25.2%	24.8%
64 and older		16.8%	11.1%
Racial and Ethnic Distribution			
American Indian		1.0%	0.5%
Asian		5.8%	0.8%
Black		12.1%	36.1%
Pacific Islander		0.2%	0.0%
White		61.2%	56.1%
More than One Race		12.6%	5.1%
Hispanic (may be any race)		18.8%	3.2%
Other		7.2%	1.4%
Educational Attainment of Adults			
8th grade or less		4.8%	4.8%
Some High School, no Diploma		5.9%	8.8%
High-School Diploma		26.3%	29.8%
Some College, no Degree		19.3%	21.8%
Associate Degree		8.8%	10.2%
Bachelor's Degree		21.2%	15.4%
Master's Degree		9.8%	6.7%
Doctoral Degree		1.6%	1.2%
Professional Degree		2.3%	1.5%
New High-School Graduates			
Total for 2022-23		3,791,630	30,760
Projected Change: 2022-23 to 2032-33		- 1.3%	-10.1%
High-School Dropout Rate		3.8%	3.2%
Average ACT Score	(Holmes CC: 19.5)	19.8	17.8
Enrollment Highlights			
Public 4-Year Institutions		9,069,611	75,857
Public 2-Year		4,477,772	64,167
Private 4-year, Nonprofit		4,102,952	17,743
Private 2-Year, Nonprofit		27,574	n/a
Private 4-Year, For-Profit		836,433	442
Private 2-Year, For-Profit		177,233	362
Degrees Awarded			
Associate		1,036,416	13,371
Bachelor's		2,067,137	17,319
Master's		872,868	5,618
Doctorate		194,818	1,557
Average Pay of Full-Time Faculty of 2-Year Colleges			
Public		\$69,054	\$49,942
Private Nonprofit		\$48,548	n/a

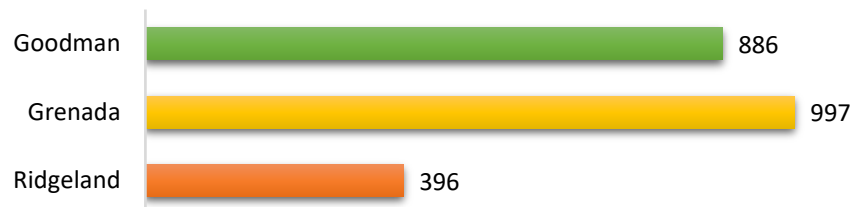
The Chronicle of Higher Education Almanac 2023-24, Vol. 69, No. 25, August 18, 2023

Library Resources and Expenditures

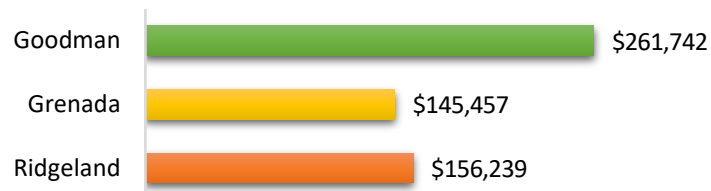
Library Collections (233,452 Shared eBooks; 273,818 Total)



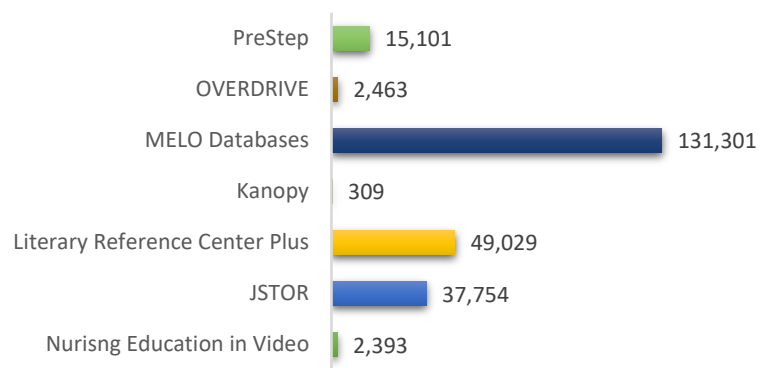
Library Circulations (2,252 Total)



Library Expenditures (\$563,438 Total)



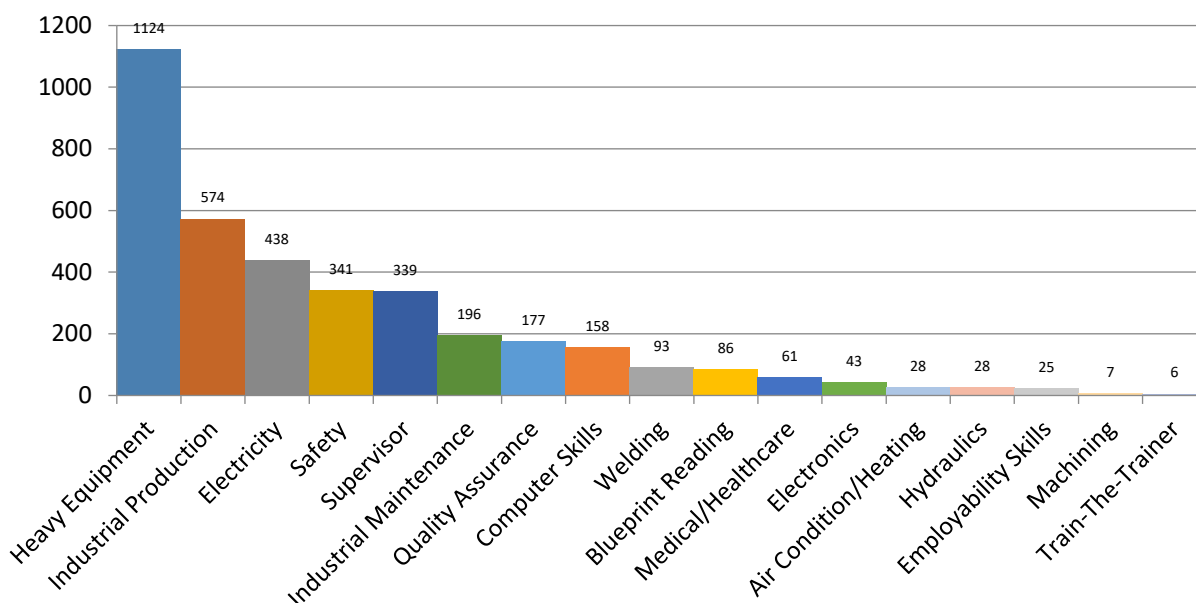
Library Database Usage (4,215,911 EBSCO Discovery; 4,236,386 Total)



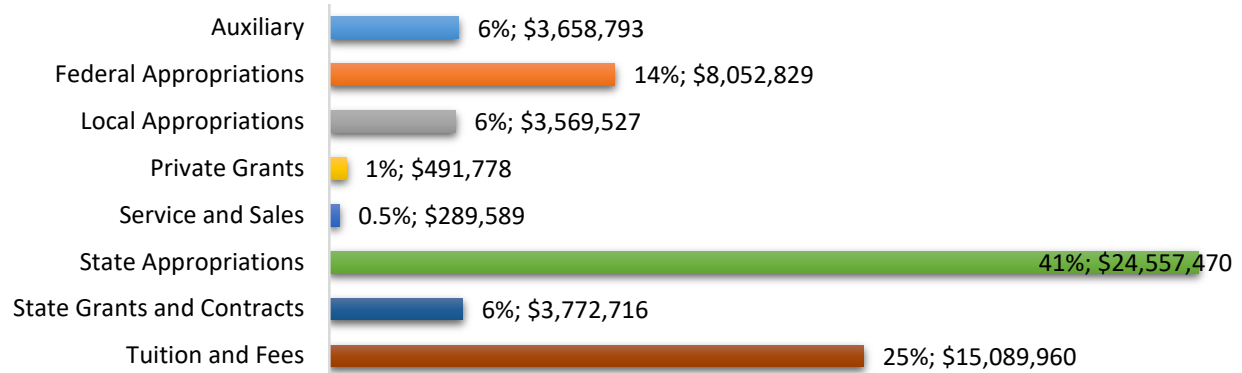
Workforce Development Training Activity Report

Course	Classes	Trainees
Heavy Equipment	186	1124
Industrial Production	54	574
Electricity	56	438
Safety	54	341
Supervisor	44	339
Industrial Maintenance	48	196
Quality Assurance	37	177
Computer Skills	22	158
Welding	12	93
Blueprint Reading	10	86
Medical/Healthcare	5	61
Electronics	10	43
Air Condition/Heating	3	28
Hydraulics	4	28
Employability Skills	2	25
Machining	2	7
Train-The-Trainer	1	6

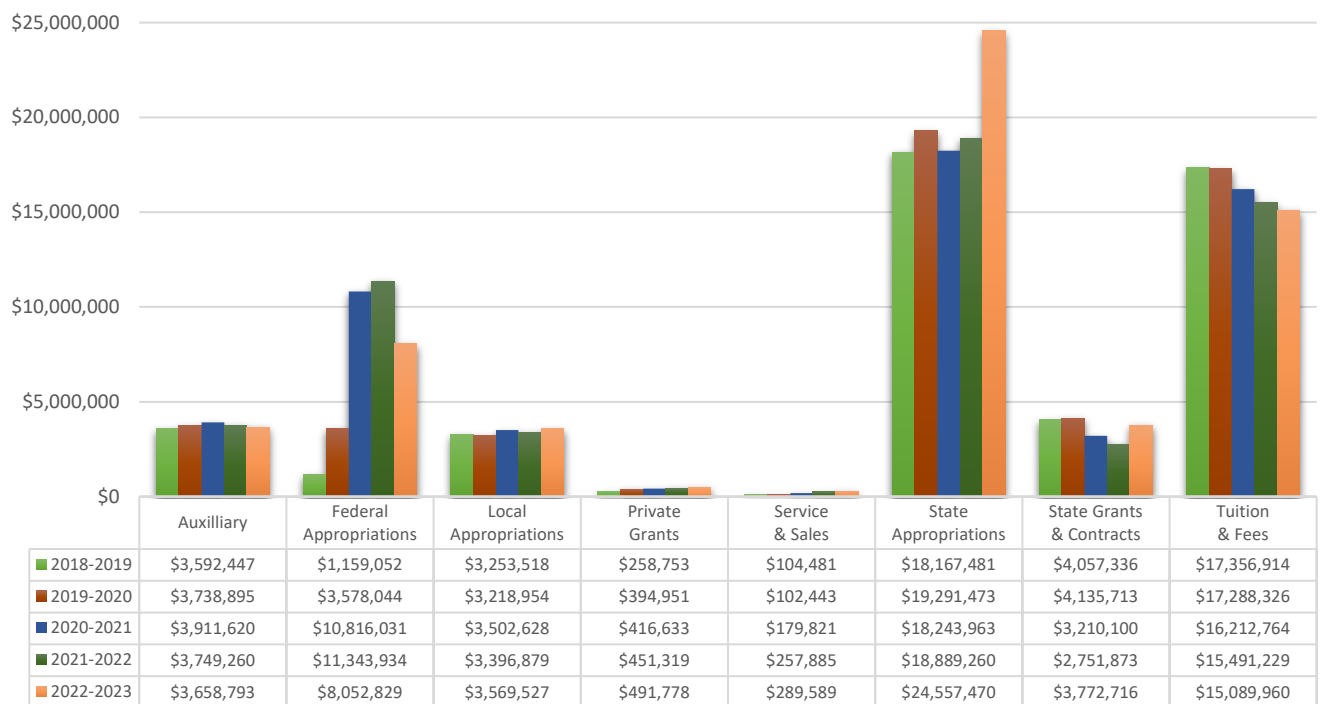
Total Number of Trainees in FY2023 3,727



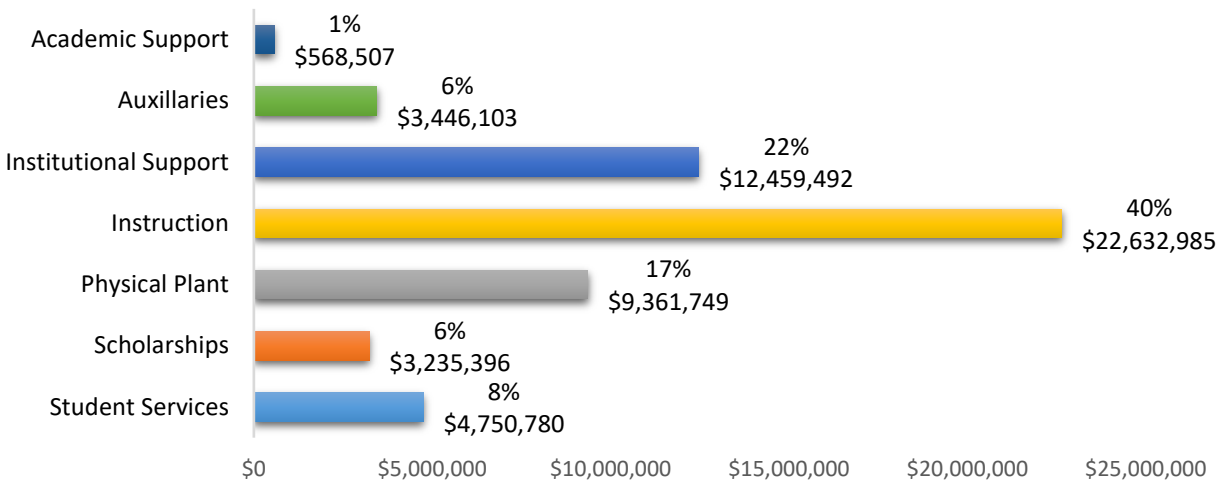
Revenue by Source (FY 2022-23) (\$59,482,662 Total)



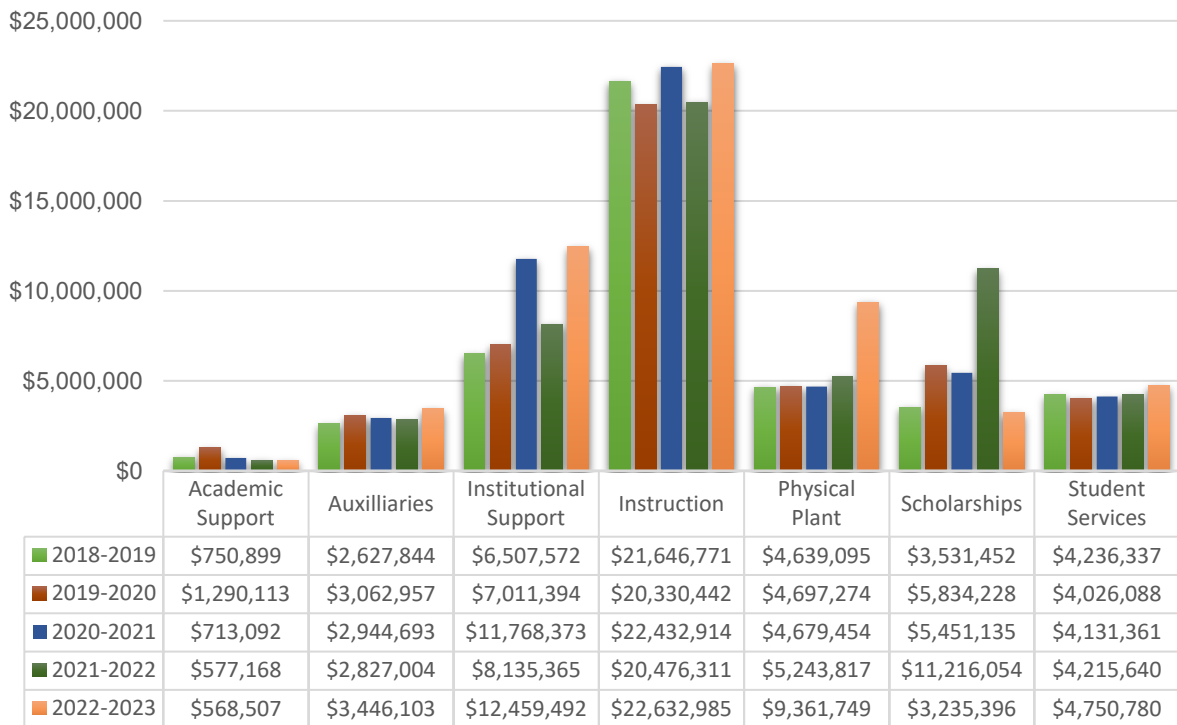
Five-Year Trend of Revenue by Source



Expenditures by Function (FY 2023-23) (\$56,455,012 Total)



Five-Year Trend of Expenditures by Function

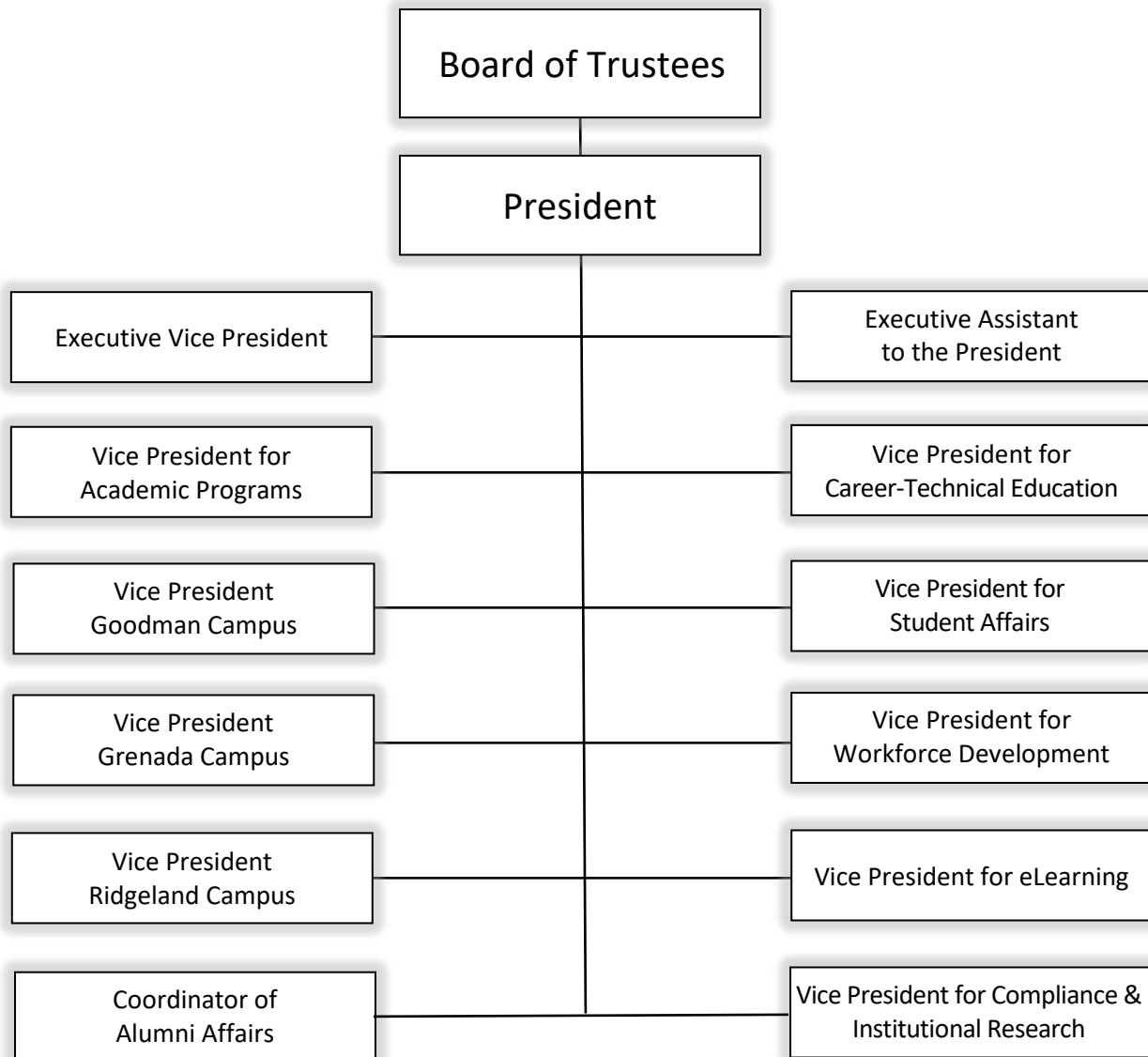




Organizational Charts

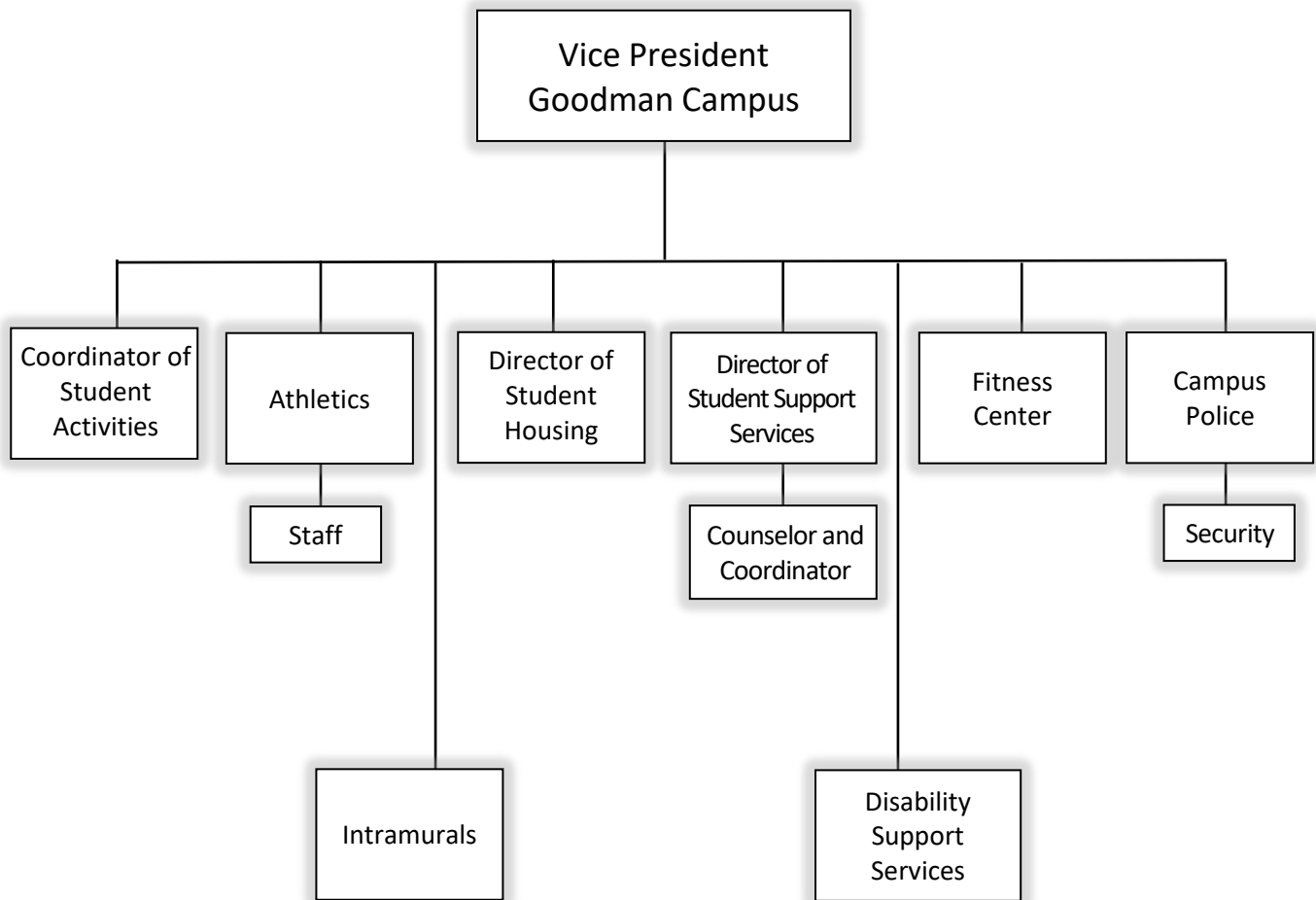
Holmes Community College District

Revised 8/15/22



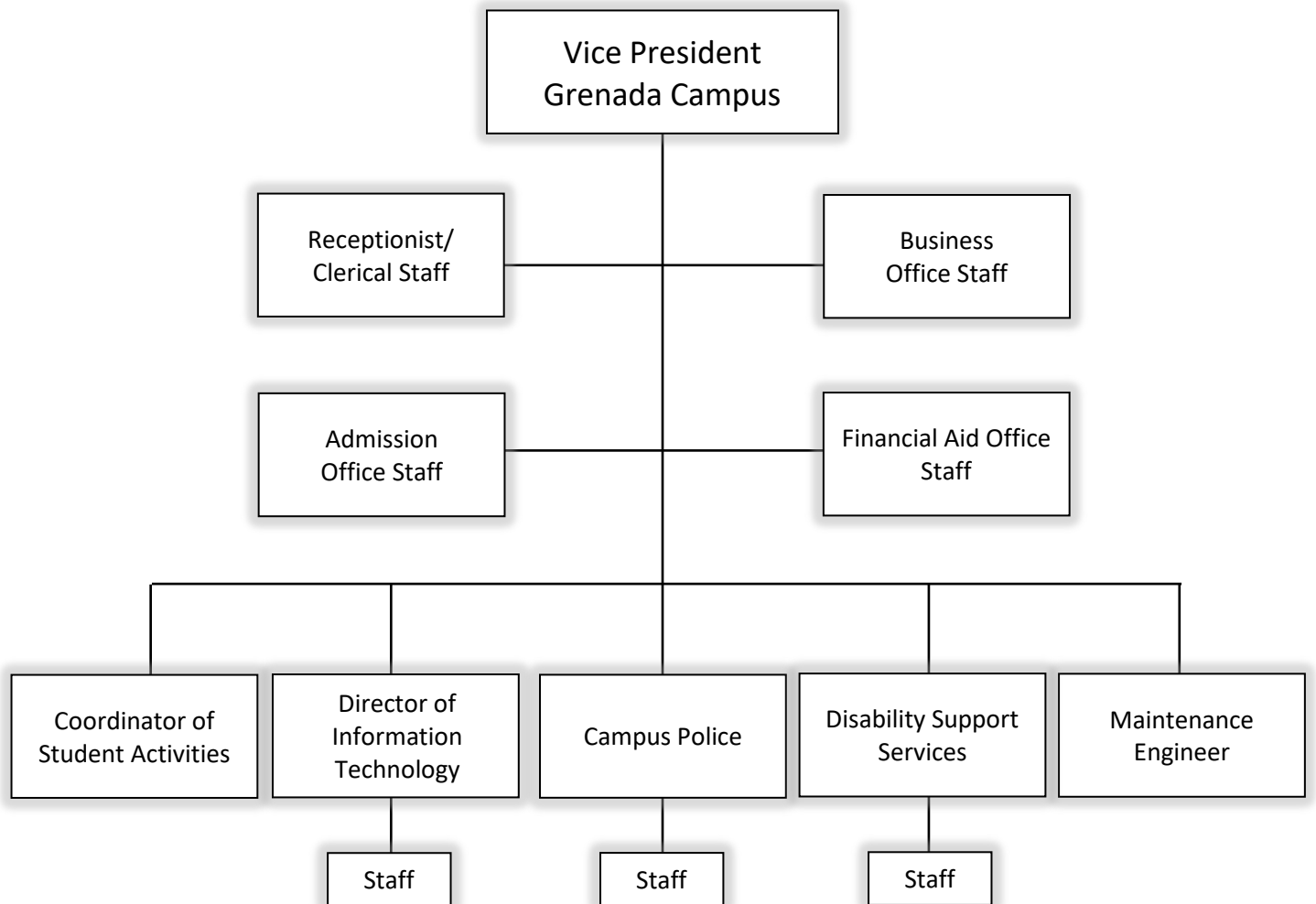
Goodman Campus

Revised 7/1/19



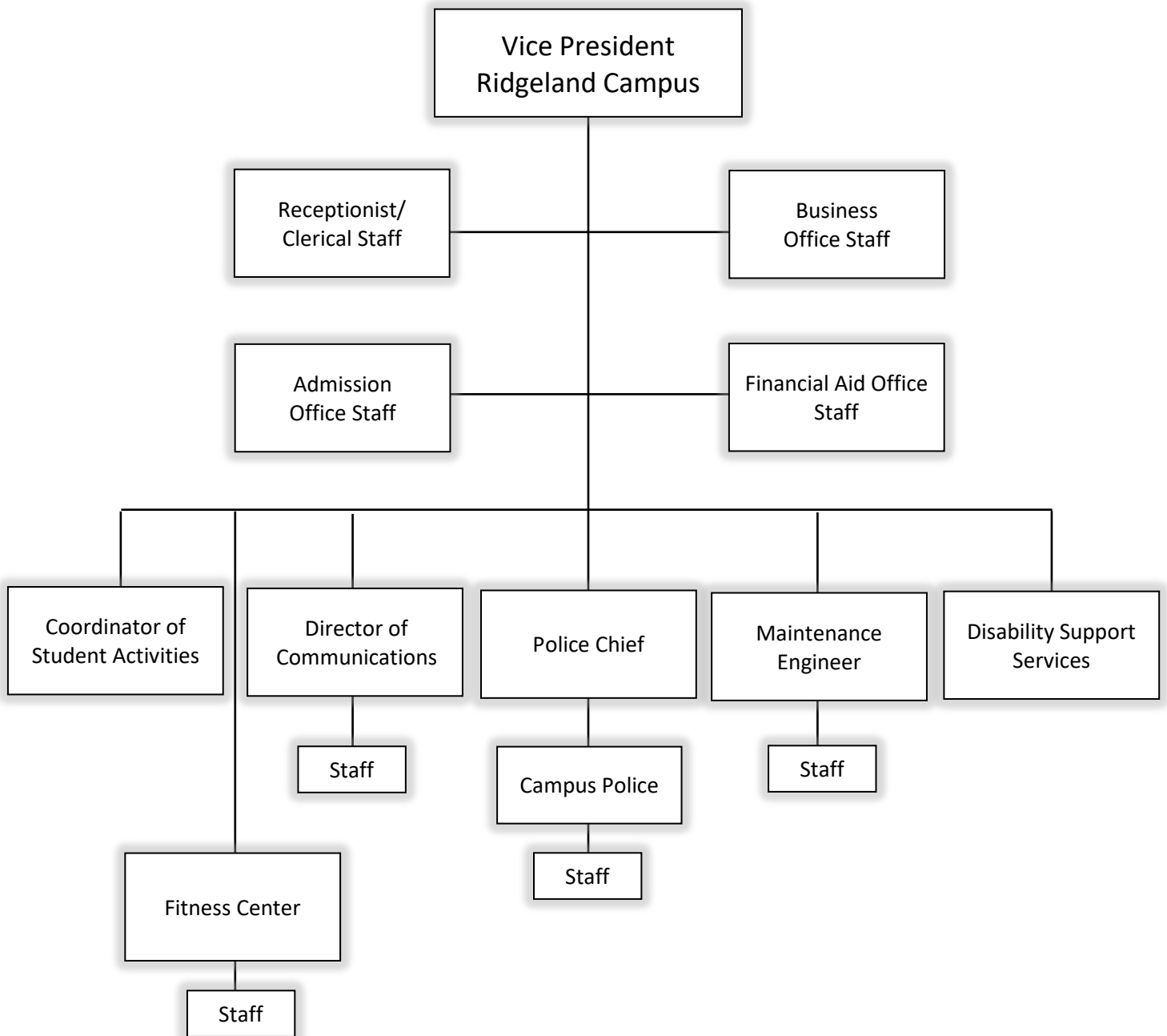
Grenada Campus

Revised 8/7/18



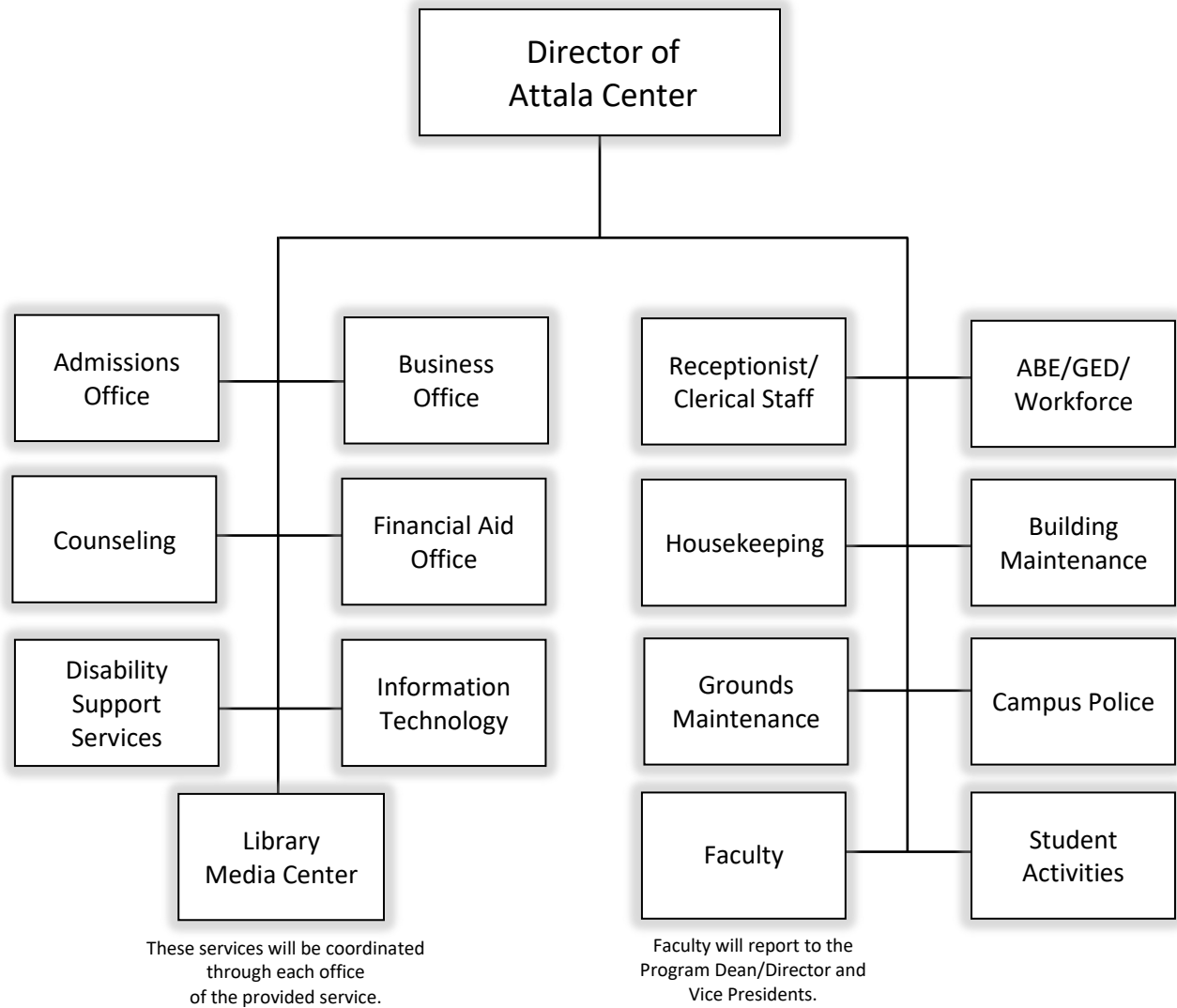
Ridgeland Campus

Revised 8/7/18



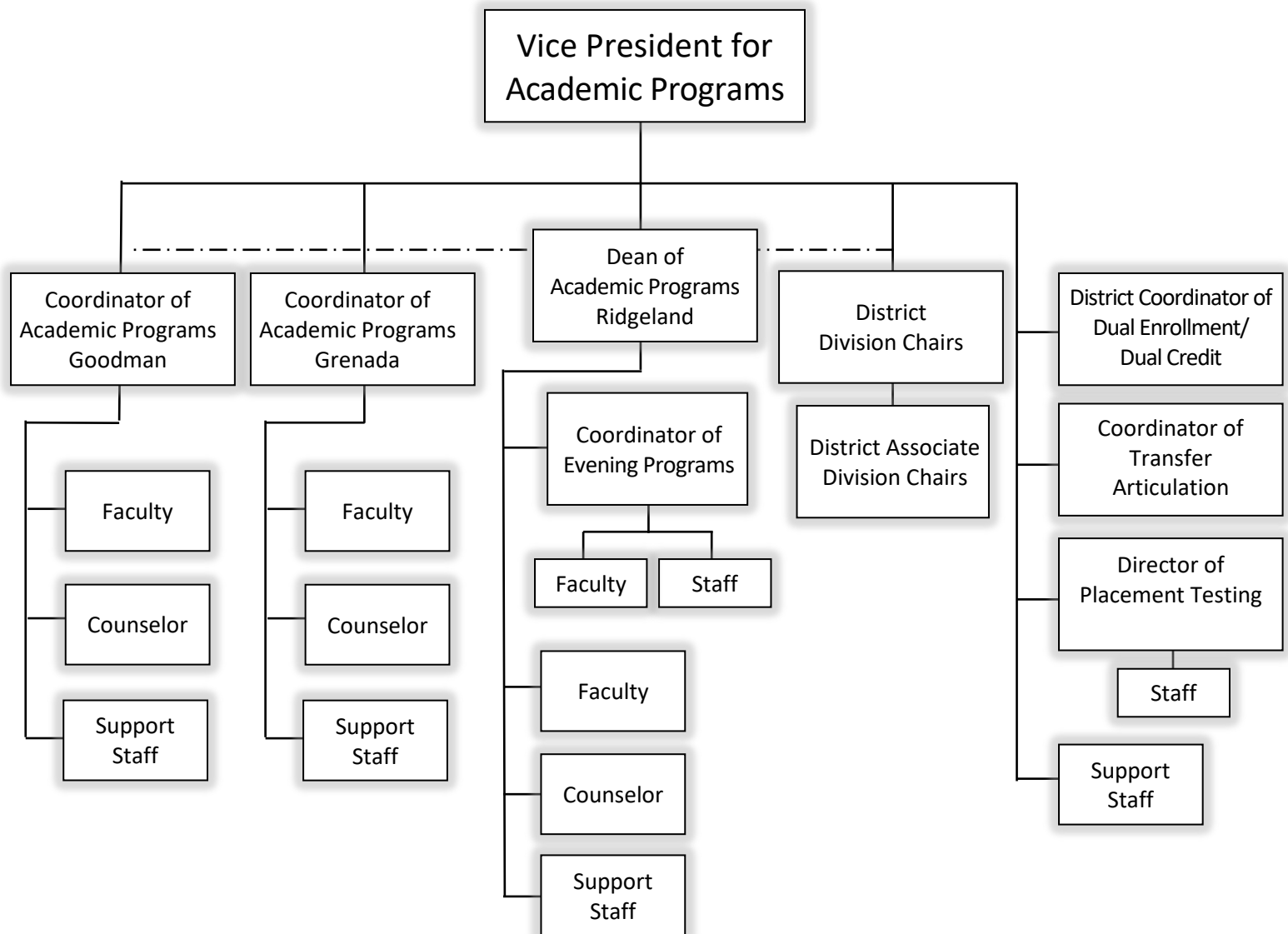
Attala Center

Revised 7/1/19



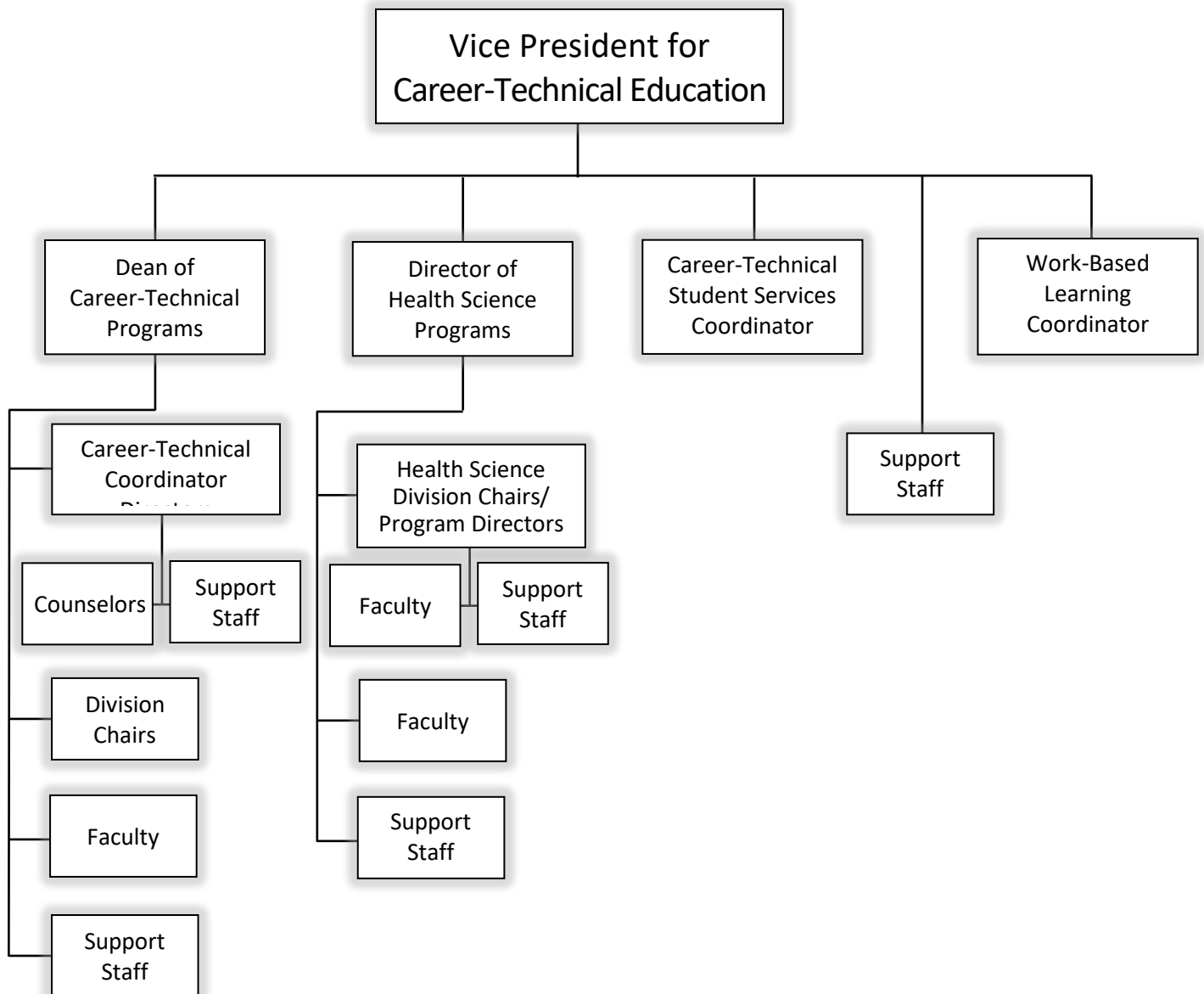
Academic Programs

Revised 8/15/22



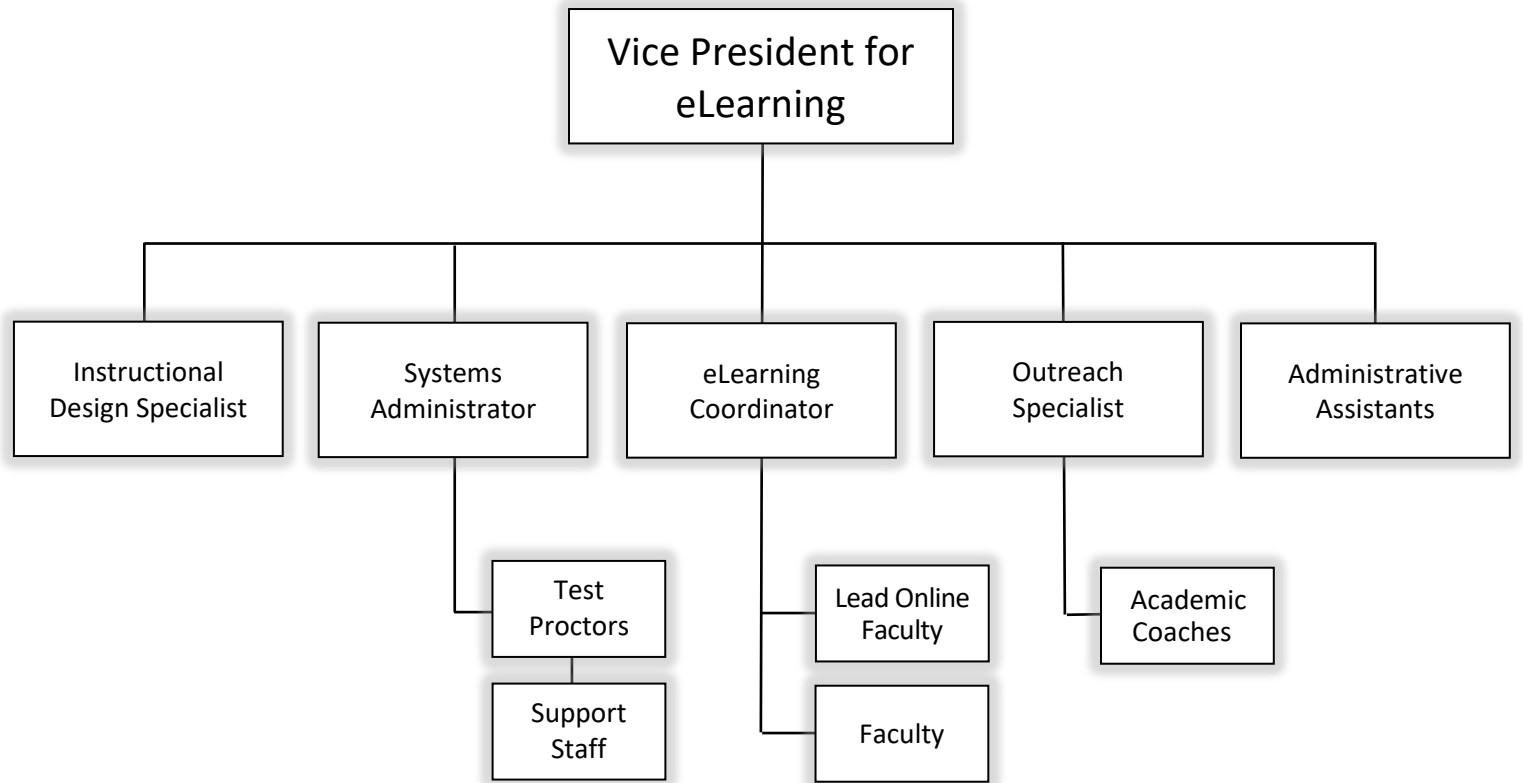
Career-Technical Programs

Revised 1/5/21



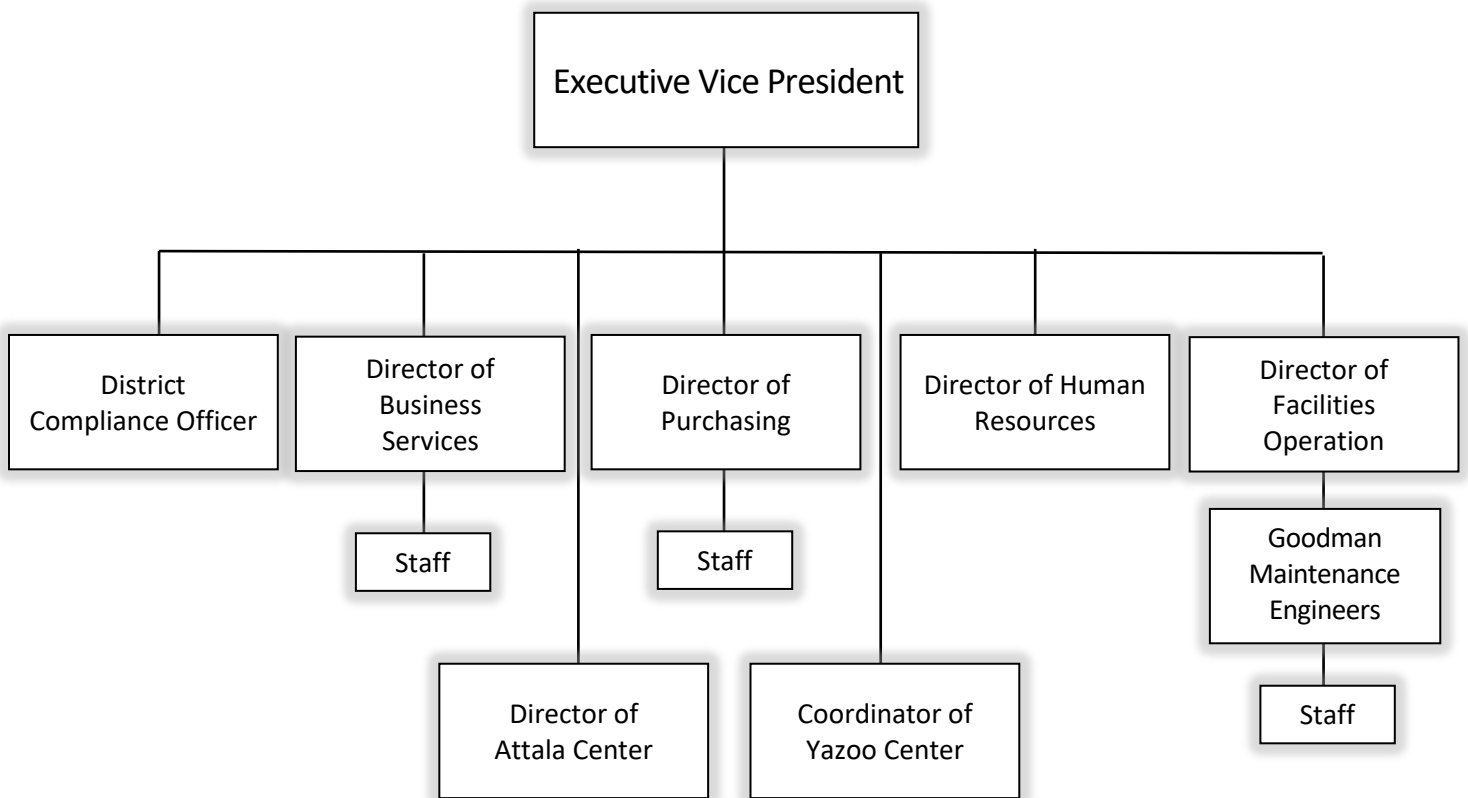
eLearning

Revised 8/15/22



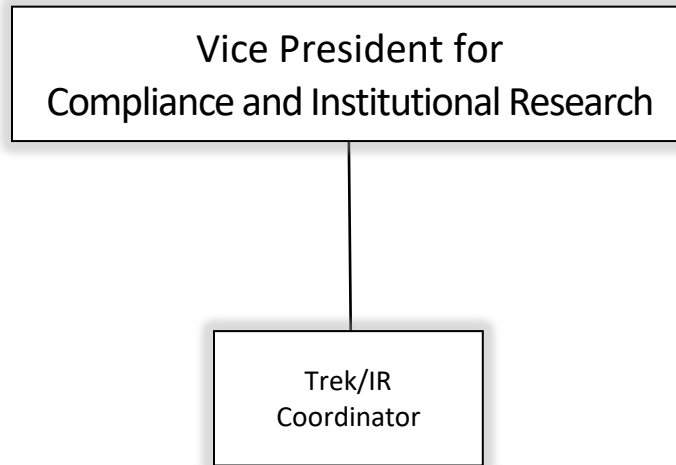
Financial Services

Revised 7/1/19



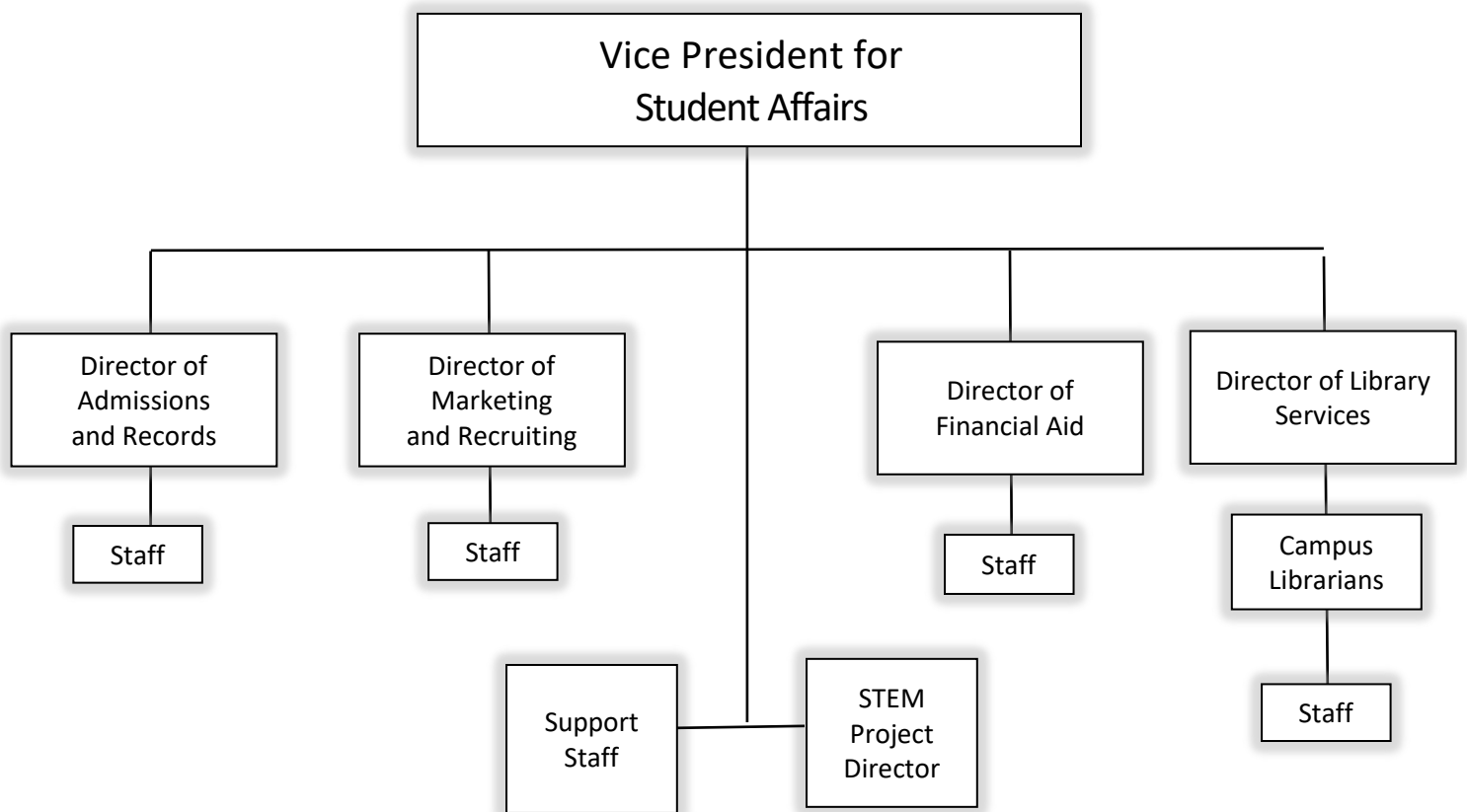
Institutional Research

Revised 8/15/22



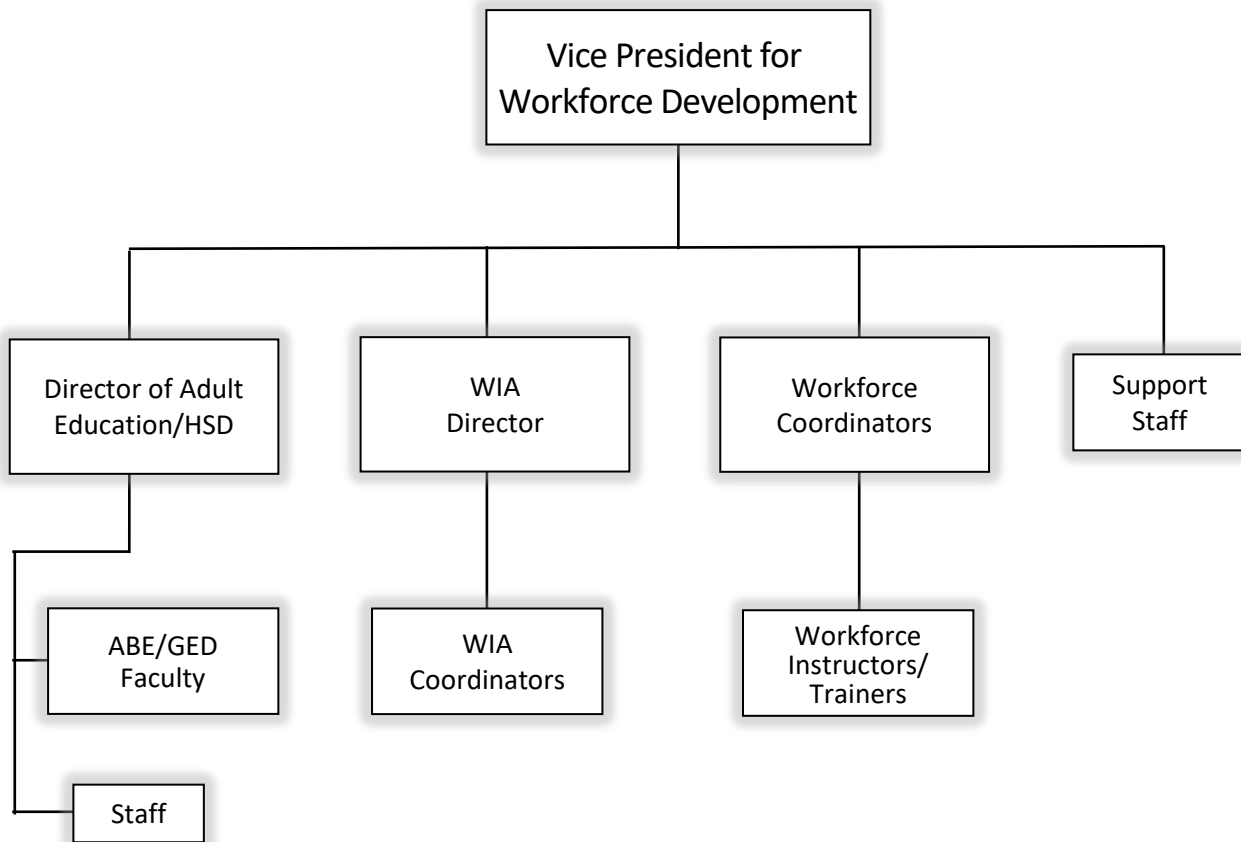
Student Affairs

Revised 8/15/22



Workforce Development

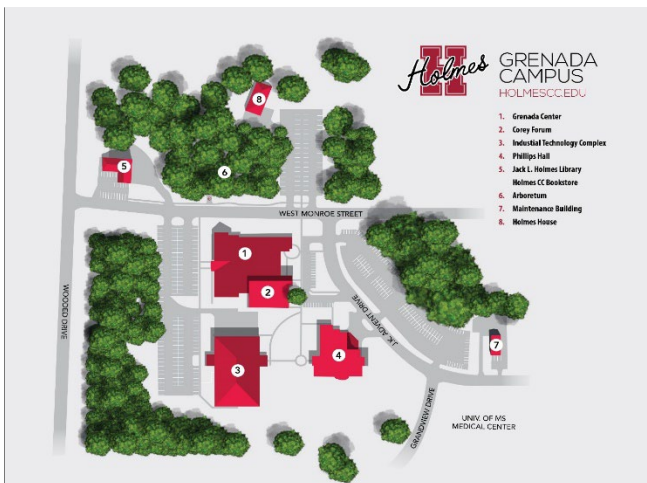
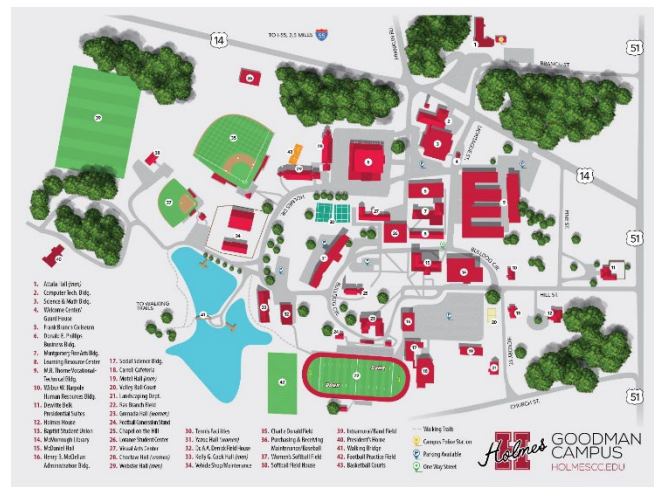
Revised 6/30/18



Holmes Campus Maps



McDaniel Hall, Goodman Campus



Core Forum, Grenada Campus



Ridgeland Hall, Ridgeland Campus





Evaluation and Contact Information

Comments and suggestions of this Factbook are welcomed to assist the Office of Institutional Effectiveness and Research in improving future issues of the Holmes Community College Factbook.

Please mail/email to the address below and include the following information:

- Your name and division, department and/or affiliation with Holmes Community College;
- List/describe any information that may be added to the next Factbook;
- Comment on any information contained in this Factbook that may need clarification or deletion (with page reference(s) included);
- Additional comments or suggestions.

Dr. Teresa Mackey
Vice President for Compliance and Institutional Research
P.O. Box 369
Goodman, MS 39079
tmackey@holmescc.edu
(662) 472-9101